

Double Leaf Multipurpose Gate

Optional Audited Additional Functions

- Sound Insulation	up to $R_{w,P}$ 54 dB	tested acc. to EN ISO 10140-2
- Burglar Protection	RC2/RC3/RC4/RC5	tested acc. to EN 1627
- Bullet Resistance	FB4-NS	tested acc. to EN 1522
- Air Tight	up to class 4	tested acc. to EN 1026
- Rain- and Fire-Water Tight	class 6A	tested acc. to EN 1027
- Wind load Resistance	class 4	tested acc. to EN 1221
- Blast Resistance	up to 8 kPa	tested acc. to EN 13124-1
- Explosion Protection	up to zone 1/21	acc. to EN 1127-1 or ATEX 2014/34/EU
- Stainless Steel		

Range of Dimension

Width from 3000 mm to 5000 mm
Height from 3000 mm to 5000 mm

Technical Specification and Tender Text

Product:	PL 2 XXL double leaf multipurpose gate brand Buchele
Door Type:	PLANE Line PL 2 XXL BASIC
Structural Opening: x mm
Door Leaf:	Double-walled, planar 84 mm thick steel door leaf without hinge embossing, three sides rebated with thick rebate. Without bottom stop. Special insulating inserts fully laid-in and glued. Securing pin screwed in door leaf rebate. Passive leaf with multi-chamber sealing profile in the middle rebate.
Threshold:	Floor bracket as separation sill. Surface galvanized and welded to the frame.
Frame:	3-sided circumferential rebated corner frame with visible black coated intumescent material in rebate. High-quality multi chamber sealing profile adjustable fixed in the three-sided groove.
Hinges:	Three-part, height adjustable construction hinges with hinge pin retention and ball bearing spacer ring for smooth door movement.
Fitting:	Active leaf with mortise lock with latch lever function acc. to EN 12209 (prepared for installation of a profile cylinder lock, provided by customer). Door handle set in acc. to EN 1906 fixed pivoted synthetic material black in U-shape with rounded short-plate. Passive leaf with surface-mounted 2-point locking system operated by an espagnolette bolt with loop handle.
Surface:	Door leaf and frame galvanized und primed with 2K-PUR primer (Very High Solid) similar RAL 7035

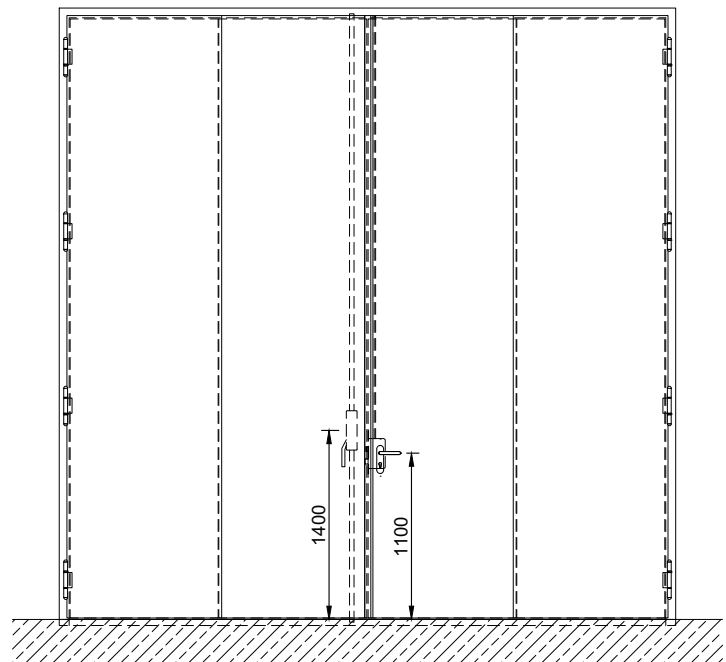
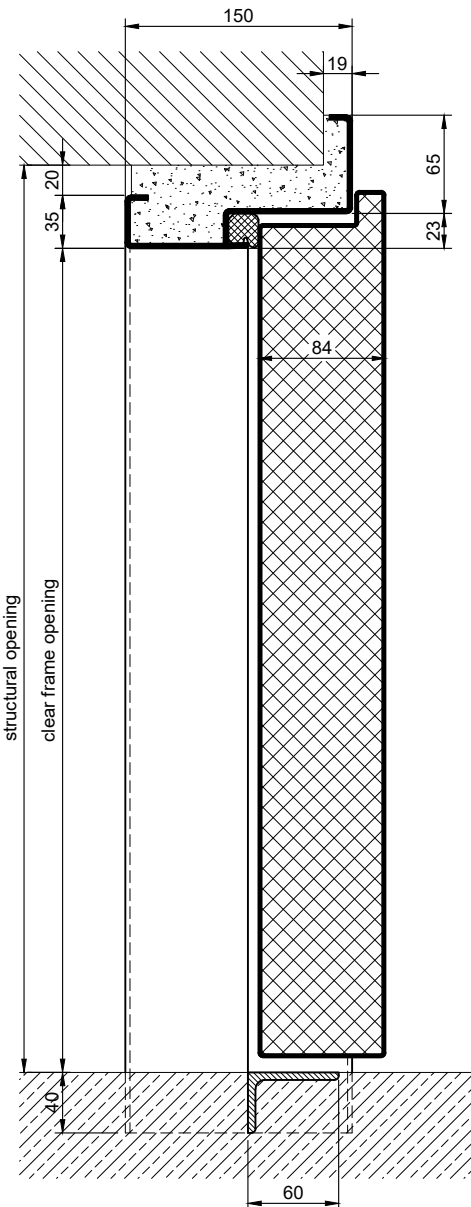
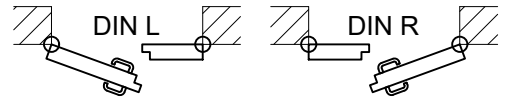
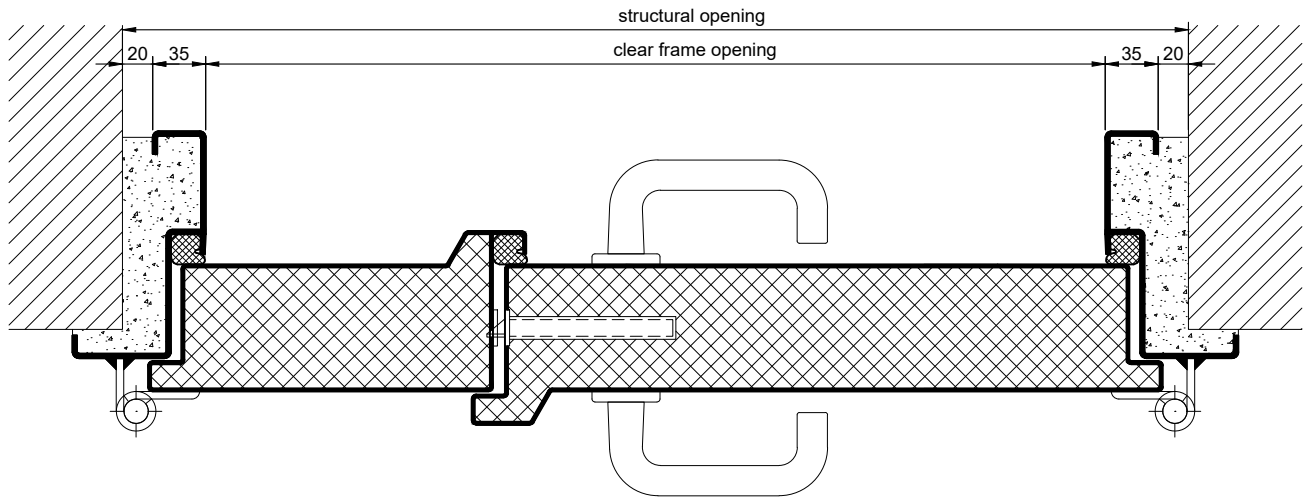
Alternative: PLANE Line PL 2 PREMIUM with flush mounted optics

- Frame:** 3-sided circumferential rebated PLANE Line special corner frame for flush mounted optics on hinge side.
With visible, black coated intumescent material in rebate.
High-quality multi-chamber sealing profile adjustable fixed in the three-sided groove.
- Hinges:** Three-part, height adjustable construction hinges with hinge pin retention and ball bearing spacer ring for smooth door movement.

Supplementary Equipment

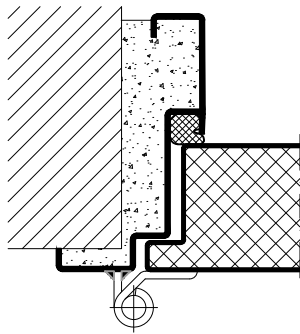
- Glazing:** Single or insulating glazing fixed with profiled and visible screwed steel glazing bars.
Minimum border 125 mm on side and top, base 300 mm.
- Ventilation Grille:** Burglar resistant and poke-proof ventilation grill, fully backed with bird protection grille 10x10 mm inside.
- Stainless Steel:** Material 1.4301 (V2A) or 1.4404 (V4A),
Surface mill finish or brushed.
- BUCHELE DELUXE:** The exclusive surface coating.

BASIC Version

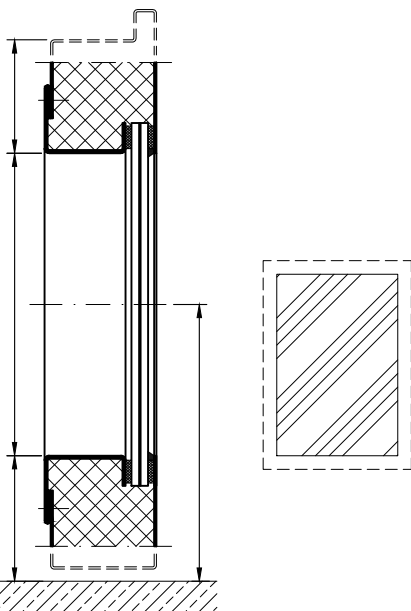
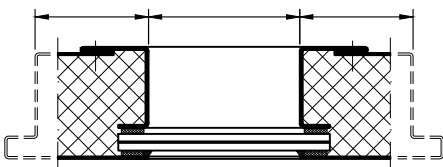


PREMIUM Version

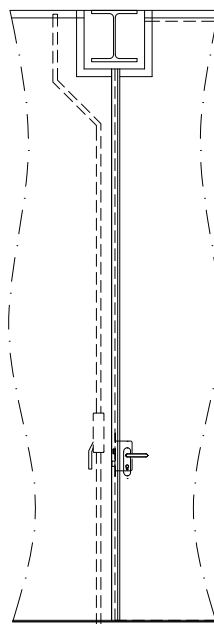
construction hinges



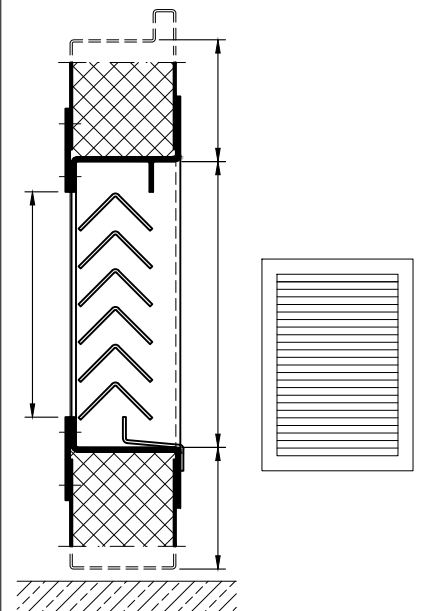
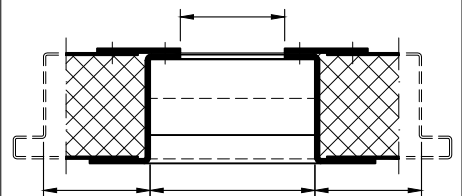
glazing



Kranbahnausschnitt

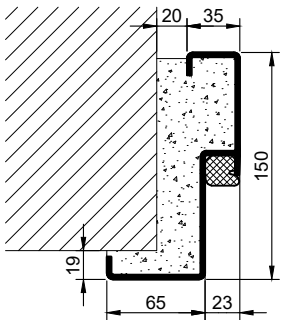
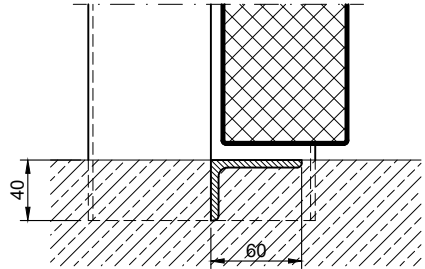
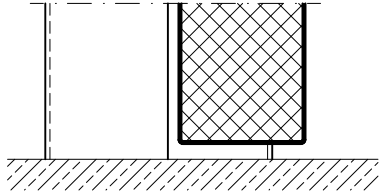
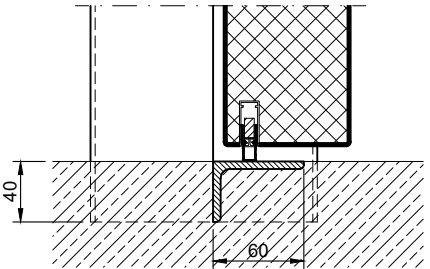
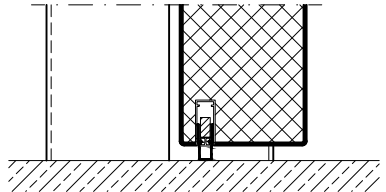
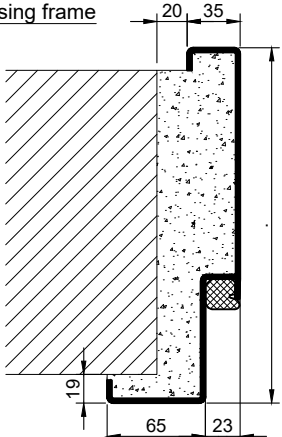
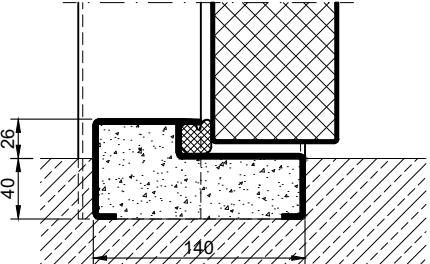
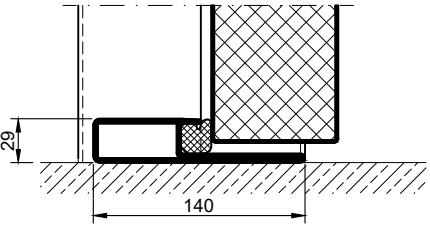
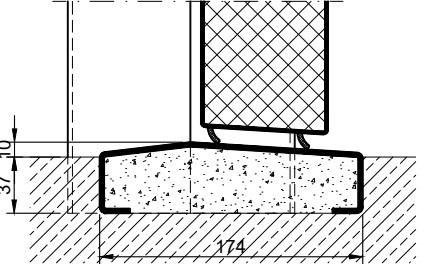
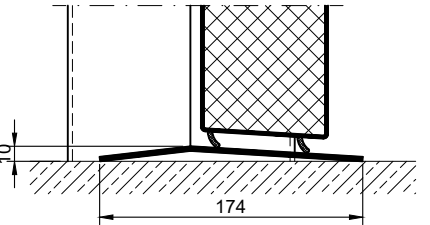
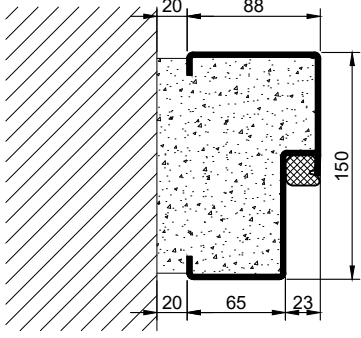
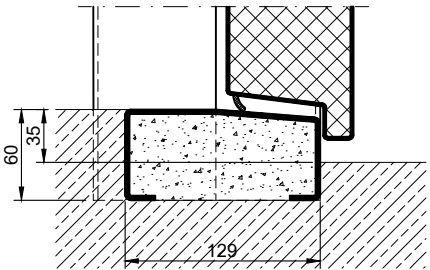
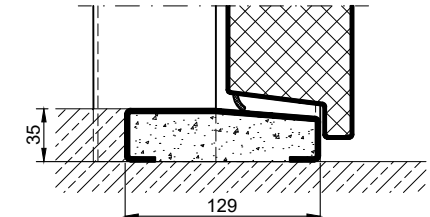
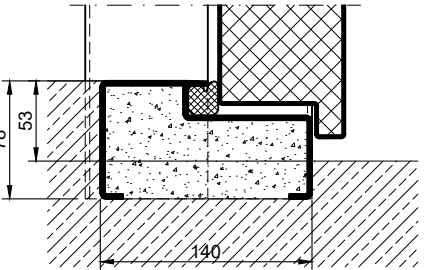
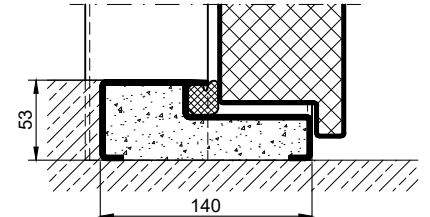
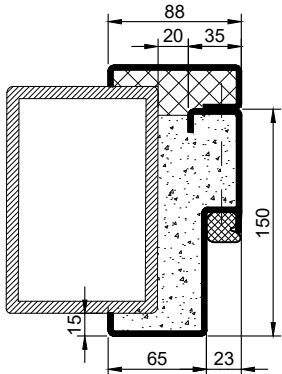


ventilation grille



10.10.2_PLANE LINE PL 2 XXL_EN

technical modifications reserved - edition 07/2024

Frames	Thresholds	
<p>corner frame</p> 	<p>separation sill</p>  	<p>drop seal</p>  
<p>encasing frame</p> 	<p>stop sill with seal</p>  	<p>hump sill</p>  
<p>block frame</p> 	<p>half sill</p>  	<p>full sill</p>  
<p>Eck- mit Gegenzarge</p> 		

10.10.2. PLANE LINE PL 2 XXL_EN