

## Double Leaf PLANE Line Multipurpose Door

### Optional Audited Additional Functions

- Sound Insulation	<b>up to R<sub>w,P</sub> 54dB</b>	tested acc. to EN ISO 10140-2
- Burglar Protection	<b>RC2/RC3/RC4/RC5</b>	tested acc. to EN 1627
- Bullet Resistance	<b>FB4/FB6-NS</b>	tested acc. to EN 1522
- Air Tight	<b>up to class 4</b>	tested acc. to EN 1026
- Rain- and Fire-Water Tight	<b>class 6A</b>	tested acc. to EN 1027
- Wind Load Resistance	<b>up to class C5</b>	tested acc. to EN 12211
- Blast Resistance	<b>up to 20 kPa</b>	tested acc. to EN 13124-1
- Explosion Protection	<b>up to zone 1/21</b>	acc. to EN 1127-1 or ATEX 2014/34/EU
- Stainless Steel		

### Range of Dimension

**Width** from 1000 mm to 3000 mm  
**Height** from 500 mm to 3000 mm

### Technical Specification and Tender Text

<b>Product:</b>	<b>PL 2 double leaf multipurpose door brand Buchele</b>
<b>Door Type:</b>	<b>PLANE Line PL 2 BASIC</b>
<b>Air Tight Class:</b>	<b>2</b>
<b>Structural Opening:</b>	<b>.... x .... mm</b>
<b>Door Leaf:</b>	Double-walled, planar 70 mm thick steel door without hinge embossing, three sides rebated with thick rebate Without bottom stop and drop sealing system. Special insulating inserts fully laid-in and glued. Passive leaf with multi-chamber sealing profile in the middle rebate.
<b>Threshold:</b>	Floor bracket as separation sill. Surface galvanized and welded to the frame.
<b>Frame:</b>	3-sided circumferential rebated corner frame. High-quality multi chamber sealing profile adjustable fixed in the three-sided groove.
<b>Hinges:</b>	Three-part, height adjustable construction hinges with hinge pin retention and ball bearing spacer ring for smooth door movement.
<b>Fitting:</b>	<b>Active leaf:</b> mortise lock with latch lever function acc. to EN 12209 (prepared for installation of a profile cylinder lock, provided by customer). Door handle set in acc. to EN 1906 fixed pivoted synthetic material black in U-shape with rounded short-plate. <b>Passive leaf</b> with concealed shoot bolt lock.
<b>Surface:</b>	Door leaf and frame galvanized und primed with 2K-PUR primer (Very High Solid) similar RAL 7035.

**Alternative: PLANE Line PL 1 PREMIUM with flush mounted optics**

- Frame:** 3-sided circumferential rebated PLANE Line special corner frame for flush mounted optics on hinge side.  
High-quality multi-chamber sealing profile adjustable fixed in the three-sided groove.
- Hinges:** Object hinges type VB-3D 160 adjustable in three dimensions.  
Fixture element with slide bearings inside for smooth door movement.

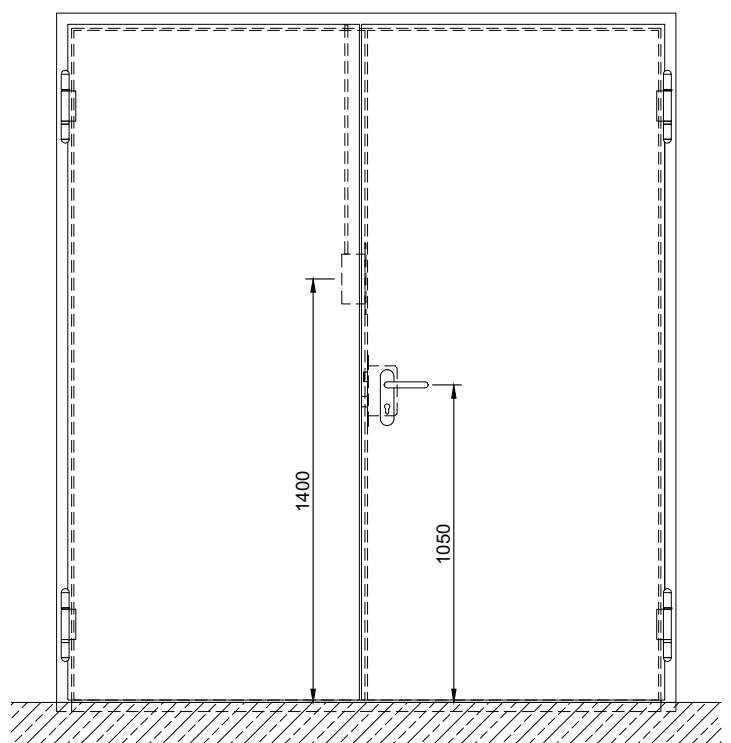
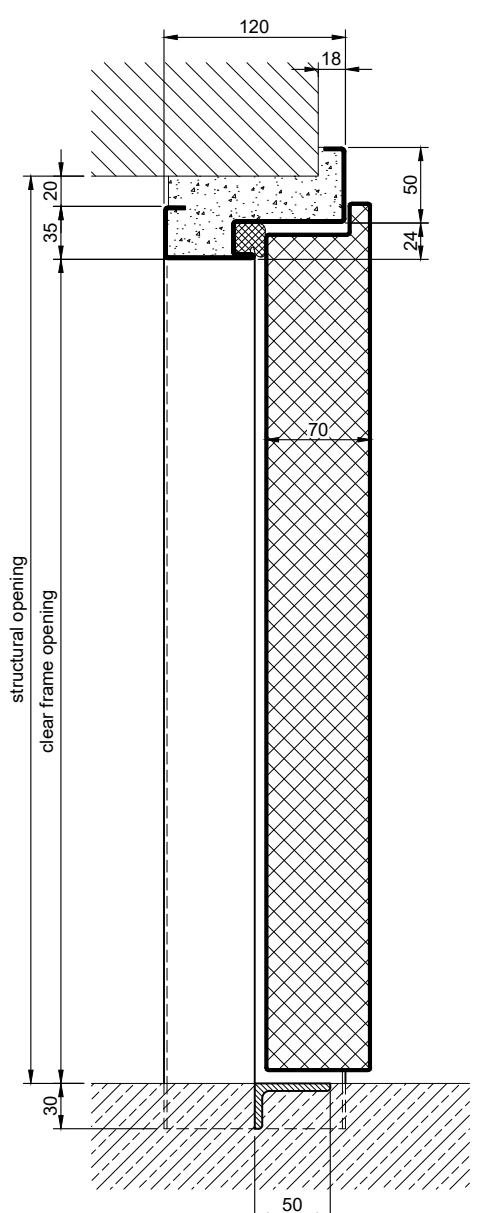
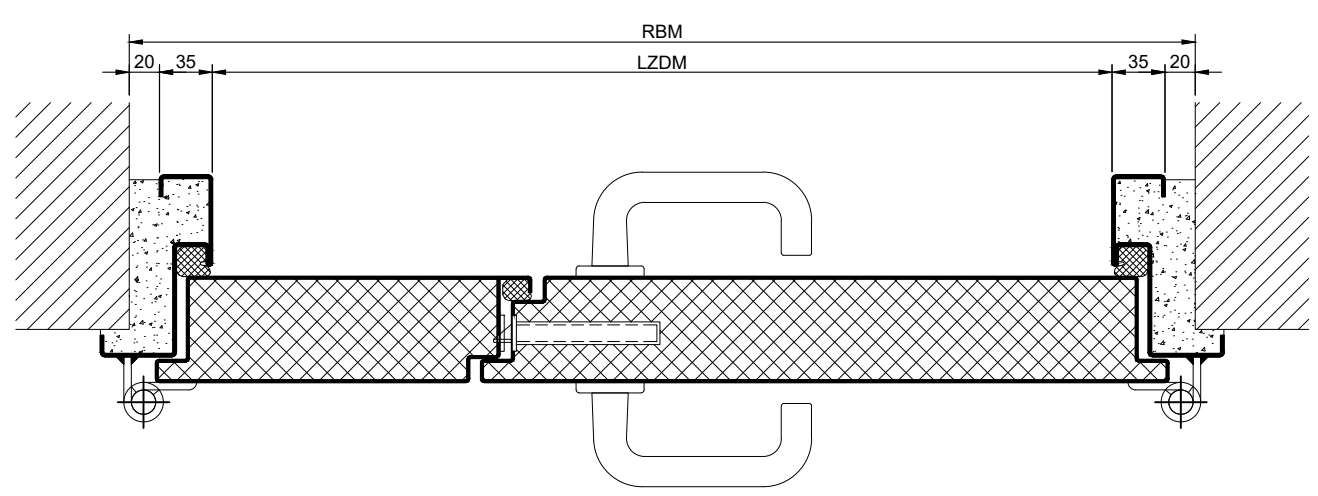
**Alternative: PLANE Line PL 1 SUPERIOR with flush mounted optics**

- Frame:** 3-sided circumferential rebated PLANE Line special corner frame for flush mounted optics on hinge side.  
High-quality multi-chamber sealing profile adjustable fixed in the three-sided groove.
- Hinges:** Concealed hinge system adjustable in three dimensions.

**Supplementary Equipment**

- Standard Glazing:** Single glazing or insulating glazing fixed with profiled and visible screwed steel glazing bars.  
Minimum border 125 mm on side and top, base 300 mm.
- Flush Glazing:** PLANE Line special glazing flush mounted with outer edge of door leaf on hinge side and opposite hinge side.  
Edge enamelling and permanent elastic glazing joint in colour black RAL 9004.  
Minimum border 125 mm on side and top, base 300 mm.
- Ventilation Grille:** Burglar resistant and poke-proof ventilation grill, fully backed with bird protection grille 10x10 mm inside.
- Stainless Steel:** Material 1.4301 (V2A) or 1.4404 (V4A),  
Surface mill finish or brushed.
- BUCHELE DELUXE:** The exclusive surface coating.

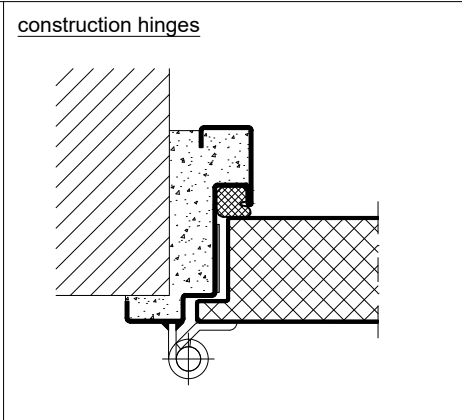
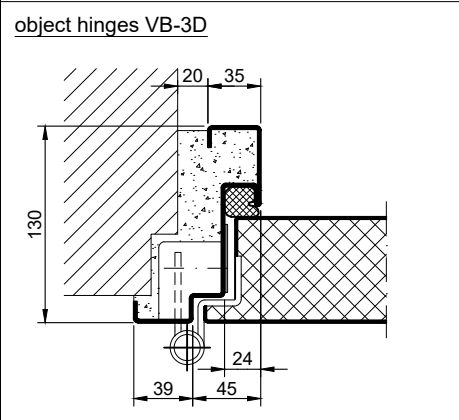
### BASIC Version



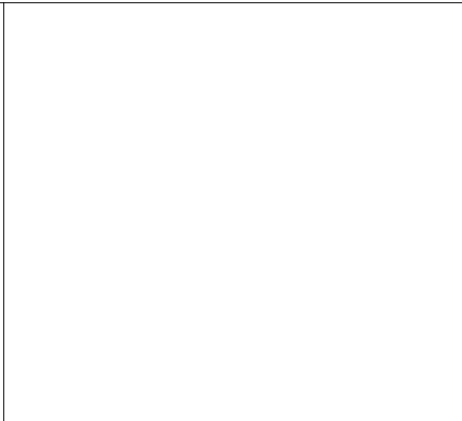
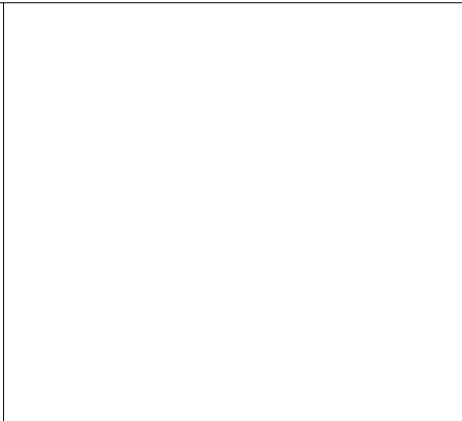
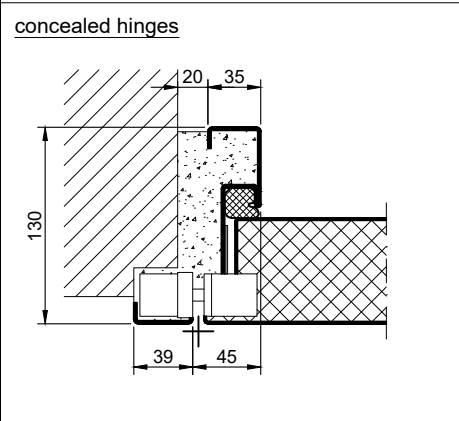
10.10.1\_PLANE LINE PL 2\_EN

technical modifications reserved - edition 07/2024

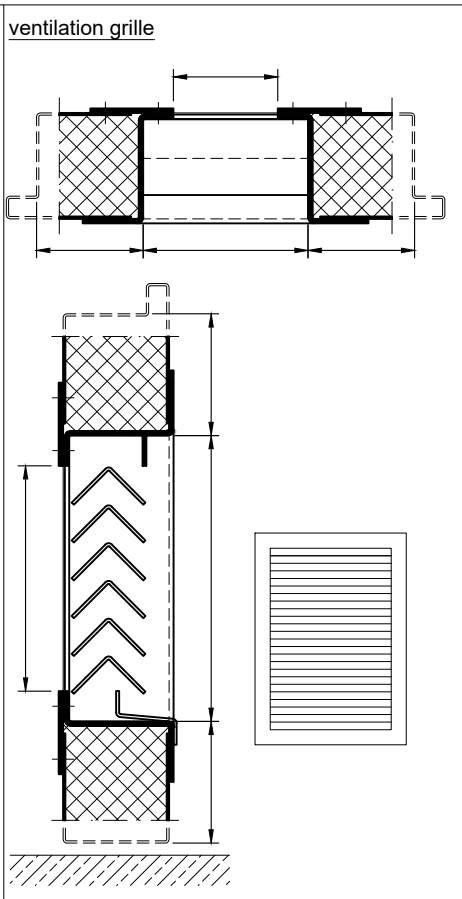
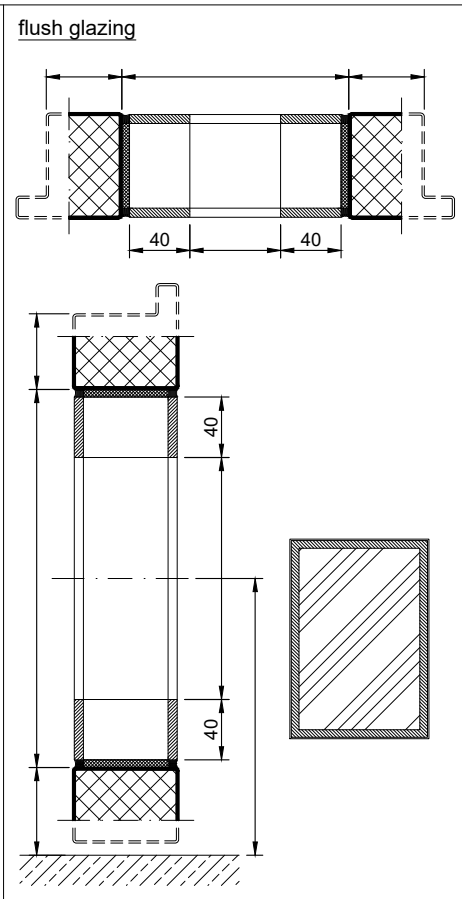
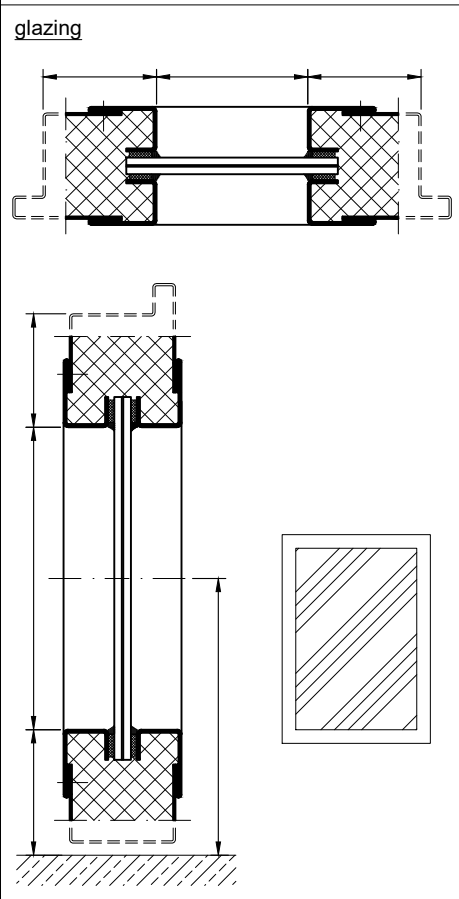
### PREMIUM Version



### SUPERIOR Version

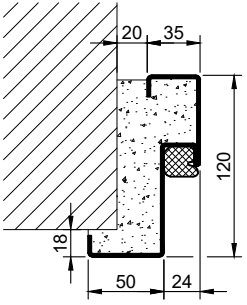
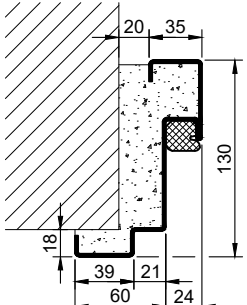
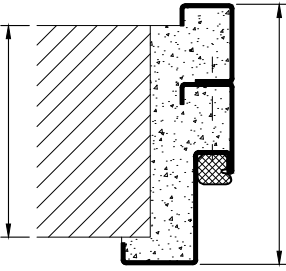
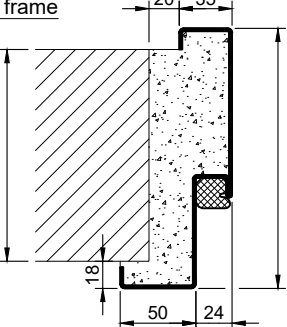
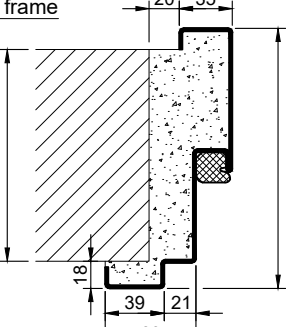
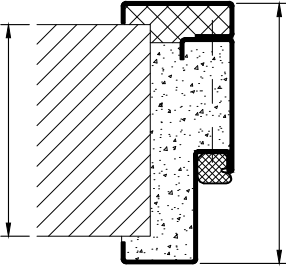
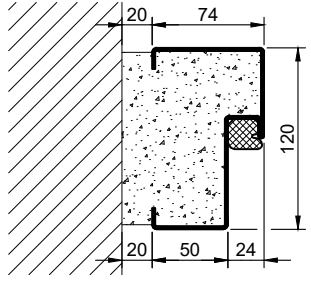

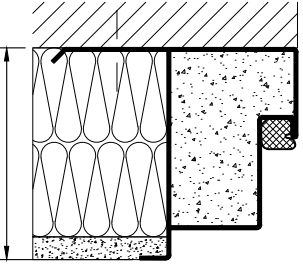
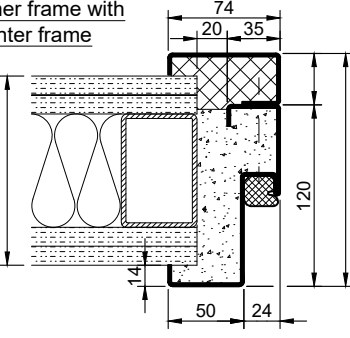
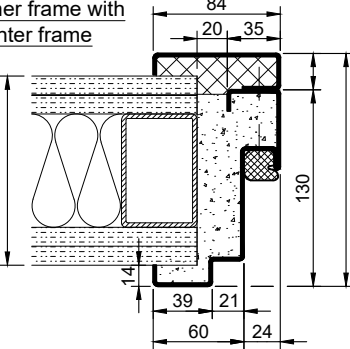
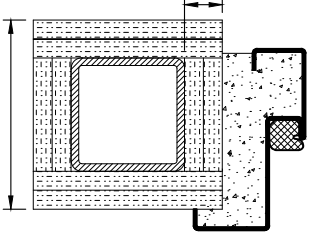
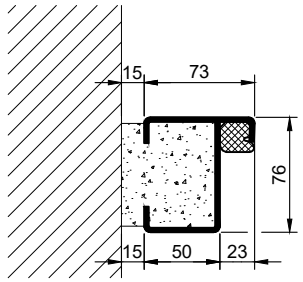
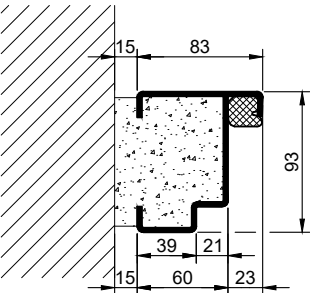
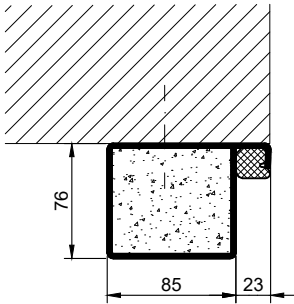


### Options



10.10.1. PLANE LINE PL 2\_EN

technical modifications reserved - edition 07/2024

Frames BASIC	Frames PREMIUM / SUPERIOR	Variants (illustration BASIC)
<p>corner frame</p> 	<p>corner frame</p> 	<p>corner frame with additional frame</p> 
<p>encasing frame</p> 	<p>encasing frame</p> 	<p>encasing frame with counter frame</p> 
<p>block frame</p> 	<p>block frame</p> 	<p>juted block frame</p> 
<p>corner frame with counter frame</p> 	<p>corner frame with counter frame</p> 	<p>corner frame at support / pillar</p> 
<p>profile block frame</p> 	<p>profile block frame</p> 	<p>pre-wall frame</p> 

10.10.1\_PLANE LINE PL 2\_EN

technical modifications reserved - edition 07/2024

### Thresholds

<p><u>separation sill</u></p>	<p><u>drop seal</u></p>	<p><u>stop sill with seal</u></p>
<p><u>stop sill with seal</u></p>	<p><u>stop sill without seal</u></p>	<p><u>stop sill with drop seal</u></p>
		<p><u>full sill</u></p>

10.10.1\_PLANE LINE PL 2\_EN