

Single Leaf PLANE Line Multipurpose Door

Optional Audited Additional Functions

- Sound Insulation	up to $R_{w,P}$ 54 dB	tested acc. to EN ISO 10140-2
- Burglar Protection	RC2/RC3/RC4/RC5	tested acc. to EN 1627
- Bullet Resistance	FB4/FB6-NS	tested acc. to EN 1522
- Air Tight	up to class 4	tested acc. to EN 1026
- Rain- and Fire-Water Tight	class 6A	tested acc. to EN 1027
- Wind load Resistance	class C5	tested acc. to EN 1221
- Blast Resistance	up to 20 kPa	tested acc. to EN 13124-1
- Explosion Protection	up to zone 1/21	acc. to EN 1127-1 or ATEX 2014/34/EU
- Stainless Steel		

Range of Dimension

Width from 500 mm to 1500 mm
Height from 500 mm to 3000 mm

Technical Specification and Tender Text

Product:	PL 1 single leaf multipurpose door brand Buchele
Door Type:	PLANE Line PL 1 BASIC
Structural Opening: x mm
Door Leaf:	Double-walled, planar 70 mm thick steel door leaf without hinge embossing, three sides rebated with thick rebate. Without bottom stop. Special insulating inserts fully laid-in and glued.
Threshold:	Floor bracket as separation sill. Surface galvanized and welded to the frame.
Frame:	3-sided circumferential rebated corner frame with visible black coated intumescent material in rebate. High-quality multi chamber sealing profile adjustable fixed in the three-sided groove.
Hinges:	Three-part, height adjustable construction hinges with hinge pin retention and ball bearing spacer ring for smooth door movement.
Fitting:	Mortise lock with latch lever function acc. to EN 12209 (prepared for installation of a profile cylinder lock, provided by customer). Door handle set in acc. to EN 1906 fixed pivoted synthetic material black in U-shape with rounded short-plate.
Surface:	Door leaf and frame galvanized und primed with 2K-PUR primer (Very High Solid) similar RAL 7035.

Alternative: PLANE Line PL 1 PREMIUM with flush mounted optics

- Frame:** 3-sided circumferential rebated PLANE Line special corner frame for flush mounted optics on hinge side.
With visible, black coated intumescent material in rebate.
High-quality multi-chamber sealing profile adjustable fixed in the three-sided groove.
- Hinges:** Object hinges type VB-3D 160 adjustable in three dimensions.
Fixture element with slide bearings inside for smooth door movement.

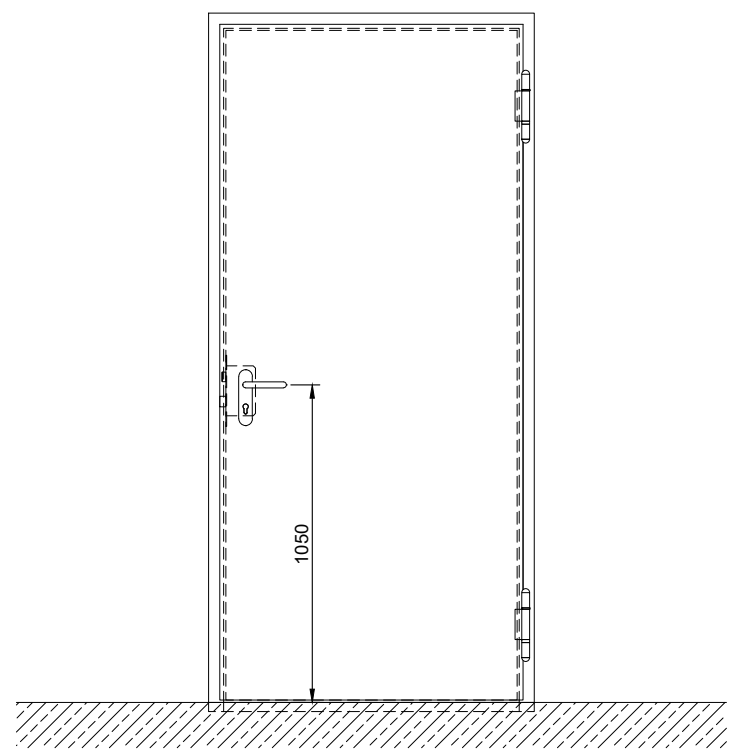
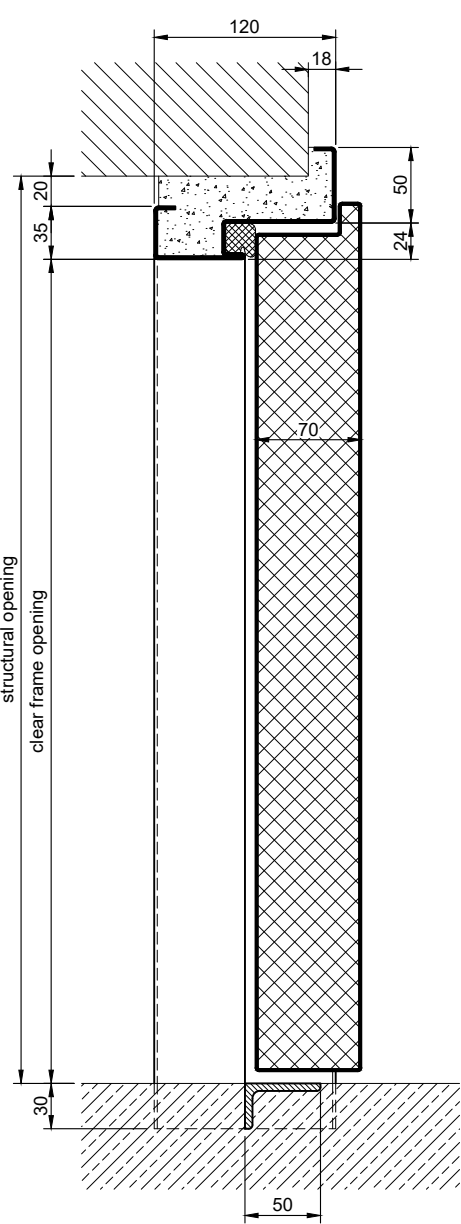
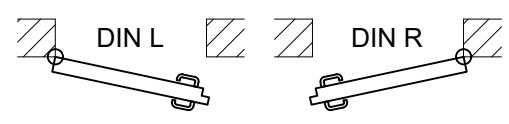
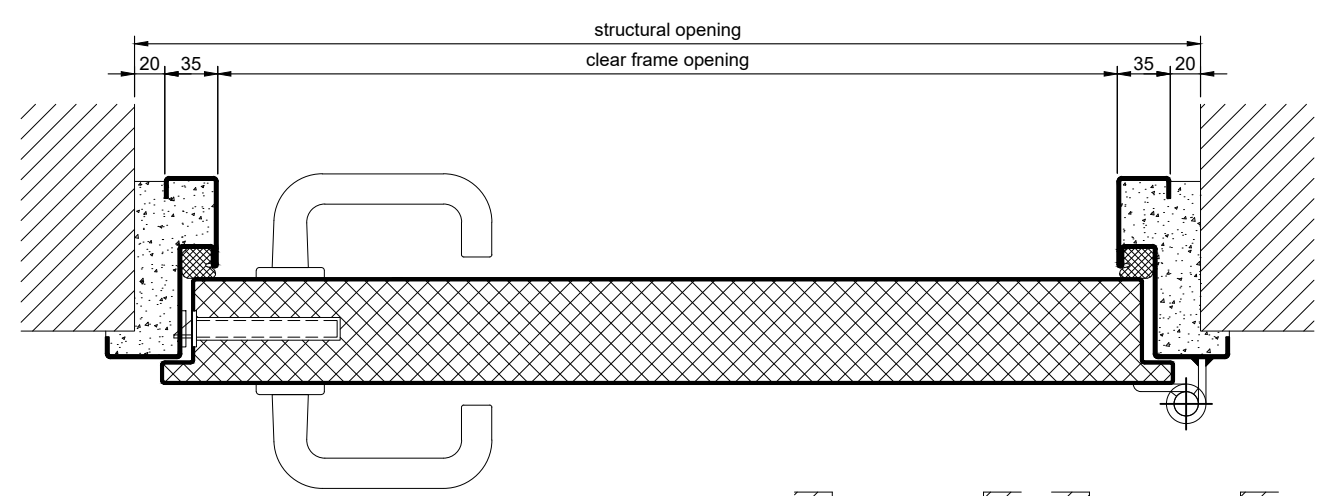
Alternative: PLANE Line PL 301 SUPERIOR with flush mounted optics

- Frame:** 3-sided circumferential rebated PLANE Line special corner frame for flush mounted optics on hinge side.
With visible, black coated intumescent material in rebate.
High-quality multi-chamber sealing profile adjustable fixed in the three-sided groove.
- Hinges:** Concealed hinge system adjustable in three dimensions.

Supplementary Equipment

- Standard Glazing:** Single or insulating glazing fixed with profiled and visible screwed steel glazing bars.
Minimum border 125 mm on side and top, base 300 mm.
- Flush Glazing:** PLANE Line special glazing flush mounted with outer edge of door leaf on hinge side and opposite hinge side.
Edge enamelling and permanent elastic glazing joint in colour black RAL 9004.
Minimum border 125 mm on side and top, base 300 mm.
- Ventilation Grille:** Burglar resistant and poke-proof ventilation grill, fully backed with bird protection grille 10x10 mm inside.
- Stainless Steel:** Material 1.4301 (V2A) or 1.4404 (V4A),
Surface mill finish or brushed.
- BUCHELE DELUXE:** The exclusive surface coating.

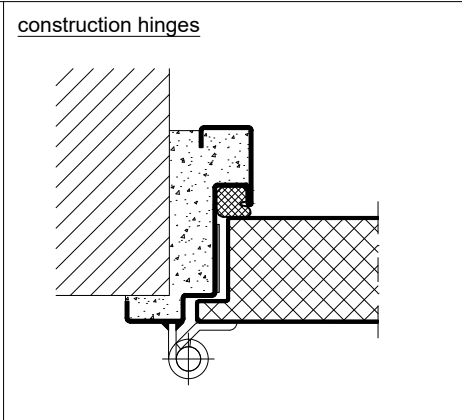
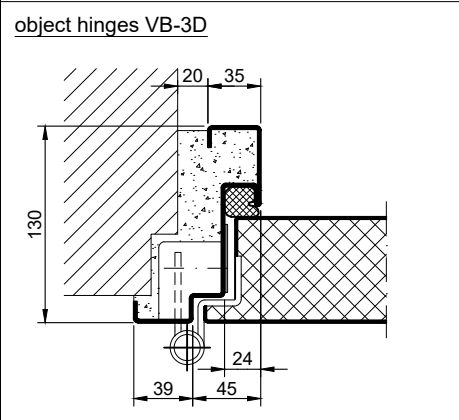
BASIC Version



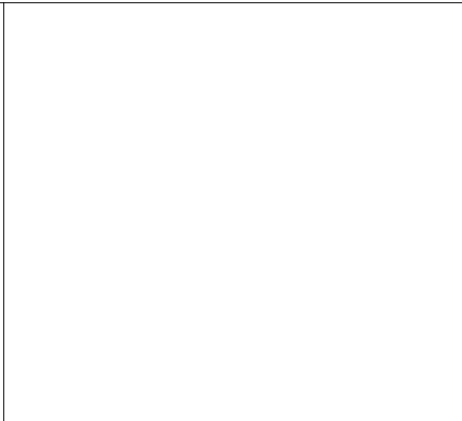
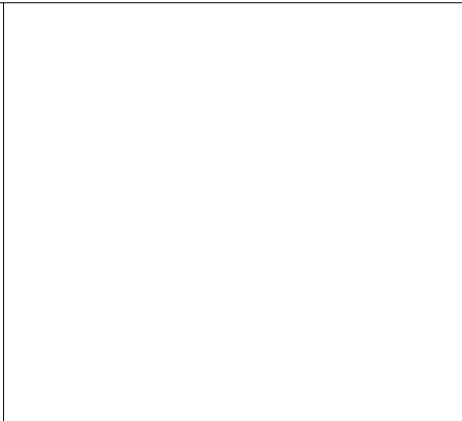
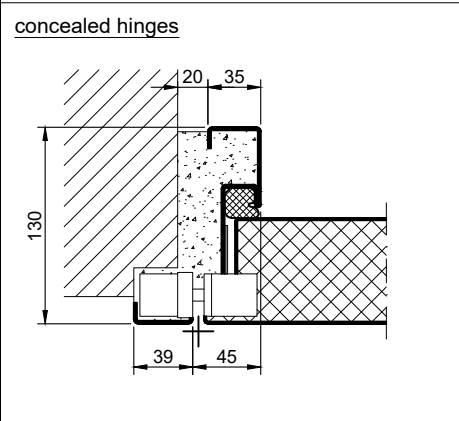
10.0.1_PL.1_EN

technical modifications reserved - edition 07/2024

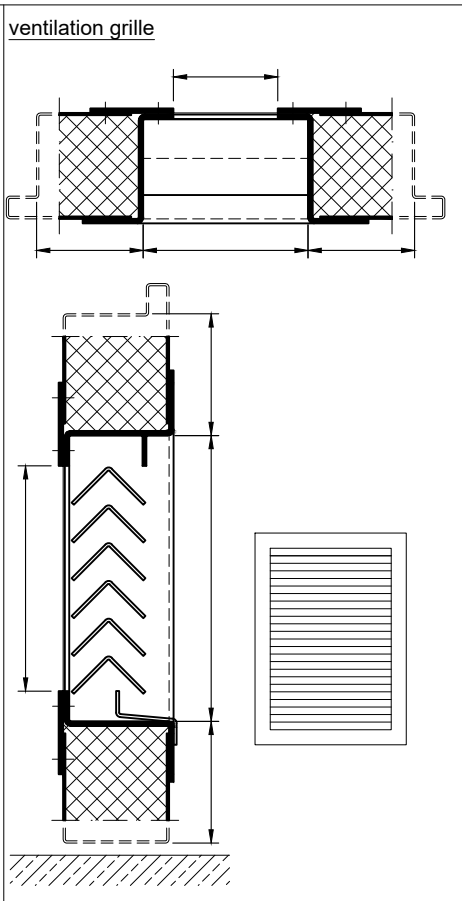
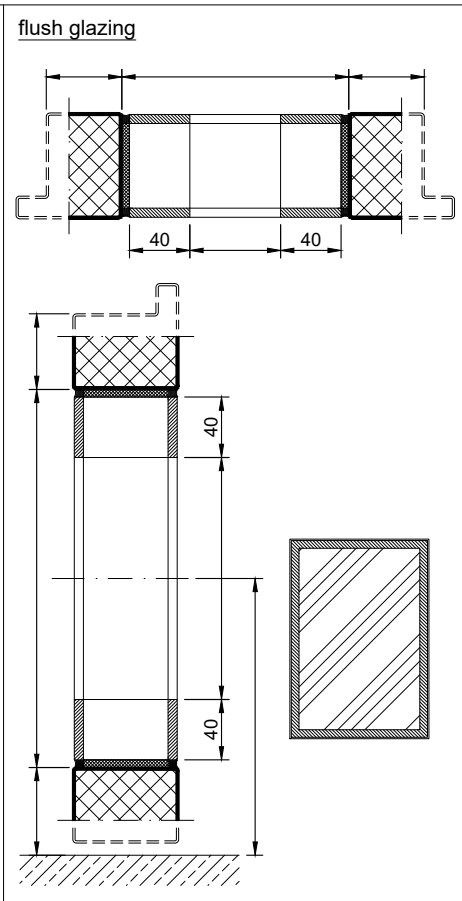
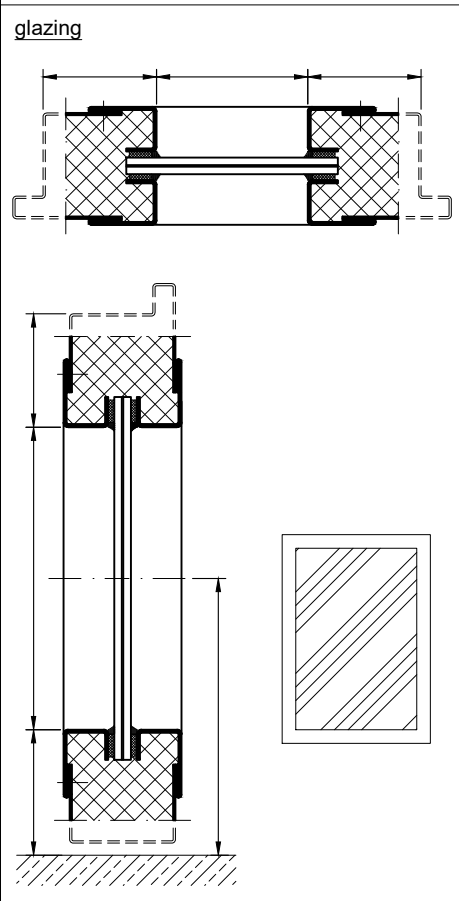
PREMIUM Version



SUPERIOR Version

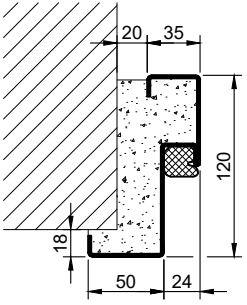
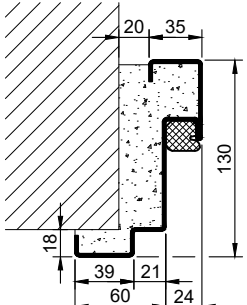
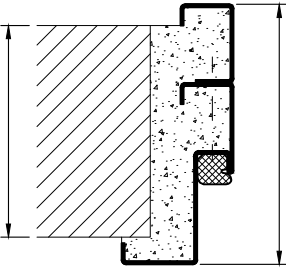
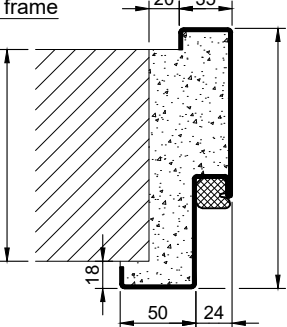
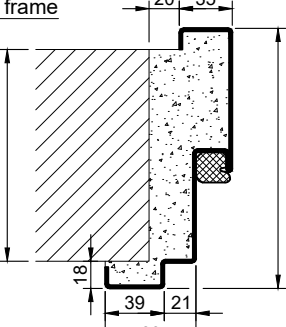
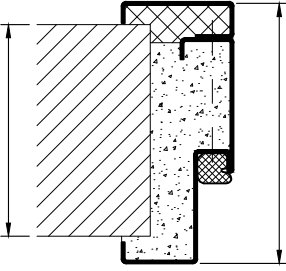
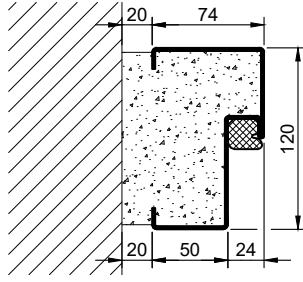

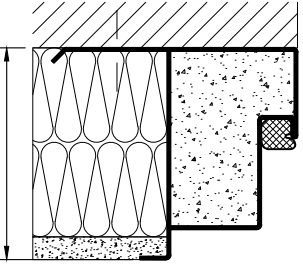
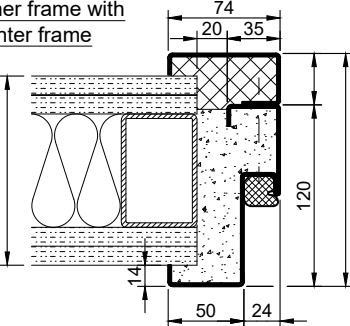
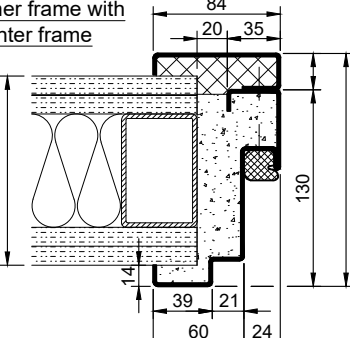
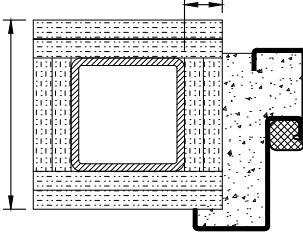
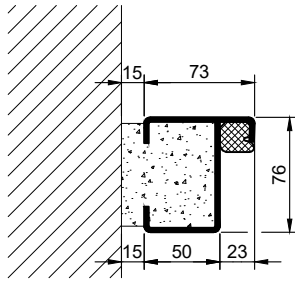
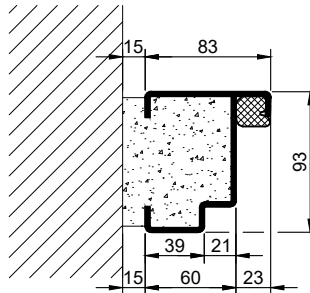
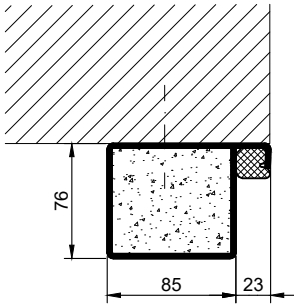


Options



10.0.1_PL.1_EN

technical modifications reserved - edition 07/2024

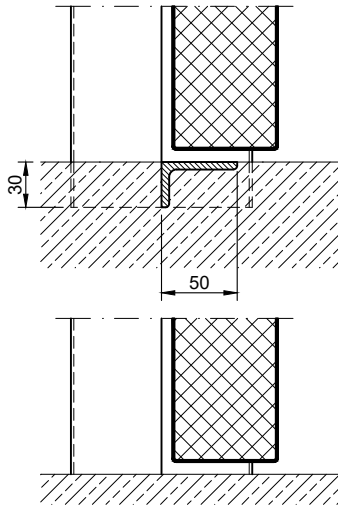
Frames BASIC	Frames PREMIUM / SUPERIOR	Variants (illustration BASIC)
<p>corner frame</p> 	<p>corner frame</p> 	<p>corner frame with additional frame</p> 
<p>encasing frame</p> 	<p>encasing frame</p> 	<p>encasing frame with counter frame</p> 
<p>block frame</p> 	<p>block frame</p> 	<p>juted block frame</p> 
<p>corner frame with counter frame</p> 	<p>corner frame with counter frame</p> 	<p>corner frame at support / pillar</p> 
<p>profile block frame</p> 	<p>profile block frame</p> 	<p>pre-wall frame</p> 

10.0.1_PL.1_EN

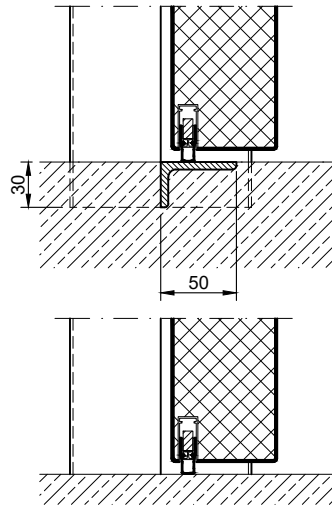
technical modifications reserved - edition 07/2024

Thresholds

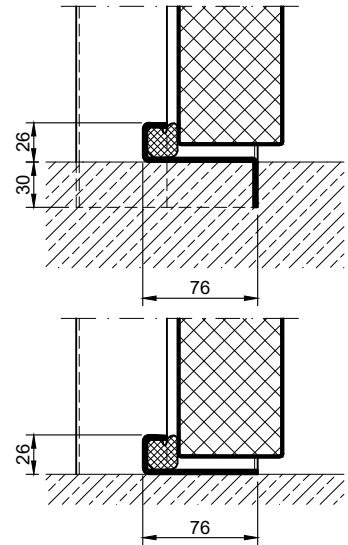
separation sill



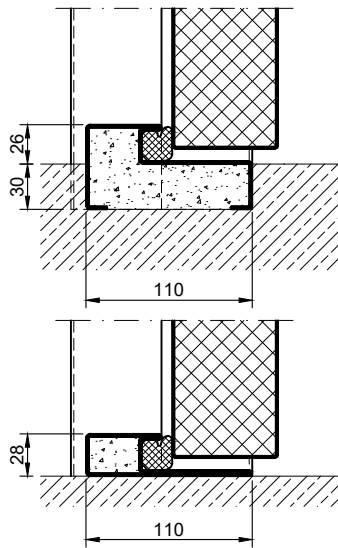
drop seal



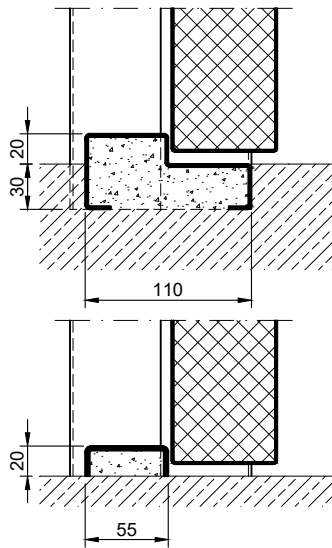
stop sill with seal



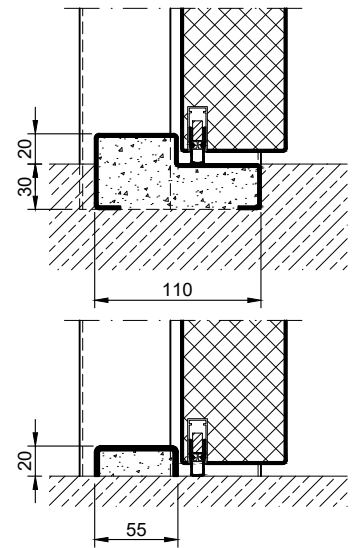
stop sill with seal



stop sill without seal



stop sill with drop seal



full sill

