

## Double Leaf PLANE Line Transformer Station Door

acc. to DIN EN 62271-202 (VDE 0671-202) or DIN EN 61936-1 (VDE 0101-1)

### Optional Audited Additional Functions

- Burglar Protection	RC2/RC3/RC4/RC5	tested acc. to EN 1627
- Blast Resistance	up to 20 kPa	tested acc. to EN 13124-1
- Explosion Protection	up to zone 1/21	acc. to EN 1127-1 or ATEX 2014/34/EU
- Protection Class	IP23D / IP44	tested acc. to DIN EN 60529
- Stainless Steel		

### Range of Dimension

Width from 1000 mm to 3000 mm  
Height from 500 mm to 3000 mm

### Technical Specification and Tender Text

<b>Product:</b>	PL 2 double leaf transformer station door brand Buchele acc. to DIN EN 62271-202 (VDE 0671-202)
<b>Door Type:</b>	PLANE Line PL 2 (Trafo) BASIC
<b>Structural Opening:</b>	.... x .... mm
<b>Door Leaf:</b>	Double-walled, planar 70 mm thick steel door without hinge embossing, three sides rebated with thick rebate. Without bottom stop. Non-flammable special insulating inserts fully laid-in and glued. Passive leaf with multi-chamber sealing profile in the middle rebate.
<b>Ventilation Grille:</b>	Poke-proof slanted double slats made out of steel, fully backed with bird protection grille 10x10 mm. Size dependent on specification for free ventilation cross-section.
<b>Threshold:</b>	Floor bracket as separation sill. Surface galvanized and welded to the frame.
<b>Frame:</b>	3-sided circumferential rebated corner frame. High-quality multi chamber sealing profile adjustable fixed in the three- sided groove.
<b>Hinges:</b>	Three-part, height adjustable construction hinges with hinge pin retention and ball bearing spacer ring for smooth door movement.
<b>Fitting:</b>	<b>Active leaf:</b> mortise lock with latch lever function acc. to EN 12209 (prepared for installation of a profile cylinder lock, provided by customer). Door handle set in acc. to EN 1906 fixed pivoted synthetic material black in U-shape with rounded short-plate. <b>Passive leaf</b> with concealed shoot-bolt lock.
<b>Grounding:</b>	Grounding connection between door leaf and frame. Separate threaded opening in the frame for connection to the customer's grounding circuit.
<b>Surface:</b>	Door leaf and frame galvanized und primed with 2K-PUR primer (Very High Solid) similar RAL 7035.

**Alternative: PLANE Line PL 2 PREMIUM with flush mounted optics**

- Frame:** 3-sided circumferential rebated PLANE Line special corner frame for flush mounted optics on hinge side.  
High-quality multi-chamber sealing profile adjustable fixed in the three-sided groove.
- Hinges:** Object hinges type VB-3D 160 adjustable in three dimensions.  
Fixture element with slide bearings inside for smooth door movement.

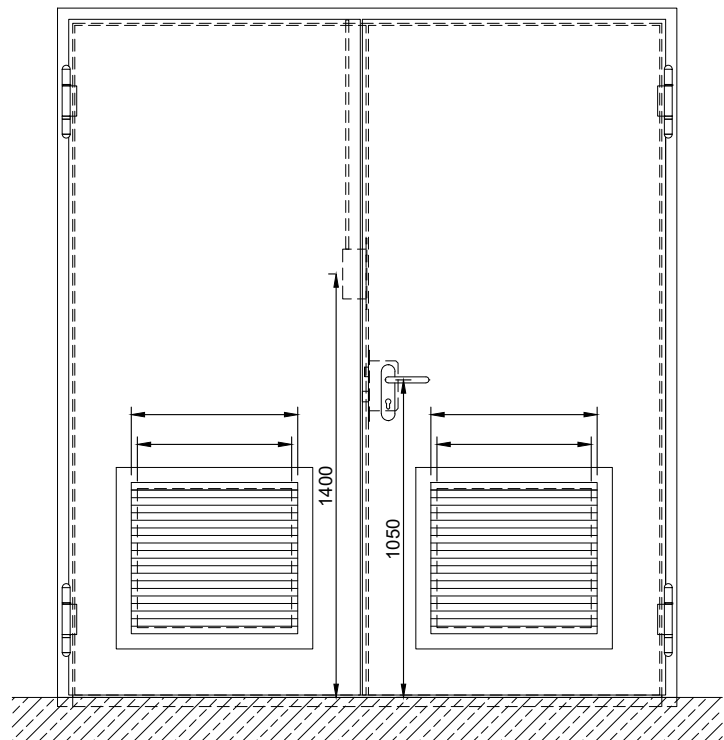
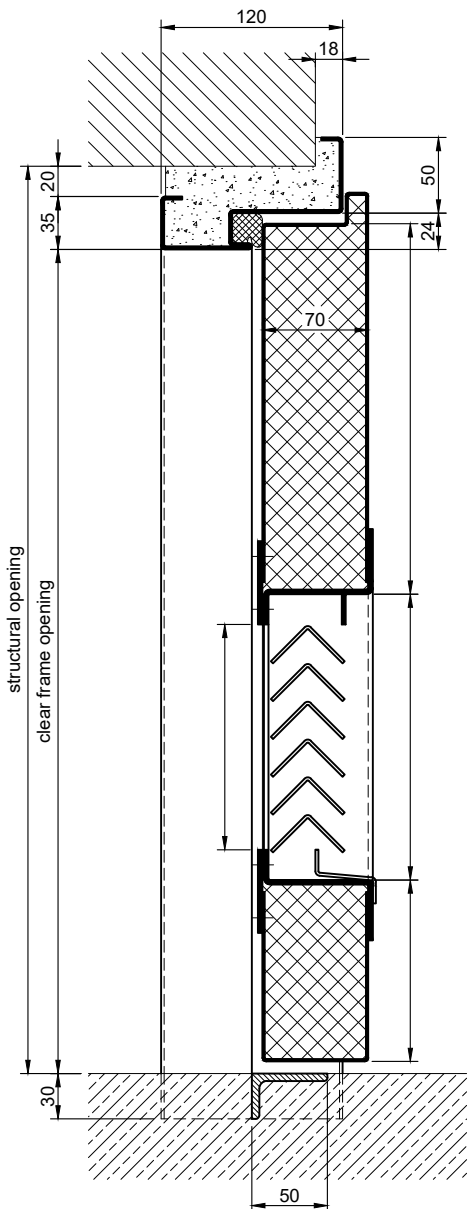
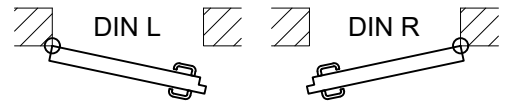
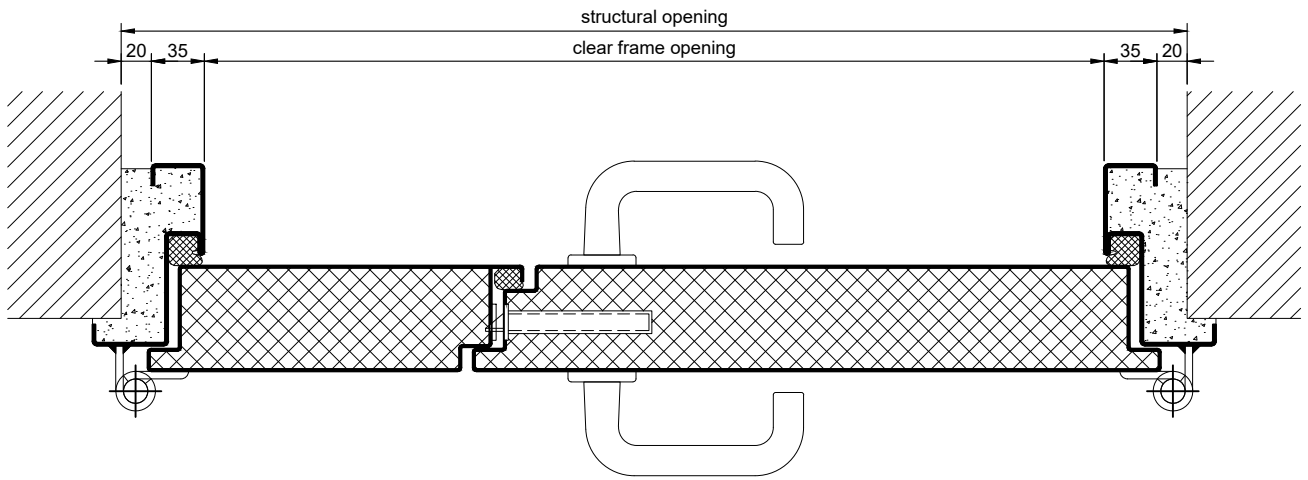
**Alternative: PLANE Line PL 2 SUPERIOR with flush mounted optics**

- Frame:** 3-sided circumferential rebated PLANE Line special corner frame for flush mounted optics on hinge side.  
High-quality multi-chamber sealing profile adjustable fixed in the three-sided groove.
- Hinges:** Concealed hinge system adjustable in three dimensions.

**Supplementary Equipment**

- Standard Glazing:** Single glazing or insulating glazing fixed with profiled and visible screwed steel glazing bars.  
Minimum border 125 mm on side and top, base 300 mm.
- Flush Glazing:** PLANE Line special glazing flush mounted with outer edge of door leaf on hinge side and opposite hinge side.  
Edge enamelling and permanent elastic glazing joint in colour black RAL 9004.  
Minimum border 125 mm on side and top, base 300 mm.
- Hold-Open Device:** Buchele hold-open device mounted on the opposite hinge side on the lintel section of the frame. The door leaf is automatically fixed at 90° opening. Fixation can be released by a push rod.
- Double cylinder lock:** Lock with two profile cylinder punches acc. to DIN EN 12209 (prepared for installation of two profile cylinders, provided by customer)
- Fanlight:** Ventilation grille, fixed mounted in the frame above the door leaf with poke-proof slanted double slats made out of steel, fully backed with bird protection grille 10x10 mm.
- Stainless Steel:** Material 1.4301 (V2A) or 1.4404 (V4A),  
Surface mill finish or brushed.
- BUCHELE DELUXE:** The exclusive surface coating.

### BASIC Version

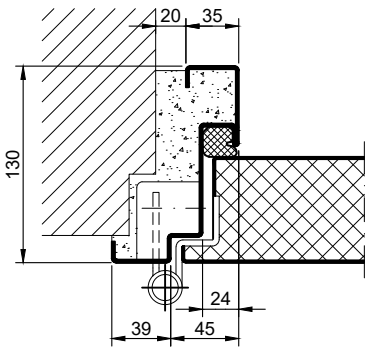


9.10.1\_PLANE LINE PL 2 TRAF0\_EN

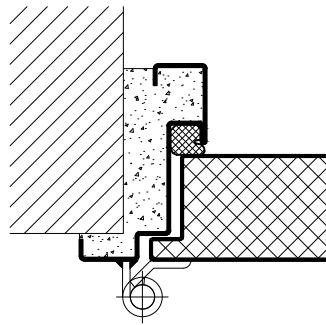
technical modification reserved - edition 07/2024

### PREMIUM Version

object hinges VB-3D

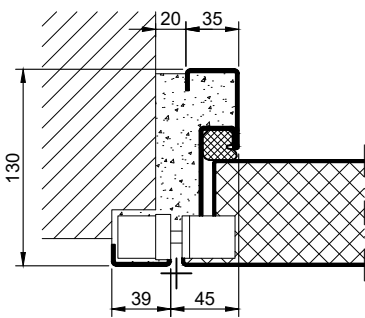


construction hinges



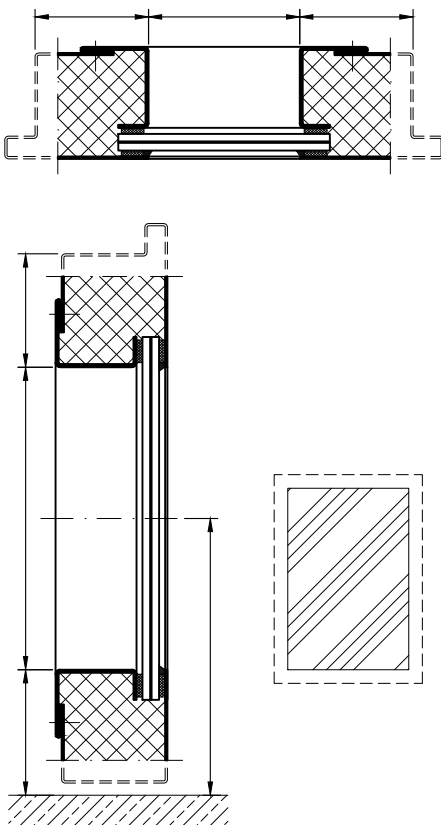
### SUPERIOR Version

concealed hinges

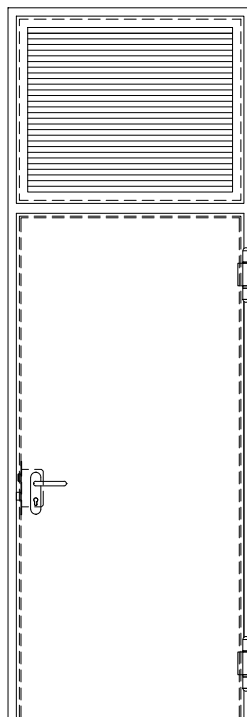


### Options

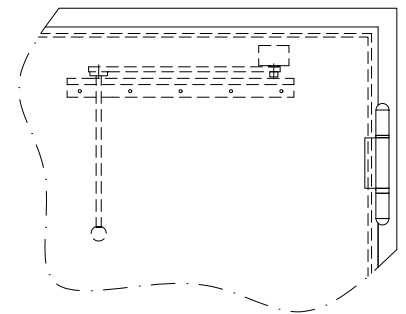
glazing



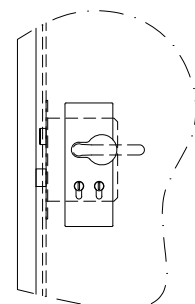
upper ventilation grille



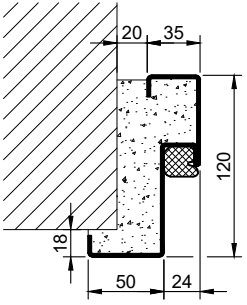
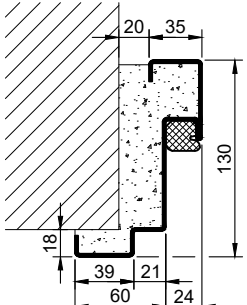
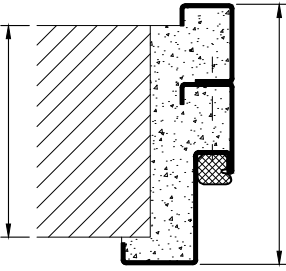
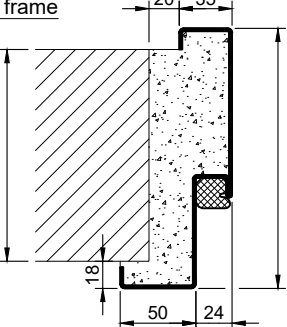
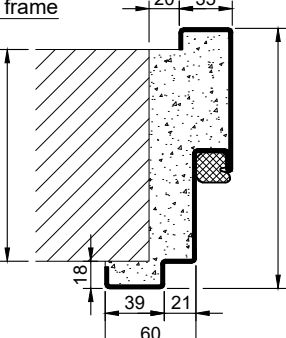
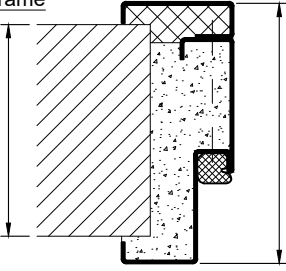
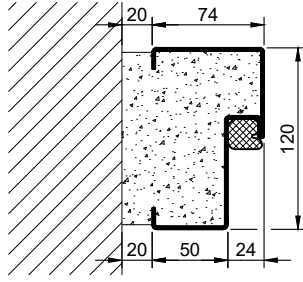
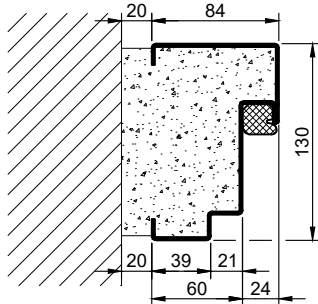
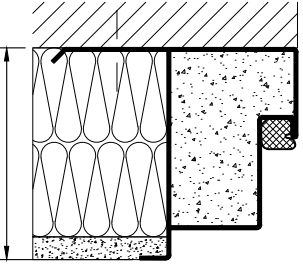
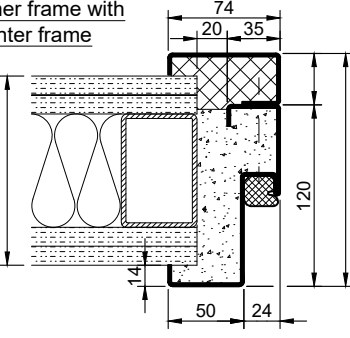
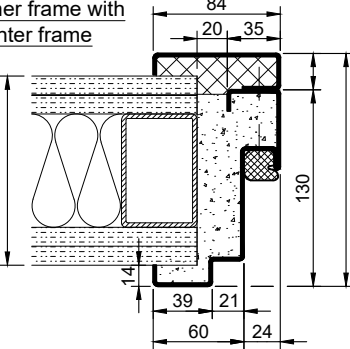
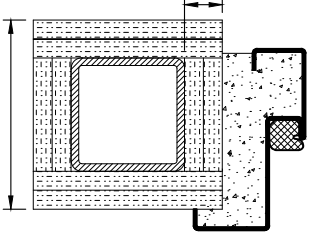
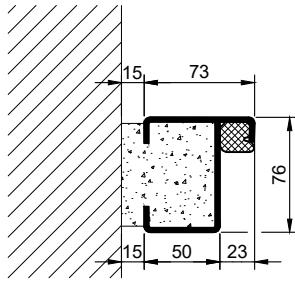
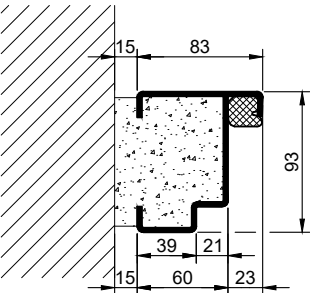
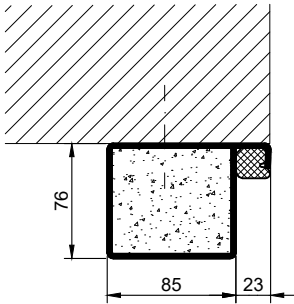
hold-open unit



lock with 2 profile cylinder punches

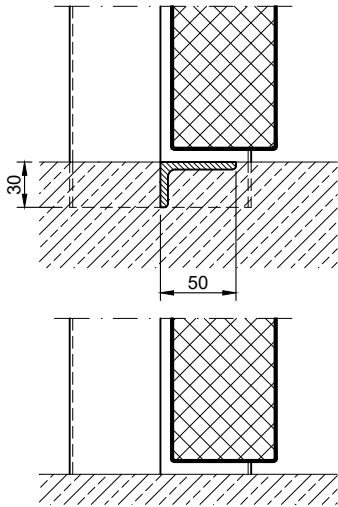


9.10.1\_PLANE LINE PL 2\_TRAFO\_EN

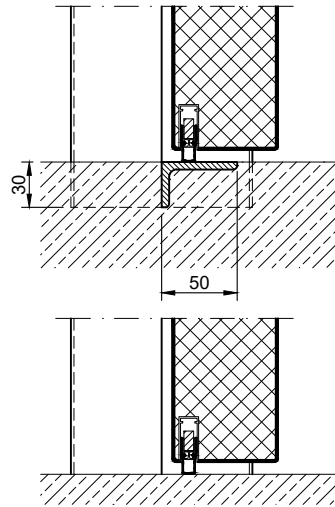
Frames BASIC	Frames PREMIUM/SUPERIOR	Variants (illustration BASIC)
<p>corner frame</p> 	<p>corner frame</p> 	<p>corner frame with additional frame</p> 
<p>encasing frame</p> 	<p>encasing frame</p> 	<p>encasing frame with counter frame</p> 
<p>block frame</p> 	<p>block frame</p> 	<p>juttet block frame</p> 
<p>corner frame with counter frame</p> 	<p>corner frame with counter frame</p> 	<p>corner frame at support / pillar</p> 
<p>profile block frame</p> 	<p>profile block frame</p> 	<p>pre-wall frame</p> 

### Thresholds

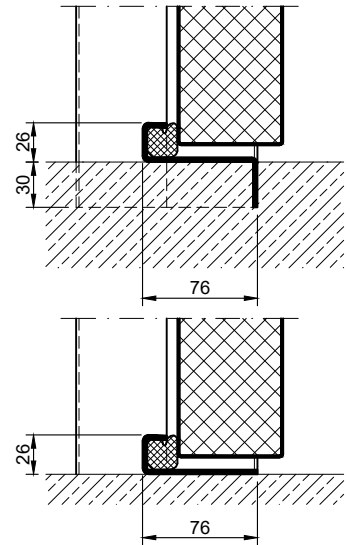
separation sill



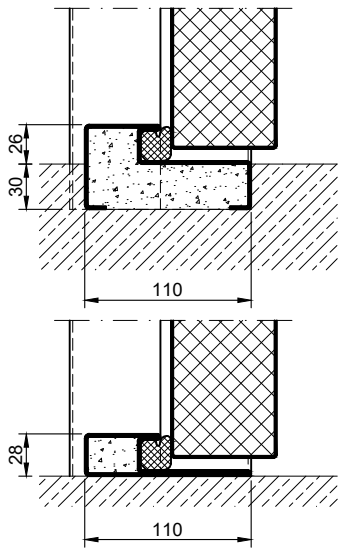
drop seal



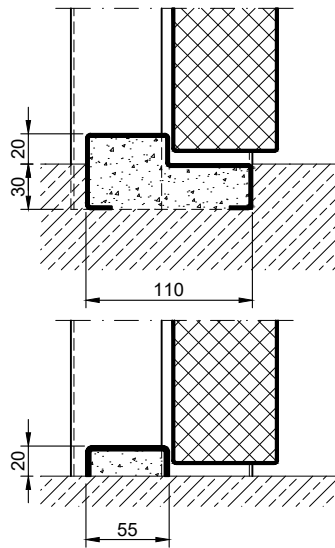
stop sill with seal



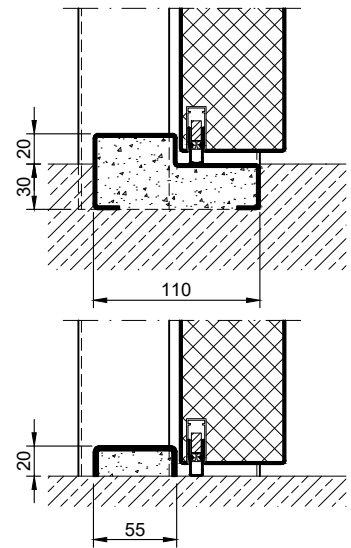
stop sill with seal



stop sill without seal



stop sill with drop seal



full sill

