

Single Leaf PLANE Line Detention Door

Tested according to the VfS planning guideline for detention doors 2016.

Optional Audited Additional Functions

- Safety	Static and dynamic load in acc. to RC2/RC3/RC4	
- Sound Insulation	bis $R_{w,P}$ 54dB	tested acc. to EN ISO 10140-2
- Burglar Protection	RC2/RC3/RC4	tested acc. to EN 1627
- Fire Protection	up to T90 / EI₂90	tested acc. to EN 1634-1
- Smokeproof	RS / S₂₀₀	tested acc. to EN 1634-3
- Version for Detention Rooms		
- Stainless Steel		

Range of Dimension

Width from 500 mm to 1500 mm
Height from 500 mm to 3000 mm

Technical Specification and Tender Text

Product:	PL1 single leaf detention door brand Buchele tested acc. to VfS planning guideline
Door Type:	PLANE Line PL 1 (ZT) BASIC
Structural Opening: x mm
Door Leaf:	Double-walled, planar 70 mm thick steel door leaf without hinge embossing, three sides rebated with thick rebate. Without bottom stop. Special insulating inserts fully laid-in and glued. Securing pin screwed in door leaf rebate.
Threshold:	Floor bracket as separation sill. Surface galvanized and welded to the frame.
Frame:	3-sided circumferential rebated corner frame out of 3,0 mm folded steel sheet. High-quality multi chamber sealing profile adjustable fixed in the three-sided groove.
Hinges:	Three-part, height adjustable construction hinges with hinge pin retention and ball bearing spacer ring for smooth door movement.
Fitting:	2-point security mortise lock with latch lever function acc. to EN 12209 (prepared for installation of a profile cylinder lock, provided by customer) Security door handle set in acc. to EN 1906 fixed pivoted, stainless steel, in U-shape with rounded long-plate.
Surface:	Door leaf and frame galvanized und primed with 2K-PUR primer (Very High Solid) similar RAL 7035.

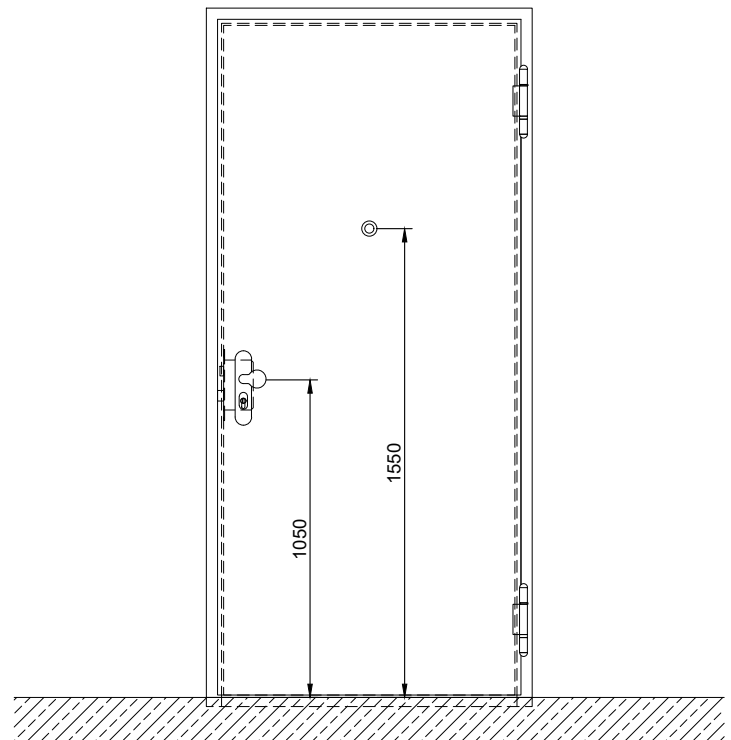
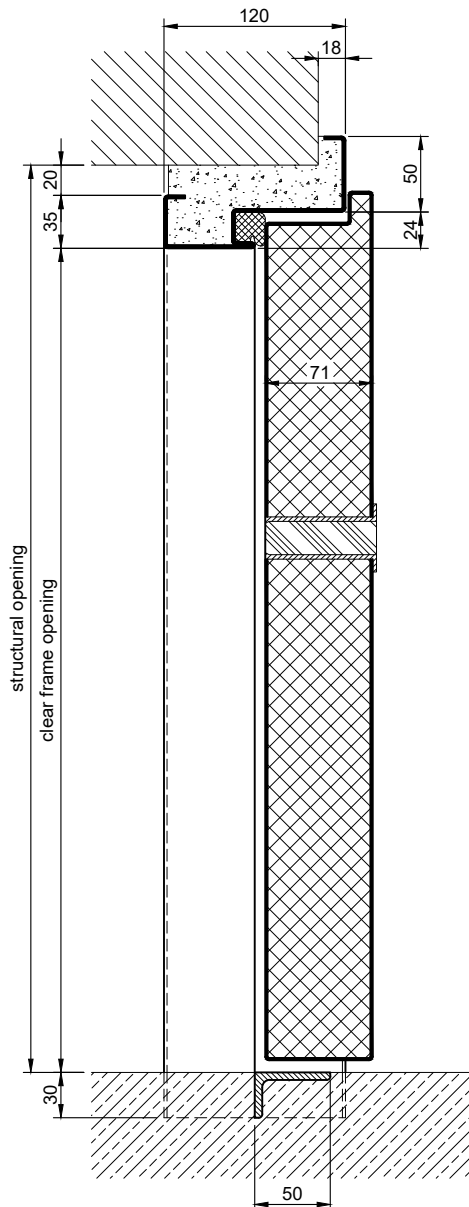
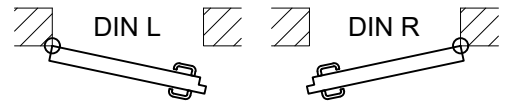
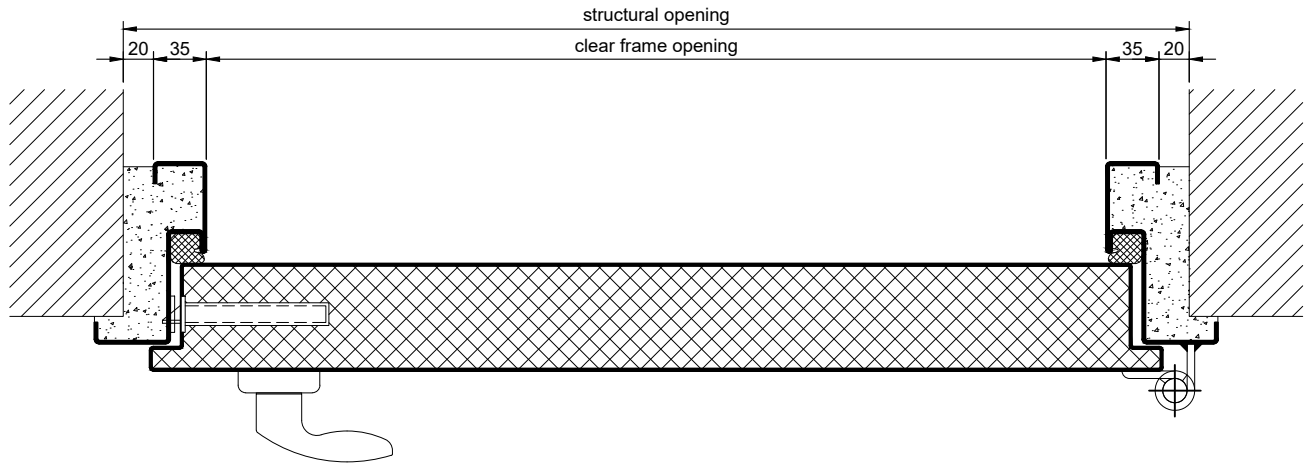
Alternative: PLANE Line PL 1 PREMIUM with flush mounted optics

- Frame:** 3-sided circumferential rebated PLANE Line special corner frame for flush mounted optics on hinge side.
High-quality multi-chamber sealing profile adjustable fixed in the three-sided groove.
- Hinges:** Three-part, height adjustable construction hinges with hinge pin retention and ball bearing spacer ring for smooth door movement.

Supplementary Equipment

- Detention Lock:** Prepared for installation of a detention lock with integrated deadbolt lock. Locking status indicator.
Please note: The exact lock type must be agreed with Buchele.
- Quick Release Fastener:** Concealed shoot bolt lock upwards and downwards as part of the lock with handle lever or as additional lock with handle lever and foot operated mechanism.
- Glazing:** P6B single or insulating glazing fixed with profiled glazing bars. Minimum border 125 mm on side and top, base 300 mm.
- Functional Fanlight:** Made of shatterproof P6B safety glass for lighting and observation technology.
- Food Hatch / Shackle Hatch:** Flush-mounted in the door leaf. Free cross-section 260x200 mm. Flap hinged at the bottom and locked at 90°. Prepared for installation of a detention lock with locking latch and locking status indicator.
Please note: The exact lock type must be agreed with Buchele. Key rose mounted on hinge side.
- Wide Angel Door Viewer:** Flush-mounted in the door leaf, without screwing on cell side. Installation 1550 mm from top edge of finished floor.
- Rotating Door Viewer:** Functions: wide-angle door viewer / pill hatch / closed. Adjustment by turning with hexagon key.
- Protective Sheet:** Stainless steel sheet in the area of the lock and handle or along the entire height of the door leaf.
- Stainless Steel:** Material 1.4301 (V2A) or 1.4404 (V4A), Surface mill finish or brushed.

BASIC - Version

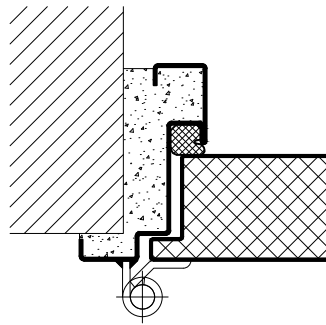


8.0.1_PLANE LINE PL 1 ZT_EN

technical modifications reserved - edition 07/2024

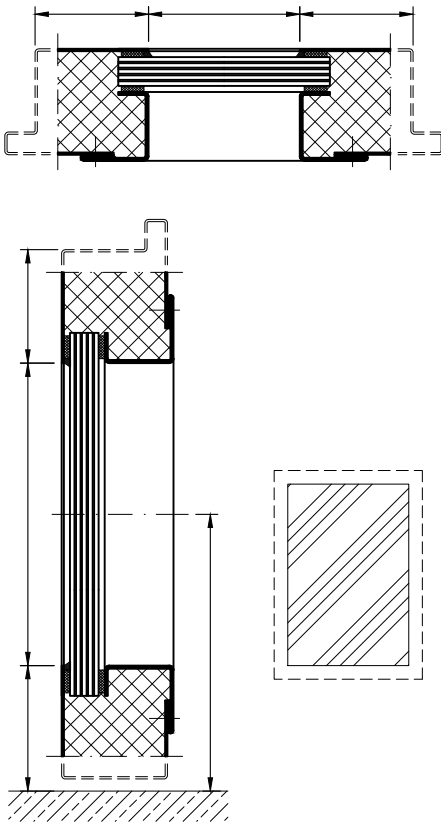
PREMIUM - Version

construction hinges

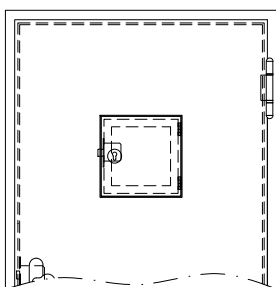


Options

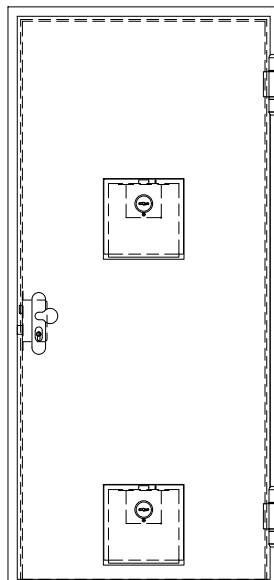
vision panel



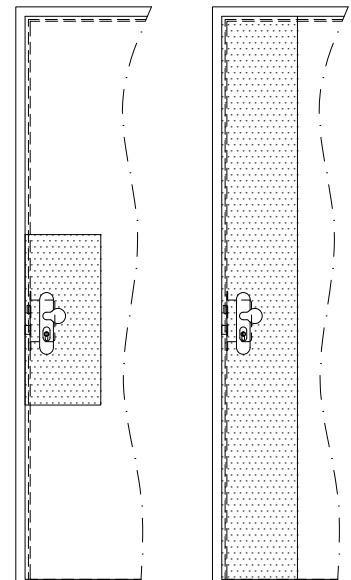
cover flap for vision panel



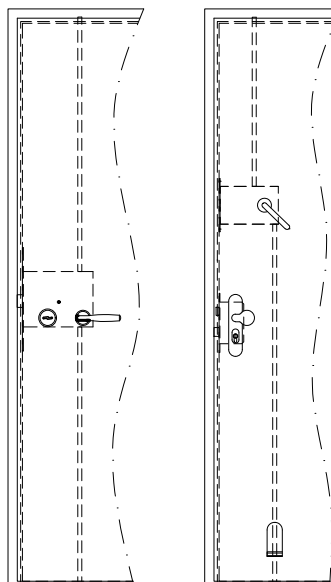
food hatch and/or shackle hatch



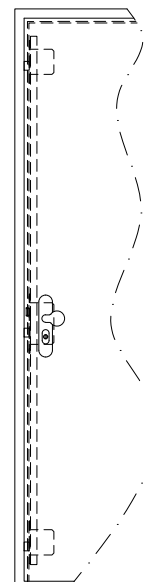
protective sheet



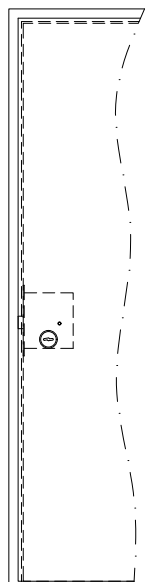
quick release fastener

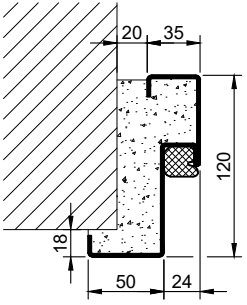
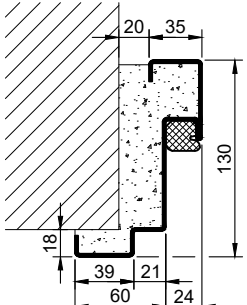
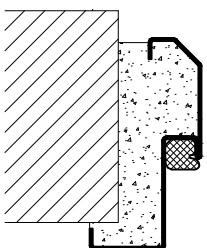
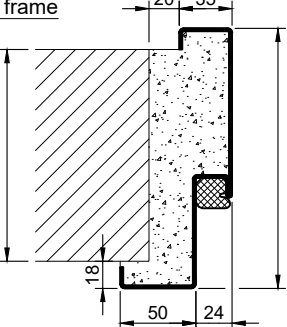
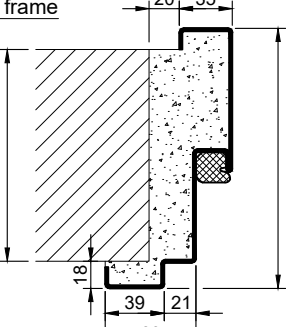
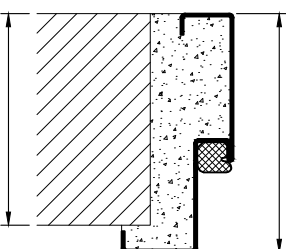
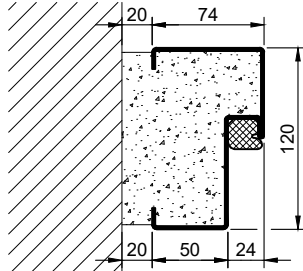
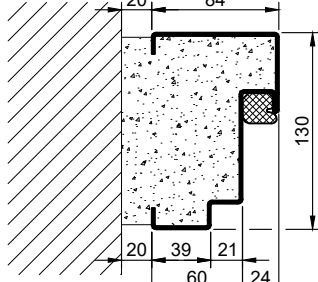
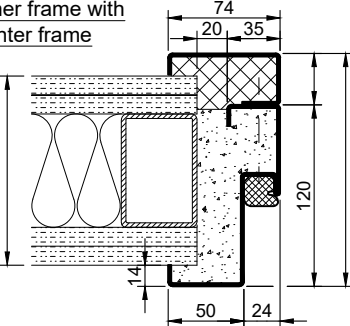
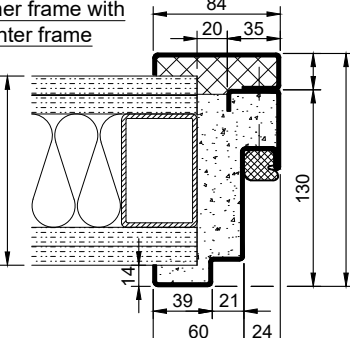
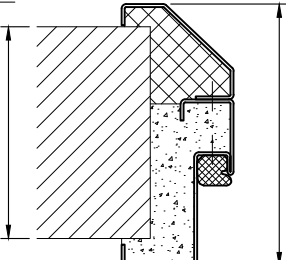
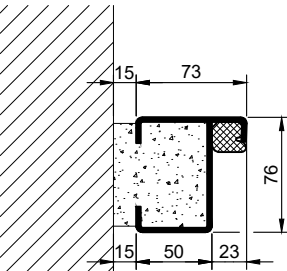
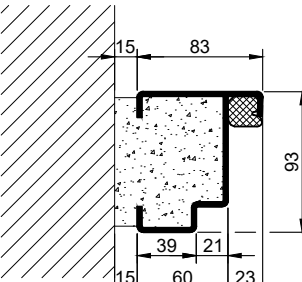
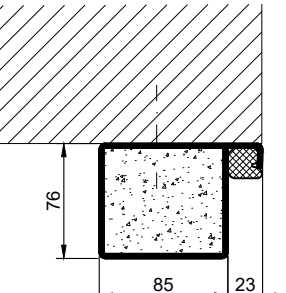


multi point locking device



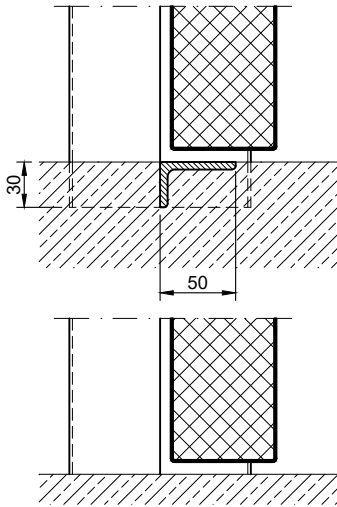
detention lock



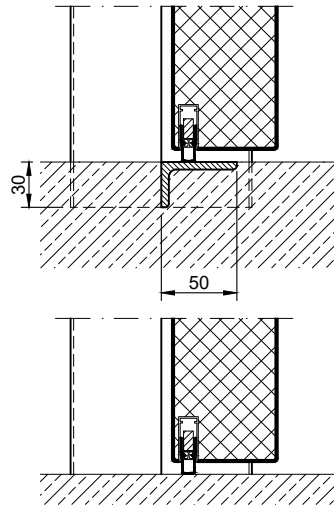
Frames BASIC	Frames PREMIUM / SUPERIOR	Variants (illustration BASIC)
<p>corner frame</p> 	<p>corner frame</p> 	<p>corner frame, chamfered</p> 
<p>encasing frame</p> 	<p>encasing frame</p> 	<p>encasing frame flush to the wall</p> 
<p>block frame</p> 	<p>block frame</p> 	
<p>corner frame with counter frame</p> 	<p>corner frame with counter frame</p> 	<p>corner frame with counter frame, chamfered</p> 
<p>profile block frame</p> 	<p>profile block frame</p> 	<p>pre-wall frame</p> 

Thresholds

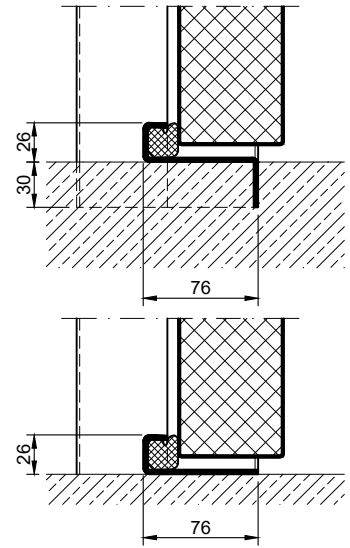
separation sill



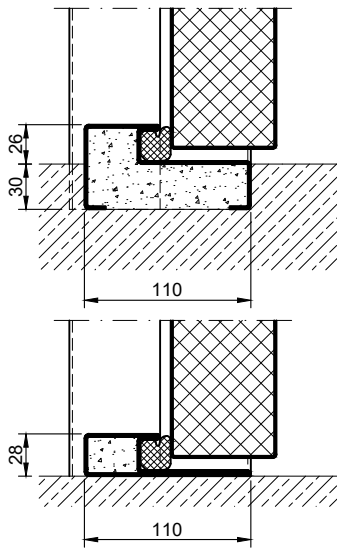
drop seal



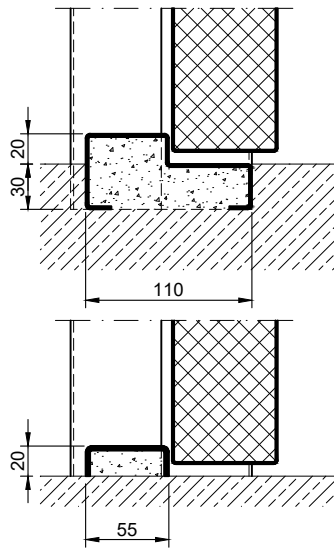
stop sill with seal



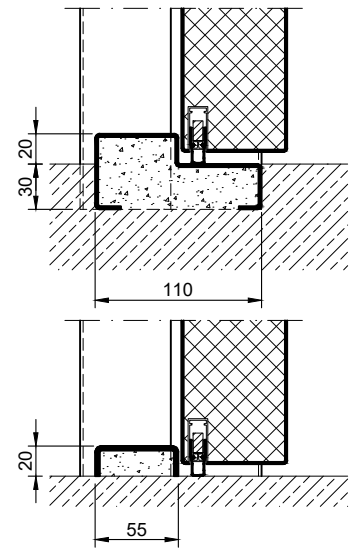
stop sill with seal



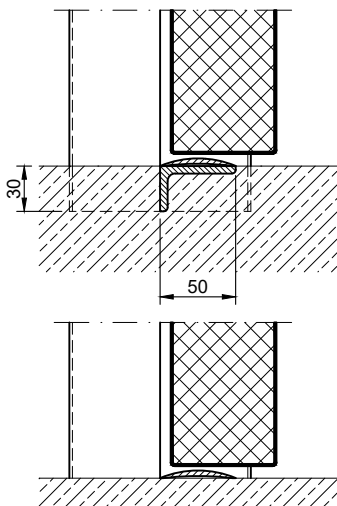
stop sill without seal



stop sill with drop seal



separation sill with half round sill



full sill

