

Single Leaf Flood Door

Water Tight

(water side is hinge side)

up to 3,5 m WS (water column)

Leakage 0,02 l / h (laboratory value)

Optional Audited Additional Functions

- Burglar Protection	RC2/RC3/RC4	tested acc. to EN 1627
- Air Tight	up to class 4	tested acc. to DIN EN 1026
- Rain- and Fire-Water Tight	class 6A	tested acc. to DIN EN 1027
- Wind Load Resistance	class C5	tested acc. to DIN EN 12211
- Stainless Steel		

Range of Dimension

Width from 625 mm to 1250 mm

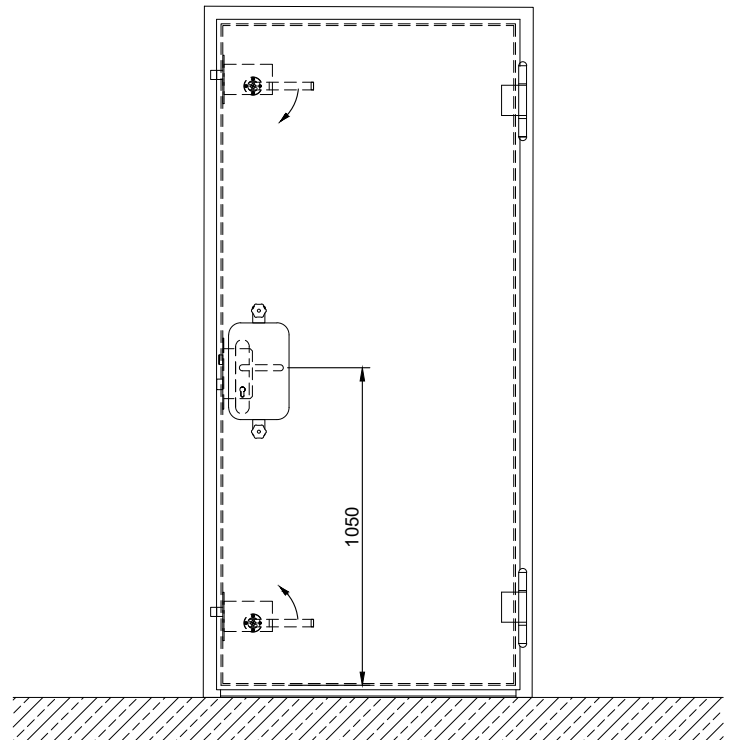
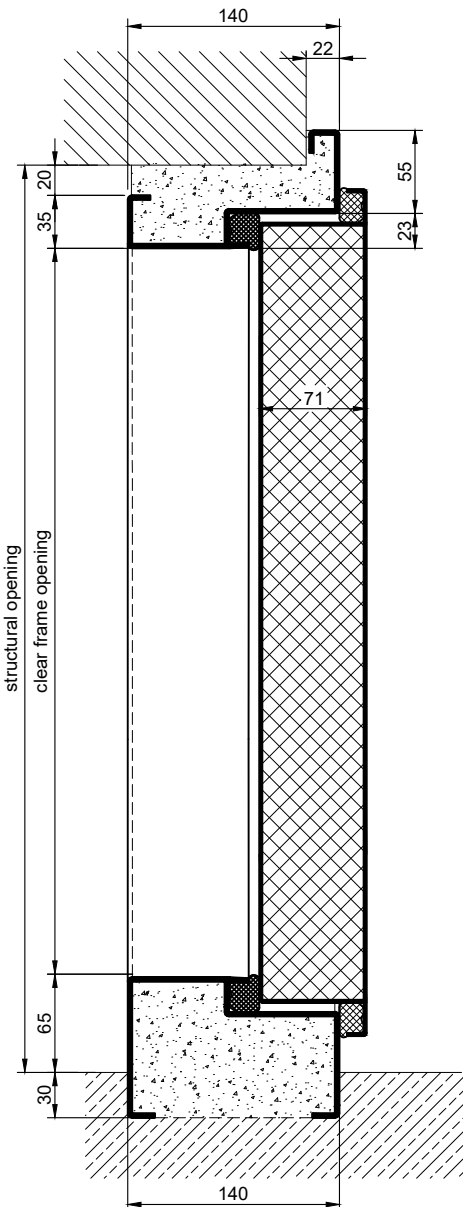
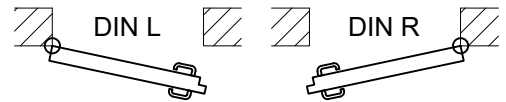
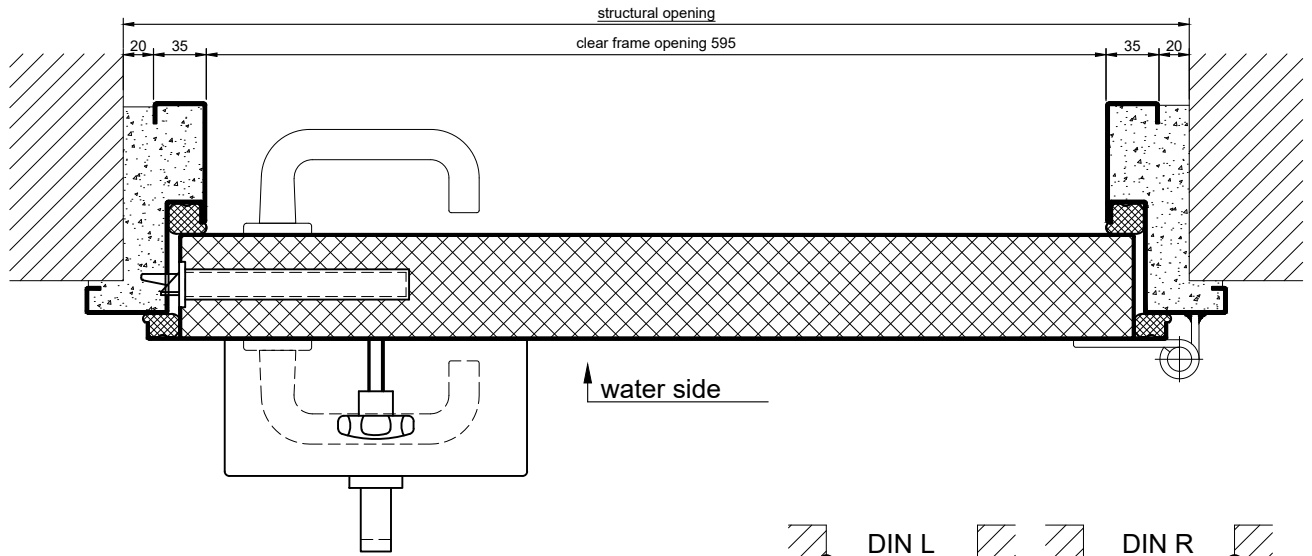
Height from 1500 mm to 2250 mm

Technical Specification and Tender Text

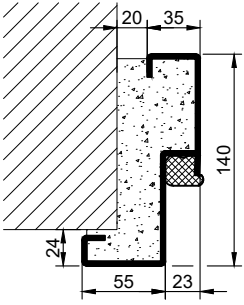
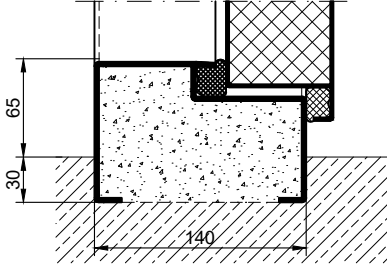
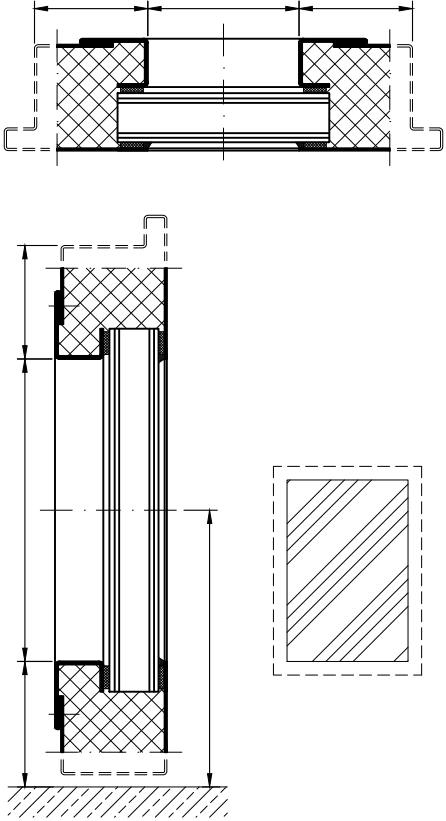
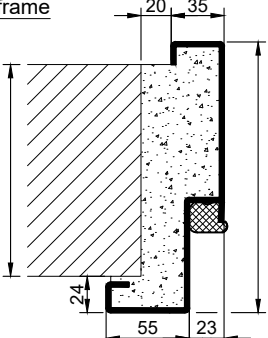
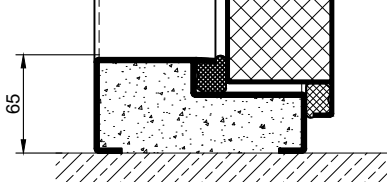
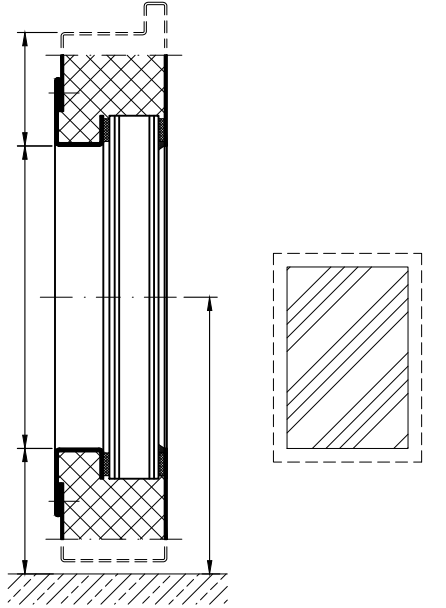
Product:	HT 1 – 3,5 single leaf flood door brand Buchele
Door Type:	Flood Line HT 1 – 3,5
Water Tight:	up to 3,5 m WS (water side is hinge side) leakage 0,02 l / h (laboratory value)
Structural Opening: x mm
Door Leaf:	Double-walled, planar 70 mm thick steel door, four sides rebated with thick rebate and adjustable fixed ozone- and waste water resistant sealing profile in the rebate. Special insulating inserts fully laid-in and glued.
Frame:	4-sided circumferential rebated corner frame with adjustable fixed ozone und waste water resistant sealing profile in the four-sided groove.
Hinges:	Three-part, height adjustable construction hinges with hinge pin retention and ball bearing spacer ring for smooth door movement.
Fitting:	Wedge clamping lock in solid version with heavy-duty locking wedge, spring-loaded lock latch and automatic maloperation system (prepared for installation of a profile cylinder lock, provided by customer). Half door handle set on opposite hinge side acc. to EN 1906 fixed pivoted stainless steel in U-form with rounded short-plate. On hinge side door leaf without cutouts. alternative: Door handle set acc. to DIN EN 1906 fixed pivoted stainless steel in U-shape with rounded short-plate. With watertight cover on hinge side.
Surface:	Door leaf and frame galvanized und primed with 2K-PUR primer (Very High Solid) similar RAL 7035.

Supplementary Equipment

Glazing:	size and type on request
Stainless Steel:	Material 1.4301 (V2A) or 1.4404 (V4A), Surface mill finish or brushed.
BUCHELE DELUXE:	The exclusive surface coating.



7.1.4_FLOOD LINE HT1-3.5_EN

Frames	Thresholds	Options
<p>corner frame</p> 	<p>full sill</p> 	<p>glazing</p> 
<p>encasing frame</p> 		
<p>Blockzarge</p> 