

### Single Leaf Flood Door

#### Water Tight

(water side is hinge side)

**up to 1,5 m WS (water column)**

**Leakage 0,02 l / h (laboratory value)**

#### Optional Audited Additional Functions

- Burglar Protection	<b>RC2/RC3/RC4</b>	tested acc. to DIN EN 1627
- Air Tight	<b>up to class 4</b>	tested acc. to DIN EN 1026
- Rain- and Fire-Water Tight	<b>class 6A</b>	tested acc. to DIN EN 1027
- Wind Load Resistance	<b>class C5</b>	tested acc. to DIN EN 12211
- Stainless Steel		

#### Range of Dimension

**Width from 625 mm to 1250 mm**

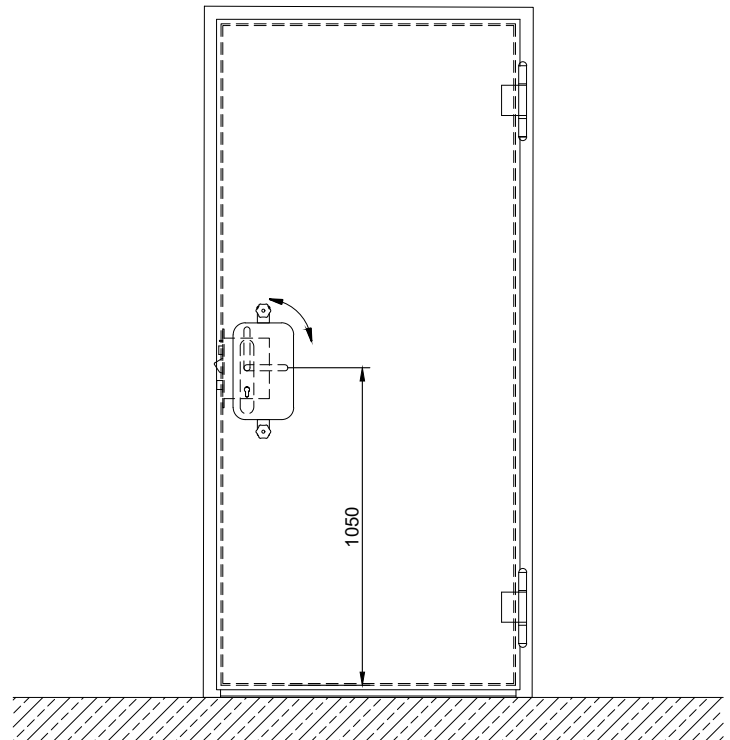
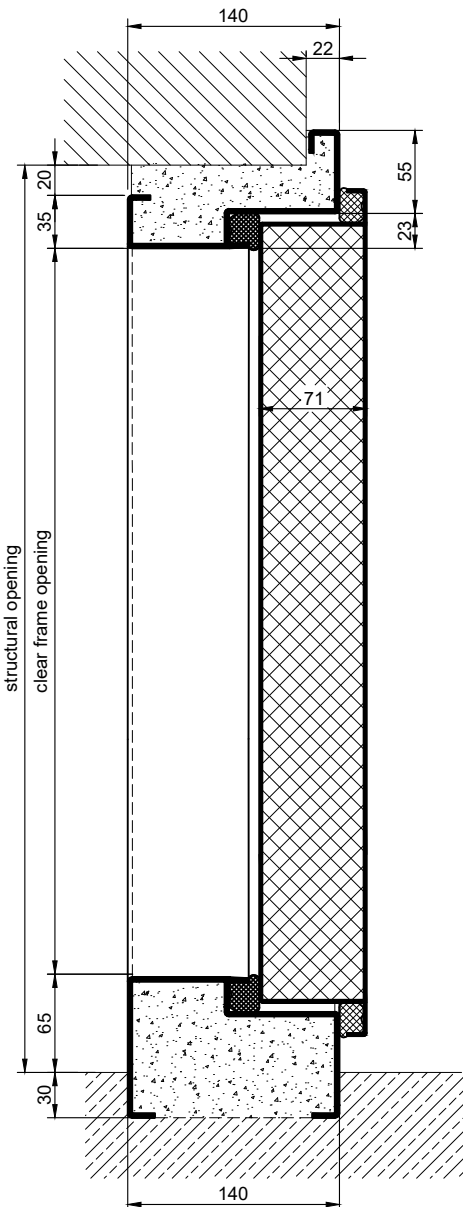
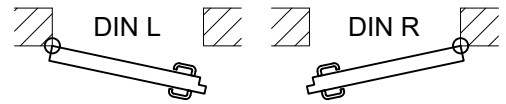
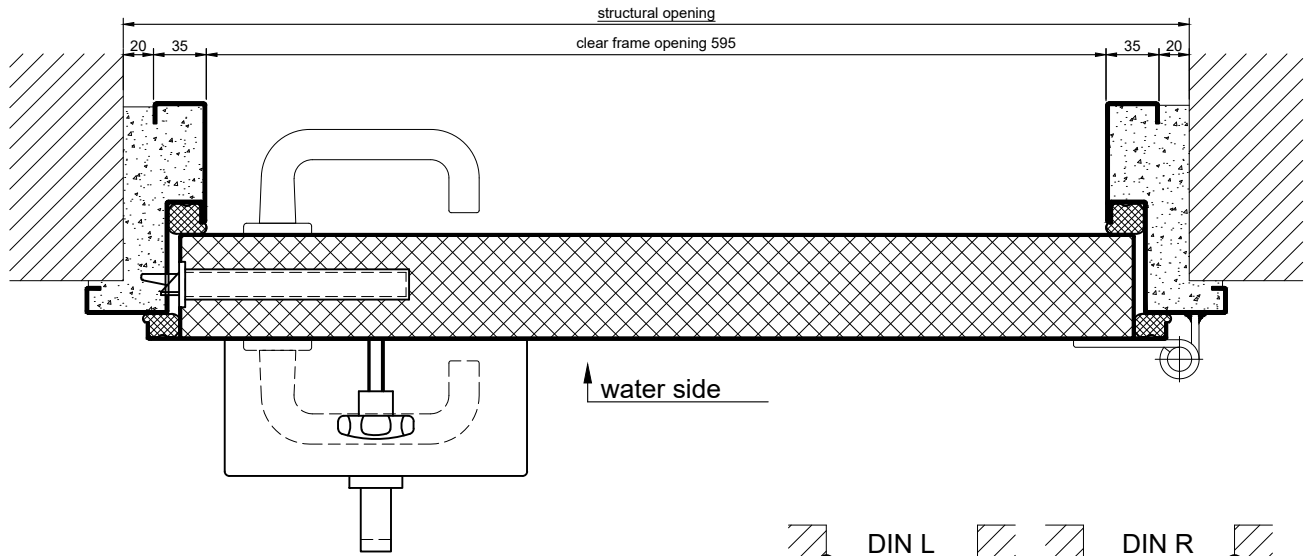
**Height from 1500 mm to 2250 mm**

#### Technical Specification and Tender Text

<b>Product:</b>	<b>HT 1 – 1,5 single leaf flood door brand Buchele</b>
<b>Door Type:</b>	<b>Flood Line HT 1 – 1,5</b>
<b>Water Tight:</b>	<b>up to 1,5 m WS (water side is hinge side) leakage 0,02 l / h (laboratory value)</b>
<b>Structural Opening:</b>	<b>.... x .... mm</b>
<b>Door Leaf:</b>	Double-walled, planar 70 mm thick steel door, four sides rebated with thick rebate and adjustable fixed ozone- and waste water resistant sealing profile in the rebate. Special insulating inserts fully laid-in and glued.
<b>Frame:</b>	4-sided circumferential rebated corner frame with adjustable fixed ozone and waste water resistant sealing profile in the four-sided groove.
<b>Hinges:</b>	Three-part, height adjustable construction hinges with hinge pin retention and ball bearing spacer ring for smooth door movement.
<b>Fitting:</b>	Wedge clamping lock in solid version with heavy-duty locking wedge, spring-loaded lock latch and automatic maloperation system (prepared for installation of a profile cylinder lock, provided by customer). Door handle set acc. to EN 1906 fixed pivoted stainless steel in U-shape with rounded long-shield. With water tight cover on hinge side.
<b>Surface:</b>	Door leaf and frame galvanized und primed with 2K-PUR primer (Very High Solid) similar RAL 7035.

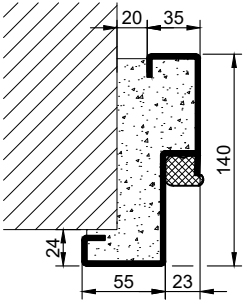
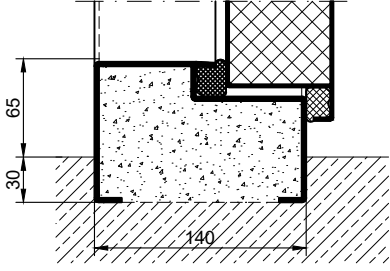
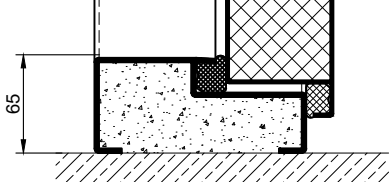
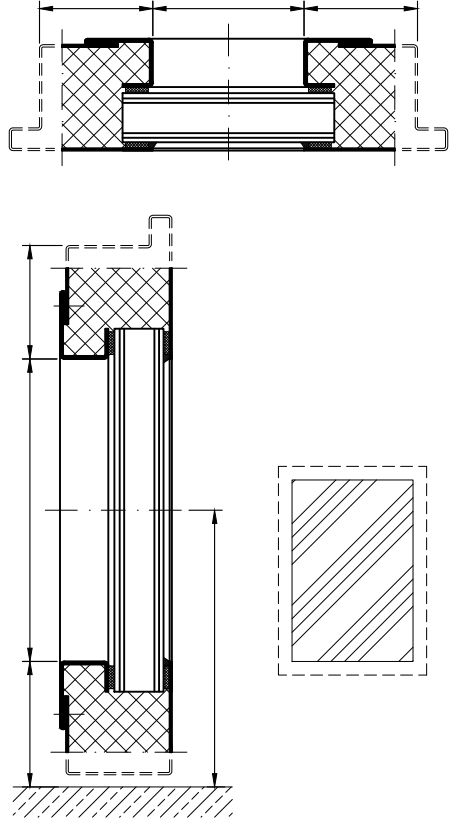
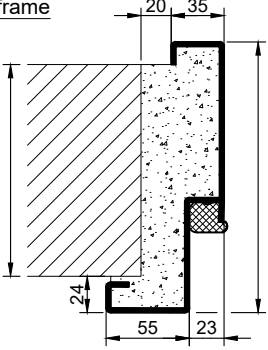
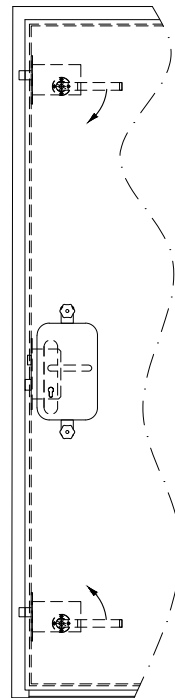
#### Supplementary Equipment

<b>Glazing:</b>	size and type on request
<b>Stainless Steel:</b>	Material 1.4301 (V2A) or 1.4404 (V4A), Surface mill finish or brushed.
<b>BUCHELE DELUXE:</b>	The exclusive surface coating.



7.1.3\_FLOOD LINE HT1-1,5\_EN

technical modifications reserved - edition 07/2024

Frames	Thresholds	Options
<p>corner frame</p> 	<p>full sill</p>  	<p>glazing</p> 
<p>encasing frame</p> 		<p>clamping locks</p> 
<p>block frame</p> 