

Single Leaf PLANE Line Air Tight Steel Door

Air Tight**class 4****tested acc. to EN 1026**

Optional Audited Additional Functions

- Sound Insulation	up to $R_{w,P}$ 54dB	tested acc. to EN ISO 10140-2
- Burglar Protection	RC2/RC3/RC4/RC5	tested acc. to EN 1627
- Bullet Resistance	FB4/FB6-NS	tested acc. to EN 1522
- Rain- and Fire-Water Tight	class 6A	tested acc. to EN 1027
- Wind Load Resistance	up to class C5	tested acc. to EN 12211
- Blast Resistance	up to 20 kPa	tested acc. to EN 13124-1
- Explosion Protection	up to zone 1/21	acc. to EN 1127-1 or ATEX 2014/34/EU
- Stainless Steel		

Range of Dimension

Width from 500 mm to 1500 mm
Height from 500 mm to 3000 mm

Technical Specification and Tender Text

Product:	PL 1 single leaf air tight steel door brand Buchele tested acc. to EN ISO 1026
Door Type:	PLANE Line PL 1 BASIC
Air Tight Class:	4
Structural Opening: x mm
Door Leaf:	Double-walled, planar 70 mm thick steel door without hinge embossing, three sides rebated with thick rebate Without bottom stop. Special insulating inserts fully laid-in and glued. Drop sealing system.
Threshold:	Stop sill with high-quality multi-chamber sealing profile, adjustable fixed in the rebate. Surface galvanized and welded to the frame.
Frame:	3-sided circumferential rebated corner frame. High-quality multi chamber sealing profile adjustable fixed in the three-sided groove.
Hinges:	Three-part, height adjustable construction hinges with hinge pin retention and ball bearing spacer ring for smooth door movement.
Fitting:	Mortise lock with latch lever function acc. to EN 12209 (prepared for installation of a profile cylinder lock, provided by customer). Door handle set in acc. to EN 1906 fixed pivoted synthetic material black in U-shape with rounded short-plate.
Surface:	Door leaf and frame galvanized und primed with 2K-PUR primer (Very High Solid) similar RAL 7035.

Alternative: PLANE Line PL 1 PREMIUM with flush mounted optics

- Frame:** 3-sided circumferential rebated PLANE Line special corner frame for flush mounted optics on hinge side.
High-quality multi-chamber sealing profile adjustable fixed in the three-sided groove.
- Hinges:** Object hinges type VB-3D 160 adjustable in three dimensions.
Fixture element with slide bearings inside for smooth door movement.

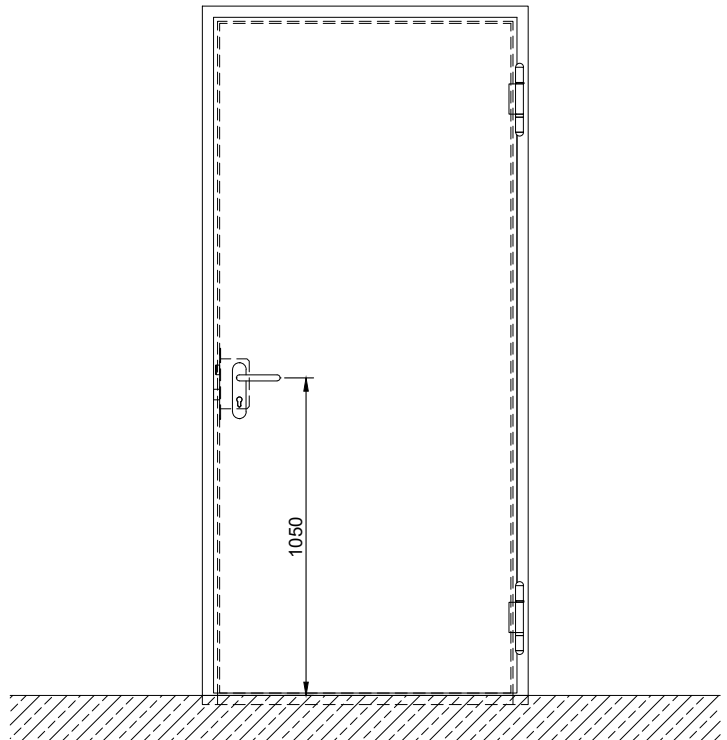
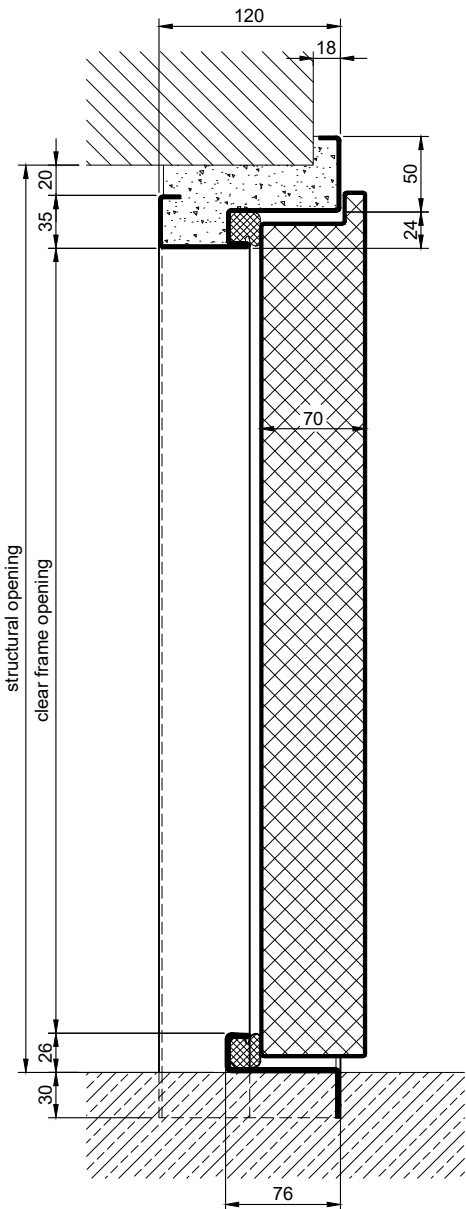
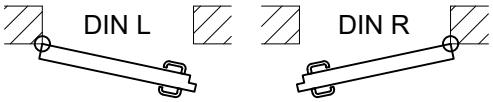
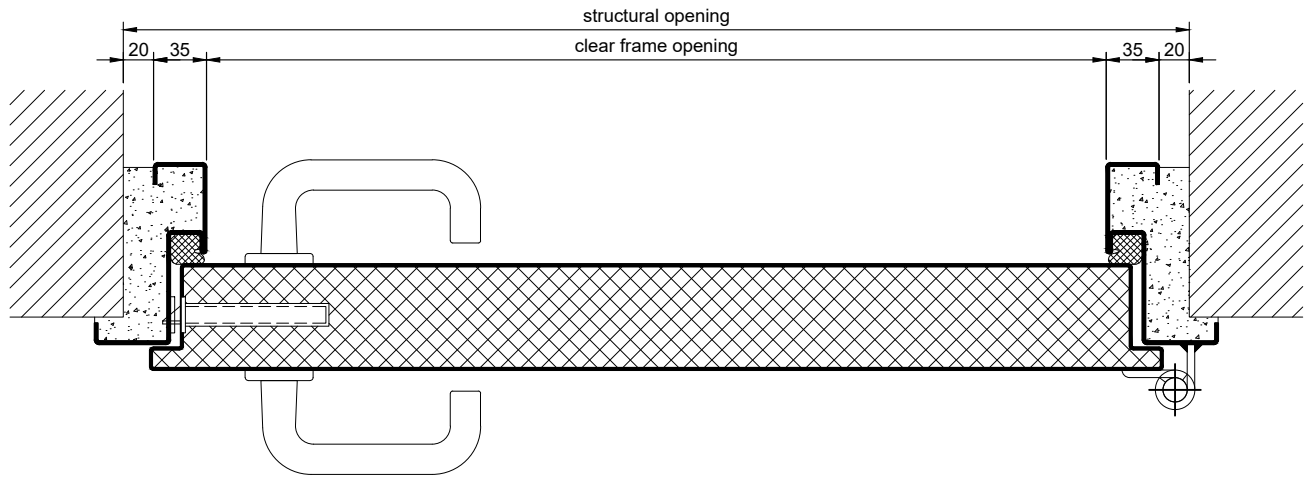
Alternative: PLANE Line PL 1 SUPERIOR with flush mounted optics

- Frame:** 3-sided circumferential rebated PLANE Line special corner frame for flush mounted optics on hinge side.
High-quality multi-chamber sealing profile adjustable fixed in the three-sided groove.
- Hinges:** Concealed hinge system adjustable in three dimensions.

Supplementary Equipment

- Standard Glazing:** Single glazing or insulating glazing fixed with profiled and visible screwed steel glazing bars.
Minimum border 125 mm on side and top, base 300 mm.
- Flush Glazing:** PLANE Line special triple-glazing flush mounted with outer edge of door leaf on hinge side and opposite hinge side.
Edge enamelling and permanent elastic glazing joint in colour black RAL 9004.
Minimum border 125 mm on side and top, base 300 mm.
- Stainless Steel:** Material 1.4301 (V2A) or 1.4404 (V4A),
Surface mill finish or brushed.
- BUCHELE DELUXE:** The exclusive surface coating.

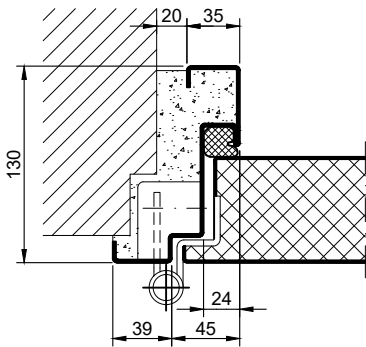
BASIC Version



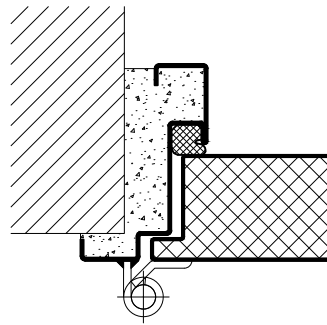
6.0.3_PLANE LINE PL 1 LD4_EN

PREMIUM Version

object hinges VB-3D

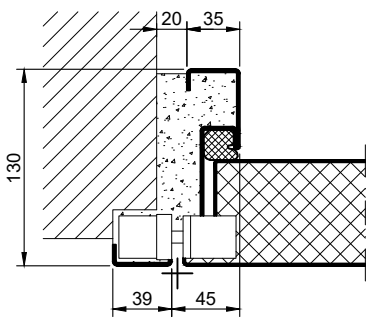


construction hinges



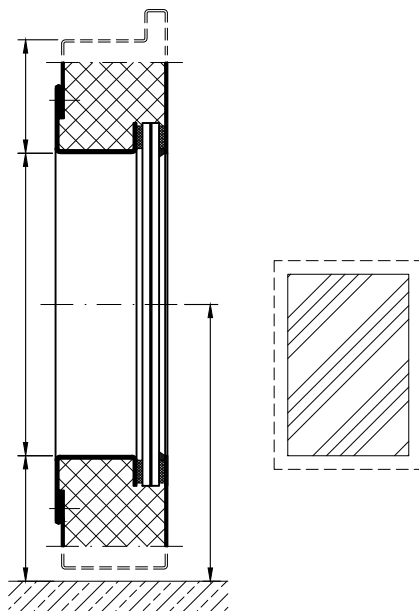
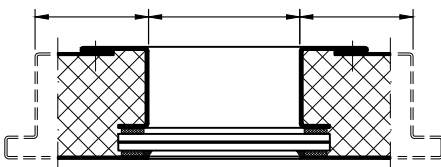
SUPERIOR Version

concealed hinges

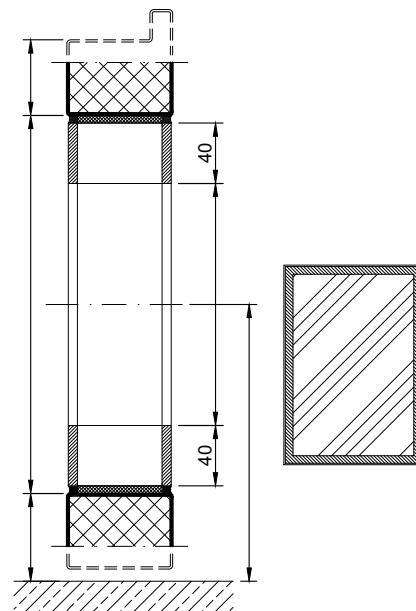
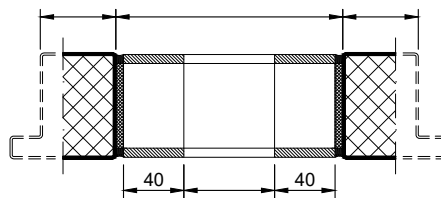


Options

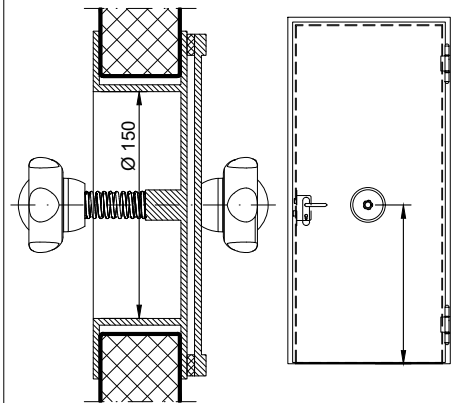
glazing

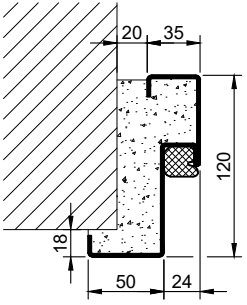
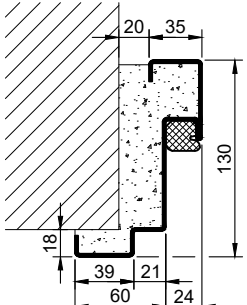
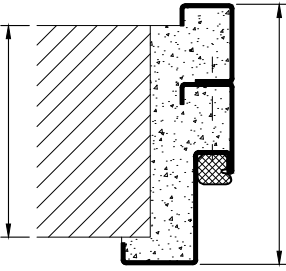
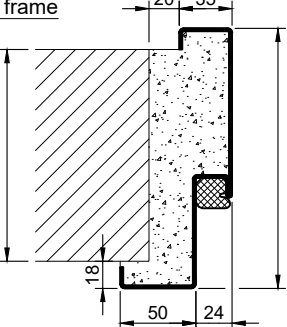
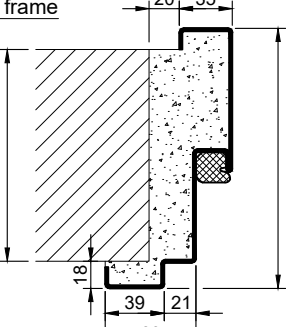
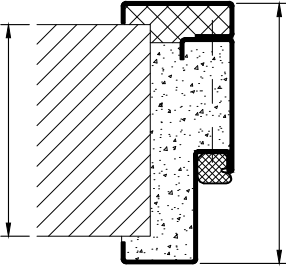
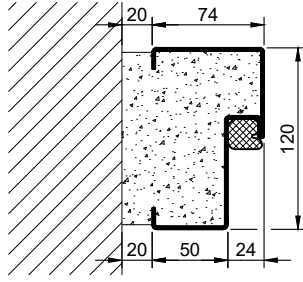

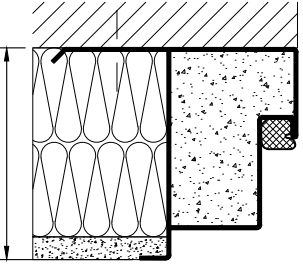
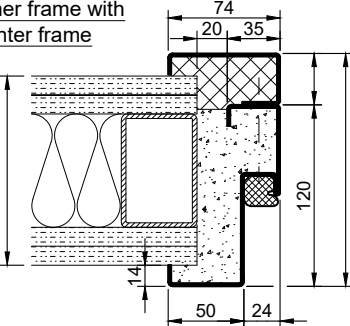
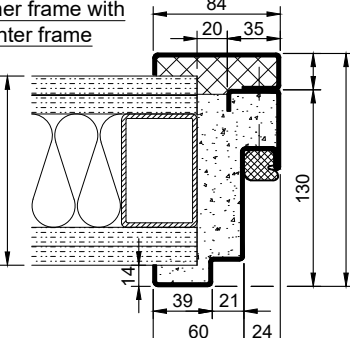
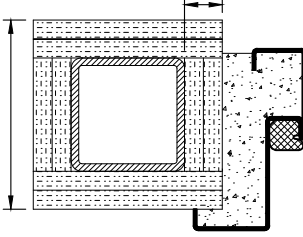
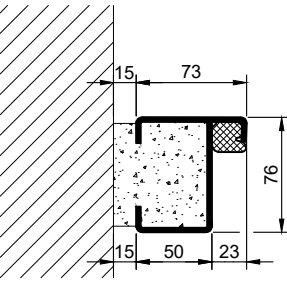
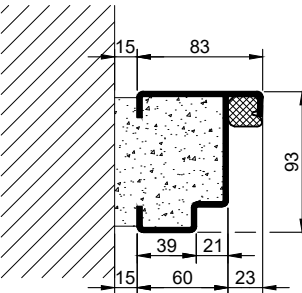
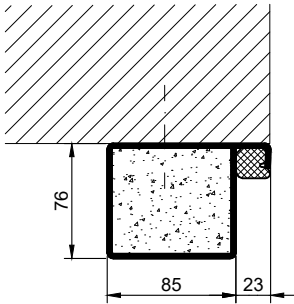


flush glazing



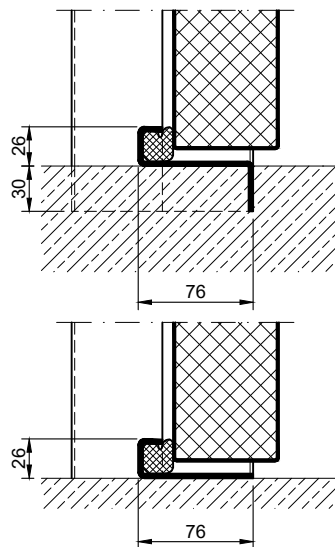
pressure compensation valve



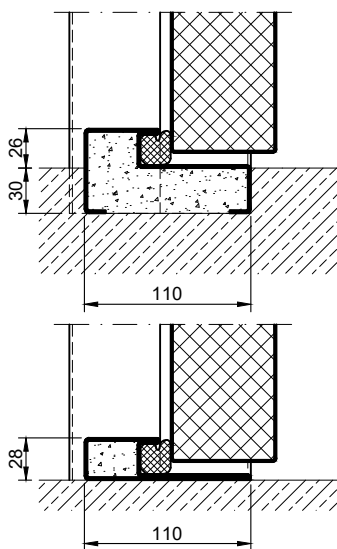
Frames BASIC	Frames PREMIUM / SUPERIOR	Variants (illustration BASIC)
<p>corner frame</p> 	<p>corner frame</p> 	<p>corner frame with additional frame</p> 
<p>encasing frame</p> 	<p>encasing frame</p> 	<p>encasing frame with counter frame</p> 
<p>block frame</p> 	<p>block frame</p> 	<p>juted block frame</p> 
<p>corner frame with counter frame</p> 	<p>corner frame with counter frame</p> 	<p>corner frame at support / pillar</p> 
<p>profile block frame</p> 	<p>profile block frame</p> 	<p>pre-wall frame</p> 

Thresholds

stop sill with seal



stop sill with seal



full sill

