

Single Leaf PLANE Line Radon Tight Steel Door

Radon Tight $\leq 0,2 \text{ m}^3/(\text{h}\cdot\text{m}\cdot(\text{daPa})^{2/3})$ **acc. to recommendations of the Federal Office for Radiation Protection**

Optional Audited Additional Functions

- Fire Protection	EI₂30/60/90-SaC5	tested acc. to EN 1634-1
- Smoke Control	RS (S₂₀₀)	tested acc. to EN 1634-3
- Burglar Protection	RC2/RC3/RC4/RC5	tested acc. to EN 1627
- Sound Insulation	up to R_{w,P} 54dB	tested acc. to EN ISO 10140-2
- Bullet Resistance	FB4-NS	tested acc. to EN 1522
- Air Tight	up to class 4	tested acc. to EN 1026
- Rain- and Fire-Water Tight	class 6A	tested acc. to EN 1027
- Wind load Resistance	up to class C5	tested acc. to EN 12211
- Blast Resistance	up to 20 kPa	tested acc. to EN 13124-1
- Explosion Protection	up to zone 1/21	acc. to EN 1127-1 or ATEX 2014/34/EU
- Stainless Steel		

Range of Dimension

Width from 500 mm to 1500 mm
Height from 500 mm to 3000 mm

Technical Specification and Tender Text

Product:	PL1 single leaf radon tight steel door brand Buchele
Door Type:	PLANE Line PL 1 BASIC
Radon Tight:	$\leq 0,2 \text{ m}^3/(\text{h}\cdot\text{m}\cdot(\text{daPa})^{2/3})$
Structural Opening: x mm
Door Leaf:	Double-walled, planar 70 mm thick steel door leaf without hinge embossing, three sides rebated with thick rebate. Special insulating inserts fully laid-in and glued.
Threshold:	Stop sill with high-quality multi-chamber sealing profile, adjustable fixed in the rebate. Surface galvanized and welded to the frame.
Frame:	3-sided circumferential rebated corner frame with high-quality multi chamber sealing profile adjustable fixed in the three-sided groove.
Hinges:	Three-part, height adjustable construction hinges with hinge pin retention and ball bearing spacer ring for smooth door movement.
Fitting:	Mortise lock with latch lever function acc. to EN 12209 (prepared for installation of a profile cylinder lock, provided by customer). Door handle set in acc. to EN 1906 fixed pivoted, black plastic, in U-shape with rounded short-plate.
Surface:	Door leaf and frame galvanized und primed with 2K-PUR primer (Very High Solid) similar RAL 7035.

Alternative: PLANE Line PL 1 PREMIUM with flush mounted optics

- Frame:** 3-sided circumferential rebated PLANE Line special corner frame for flush mounted optics on hinge side.
High-quality multi-chamber sealing profile adjustable fixed in the three-sided groove.
- Hinges:** Object hinges type VB-3D 160 adjustable in three dimensions.
Fixture element with slide bearings inside for smooth door movement.

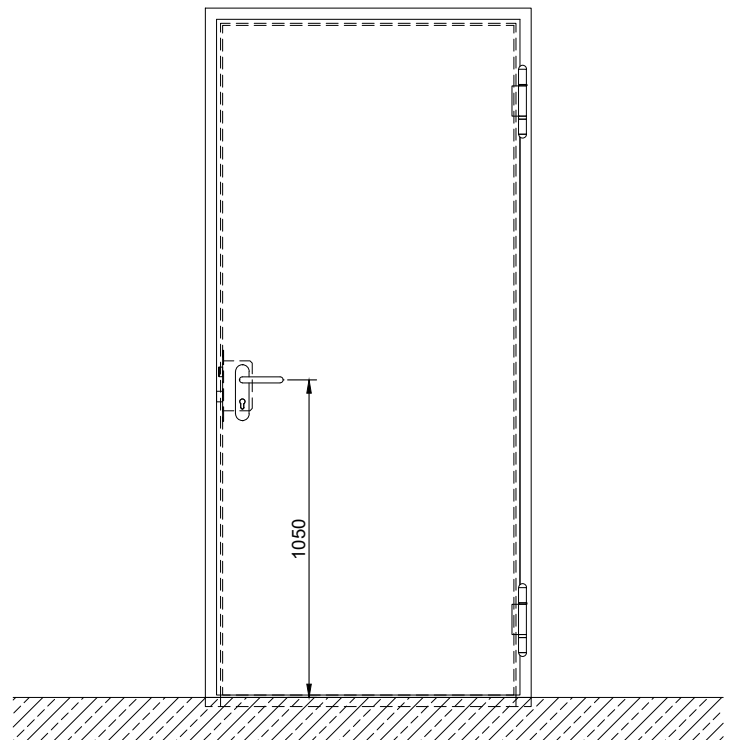
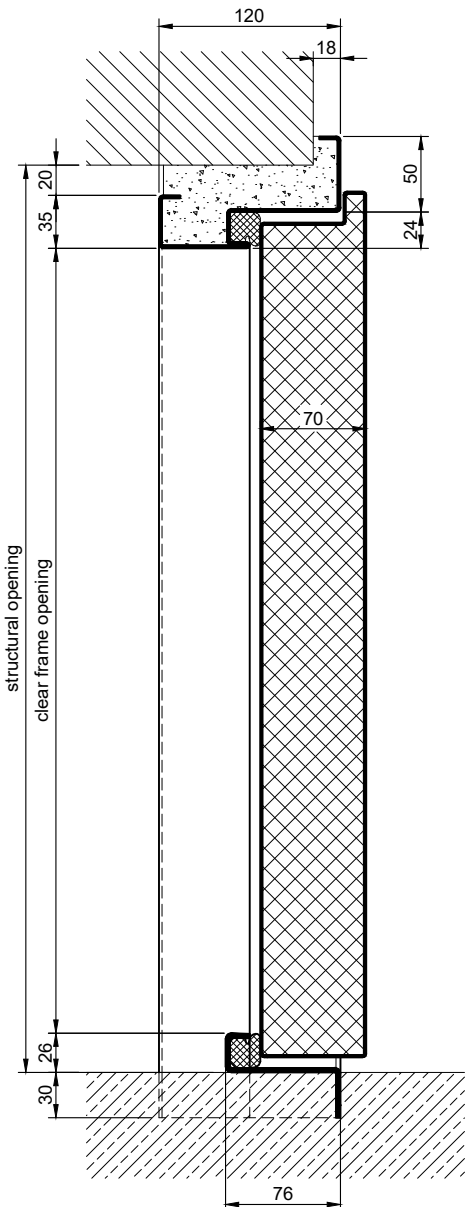
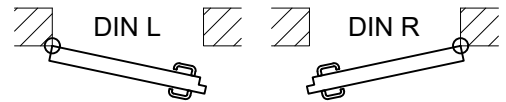
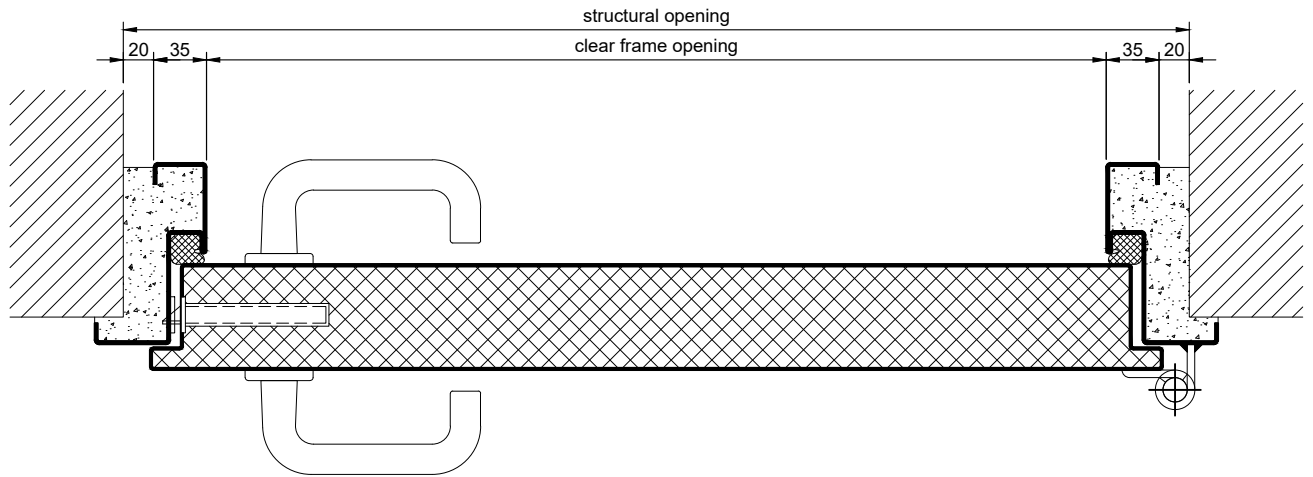
Alternative: PLANE Line PL 1 SUPERIOR with flush mounted optics

- Frame:** 3-sided circumferential rebated PLANE Line special corner frame for flush mounted optics on hinge side.
High-quality multi-chamber sealing profile adjustable fixed in the three-sided groove.
- Hinges:** Concealed hinge system adjustable in three dimensions.

Supplementary Equipment

- Standard Glazing:** Single or insulation glazing fixed with profiled glazing bars and visible screwed glazing bars.
Minimum border 125 mm on side and top, base 300 mm.
- Flush Glazing:** PLANE Line triple special glazing flush mounted with outer edge of door leaf on hinge side and opposite hinge side.
Edge enamelling and permanent elastic glazing joint in colour black RAL 9004.
Minimum border 125 mm on side and top, base 300 mm.
- Stainless Steel:** Material 1.4301 (V2A) or 1.4404 (V4A),
Surface mill finish or brushed.
- BUCHELE DELUXE:** The exclusive surface coating.

BASIC - Ausführung

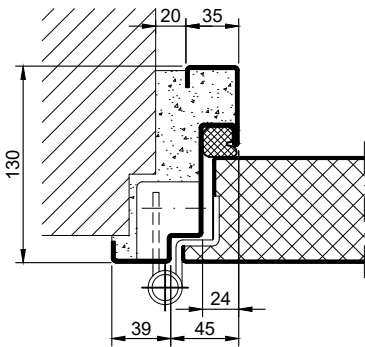


5.1.2_PLANE LINE PL 1 RN_EN

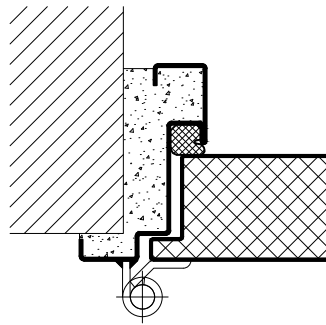
technical modifications reserved - edition - Stand 07/2024

PREMIUM Version

object hinges VB-3D

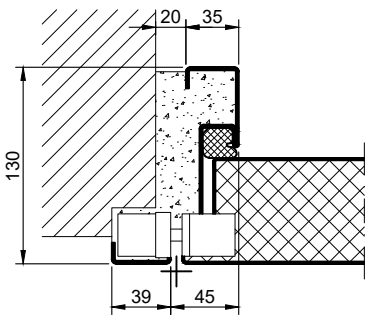


construction hinges



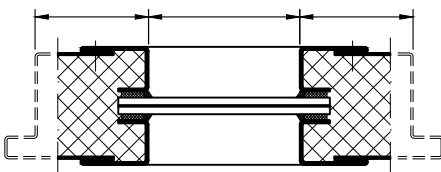
SUPERIOR Version

concealed hinges

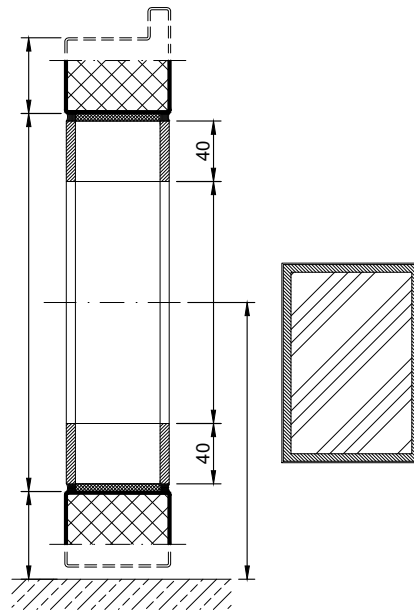
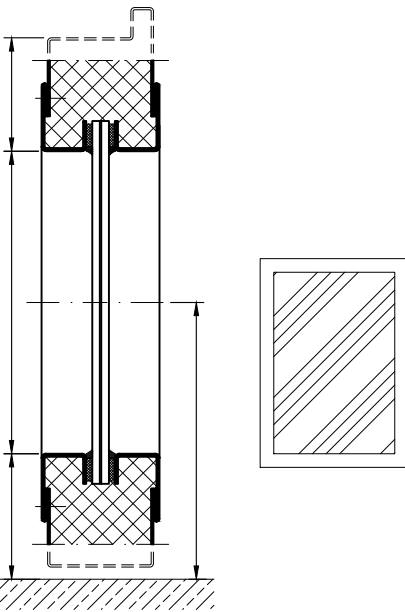
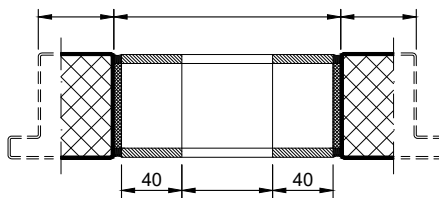


Options

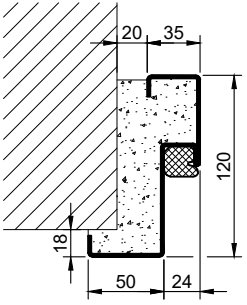
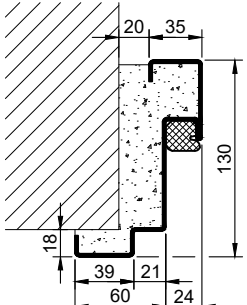
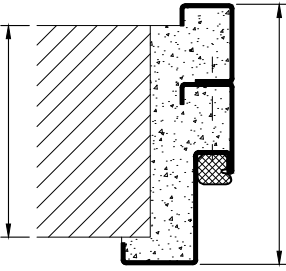
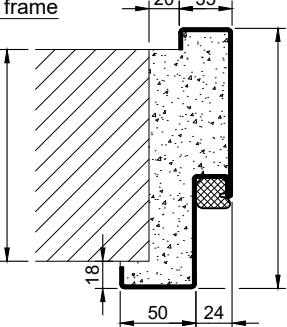
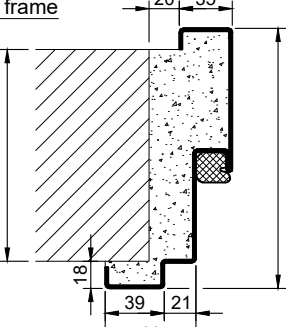
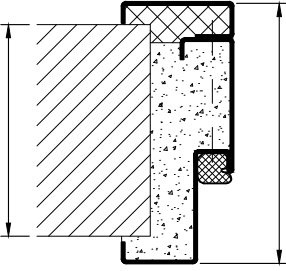
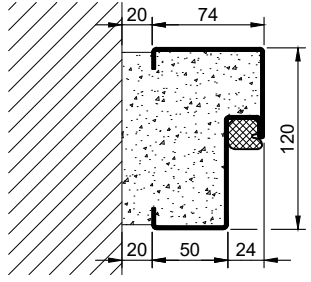

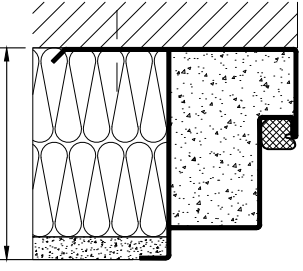
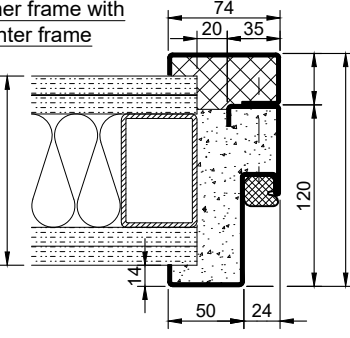
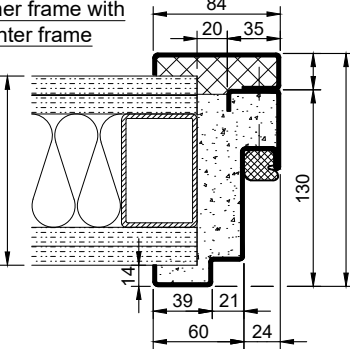
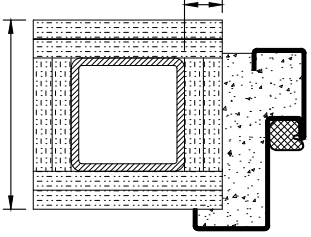
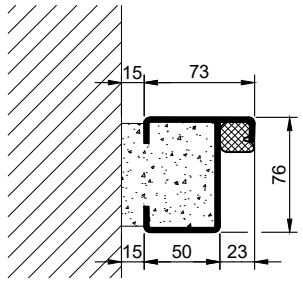
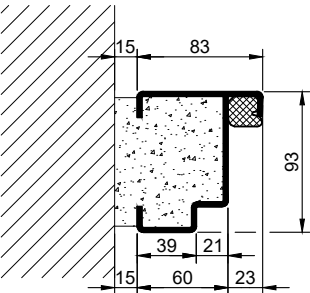
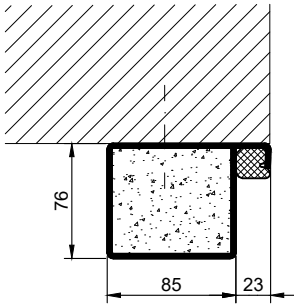
glazing



flush glazing



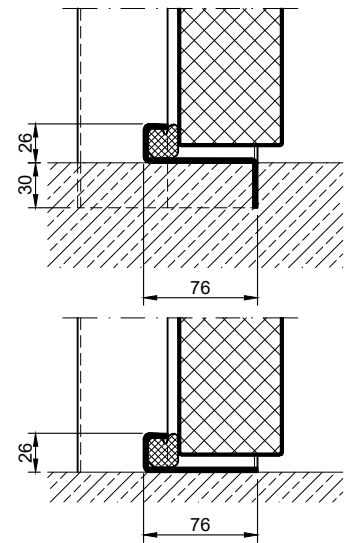
5.1.2. PLANE LINE PL 1 RN_EN

Frames BASIC	Frames PREMIUM / SUPERIOR	Variants (illustration BASIC)
<p>corner frame</p> 	<p>corner frame</p> 	<p>corner frame with additional frame</p> 
<p>encasing frame</p> 	<p>encasing frame</p> 	<p>encasing frame with counter frame</p> 
<p>block frame</p> 	<p>block frame</p> 	<p>juted block frame</p> 
<p>corner frame with counter frame</p> 	<p>corner frame with counter frame</p> 	<p>corner frame at support / pillar</p> 
<p>profile block frame</p> 	<p>profile block frame</p> 	<p>pre-wall frame</p> 

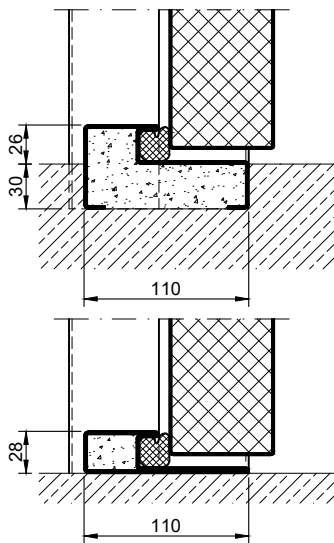
5.1.2. PLANE LINE PL 1 RN_EN

Thresholds

stop sill with seal



stop sill with seal



full sill

