

### Single Leaf PLANE Line Radiation Protection Door

**Lead Equivalent**                      **up to 4 mm**                      **acc. to EN 6834-1**

#### Optional Audited Additional Functions

|                              |                                    |                                      |
|------------------------------|------------------------------------|--------------------------------------|
| - Fire Protection            | <b>EI<sub>230/60/90</sub>-SaC5</b> | tested acc. to EN 1634-1             |
| - Smoke Control              | <b>RS (S<sub>200</sub>)</b>        | tested acc. to EN 1634-3             |
| - Burglar Protection         | <b>RC2/RC3/RC4/RC5</b>             | tested acc. to EN 1627               |
| - Sound Insulation           | <b>up to R<sub>w,P</sub> 54dB</b>  | tested acc. to EN ISO 10140-2        |
| - Bullet Resistance          | <b>FB4/FB6-NS</b>                  | tested acc. to EN 1522               |
| - Air Tight                  | <b>up to class 4</b>               | tested acc. to EN 1026               |
| - Rain- and Fire-Water Tight | <b>class 6A</b>                    | tested acc. to EN 1027               |
| - Wind load Resistance       | <b>up to class C5</b>              | tested acc. to EN 12211              |
| - Blast Resistance           | <b>up to 20 kPa</b>                | tested acc. to EN 13124-1            |
| - Explosion Protection       | <b>up to zone 1/21</b>             | acc. to EN 1127-1 or ATEX 2014/34/EU |
| - Stainless Steel            |                                    |                                      |

#### Range of Dimension

**Width** from 500 mm to 1500 mm  
**Height** from 500 mm to 3000 mm

#### Technical Specification and Tender Text

|                            |  |
|----------------------------|--|
| <b>Product:</b>            | <b>PL1 single leaf radiation protection door brand Buchele</b>   |
| <b>Door Type:</b>          | <b>PLANE Line PL 1 BASIC</b>   |
| <b>Lead Equivalent:</b>    | <b>... mm</b>  |
| <b>Structural Opening:</b> | <b>.... x .... mm</b>  |
| <b>Door Leaf:</b>          | Double-walled, planar 70 mm thick steel door leaf without hinge embossing, three sides rebated with thick rebate.<br>Without bottom stop.<br>Special insulating inserts fully laid-in and glued.<br>Securing pin screwed in door leaf rebate.  |
| <b>Threshold:</b>          | Floor bracket as separation sill. Surface galvanized and welded to the frame.  |
| <b>Frame:</b>              | 3-sided circumferential rebated corner frame<br>High-quality multi chamber sealing profile adjustable fixed in the three-sided groove.   |
| <b>Hinges:</b>             | Three-part, height adjustable construction hinges with hinge pin retention and ball bearing spacer ring for smooth door movement.  |
| <b>Fitting:</b>            | Mortise lock with latch lever function acc. to EN 12209 (prepared for installation of a profile cylinder lock, provided by customer)<br>From lead equivalent 2,0 mm radiation protection lock with offset cylinder and offset handle punches.<br>Door handle set in acc. to EN 1906 fixed pivoted, black plastic, in U-shape with rounded short-plate. |

**Surface:** Door leaf and frame galvanized und primed with 2K-PUR primer (Very High Solid) similar RAL 7035.

**Alternative:** PLANE Line PL 1 PREMIUM with flush mounted optics

**Frame:** 3-sided circumferential rebated PLANE Line special corner frame for flush mounted optics on hinge side.  
High-quality multi-chamber sealing profile adjustable fixed in the three-sided groove.

**Hinges:** Object hinges type VB-3D 160 adjustable in three dimensions.  
Fixture element with slide bearings inside for smooth door movement.

**Alternative:** PLANE Line PL 1 SUPERIOR with flush mounted optics

**Frame:** 3-sided circumferential rebated PLANE Line special corner frame for flush mounted optics on hinge side.  
High-quality multi-chamber sealing profile adjustable fixed in the three-sided groove.

**Hinges:** Concealed hinge system adjustable in three dimensions.

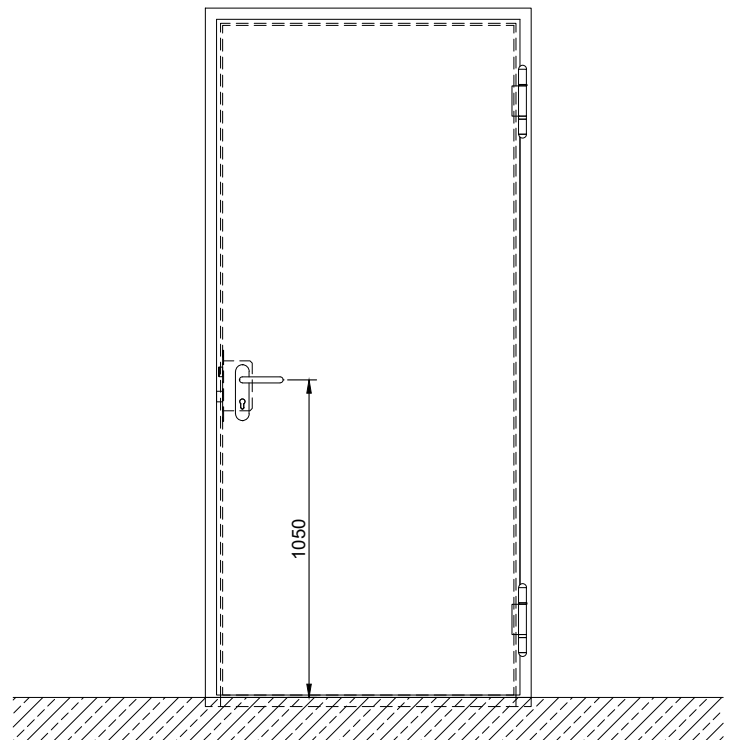
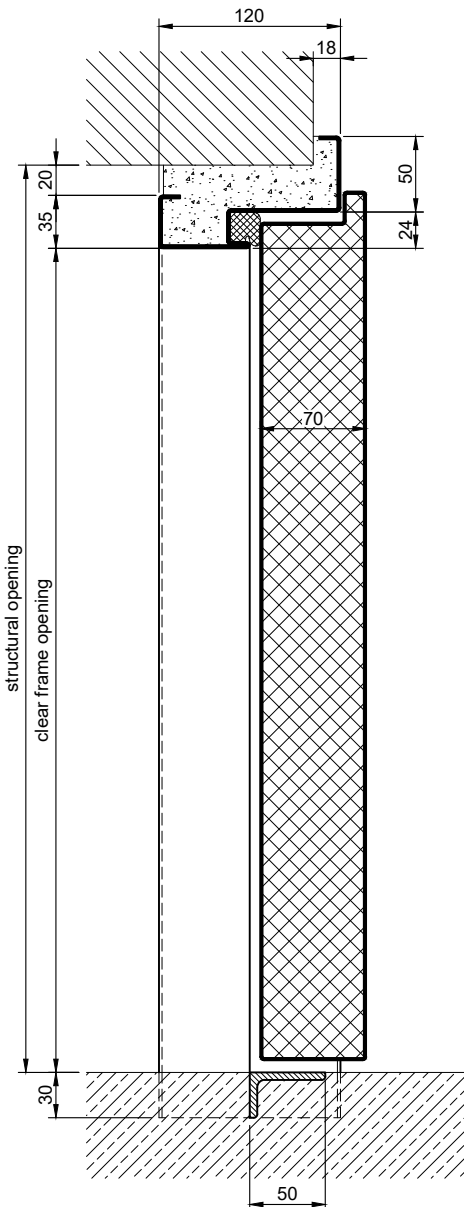
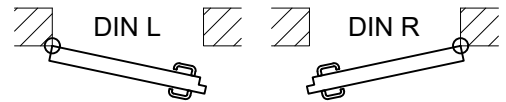
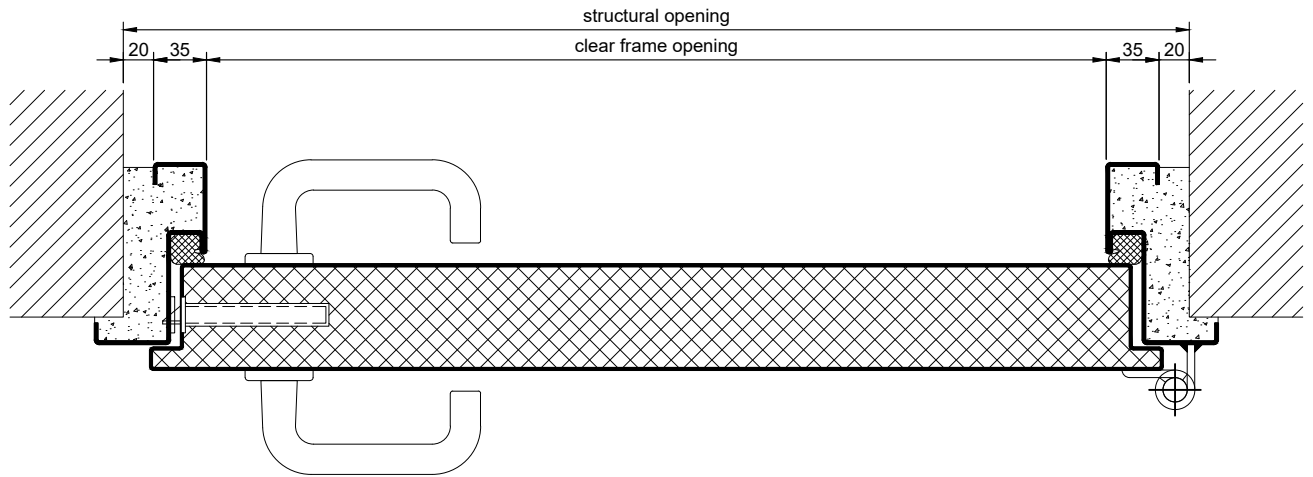
### Supplementary Equipment

**Standard Glazing:** Radiation shielding glazing fixed with visible screwed profiled glazing bars.  
Minimum border 125 mm on side and top, base 300 mm.

**Glazing with privacy screen:** Radiation shielding glazing with integrated electrical blind, fixed with profiled und visible screwed glazing bars.  
Minimum border 125 mm on side and top, base 300 mm.

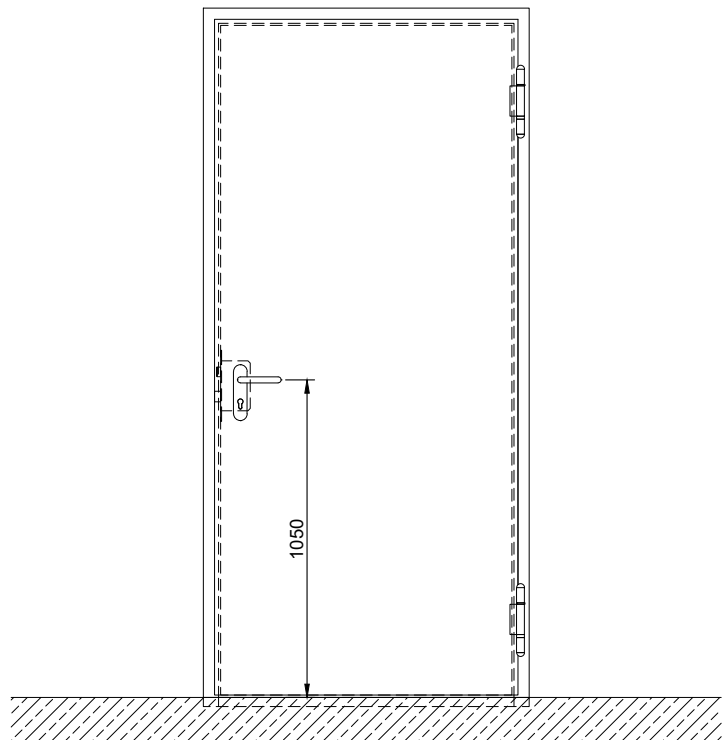
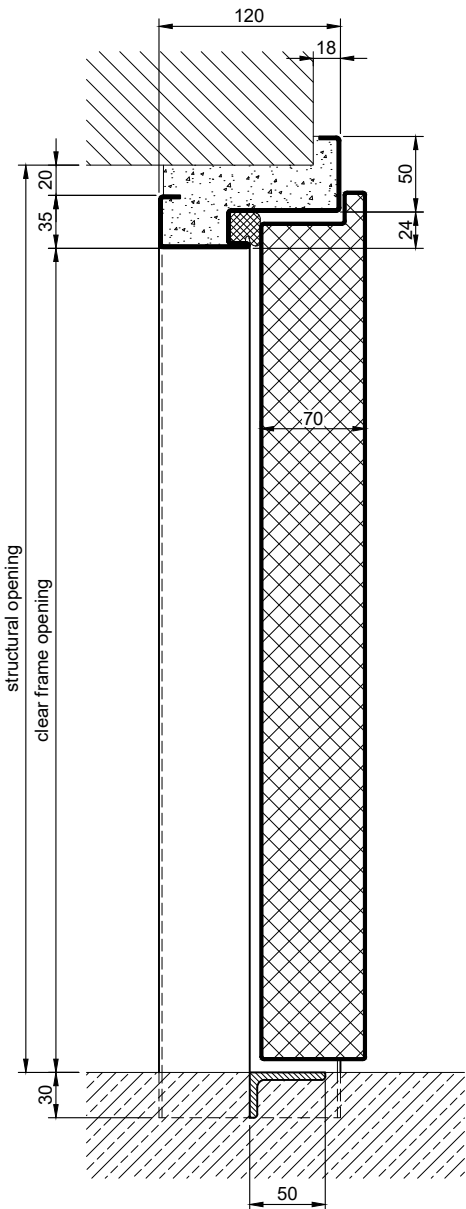
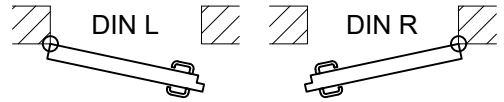
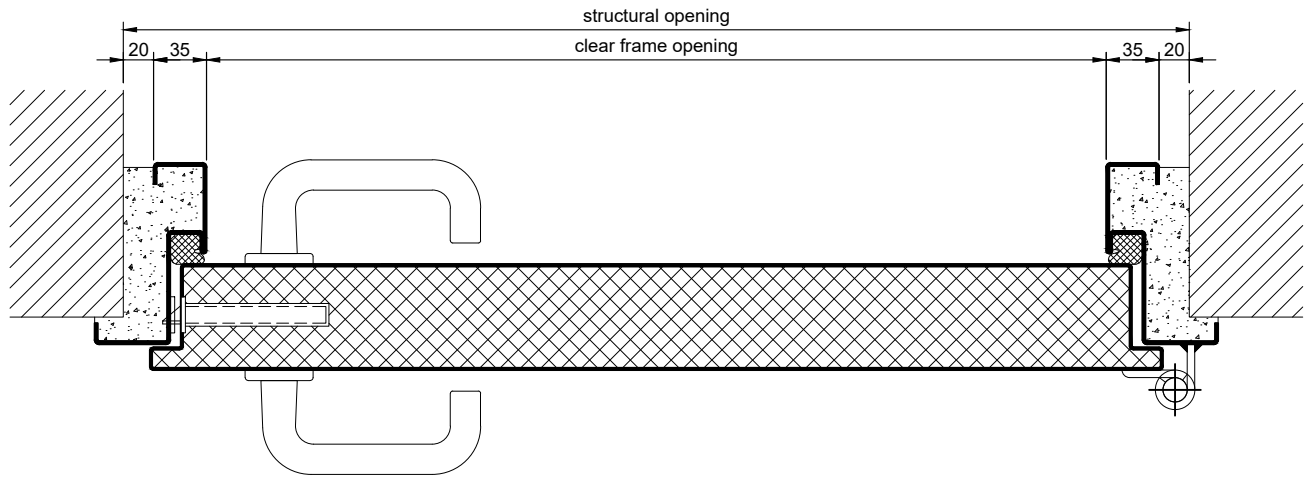
**Stainless Steel:** Material 1.4301 (V2A) or 1.4404 (V4A),  
Surface mill finish or brushed.

### BASIC Version



5.1.1\_PLANE LINE PL 1 RD\_EN

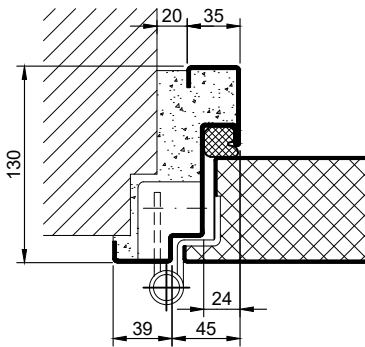
### BASIC Version



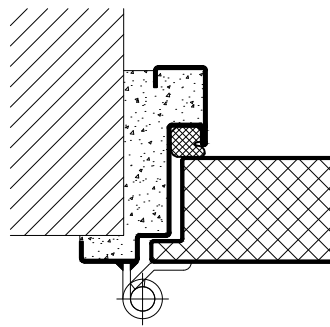
5.1.1\_PLANE LINE PL 1 RD\_EN

PREMIUM Version

object hinges VB-3D

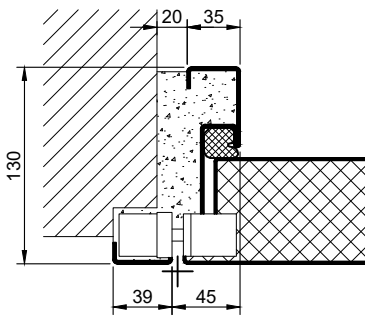


construction hinges



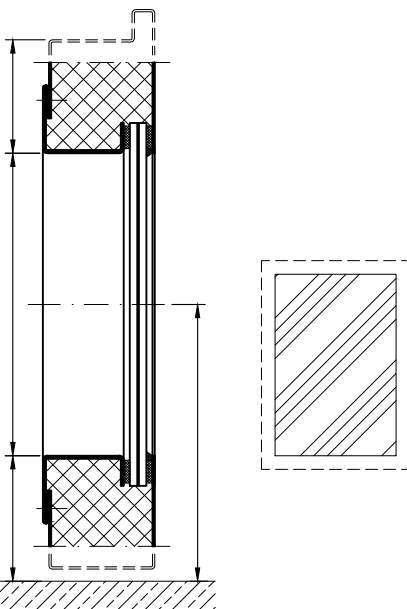
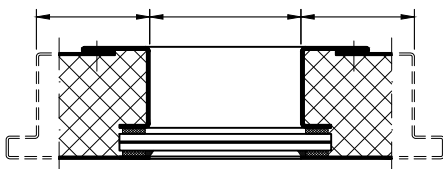
SUPERIOR Version

concealed hinges



Options

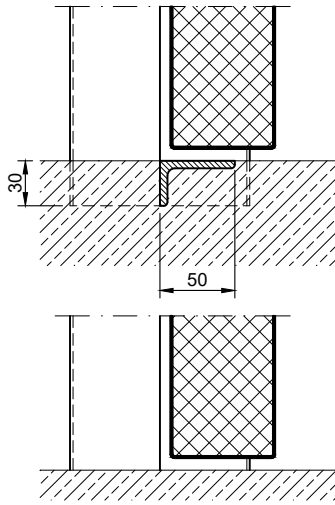
glazing



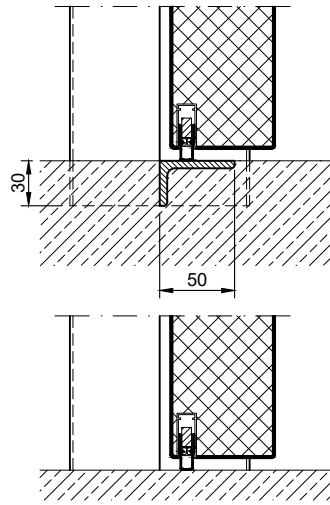
5.1.1\_PLANE LINE PL 1 RD\_EN

### Thresholds

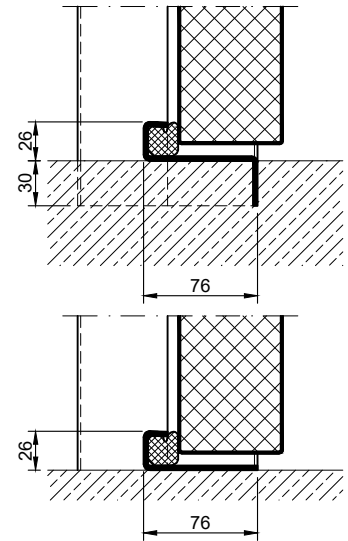
separation sill



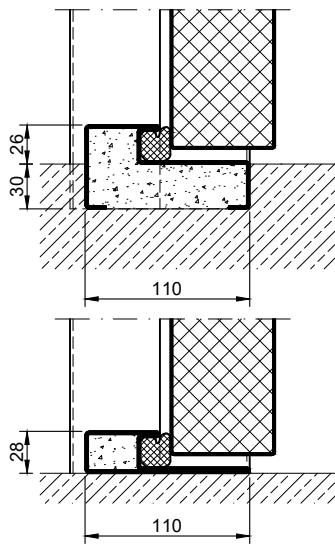
drop seal



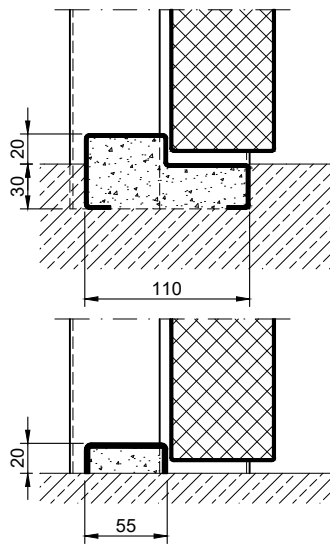
stop sill with seal



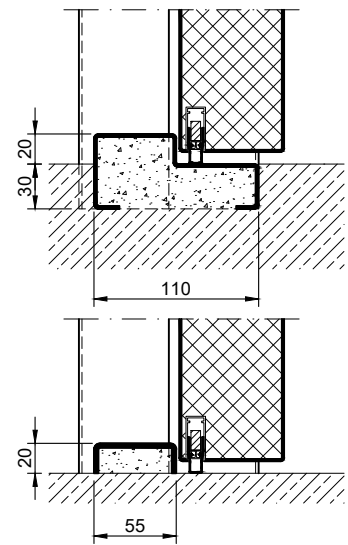
stop sill with seal



stop sill without seal



stop sill with drop seal



full sill

