

Double Leaf PLANE Line Radiation Protection Door

Lead Equivalent **up to 4 mm** **acc. to EN 6834-1**

Optional Audited Additional Functions

- Fire Protection	EI_{230/60/90}-SaC5	tested acc. to EN 1634-1
- Smoke Control	RS (S₂₀₀)	tested acc. to EN 1634-3
- Burglar Protection	RC2/RC3/RC4/RC5	tested acc. to EN 1627
- Sound Insulation	up to R_{w,P} 54dB	tested acc. to EN ISO 10140-2
- Bullet Resistance	FB4/FB6-NS	tested acc. to EN 1522
- Air Tight	up to class 4	tested acc. to EN 1026
- Rain- and Fire-Water Tight	class 6A	tested acc. to EN 1027
- Wind load Resistance	up to class C5	tested acc. to EN 12211
- Blast Resistance	up to 20 kPa	tested acc. to EN 13124-1
- Explosion Protection	up to zone 1/21	acc. to EN 1127-1 or ATEX 2014/34/EU
- Stainless Steel		

Range of Dimension

Width from 1375 mm to 3000 mm
Height from 1750 mm to 3000 mm

Technical Specification and Tender Text

Product:	PL2 double leaf radiation protection door brand Buchele
Door Type:	PLANE Line PL 2 BASIC
Lead Equivalent:	... mm
Structural Opening: x mm
Door Leaf:	Double-walled, planar 70 mm thick steel door leaf without hinge embossing, three sides rebated. Without bottom stop. Special insulating inserts fully laid-in and glued. Securing pin screwed in door leaf rebate. Passive leaf with multi-chamber sealing profile in the middle rebate.
Threshold:	Floor bracket as separation sill. Surface galvanized and welded to the frame.
Frame:	3-sided circumferential rebated corner frame with high-quality multi chamber sealing profile adjustable fixed in the three-sided groove.
Hinges:	Three-part, height adjustable construction hinges with hinge pin retention and ball bearing spacer ring for smooth door movement.
Fitting:	Active leaf: mortise lock with latch lever function acc. to EN 12209 (prepared for installation of a profile cylinder lock, provided by customer) From lead equivalent 2,0 mm radiation protection lock with offset cylinder and offset handle punches. Door handle set in acc. to EN 1906 fixed pivoted, black plastic, in U-shape with rounded short-plate. Passive leaf with concealed shoot-bolt lock.

Surface: Door leaf and frame galvanized und primed with 2K-PUR primer (Very High Solid) similar RAL 7035.

Alternative: PLANE Line PL 2 PREMIUM with flush mounted optics

Frame: 3-sided circumferential rebated PLANE Line special corner frame for flush mounted optics on hinge side.
High-quality multi-chamber sealing profile adjustable fixed in the three-sided groove.

Hinges: Object hinges type VB-3D 160 adjustable in three dimensions.
Fixture element with slide bearings inside for smooth door movement.

Alternative: PLANE Line PL 2 SUPERIOR with flush mounted optics

Frame: 3-sided circumferential rebated PLANE Line special corner frame for flush mounted optics on hinge side.
High-quality multi-chamber sealing profile adjustable fixed in the three-sided groove.

Hinges: Concealed hinge system adjustable in three dimensions.

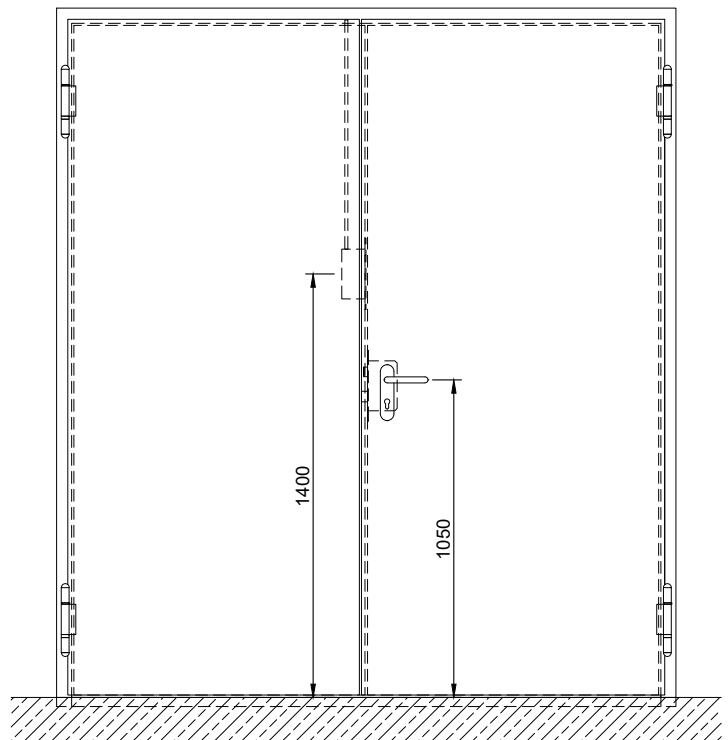
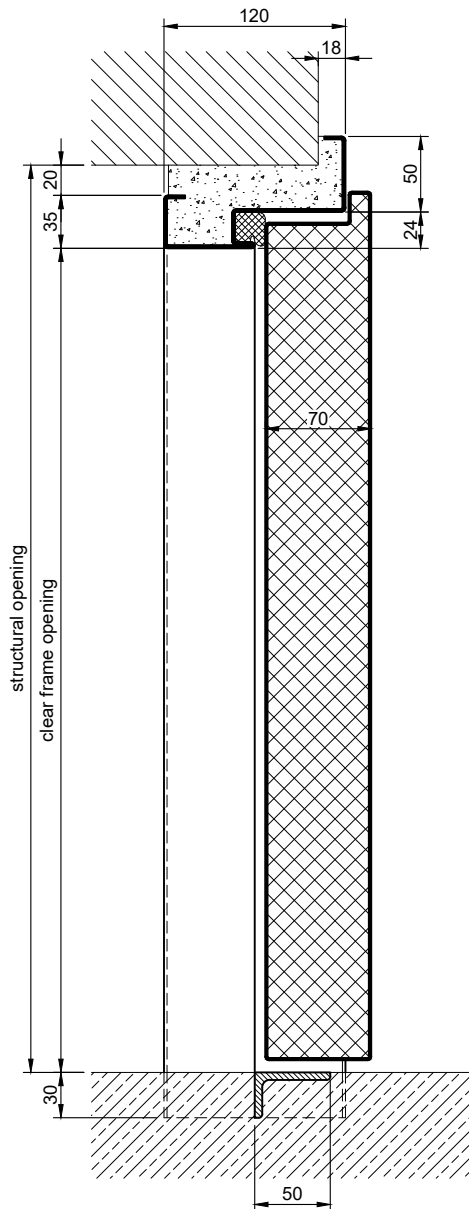
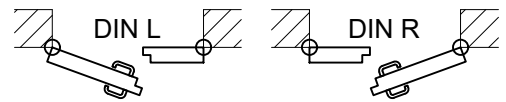
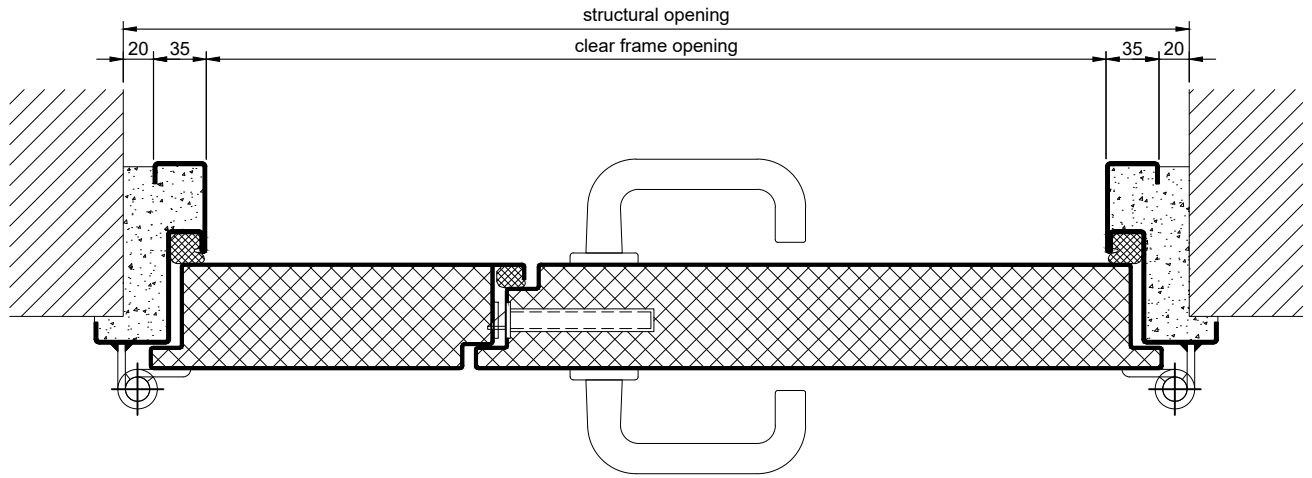
Supplementary Equipment

Standard Glazing: Radiation shielding glazing fixed with visible screwed profiled glazing bars.
Minimum border 125 mm on side and top, base 300 mm.

Glazing with privacy screen: Radiation shielding glazing with integrated electrical blind, fixed with profiled und visible screwed glazing bars.
Minimum border 125 mm on side and top, base 300 mm.

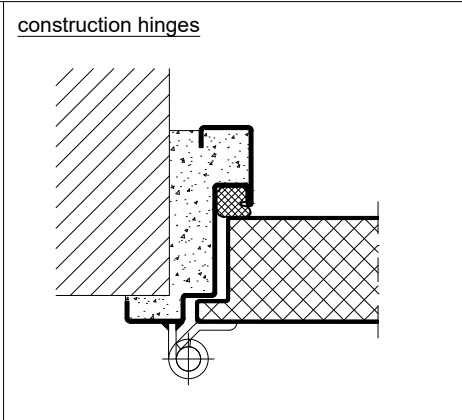
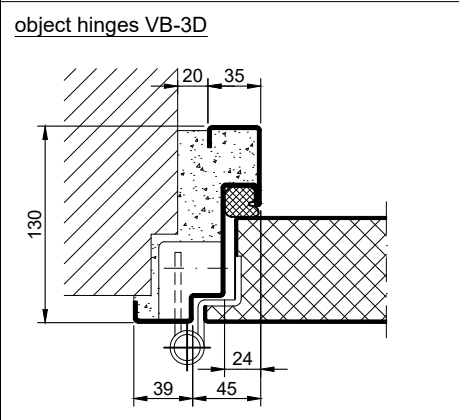
Stainless Steel: Material 1.4301 (V2A) or 1.4404 (V4A),
Surface mill finish or brushed.

BASIC - Ausführung

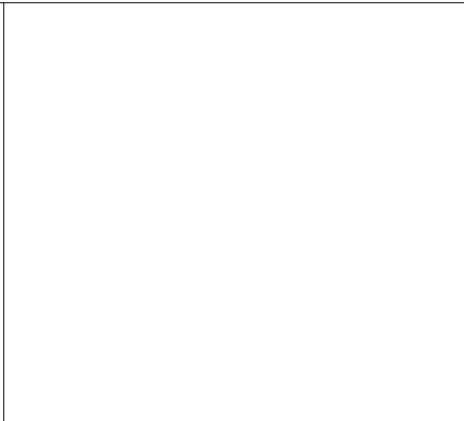
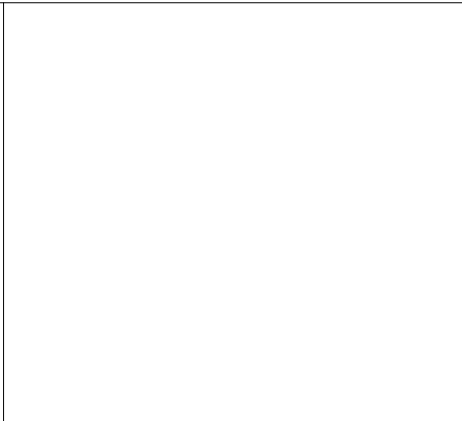
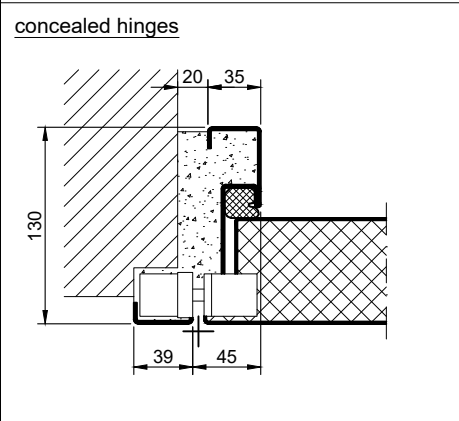


5.11.1_PLANE LINE PL 2 RD_EN

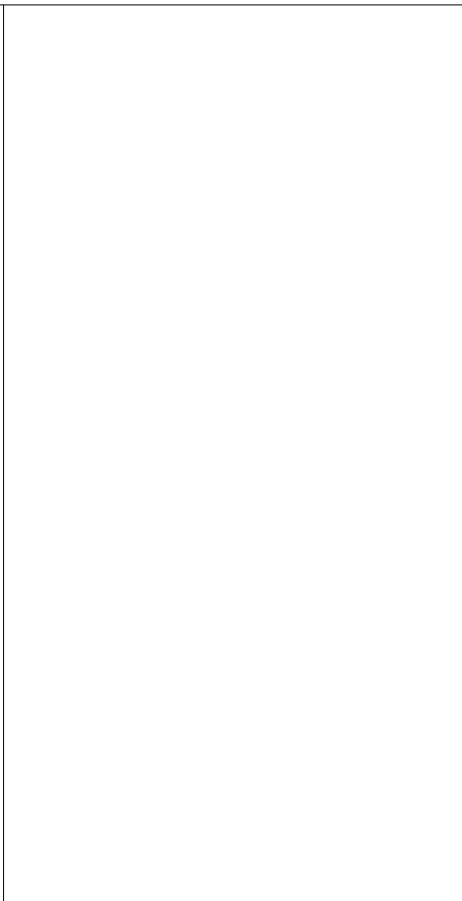
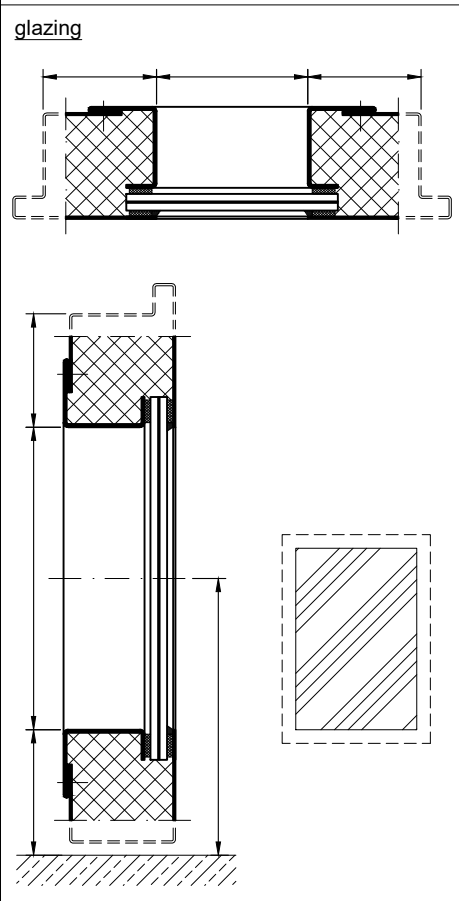
PREMIUM Version



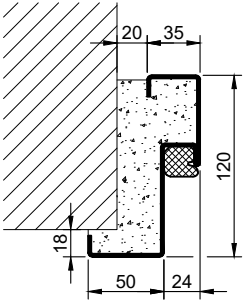
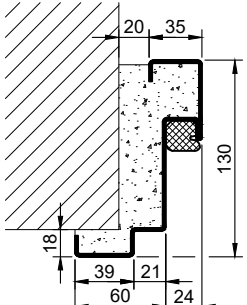
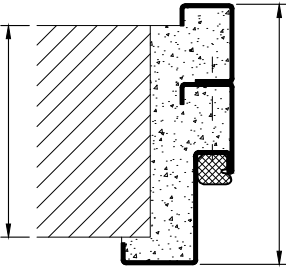
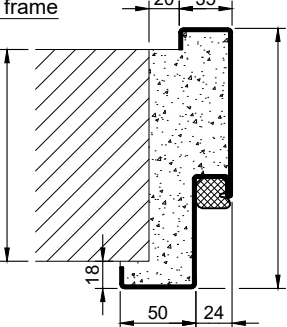
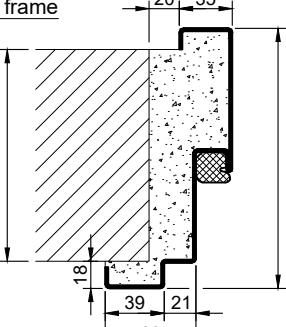
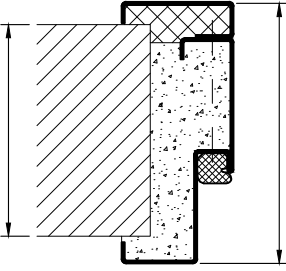
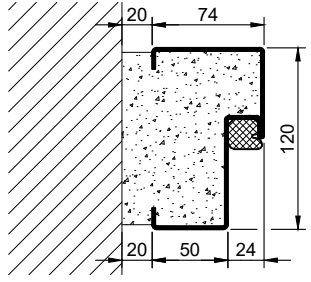

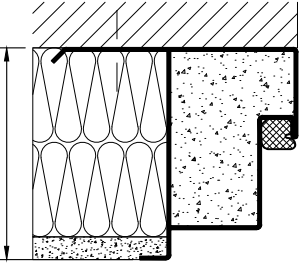
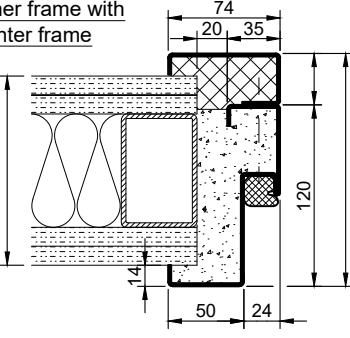
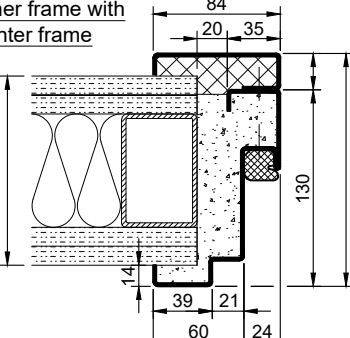
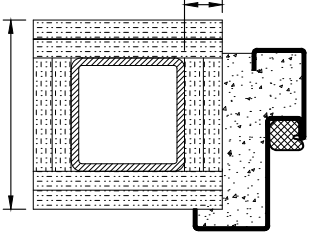
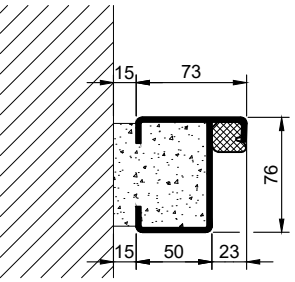
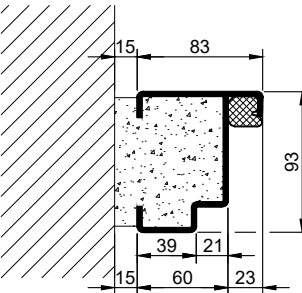
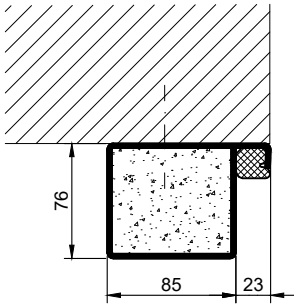
SUPERIOR Version



Options



5.11.1_PLANE LINE PL 2 RD_EN

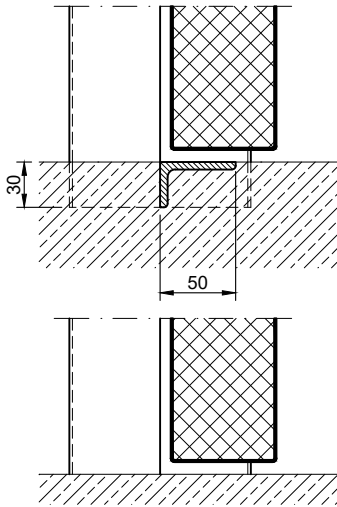
Frames BASIC	Frames PREMIUM / SUPERIOR	Variants (illustration BASIC)
<p>corner frame</p> 	<p>corner frame</p> 	<p>corner frame with additional frame</p> 
<p>encasing frame</p> 	<p>encasing frame</p> 	<p>encasing frame with counter frame</p> 
<p>block frame</p> 	<p>block frame</p> 	<p>juted block frame</p> 
<p>corner frame with counter frame</p> 	<p>corner frame with counter frame</p> 	<p>corner frame at support / pillar</p> 
<p>profile block frame</p> 	<p>profile block frame</p> 	<p>pre-wall frame</p> 

5.1.1.1. PLANE LINE PL 2 RD_EN

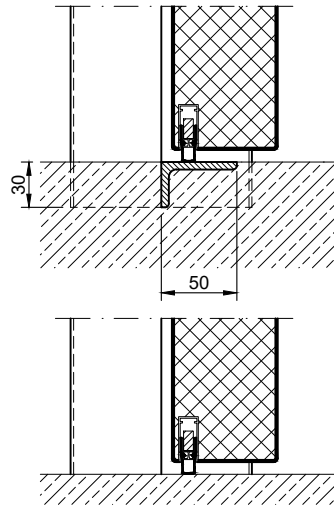
technical modifications reserved - edition 07/2024

Thresholds

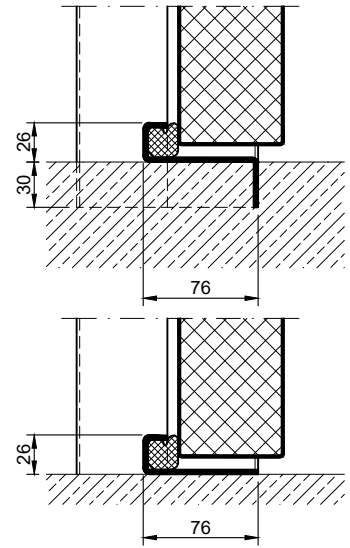
separation sill



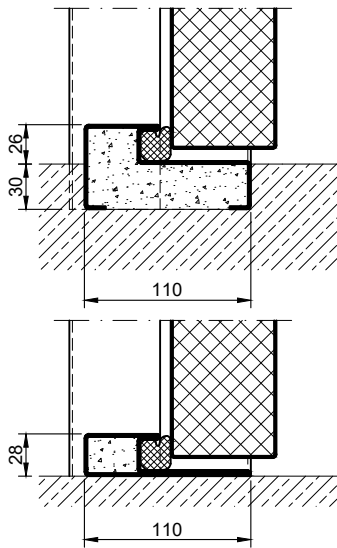
drop seal



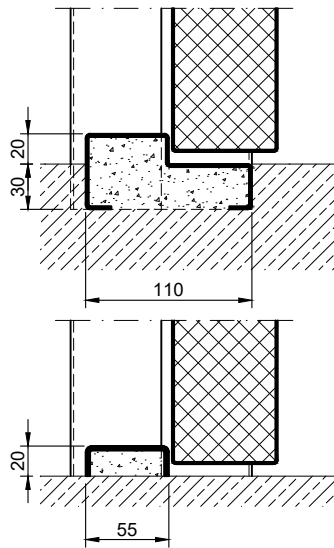
stop sill with seal



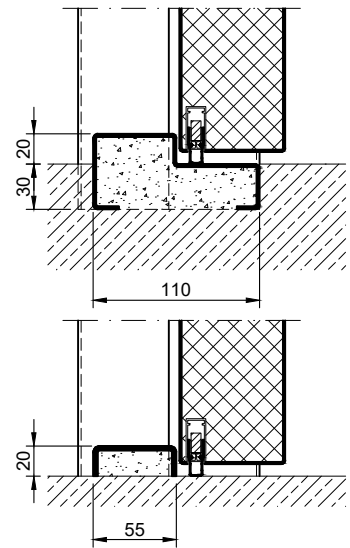
stop sill with seal



stop sill without seal



stop sill with drop seal



full sill

