

Single Leaf Impact 1 Explosion Resistant Door

Blast Resistance	EPR 1 0,5 bar	tested acc. to EN 13124-1 with increased impulse up to 350 bar • ms
and/or		
Explosion Protection	up to Zone1/21	acc. to EN 1127-1 / ATEX 2014/34/EU

Optional Audited Additional Functions

- Burglar Protection	RC2/RC3/RC4/RC5	tested acc. to EN 1627
- Bullet Resistance	FB4/FB6/FB7	tested acc. to EN 1522
- Air Tight	up to class 4	tested acc. to EN 1026
- Rain- and Fire-Water Tight	class 6A	tested acc. to EN 1027
- Wind load Resistance	up to class C5	tested acc. to EN 1221
- Stainless Steel		

Range of Dimension

Width from 500 mm to 1500 mm
Height from 500 mm to 3000 mm

Technical Specification and Tender Text

Product:	Single leaf explosion resistant door brand Buchele tested acc. to EN 13124-1
Door Type:	Impact 1
Explosion Resistance:	0,5 kPa / 50kPa
Blast Resistance:	EPR 1 acc. to EN 13124-1
Explosion Protection:	Zone 1 (IIA, IIB) / Zone 2 (IIA, IIB) / Zone 21 / Zone 22 acc. to EN 1127-1 or ATEX 94/9/EG
Structural Opening: x mm
Door Leaf:	Double-walled, planar 84 mm thick steel door leaf without hinge embossing, three sides rebated with thick rebate. Without bottom stop. Special insulating inserts fully laid-in and glued. Securing pin screwed in door leaf rebate.
Threshold:	Floor bracket as separation sill. Surface galvanized and welded to the frame.
Frame:	3-sided circumferential rebated corner frame. High-quality multi chamber sealing profile adjustable fixed in the three-sided groove.
Hinges:	Three-part, height adjustable construction hinges with hinge pin retention and ball bearing spacer ring for smooth door movement.
Fitting:	Mortise lock with latch lever function acc. to EN 12209 (prepared for

installation of a profile cylinder lock, provided by customer) and attached, automatic 2-point locking system.
Door handle set in acc. to EN 1906 fixed pivoted synthetic material black in U-shape with rounded short-plate.

Surface:

Door leaf and frame galvanized und primed with 2K-PUR primer (Very High Solid) similar RAL 7035.

Supplementary Equipment

Glazing:

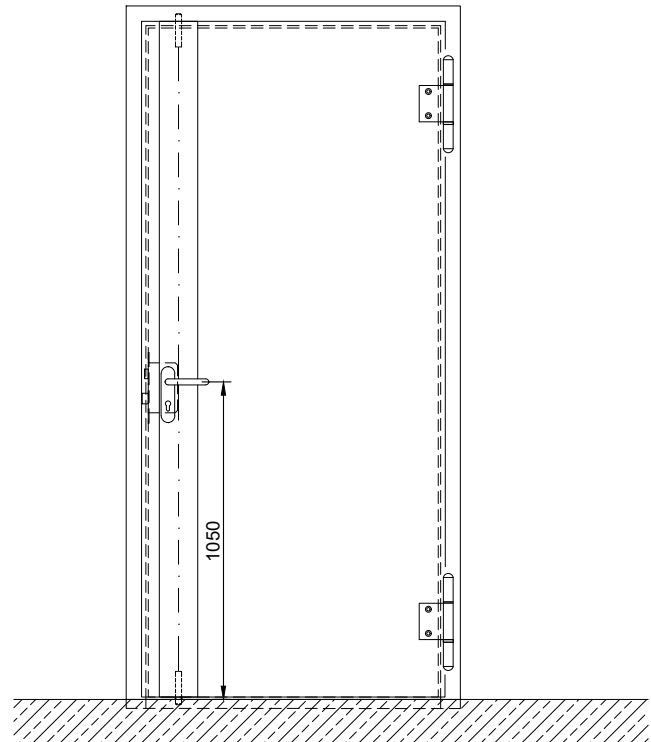
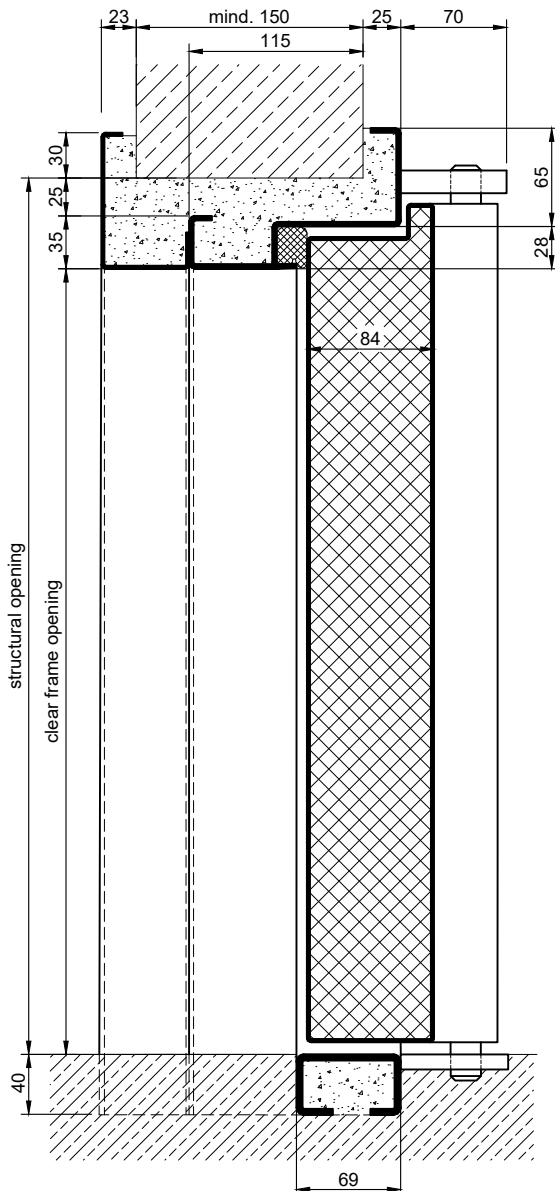
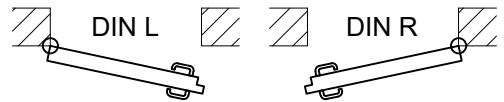
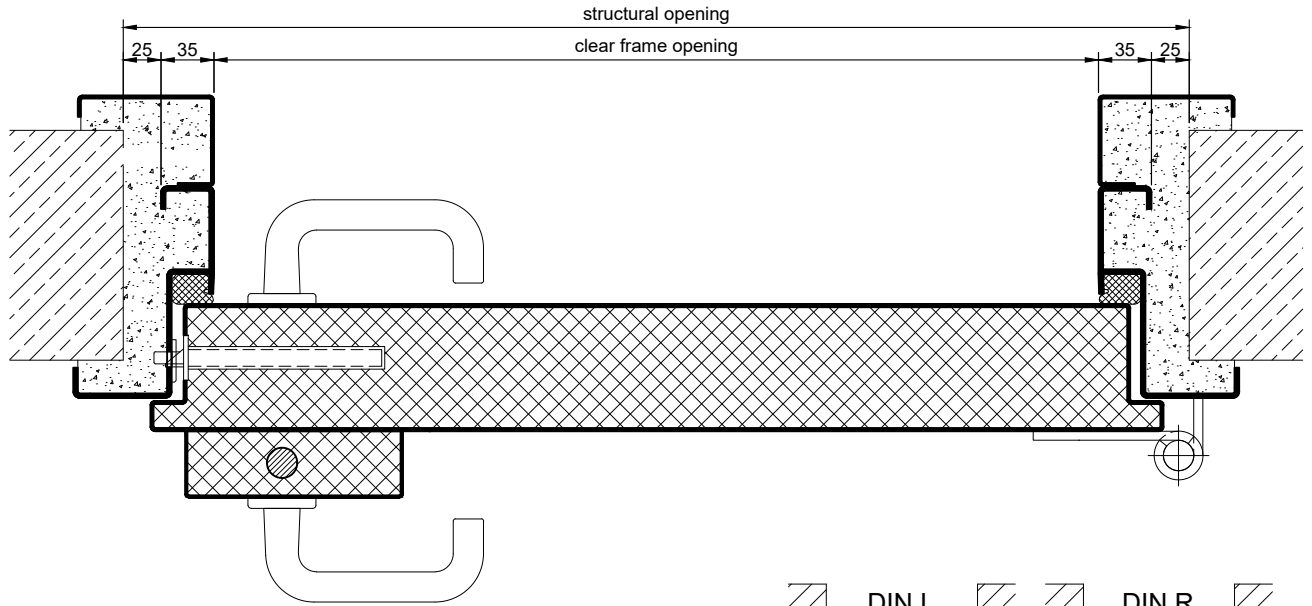
Non-splintering single or insulating glazing fixed with profiled and visible screwed steel glazing bars.
Minimum border 125 mm on side and top, base 300 mm.

Pressure Relief Hatch:

Self-closing hatch for explosion pressure relief in the door leaf.
Inside optionally secured with protective grille.

Stainless Steel:

Material 1.4301 (V2A) or 1.4404 (V4A),
Surface mill finish or brushed.

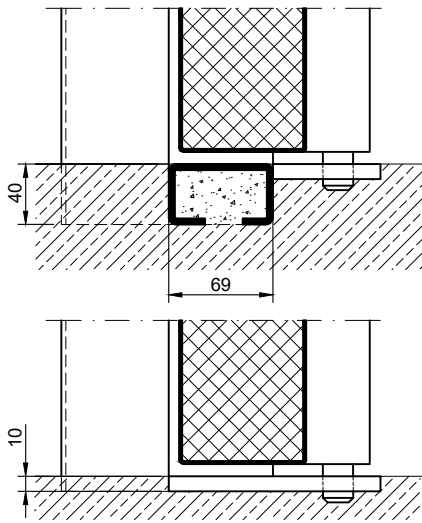


4.1.1. IMPACT 1-0,5BAR_EN

technische Änderungen vorbehalten - Stand 07/2024

Thresholds

separation sill



Options

glazing

