

## Double Leaf Impact 2 Explosion Resistant Door

<b>Blast Resistance</b>	<b>EPR 1 0,5 bar</b>	<b>tested acc. to EN 13124-1 with increased impulse up to 350 bar • ms</b>
and/or		
<b>Explosion Protection</b>	<b>up to Zone1/21</b>	<b>acc. to EN 1127-1 / ATEX 2014/34/EU</b>

### Optional Audited Additional Functions

- Burglar Protection	<b>RC2/RC3/RC4/RC5</b>	tested acc. to EN 1627
- Bullet Resistance	<b>FB4/FB6/FB7</b>	tested acc. to EN 1522
- Air Tight	<b>up to class 4</b>	tested acc. to EN 1026
- Rain- and Fire-Water Tight	<b>class 6A</b>	tested acc. to EN 1027
- Wind load Resistance	<b>up to class C5</b>	tested acc. to EN 1221
- Stainless Steel		

### Range of Dimension

**Width** from 1375 mm to 2500 mm  
**Height** from 1750 mm to 2500 mm

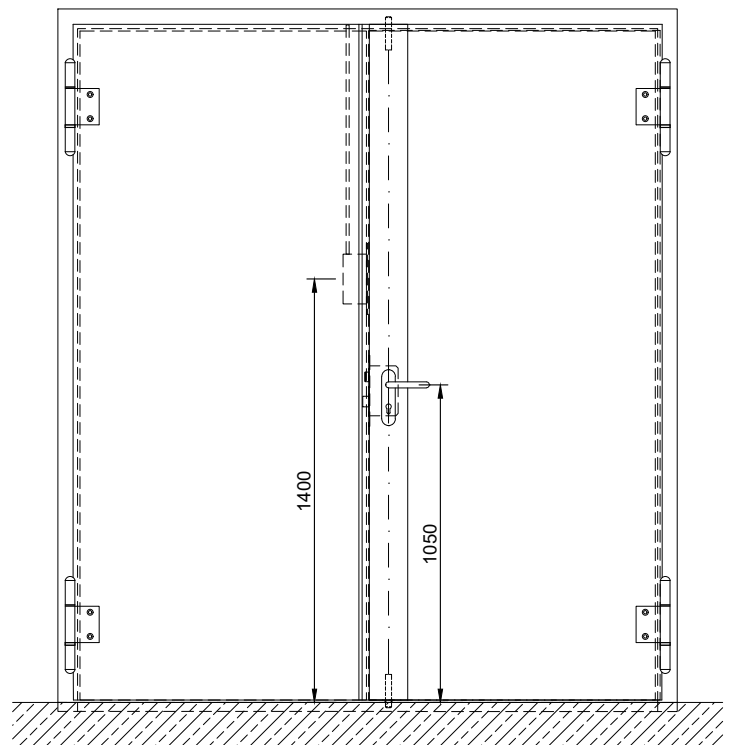
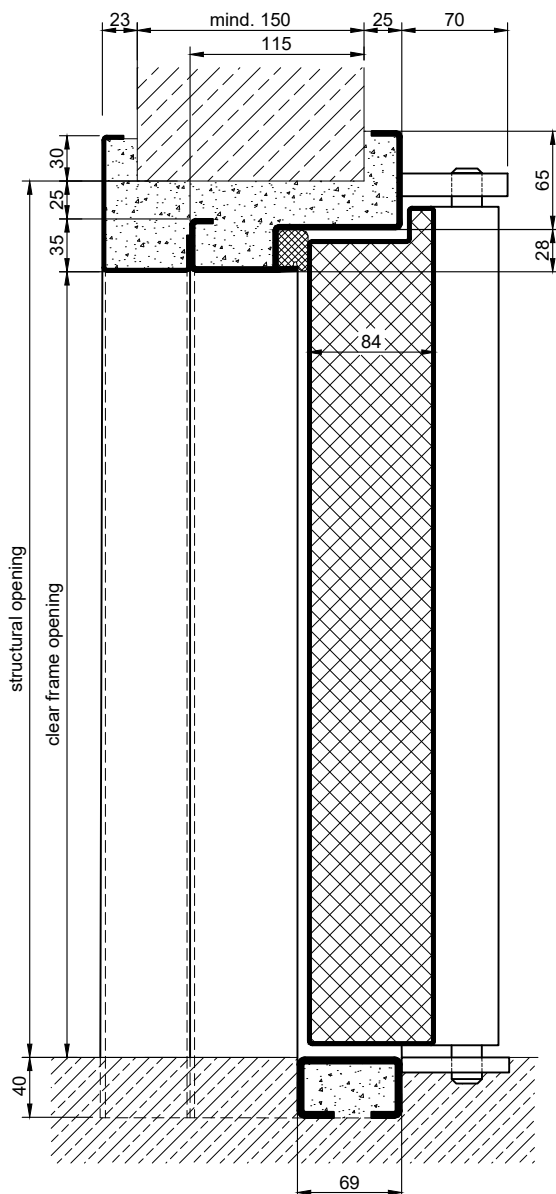
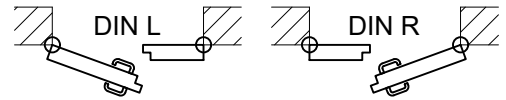
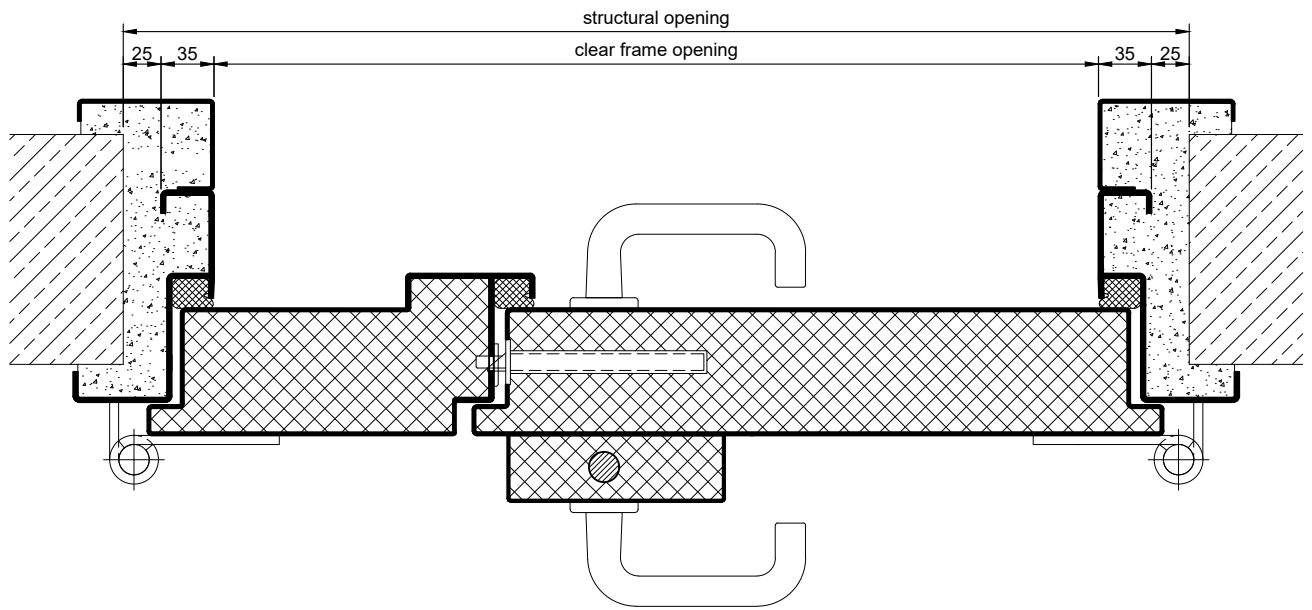
### Technical Specification and Tender Text

<b>Product:</b>	<b>Double leaf explosion resistant door brand Buchele tested acc. to EN 13124-1</b>
<b>Door Type:</b>	<b>Impact 2</b>
<b>Explosion Resistance:</b>	<b>0,5 kPa / 50kPa</b>
<b>Blast Resistance:</b>	<b>EPR 1 acc. to EN 13124-1</b>
<b>Explosion Protection:</b>	<b>Zone 1 (IIA, IIB) / Zone 2 (IIA, IIB) / Zone 21 / Zone 22 acc. to EN 1127-1 or ATEX 94/9/EG</b>
<b>Structural Opening:</b>	<b>.... x .... mm</b>
<b>Door Leaf:</b>	Double-walled, planar 84 mm thick steel door leaf without hinge embossing, three sides rebated with thick rebate. Without bottom stop. Special insulating inserts fully laid-in and glued. Securing pin screwed in door leaf rebate. Passive leaf with multi-chamber sealing profile in the middle rebate.
<b>Threshold:</b>	Floor bracket as separation sill. Surface galvanized and welded to the frame.
<b>Frame:</b>	3-sided circumferential rebated corner frame. High-quality multi chamber sealing profile adjustable fixed in the three-sided groove.
<b>Hinges:</b>	Three-part, height adjustable construction hinges with hinge pin retention and ball bearing spacer ring for smooth door movement.

<b>Fitting:</b>	<b>Active leaf:</b> mortise lock with latch lever function acc. to EN 12209 (prepared for installation of a profile cylinder lock, provided by customer) and attached, automatic 2-point locking system. Door handle set in acc. to EN 1906 fixed pivoted synthetic material black in U-shape with rounded short-plate. <b>Passive leaf</b> with concealed shoot bolt lock.
<b>Surface:</b>	Door leaf and frame galvanized und primed with 2K-PUR primer (Very High Solid) similar RAL 7035.

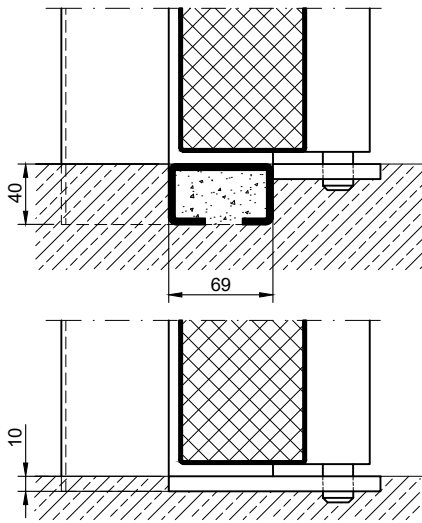
### Supplementary Equipment

<b>Glazing:</b>	Non-splintering single or insulating glazing fixed with profiled and visible screwed steel glazing bars. Minimum border 125 mm on side and top, base 300 mm.
<b>Pressure Relief Hatch:</b>	Self-closing hatch for explosion pressure relief in the door leaf. Inside optionally secured with protective grille.
<b>Stainless Steel:</b>	Material 1.4301 (V2A) or 1.4404 (V4A), Surface mill finish or brushed.



## Thresholds

separation sill



## Options

glazing

