

Double Leaf PLANE Line Explosion Resistant Door

Explosion Resistance **15 kPa** **tested acc. to EN 13124-1**

Optional Audited Additional Functions

- Burglar Protection	RC2/RC3/RC4/RC5	tested acc. to EN 1627
- Sound Insulation	up to R_{w,P} 54 dB	tested acc. to EN ISO 10140-2
- Bullet Resistance	FB4/FB6-NS	tested acc. to EN 1522
- Air Tight	up to class 4	tested acc. to EN 1026
- Rain- and Fire-Water Tight	class 6A	tested acc. to EN 1027
- Wind load Resistance	up to class C5	tested acc. to EN 1221
- Explosion Resistance	up to Zone1/21	acc. to EN 1127-1 / ATEX 2014/34/EU
- Stainless Steel		

Range of Dimension

Width from 500 mm to 2500 mm
Height from 500 mm to 2500 mm

Technical Specification and Tender Text

Product:	PL 2 double leaf explosion resistant door brand Buchele tested acc. to EN 13124-1
Door Type:	PLANE Line PL 2 BASIC
Explosion Resistance:	15 kPa
Structural Opening: x mm
Door Leaf:	Double-walled, planar 70 mm thick steel door leaf without hinge embossing, three sides rebated with thick rebate. Without bottom stop. Special insulating inserts fully laid-in and glued. Securing pin screwed in door leaf rebate. Passive leaf with multi-chamber sealing profile in the middle rebate.
Threshold:	Floor bracket as separation sill. Surface galvanized and welded to the frame.
Frame:	3-sided circumferential rebated corner frame. High-quality multi chamber sealing profile adjustable fixed in the three-sided groove.
Hinges:	Three-part, height adjustable construction hinges with hinge pin retention and ball bearing spacer ring for smooth door movement.
Fitting:	Active leaf: self-locking 4-point security mortise lock with latch lever function acc. to EN 12209 (prepared for installation of a profile cylinder lock, provided by customer). Door handle set in acc. to EN 1906 fixed pivoted synthetic material black in U-shape with rounded short-plate. Passive leaf with concealed shoot bolt lock.
Surface:	Door leaf and frame galvanized und primed with 2K-PUR primer (Very High Solid) similar RAL 7035.

Alternative: PLANE Line PL 2 PREMIUM with flush mounted optics

- Frame:** 3-sided circumferential rebated PLANE Line special corner frame for flush mounted optics on hinge side.
High-quality multi-chamber sealing profile adjustable fixed in the three-sided groove.
- Hinges:** Three-part, height adjustable construction hinges with hinge pin retention and ball bearing spacer ring for smooth door movement.

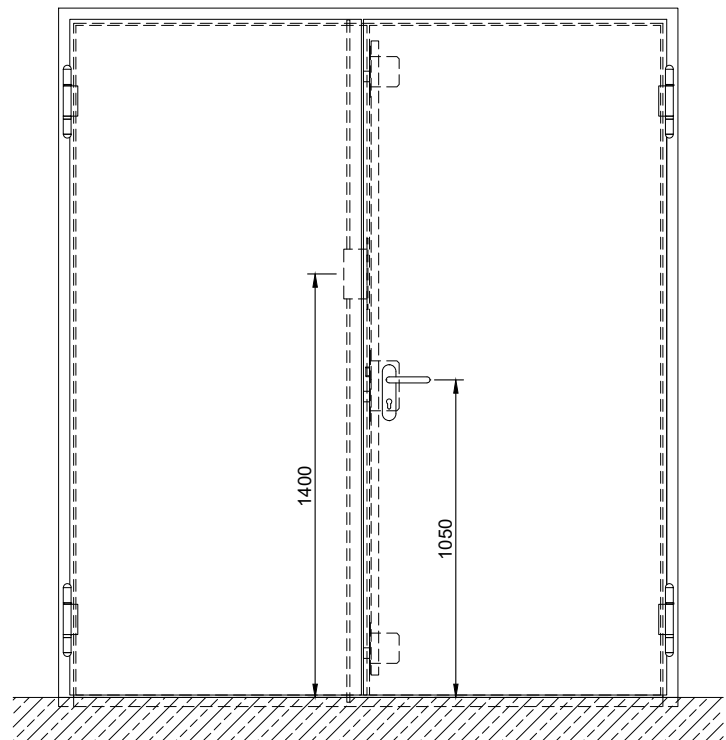
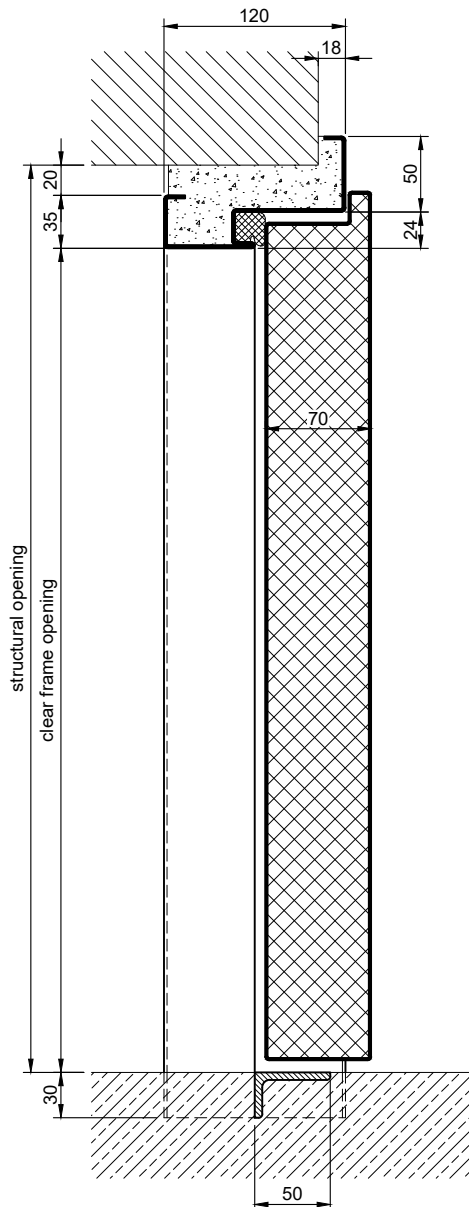
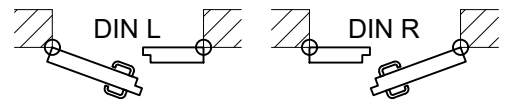
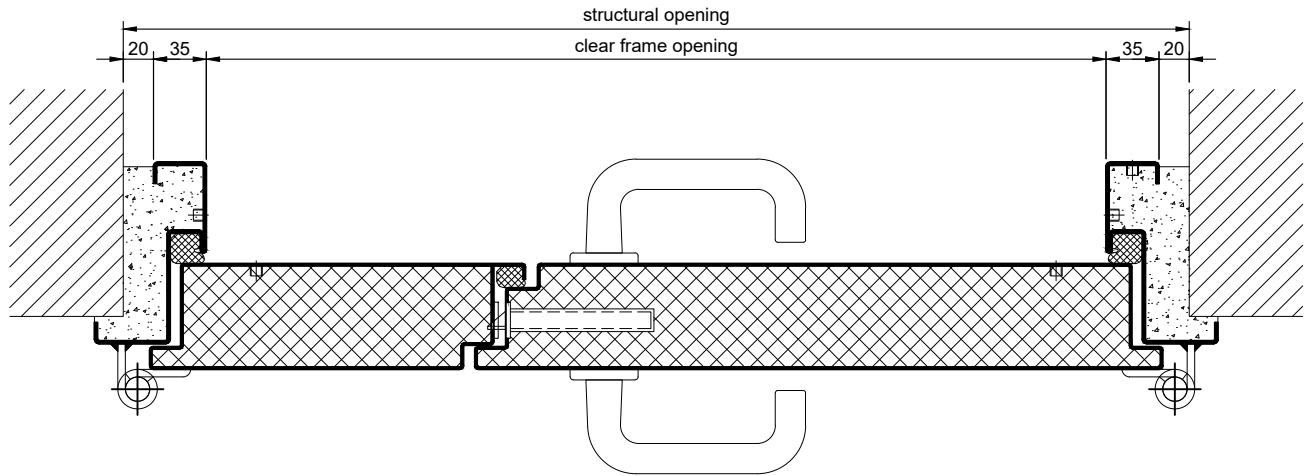
Alternative: PLANE Line PL 2 SUPERIOR with flush mounted optics

- Frame:** 3-sided circumferential rebated PLANE Line special corner frame for flush mounted optics on hinge side.
High-quality multi-chamber sealing profile adjustable fixed in the three-sided groove.
- Hinges:** Three-part, height adjustable construction hinges with hinge pin retention and ball bearing spacer ring for smooth door movement.

Supplementary Equipment

- Glazing:** Non-splintering single or insulating glazing fixed with profiled and visible screwed steel glazing bars.
Minimum border 125 mm on side and top, base 300 mm.
- Ventilation Grille:** Poke-proof ventilation grill.
Inside backed with galvanized 10x10 mm bird screen.
- Grounding:** Grounding connection between door leaf and frame. Separate threaded opening in the frame for connection to the customer's grounding circuit.
- Stainless Steel:** Material 1.4301 (V2A) or 1.4404 (V4A),
Surface mill finish or brushed.

BASIC Version

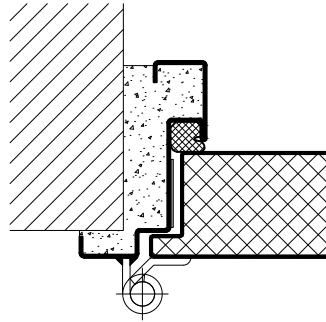


4.10.6 PLANE LINE PL 2 15KPA_EN

technische Änderungen vorbehalten - Stand 07/2024

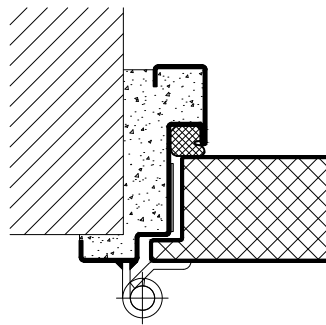
PREMIUM Version

construction hinges



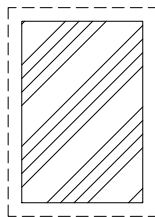
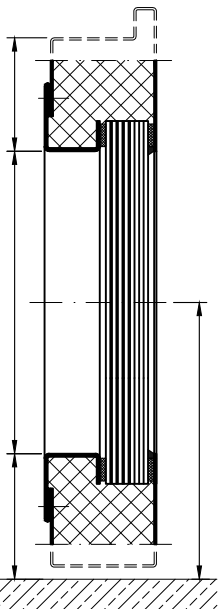
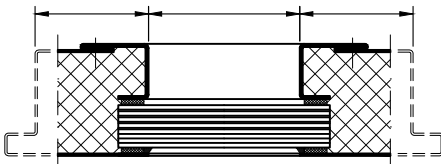
SUPERIOR Version

construction hinges

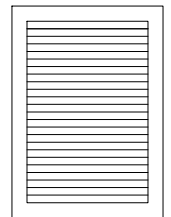
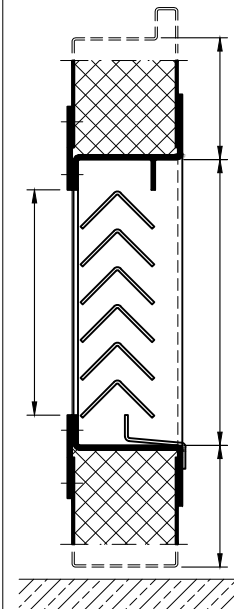
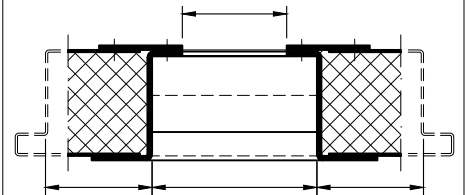


Options

glazing

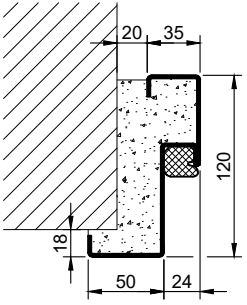
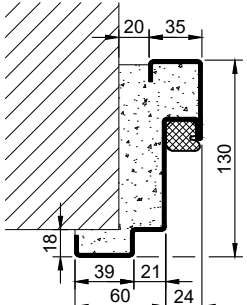
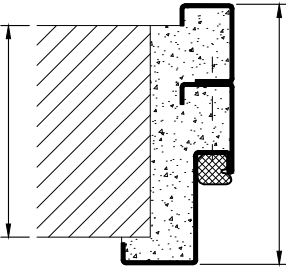
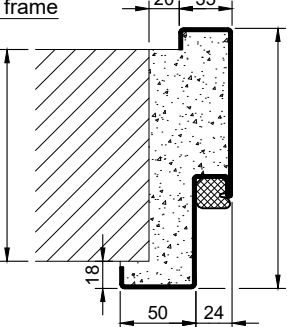
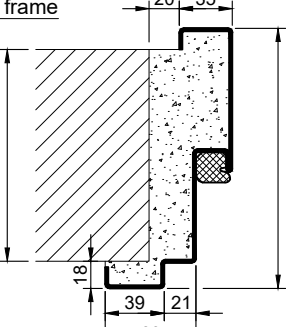
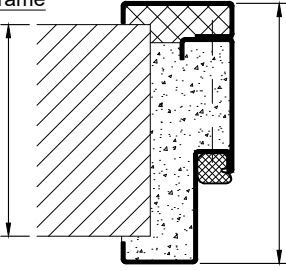
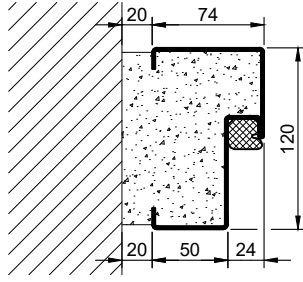

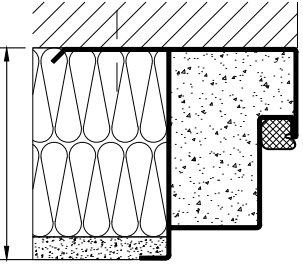


ventilation grill



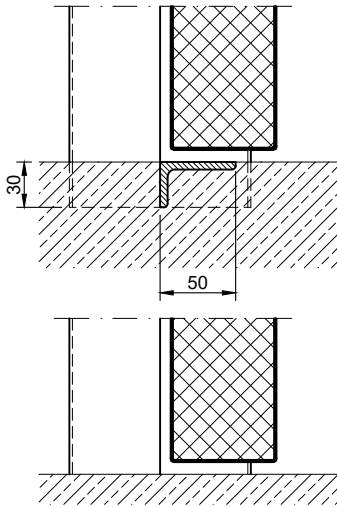
4.10.6 PLANE LINE PL 2 15KPA_EN

technische Änderungen vorbehalten - Stand 07/2024

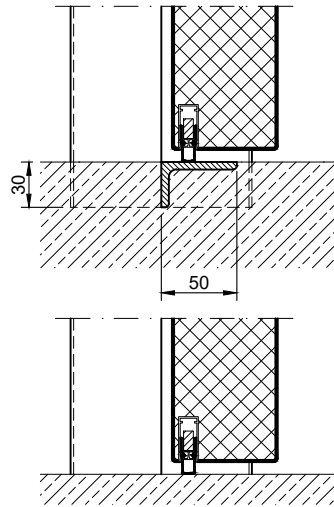
Frames BASIC	Frames PREMIUM/SUPERIOR	Variants (illustration BASIC)
<p>corner frame</p> 	<p>corner frame</p> 	<p>corner frame with additional frame</p> 
<p>encasing frame</p> 	<p>encasing frame</p> 	<p>encasing frame with counter frame</p> 
<p>block frame</p> 	<p>block frame</p> 	<p>jutted block frame</p> 

Thresholds

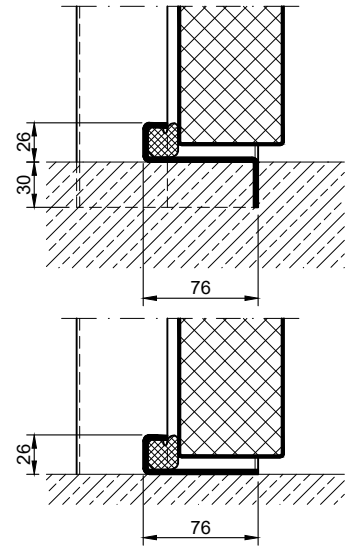
separation sill



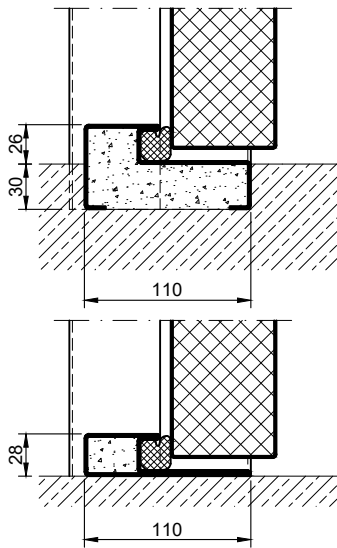
drop seal



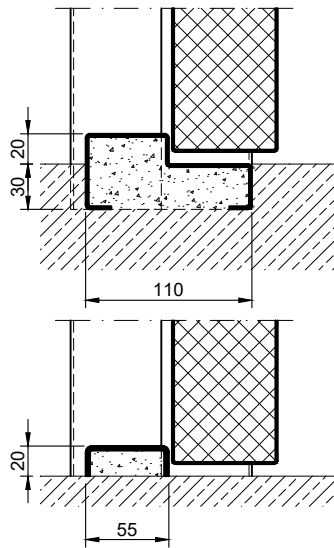
stop sill with seal



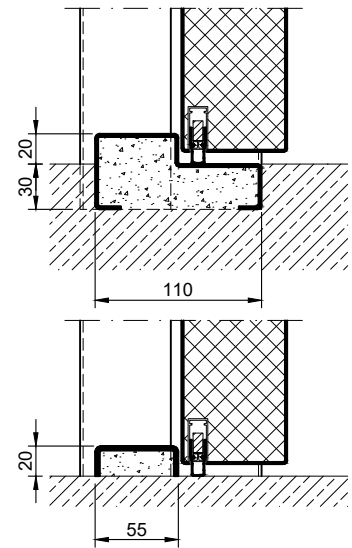
stop sill with seal



stop sill without seal



stop sill with drop seal



full sill

