

### Double Leaf PLANE Line Explosion Resistant Door

**Explosion Resistance**                      **8 kPa**                      **tested acc. to EN 13124-1**

#### Optional Audited Additional Functions

- Burglar Protection	<b>RC2/RC3/RC4/RC5</b>	tested acc. to EN 1627
- Sound Insulation	<b>up to <math>R_{w,P}</math> 54 dB</b>	tested acc. to EN ISO 10140-2
- Bullet Resistance	<b>FB4/FB6-NS</b>	tested acc. to EN 1522
- Air Tight	<b>up to class 4</b>	tested acc. to EN 1026
- Rain- and Fire-Water Tight	<b>class 6A</b>	tested acc. to EN 1027
- Wind load Resistance	<b>up to class C5</b>	tested acc. to EN 1221
- Explosion Resistance	<b>up to Zone1/21</b>	acc. to EN 1127-1 / ATEX 2014/34/EU
- Stainless Steel		

#### Range of Dimension

**Width** from 500 mm to 2500 mm  
**Height** from 500 mm to 2500 mm

#### Technical Specification and Tender Text

<b>Product:</b>	<b>PL 2 double leaf explosion resistant door brand Buchele tested acc. to EN 13124-1</b>
<b>Door Type:</b>	<b>PLANE Line PL 2 BASIC</b>
<b>Explosion Resistance:</b>	<b>8 kPa</b>
<b>Structural Opening:</b>	<b>.... x .... mm</b>
<b>Door Leaf:</b>	Double-walled, planar 70 mm thick steel door leaf without hinge embossing, three sides rebated with thick rebate. Without bottom stop. Special insulating inserts fully laid-in and glued. Securing pin screwed in door leaf rebate. Passive leaf with multi-chamber sealing profile in the middle rebate.
<b>Threshold:</b>	Floor bracket as separation sill. Surface galvanized and welded to the frame.
<b>Frame:</b>	3-sided circumferential rebated corner frame. High-quality multi chamber sealing profile adjustable fixed in the three-sided groove.
<b>Hinges:</b>	Three-part, height adjustable construction hinges with hinge pin retention and ball bearing spacer ring for smooth door movement.
<b>Fitting:</b>	<b>Active leaf:</b> self-locking mortise lock with latch lever function acc. to EN 12209 (prepared for installation of a profile cylinder lock, provided by customer). Door handle set in acc. to EN 1906 fixed pivoted synthetic material black in U-shape with rounded short-plate. <b>Passive leaf</b> with concealed shoot bolt lock.
<b>Surface:</b>	Door leaf and frame galvanized und primed with 2K-PUR primer (Very High Solid) similar RAL 7035.

### Alternative: PLANE Line PL 2 PREMIUM with flush mounted optics

- Frame:** 3-sided circumferential rebated PLANE Line special corner frame for flush mounted optics on hinge side.  
High-quality multi-chamber sealing profile adjustable fixed in the three-sided groove.
- Hinges:** Object hinges type VB-3D 160 adjustable in three dimensions.  
Fixture element with slide bearings inside for smooth door movement.

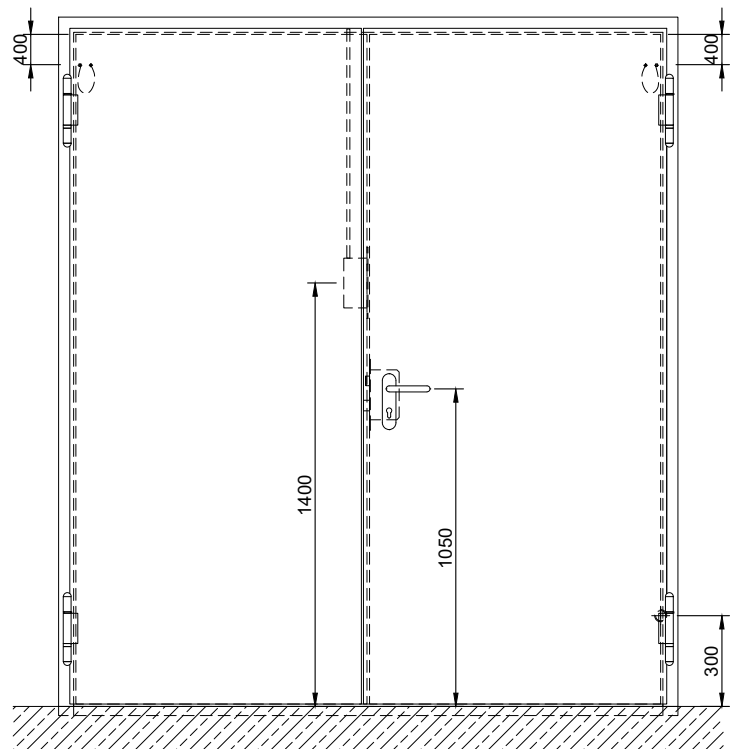
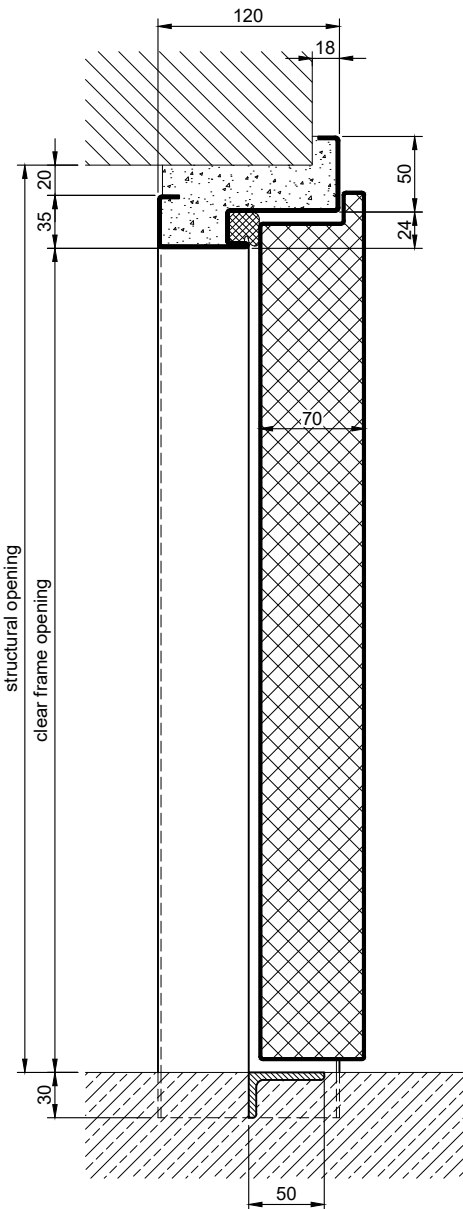
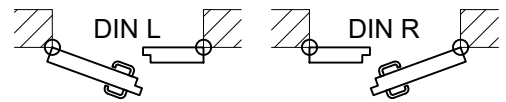
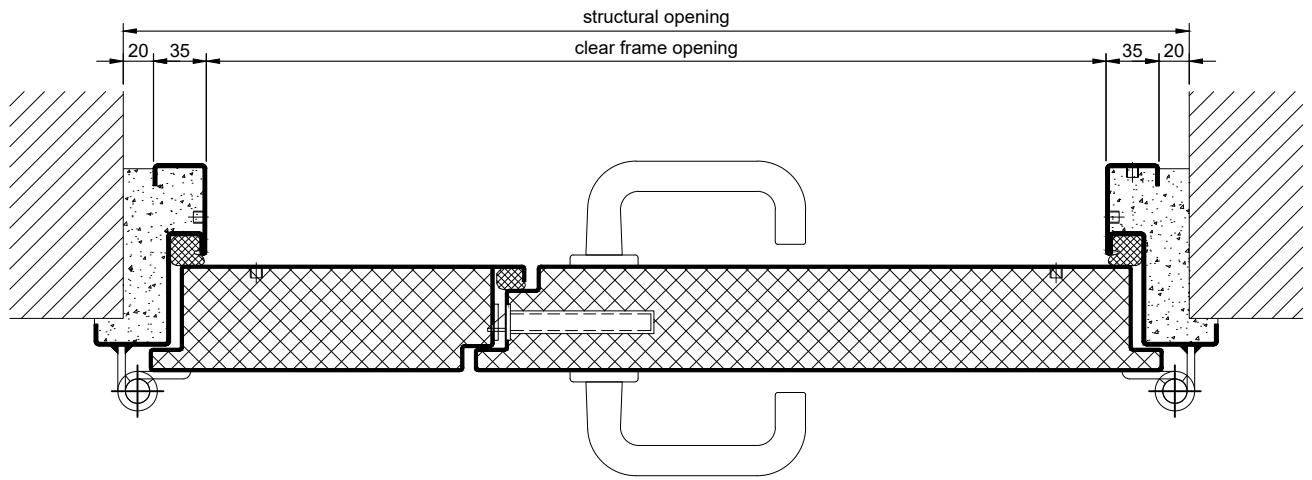
### Alternative: PLANE Line PL 2 SUPERIOR with flush mounted optics

- Frame:** 3-sided circumferential rebated PLANE Line special corner frame for flush mounted optics on hinge side.  
High-quality multi-chamber sealing profile adjustable fixed in the three-sided groove.
- Hinges:** Concealed hinge system adjustable in three dimensions.

### Supplementary Equipment

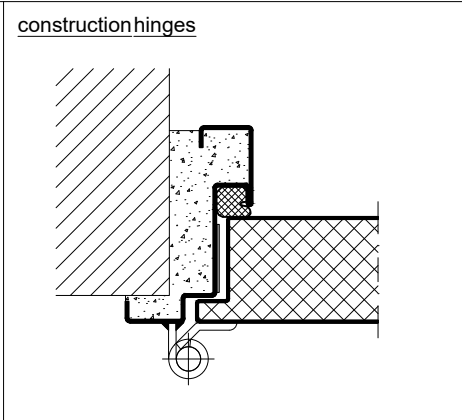
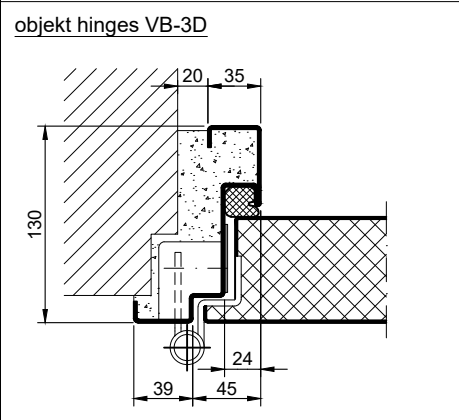
- Glazing:** Non-splintering single or insulating glazing fixed with profiled and visible screwed steel glazing bars.  
Minimum border 125 mm on side and top, base 300 mm.
- Ventilation Grille:** Poke-proof ventilation grill.  
Inside backed with galvanized 10x10 mm bird screen.
- Grounding:** Grounding connection between door leaf and frame. Separate threaded opening in the frame for connection to the customer's grounding circuit.
- Stainless Steel:** Material 1.4301 (V2A) or 1.4404 (V4A),  
Surface mill finish or brushed.

### BASIC Version

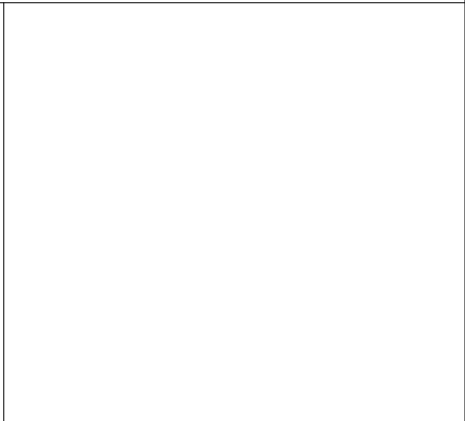
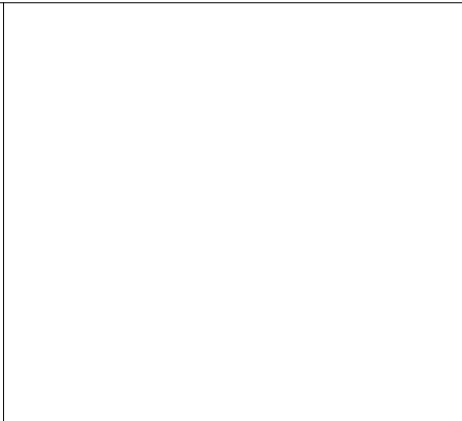
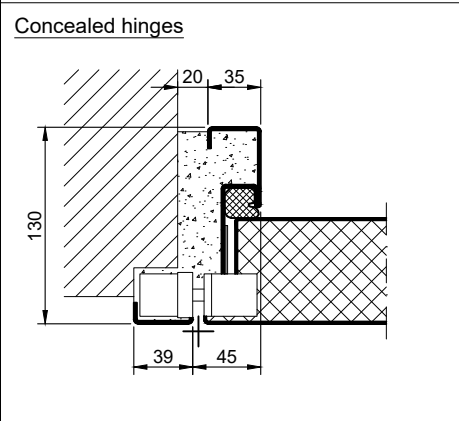


4.10.5\_PLANE LINE PL 2 8KPA\_EN

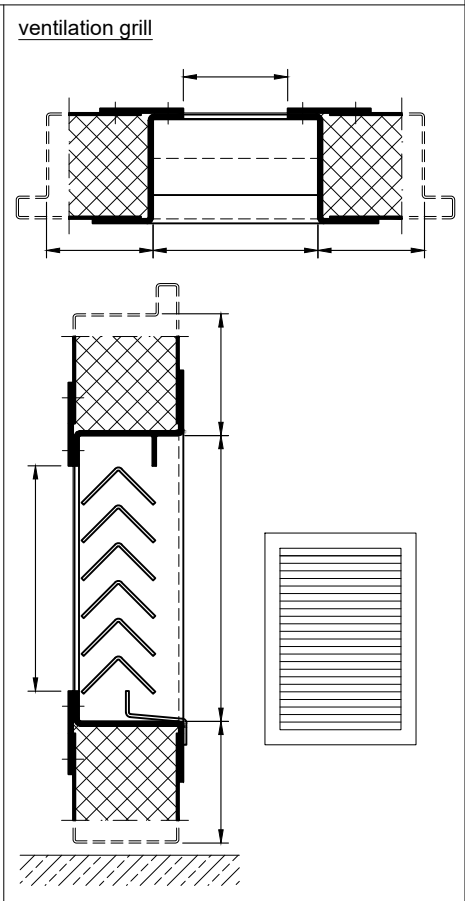
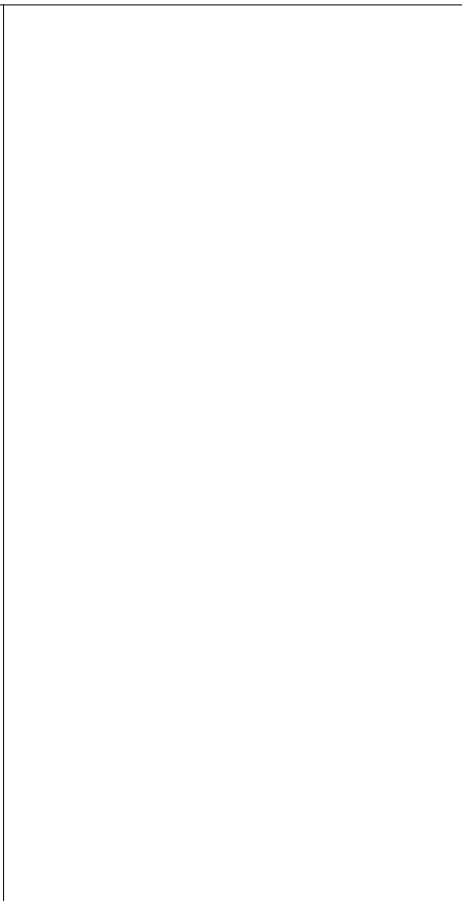
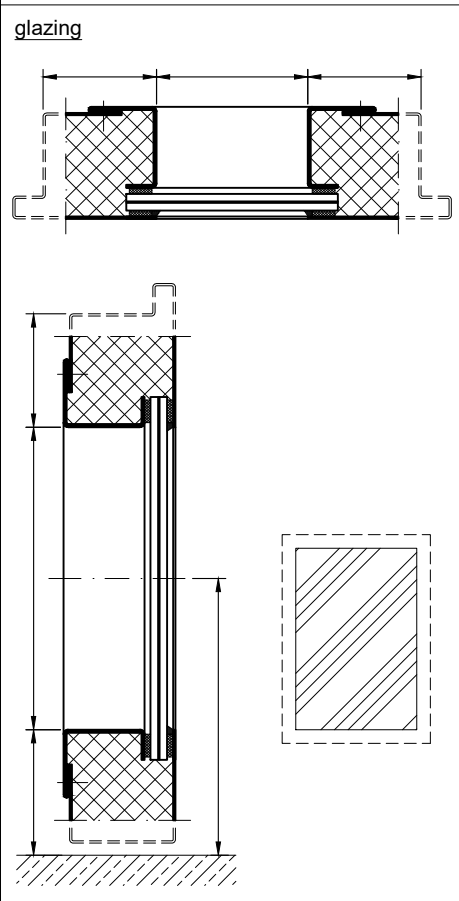
**PREMIUM Version**



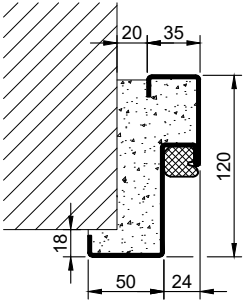
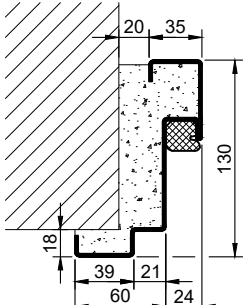
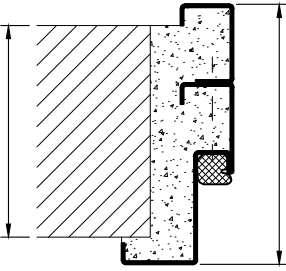
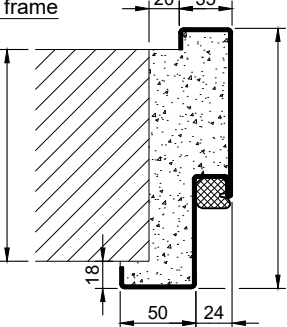
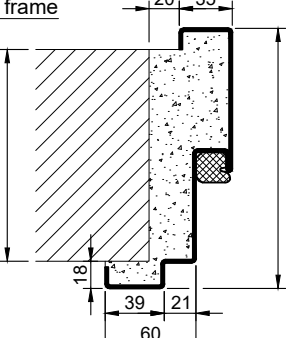
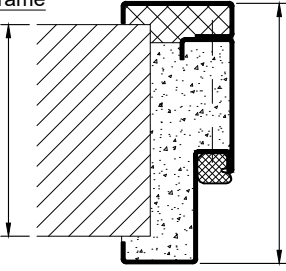
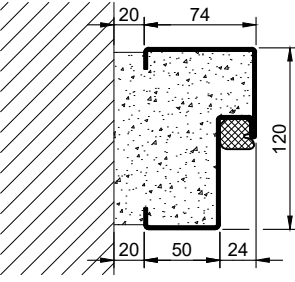
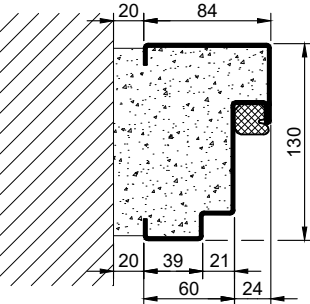
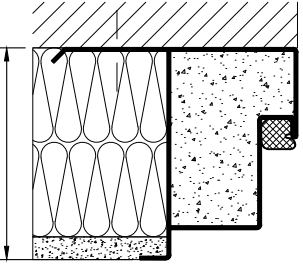
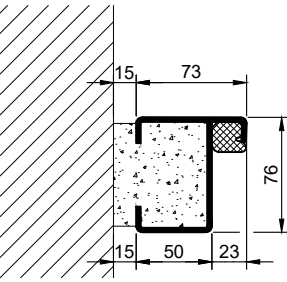
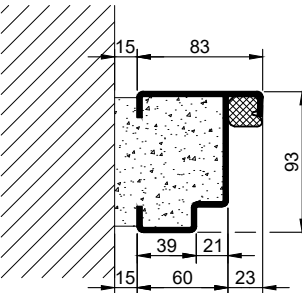
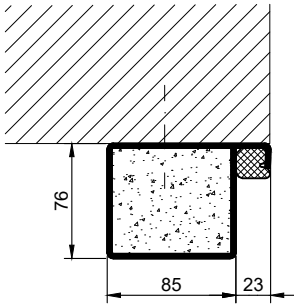
**SUPERIOR Version**



**Options**



4.10.5 PLANE LINE PL 2 8KPA\_EN

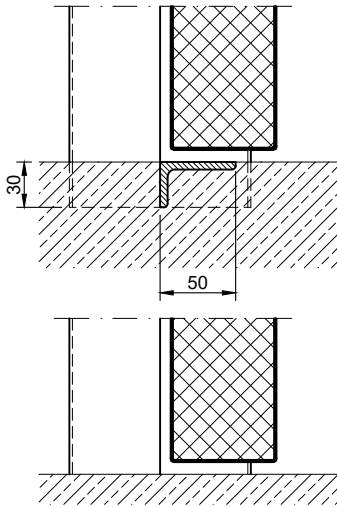
Frames BASIC	Frames PREMIUM/SUPERIOR	Variants (illustration BASIC)
<p>corner frame</p> 	<p>corner frame</p> 	<p>corner frame with additional frame</p> 
<p>encasing frame</p> 	<p>encasing frame</p> 	<p>encasing frame with counter frame</p> 
<p>block frame</p> 	<p>block frame</p> 	<p>jutted block frame</p> 
<p>profile block frame</p> 	<p>profile block frame</p> 	<p>pre-wall frame</p> 

4.10.5 PLANE LINE PL 2 8KPA\_EN

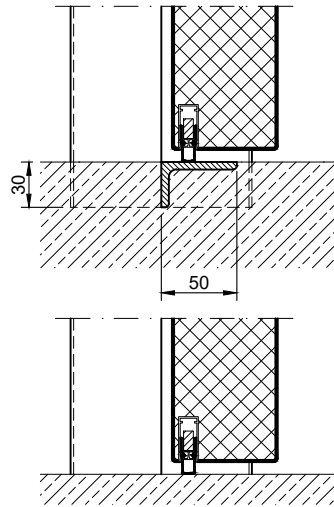
technische Änderungen vorbehalten - Stand 07/2024

### Thresholds

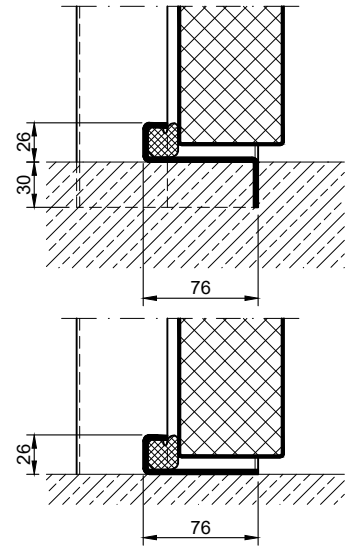
separation sill



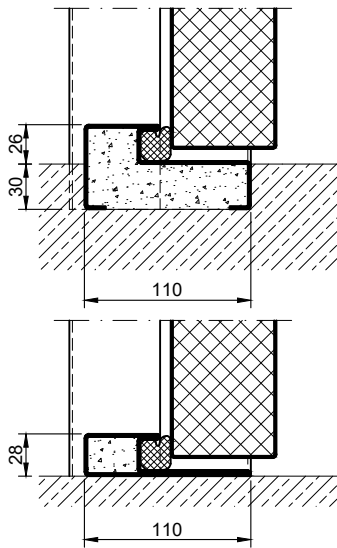
drop seal



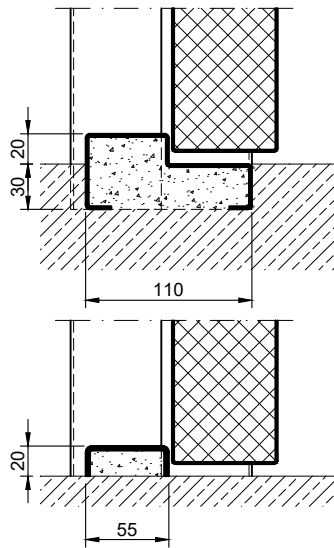
stop sill with seal



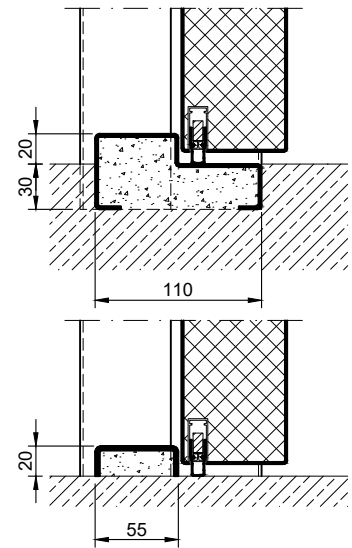
stop sill with seal



stop sill without seal



stop sill with drop seal



full sill

