

Double Leaf PLANE Line Explosion Resistant Door

Explosion Resistance up to zone 1/21 acc. to EN 1127-1 / ATEX 2014/34/EU

Optional Audited Additional Functions

- Burglar Protection	RC2/RC3/RC4/RC5	tested acc. to EN 1627
- Sound Insulation	up to $R_{w,P}$ 54 dB	tested acc. to EN ISO 10140-2
- Bullet Resistance	FB4/FB6-NS	tested acc. to EN 1522
- Air Tight	up to class 4	tested acc. to EN 1026
- Rain- and Fire-Water Tight	class 6A	tested acc. to EN 1027
- Wind load Resistance	up to class C5	tested acc. to EN 1221
- Blast Resistance	up to 20 kPa	tested acc. to EN 13124-1
- Stainless Steel		

Range of Dimension

Width from 1375 mm to 3000 mm
Height from 1375 mm to 3000 mm

Technical Specification and Tender Text

Product:	PL 2 double leaf explosion resistant door brand Buchele
Door Type:	PLANE Line PL 2 BASIC
Explosion Resistance:	Zone 1 (IIA, IIB) / Zone 2 (IIA, IIB) / Zone 21 / Zone 22 acc. to EN 1127-1 or ATEX 2014/34/EU
Structural Opening: x mm
Door Leaf:	Double-walled, planar 70 mm thick steel door leaf without hinge embossing, three sides rebated with thick rebate. Without bottom stop. Special insulating inserts fully laid-in and glued. Securing pin screwed in door leaf rebate. Passive leaf with multi-chamber sealing profile in the middle rebate.
Threshold:	Floor bracket as separation sill. Surface galvanized and welded to the frame.
Frame:	3-sided circumferential rebated corner frame. High-quality multi chamber sealing profile adjustable fixed in the three-sided groove.
Hinges:	Three-part, height adjustable construction hinges with hinge pin retention and ball bearing spacer ring for smooth door movement.
Fitting:	Active leaf: mortise lock with latch lever function acc. to EN 12209 (prepared for installation of a profile cylinder lock, provided by customer). Door handle set in acc. to EN 1906 fixed pivoted synthetic material black in U-shape with rounded short-plate. Passive leaf with concealed shoot bolt lock.
Grounding:	Ground connection between door leaves and frame. Separate threaded opening in the frame for connection to the customer's grounding circuit.

Surface: Door leaf and frame galvanized und primed with 2K-PUR primer (Very High Solid) similar RAL 7035.

Alternative: PLANE Line PL 2 PREMIUM with flush mounted optics

Frame: 3-sided circumferential rebated PLANE Line special corner frame for flush mounted optics on hinge side.
High-quality multi-chamber sealing profile adjustable fixed in the three-sided groove.

Hinges: Object hinges type VB-3D 160 adjustable in three dimensions.
Fixture element with slide bearings inside for smooth door movement.

Alternative: PLANE Line PL 2 SUPERIOR with flush mounted optics

Frame: 3-sided circumferential rebated PLANE Line special corner frame for flush mounted optics on hinge side.
High-quality multi-chamber sealing profile adjustable fixed in the three-sided groove.

Hinges: Concealed hinge system adjustable in three dimensions.

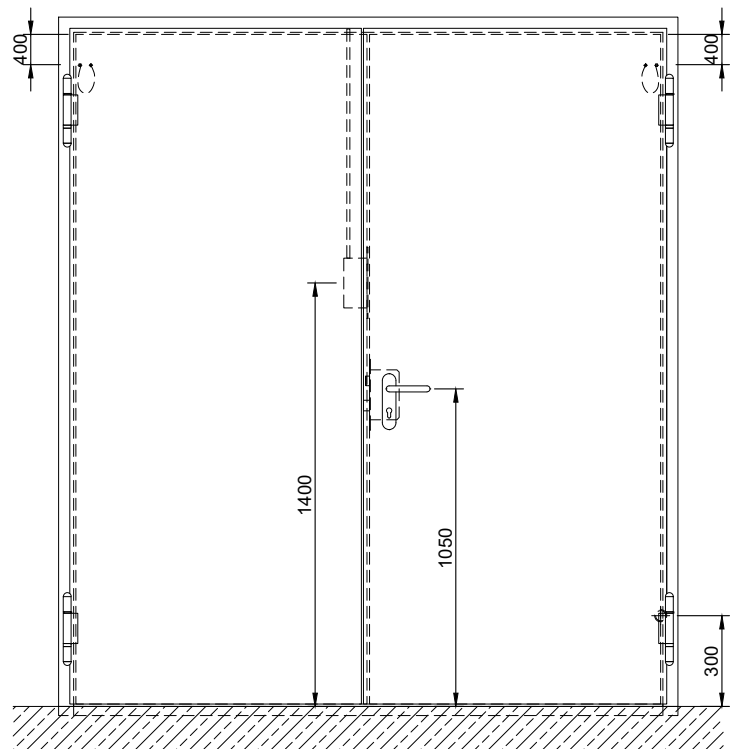
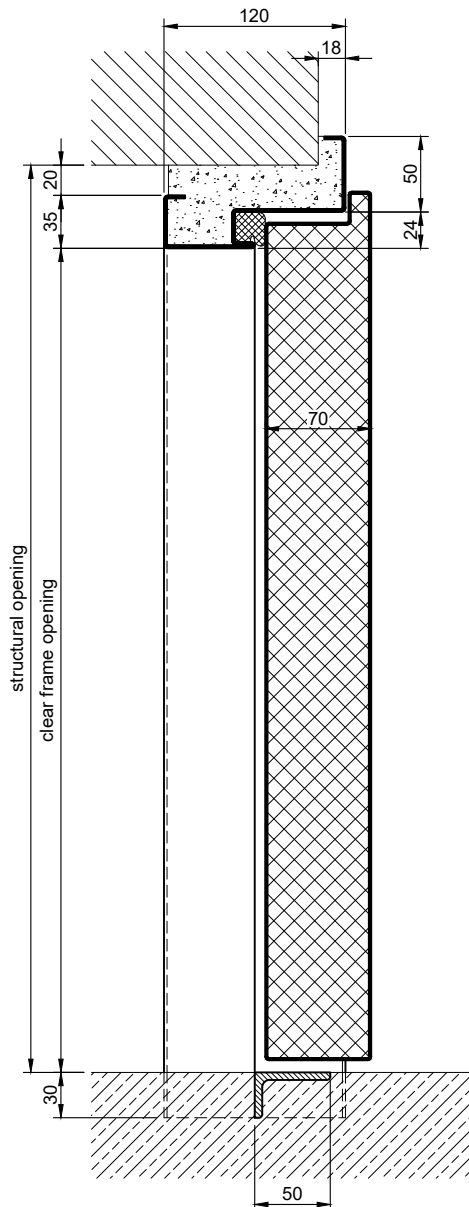
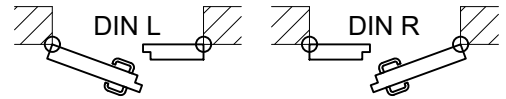
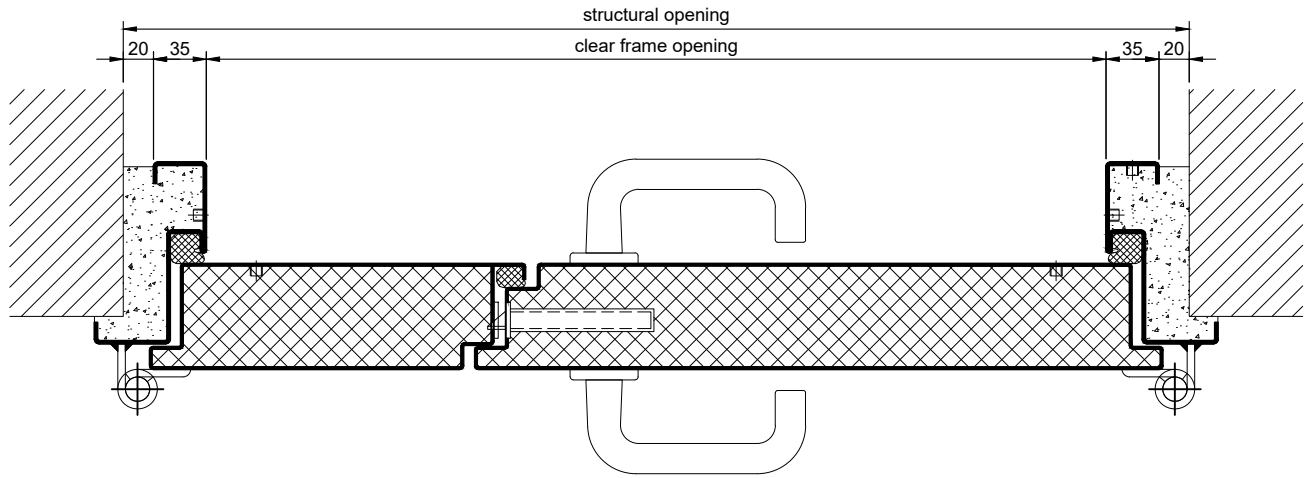
Supplementary Equipment

Glazing: Non-splintering single or insulating glazing fixed with profiled and visible screwed steel glazing bars.
Minimum border 125 mm on side and top, base 300 mm.

Ventilation Grille; Poke-proof ventilation grill.
Inside backed with galvanized 10x10 mm bird screen.

Stainless Steel: Material 1.4301 (V2A) or 1.4404 (V4A),
Surface mill finish or brushed.

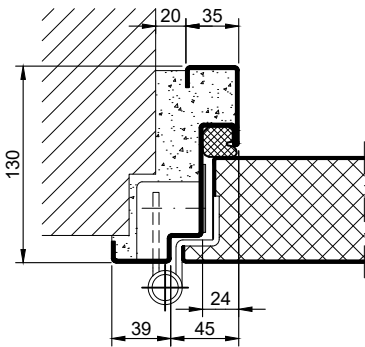
BASIC Version



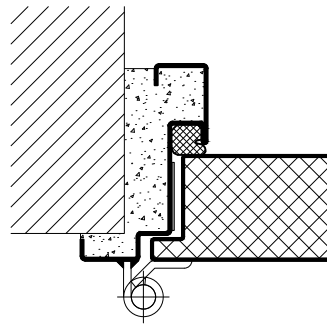
4.10.1_PLANE LINE PL 2 EX_EN

PREMIUM Version

objekt hinges VB-3D

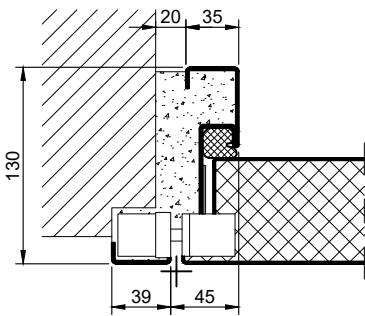


construction hinges



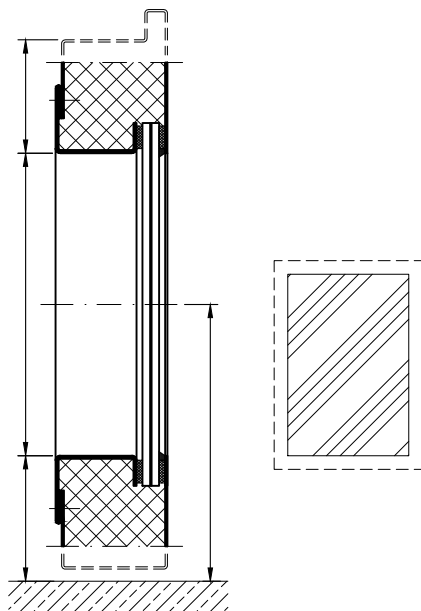
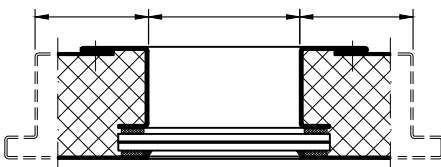
SUPERIOR Version

Concealed hinges

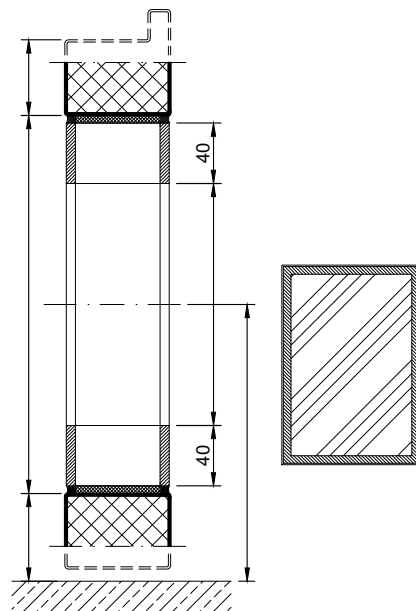
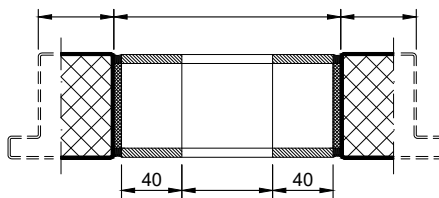


Options

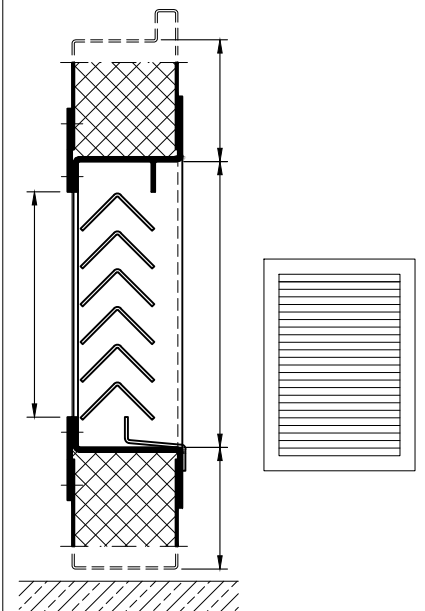
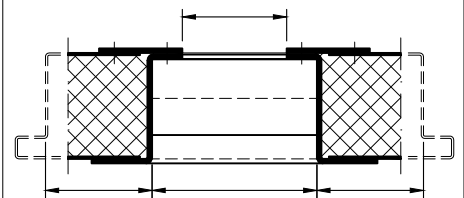
glazing



flush glazing



ventilation grill



4.10.1 PLANE LINE PL 2 EX_EN

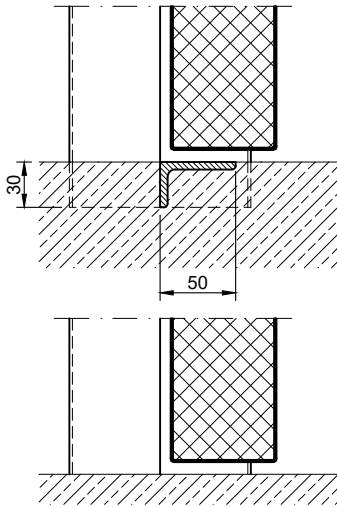
Frames BASIC	Frames PREMIUM/SUPERIOR	Variants (illustration BASIC)
<p>corner frame</p>	<p>corner frame</p>	<p>corner frame with additional frame</p>
<p>encasing frame</p>	<p>encasing frame</p>	<p>encasing frame with counter frame</p>
<p>block frame</p>	<p>block frame</p>	<p>juttet block frame</p>
<p>corner frame with counter frame</p>	<p>corner frame with counter frame</p>	<p>corner frame at support / pillar</p>
<p>profile block frame</p>	<p>profile block frame</p>	<p>pre-wall frame</p>

4.10.1. PLANE LINE PL 2 EX_EN

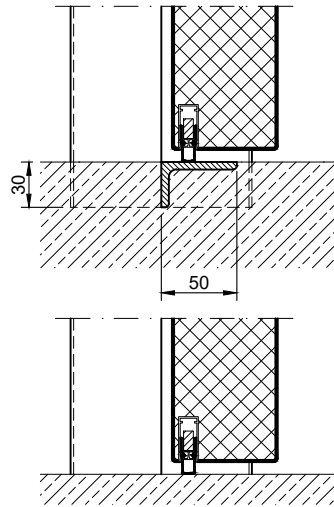
technische Änderungen vorbehalten - Stand 07/2024

Thresholds

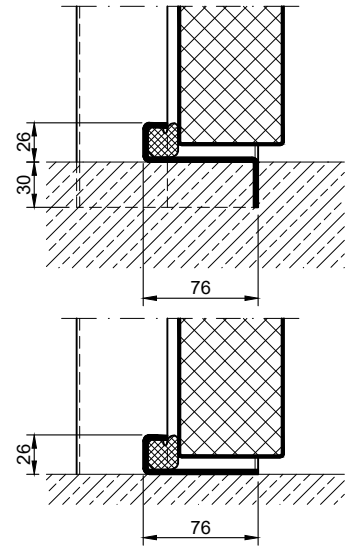
separation sill



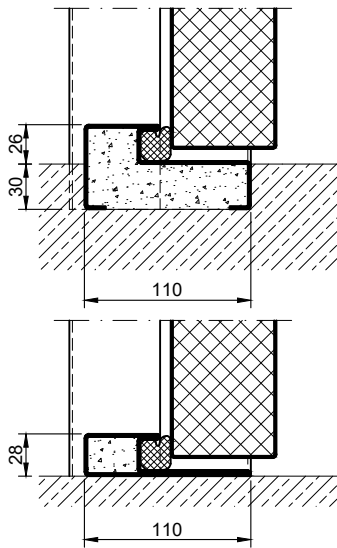
drop seal



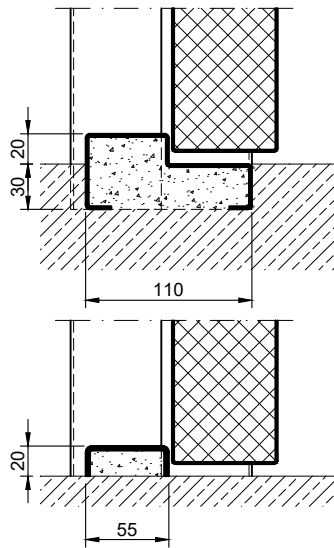
stop sill with seal



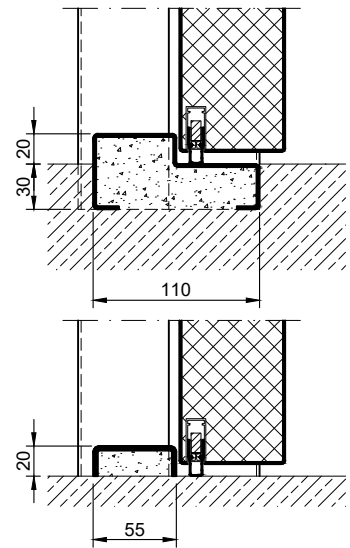
stop sill with seal



stop sill without seal



stop sill with drop seal



full sill

