

Single Leaf PLANE Line Pressure Relief Hatch

Optional Audited Additional Functions

- Sound Insulation	up to $R_{w,P}$ 46 dB	tested acc. to EN ISO 10140-2
- Air Tight	up to class 4	tested acc. to EN 1026
- Rain- and Fire-Water Tight	class 6A	tested acc. to EN 1027
- Wind load Resistance	up to class C5	tested acc. to EN 1221
- Explosions Resistance	up to Zone 1/21	acc. to EN 1127-1 / ATEX 2014/34/EU
- Stainless Steel		

Range of Dimension

Width from 500 mm to 3000 mm
Height from 500 mm to 1500 mm

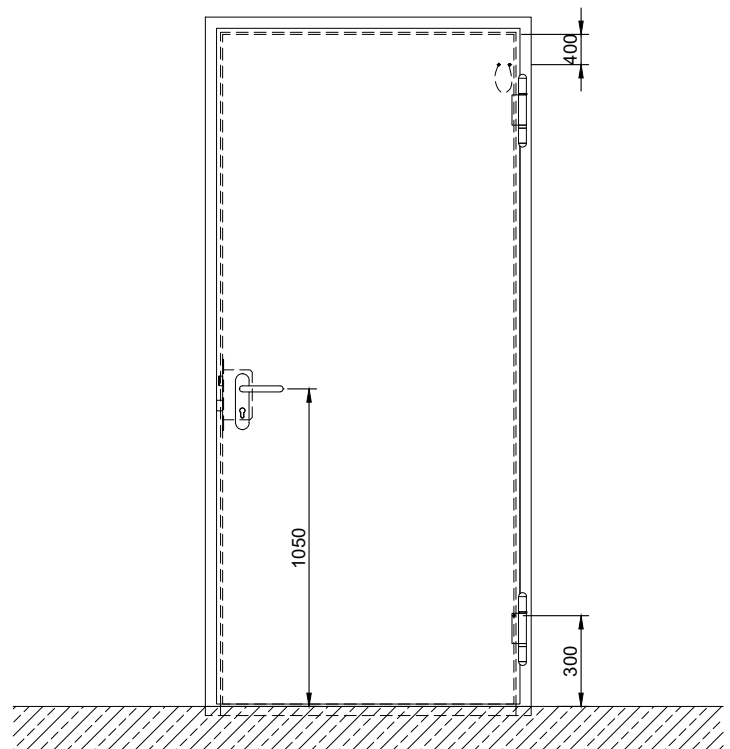
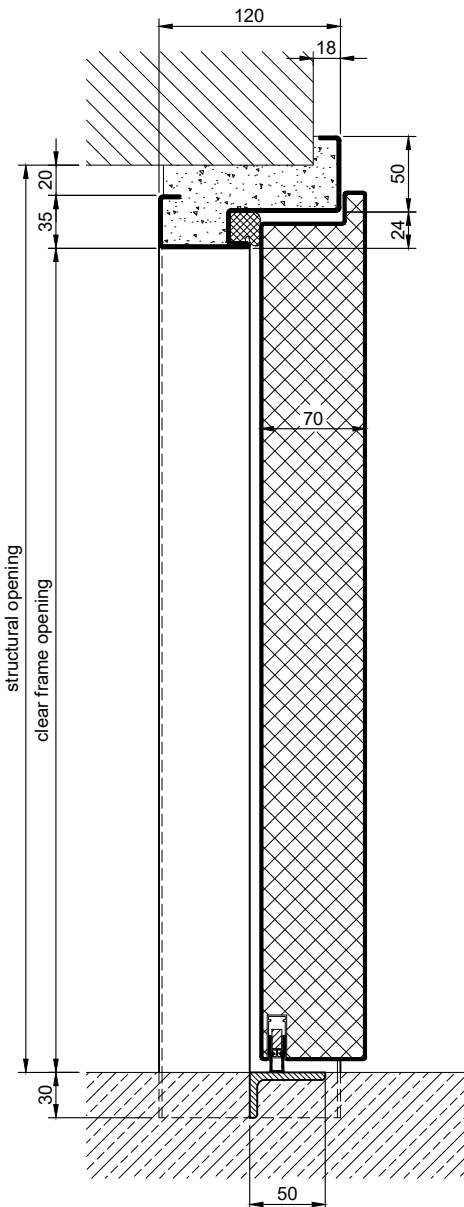
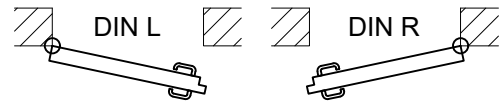
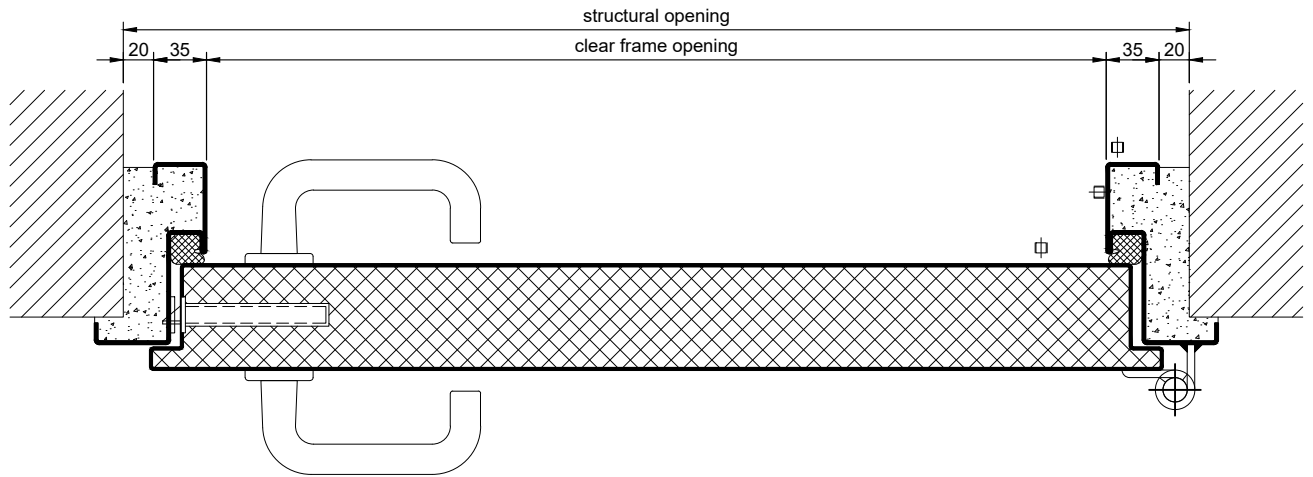
Technical Specification and Tender Text

Product:	PL 1 single leaf pressure relief hatch brand Buchele tested
Door Type:	PLANE Line PL 1 BASIC
Structural Opening:	... x ... mm
Door Leaf:	Double-walled, planar 70 mm thick steel door leaf without hinge embossing, three sides rebated with thick rebate. Without bottom stop. Special insulating inserts fully laid-in and glued. Securing pin screwed in door leaf rebate.
Frame:	3-sided circumferential rebated corner frame. High-quality multi chamber sealing profile adjustable fixed in the three-sided groove.
Hinges:	Overhead three-part, height adjustable construction hinges with hinge pin retention and ball bearing spacer ring for smooth door movement.
Fitting:	Adjustable dampers to hold the flap closed.
Surface:	Door leaf and frame galvanized und primed with 2K-PUR primer (Very High Solid) similar RAL 7035.

Supplementary Equipment

Grounding:	Grounding connection between door leaf and frame. Separate threaded opening in the frame for connection to the customer's grounding circuit.
Loss-prevention Chain:	Plastic-coated chains as opening limitation
Stainless Steel:	Material 1.4301 (V2A) or 1.4404 (V4A). Surface mill finish or brushed.

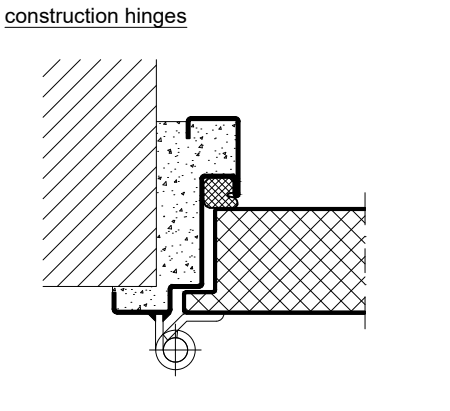
BASIC Version



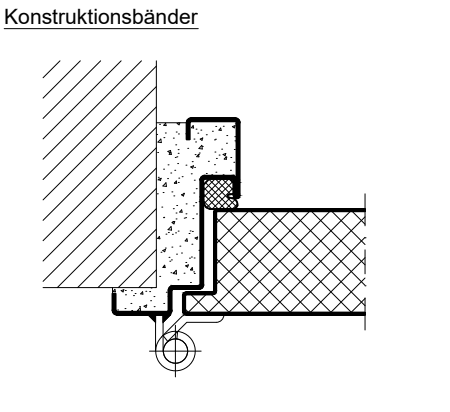
4.0.7_PLANE LINE PL 1 - 20KPA_EN

technical modifications reserved - edition 07/2024

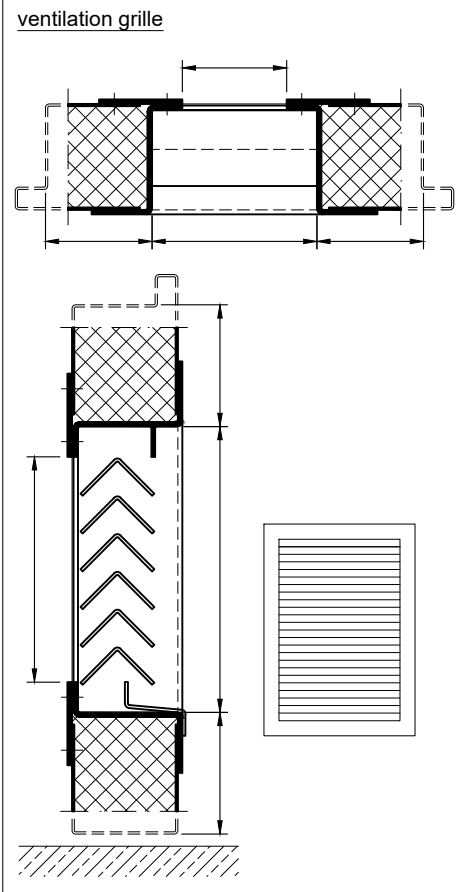
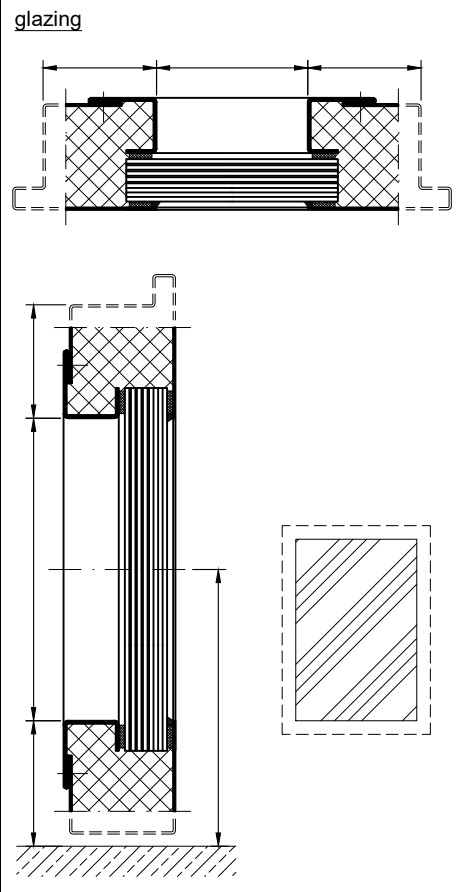
PREMIUM Version



SUPERIOR Version

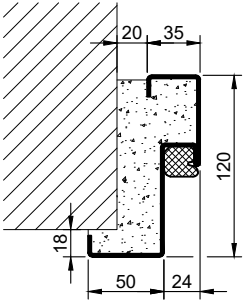
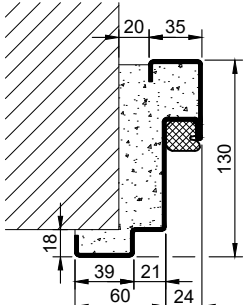
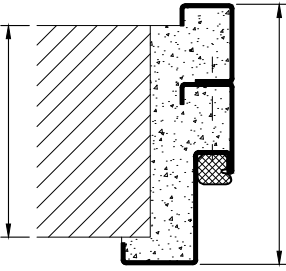
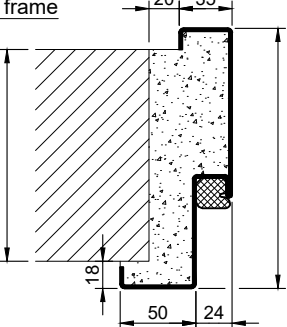
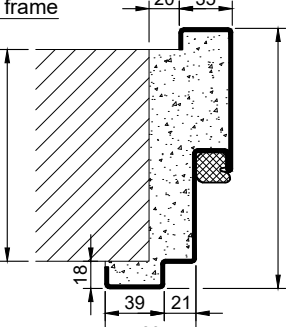
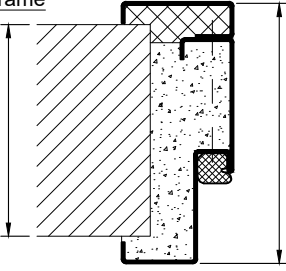
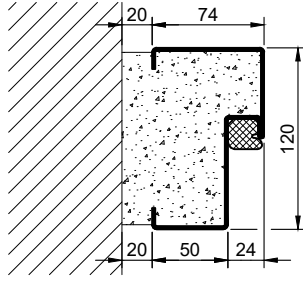

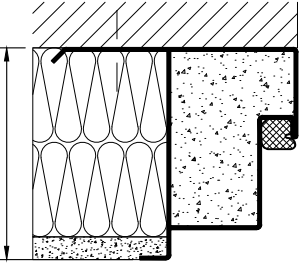


Options



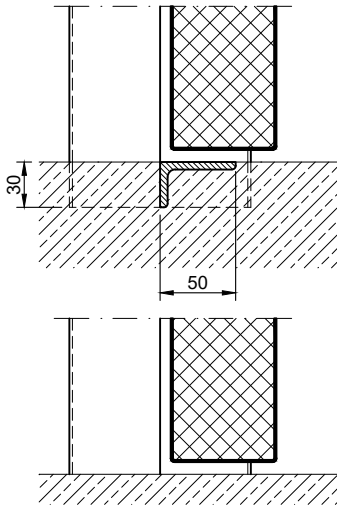
4.0.7_PLANE LINE PL 1 - 20KPA_EN

technical modifications reserved - edition 07/2024

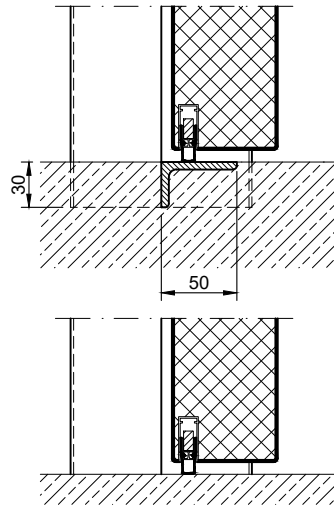
Frames BASIC	Frames PREMIUM/SUPERIOR	Variants (illustration BASIC)
<p>corner frame</p> 	<p>corner frame</p> 	<p>corner frame with additional frame</p> 
<p>encasing frame</p> 	<p>encasing frame</p> 	<p>encasing frame with counter frame</p> 
<p>block frame</p> 	<p>block frame</p> 	<p>jutted block frame</p> 

Schwellen

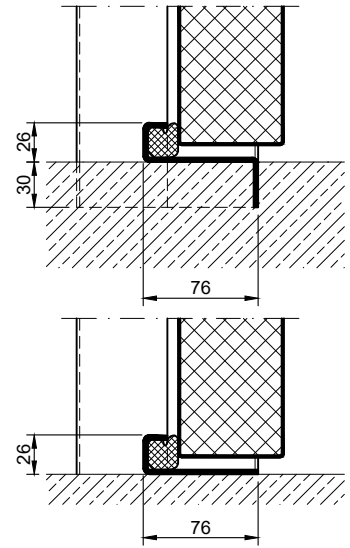
separation sill



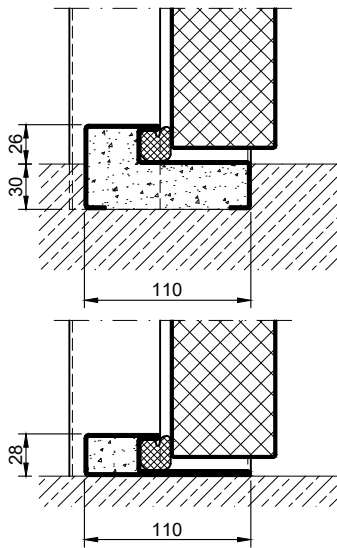
drop seal



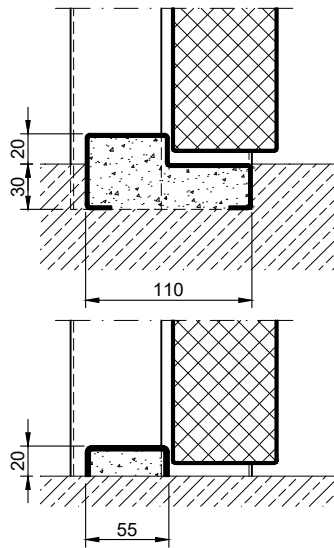
stop sill with seal



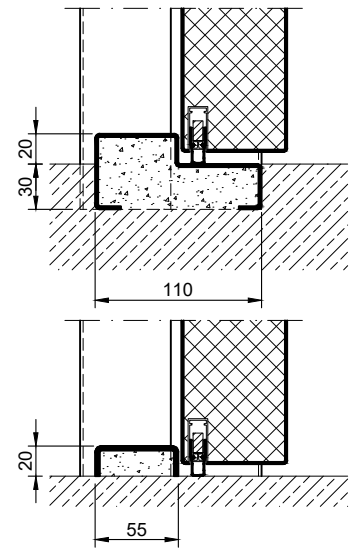
stop sill with seal



stop seal without seal



stop sill with drop seal



full sill

