

### Single Leaf ROTARY Line Vertically Pivoted Bullet Resistant Security Door

**Bullet Resistance**                      **FB 4 NS**                      **tested acc. to EN 1522**

#### Optional Audited Additional Functions

- Sound Insulation	<b>up to <math>R_{w,P}</math> 54dB</b>	tested acc. to EN ISO 10140-2
- Burglar Protection	<b>RC2/RC3</b>	tested acc. to EN 1627
- Air Tight	<b>up to class 3</b>	tested acc. to EN 1026
- Rain- and Fire-Water Tight	<b>class 2B</b>	tested acc. to EN 1027
- Wind load Resistance	<b>class C5</b>	tested acc. to EN 12211
- Blast Resistance	<b>up to 2 kPa</b>	tested acc. to EN 13124-1
- Explosion Protection	<b>up to zone 1/21</b>	acc. to EN 1127-1 or ATEX 2014/34/EU
- Stainless Steel		

#### Range of Dimension

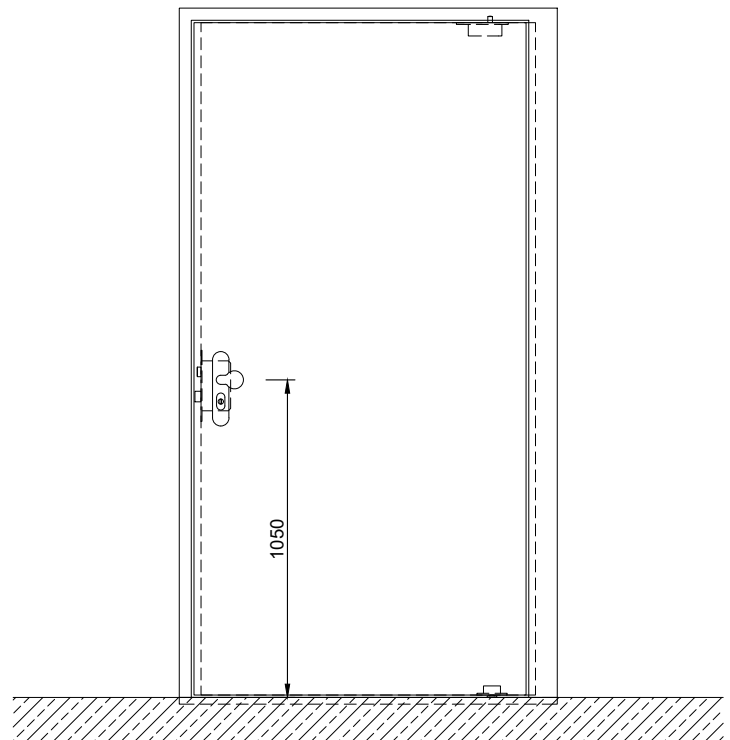
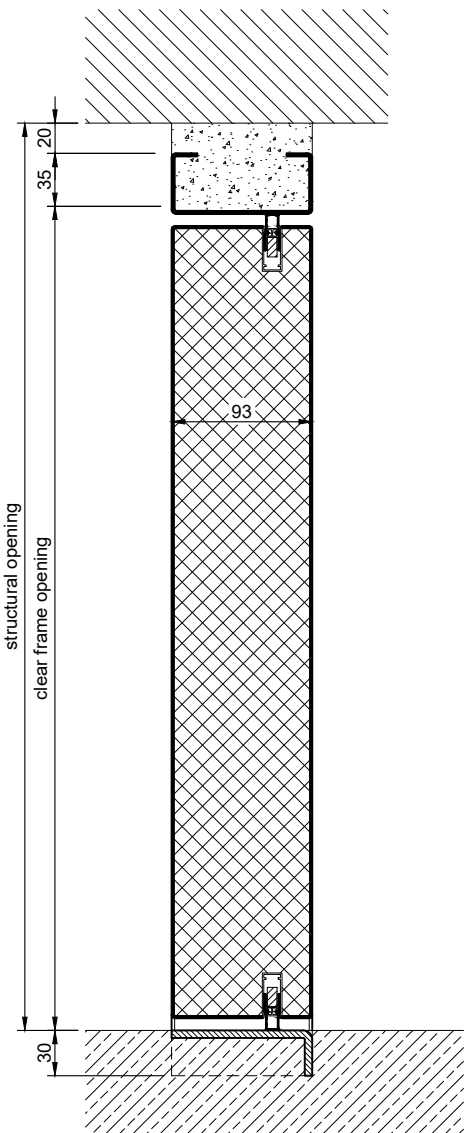
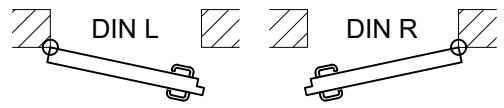
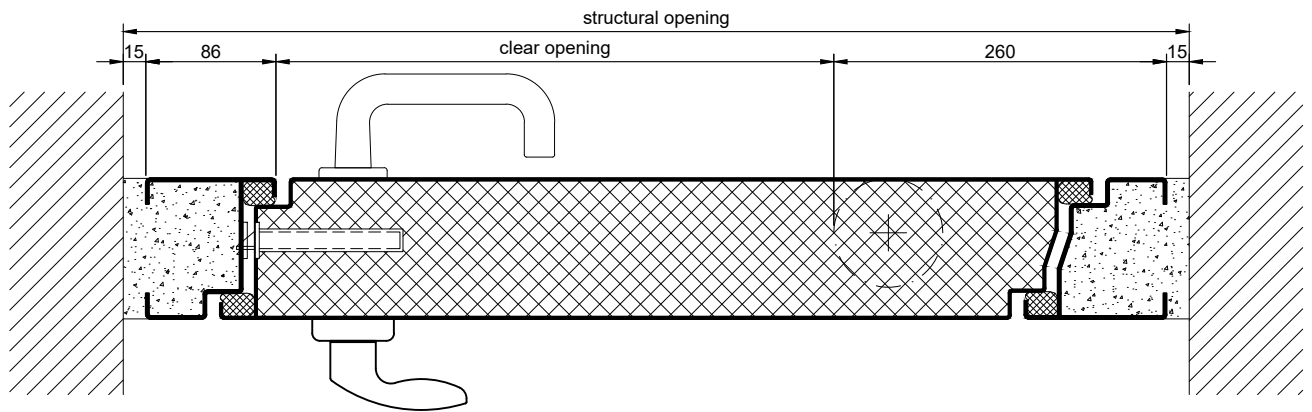
**Width** from 1000 mm to 1750 mm  
**Height** from 1750 mm to 3500 mm

#### Technical Specification and Tender Text

<b>Product:</b>	<b>RL 1 single leaf vertically pivoted security door brand Buchele tested acc. to EN 1522</b>
<b>Door Type:</b>	<b>ROTARY Line RL 1</b>
<b>Bullet Resistance:</b>	<b>FB 4 NS</b>
<b>Rohbauöffnung:</b>	<b>.... x .... mm</b>
<b>Door Leaf:</b>	Double-walled, planar 93 mm thick steel door leaf, two sides rebated with thick rebate and adjustable fixed sealing profile in rebate. Without bottom stop. Special insulating inserts fully laid-in and glued. Drop seal system in bottom part of the door. Lifting seal system in top part of the door.
<b>Threshold:</b>	Floor bracket as separation sill. Surface stainless steel and welded to the frame.
<b>Frame:</b>	3-sided circumferential rebated block frame with visible black coated intumescent material in rebate. High-quality multi chamber sealing profile adjustable fixed in the two-sided groove.
<b>Hinges:</b>	Concealed hinge system integrated in frame and floor, ball beared for smart door movement. The door leaf rotates around a vertical axis.
<b>Fitting:</b>	2-point security mortise lock with latch lever function acc. to EN 12209 (prepared for installation of a profile cylinder lock, provided by customer). Security door handle set in acc. to EN 1906 fixed pivoted synthetic material black in U-shape with rounded long-plate.
<b>Surface:</b>	Door leaf and frame galvanized und primed with 2K-PUR primer (Very High Solid) similar RAL 7035.

### Supplementary Equipment

<b>Glazing:</b>	BR4 single or insulating glazing fixed with profiled steel glazing bars. Minimum border 125 mm on side and top, base 300 mm.
<b>Stainless Steel:</b>	Material 1.4301 (V2A) or 1.4404 (V4A), Surface mill finish or brushed.
<b>BUCHELE DELUXE:</b>	The exclusive surface coating.



3.1.4\_ROTARY LINE RL 1\_FB4\_EN

technical modifications reserved - edition 06/2024