

## Double Leaf FB7 NS Bullet Resistant Security Door with Fixed Glazing Side Panel in Tube Frame Construction

**Bullet Resistance**                      **FB 7 NS**                      **tested acc. to EN 1522**

### Range of Dimension

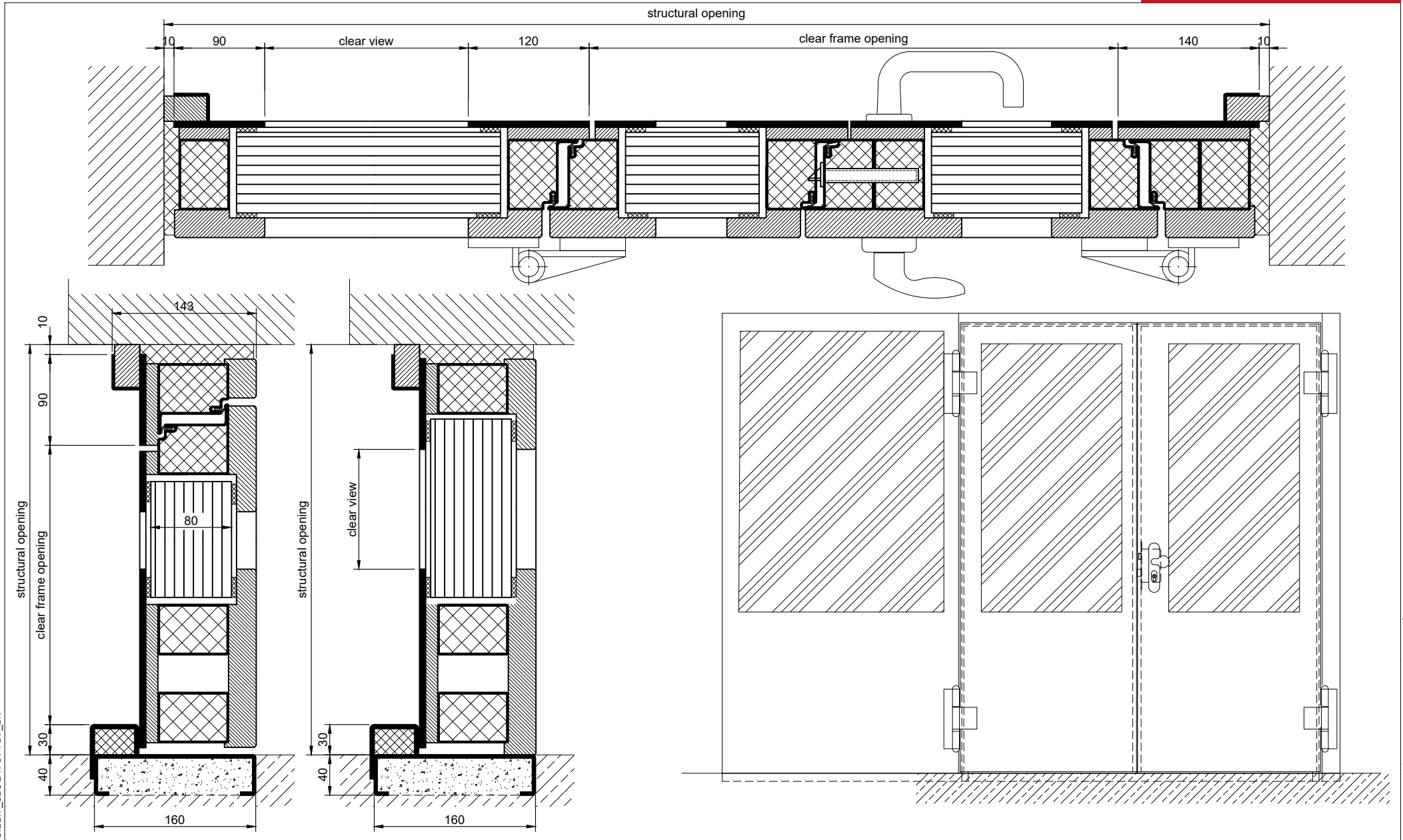
**Width** from 1375 mm to 1500 mm  
**Height** from 1750 mm to 3000 mm

### Technical Specification and Tender Text

|                            |   |
|----------------------------|---|
| <b>Product:</b>            | <b>SEC 2 double leaf bullet resistant security door with fixed glazing side panel brand Buchele tested acc. to EN 1522</b>  |
| <b>Door Type:</b>          | <b>SEC 2-R-ST / FB 7 NS</b>   |
| <b>Bullet Resistance:</b>  | <b>FB 7 NS</b>  |
| <b>Structural Opening:</b> | <b>.... x .... mm</b>   |
| <b>Door Leaf:</b>          | 116 mm thick steel door leaf, three sides rebated, border on three sides 105 mm, border on lock side 155mm, BR7 safety glazing fixed with visible screwed steel glazing frame.  |
| <b>Threshold:</b>          | Stop sill. Surface galvanized.  |
| <b>Frame Door:</b>         | 3-sided block frame with sealing profile in the rebate.   |
| <b>Frame Side Panel:</b>   | 3-sided block frame attached to the side of the door frame. With BR7 glazing fixed with a visible screwed-on glazing frame.   |
| <b>Hinges:</b>             | Three-part construction hinges with ball bearing spacer ring.   |
| <b>Fitting:</b>            | <b>Active leaf</b> with mortise lock with latch lever function (prepared for installation of a profile cylinder lock).<br><b>Passive leaf</b> with an inside 2-point-locking system and shoot bolt lock, stainless steel. |
| <b>Surface:</b>            | Door leaf and frame galvanized und primed with 2K-PUR primer (Very High Solid) similar RAL 7035.  |

### Supplementary Equipment

**BUCHELE DELUXE:**                      The exclusive surface coating.



3.11.7\_SEC 2 R-ST FB7\_EN