

Double Leaf FB7 NS Bullet Resistant Security Door with Fixed Glazing Side Panel

Bullet Resistance **FB 7 NS** **tested acc. to EN 1522**

Range of Dimension

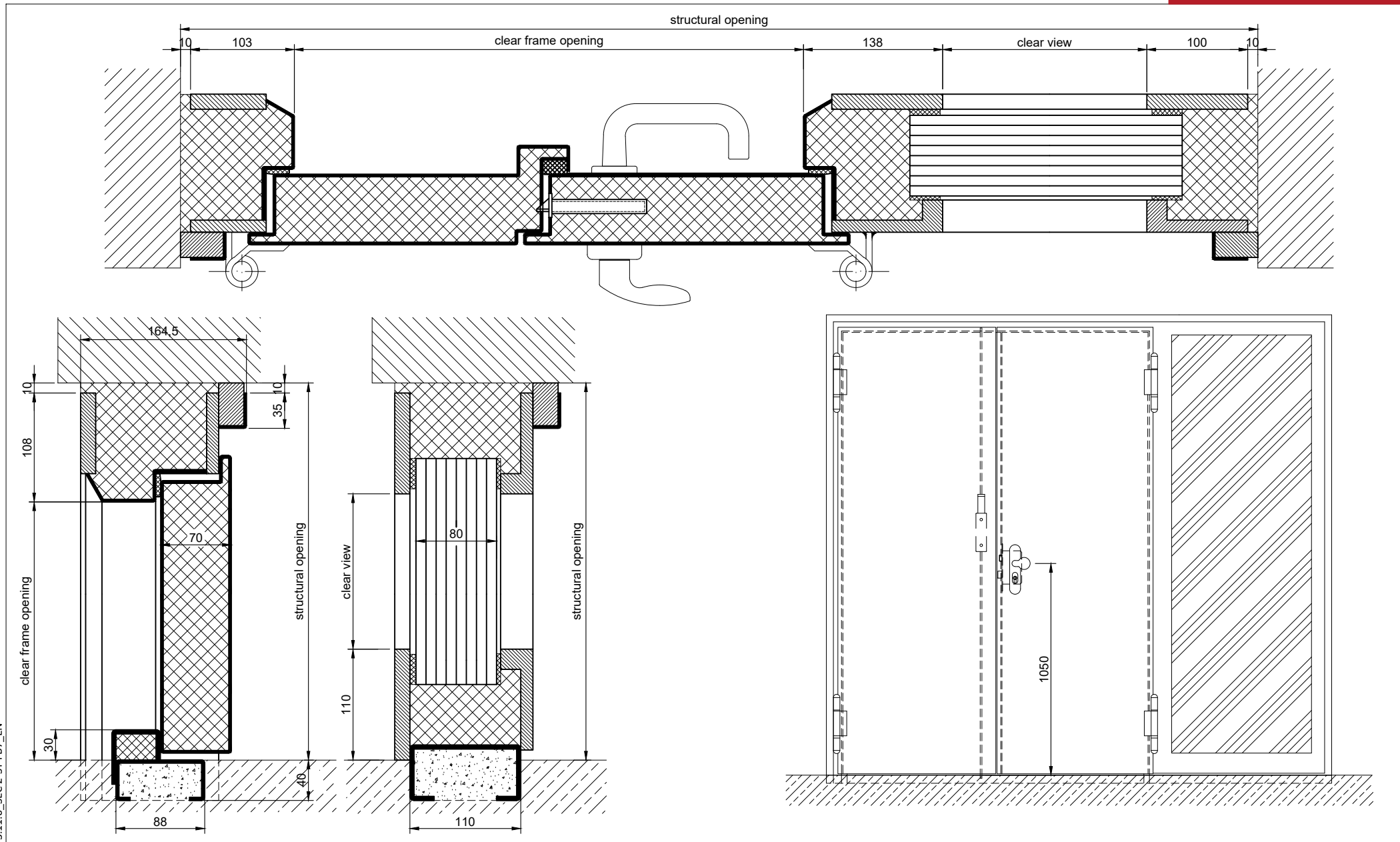
Width from 1375 mm to 1500 mm
Height from 1750 mm to 3000 mm

Technical Specification and Tender Text

Product:	SEC 2 double leaf bullet resistant security door with fixed glazing side panel brand Buchele tested acc. to EN 1522
Door Type:	SEC 2-ST / FB 7 NS
Bullet Resistance:	FB 7 NS
Structural Opening: x mm
Door Leaf:	Double-walled, planar 70 mm thick steel door leaf, three sides rebated with thin rebate. Without bottom stop. Special insulating inserts fully laid-in and glued. Passive leaf with multi-chamber sealing profile in the middle rebate. Securing pin screwed in door leaf rebate.
Threshold:	Floor bracket as separation sill. Surface galvanized and welded to the frame.
Frame Door:	3-sided circumferential rebated block frame with high-quality multi chamber sealing profile adjustable fixed in the three-sided rebate.
Frame Side Panel:	3-sided counter frame attached to the side of the door frame. With BR7 glazing fixed with a 4-sided circumferential glazing frame.
Hinges:	Three-part, height adjustable construction hinges with hinge pin retention and ball bearing spacer ring for smooth door movement.
Fitting:	Active leaf with 2-point security mortise lock with latch lever function acc. to EN 12209 (prepared for installation of a profile cylinder lock, provided by customer). Door handle set in acc. to EN 1906 fixed pivoted synthetic material black in U-shape with rounded long-plate. Passive leaf with concealed shoot bolt lock.
Surface:	Door leaf and frame galvanized und primed with 2K-PUR primer (Very High Solid) similar RAL 7035.

Supplementary Equipment

Glazing:	BR7 single or insulating glazing fixed with profiled steel glazing bars. Minimum border 125 mm on side and top, base 300 mm.
BUCHELE DELUXE:	The exclusive surface coating.



3.11.6_SEC 2-ST_FB7_EN