

Double Leaf PLANE Line Bullet Resistant Security Door

Bullet Resistance **7000 J** **tested acc. to EN 1522**

Optional Audited Additional Functions

- Sound Insulation	up to R_{w,P} 46dB	tested acc. to EN ISO 10140-2
- Burglar Protection	RC2/ RC3/ RC4/ RC5	tested acc. to EN 1627
- Air Tight	up to class 4	tested acc. to EN 1026
- Rain- and Fire-Water Tight	class 6A	tested acc. to EN 1027
- Wind load Resistance	up to class C5	tested acc. to EN 12211
- Blast Resistance	up to 20 kPa	
- Explosion Protection	up to zone 1/21	acc. to EN 1127-1 or ATEX 2014/34/EU
- Stainless Steel		

Range of Dimension

Width from 1000 mm to 3000 mm
Height from 500 mm to 3000 mm

Technical Specification and Tender Text

Product: **PL2 double leaf bullet resistant security door brand Buchele tested acc. to EN 1522**

Door Type: **PLANE Line PL 2 BASIC**

Bullet Resistance: **7000 J**

Structural Opening: **.... x mm**

Door Leaf: Double-walled, planar 70 mm thick steel door leaf without hinge embossing, three sides rebated with thick rebate.
 Special insulating inserts fully laid-in and glued.
 Passive leaf with multi-chamber sealing profile in the middle rebate.
 Securing pin screwed in door leaf rebate.

Threshold: Floor bracket as separation sill. Surface galvanized and welded to the frame.

Frame: 3-sided circumferential rebated corner frame with high-quality multi chamber sealing profile adjustable fixed in the three-sided rebate.

Hinges: Three-part, height adjustable construction hinges with hinge pin retention and ball bearing spacer ring for smooth door movement.

Fitting: **Active leaf** with 2-point security mortise lock with latch lever function acc. to EN 12209 (prepared for installation of a profile cylinder lock, provided by customer).
 Door handle set in acc. to EN 1906 fixed pivoted stainless steel in U-shape with rounded long-plate.
Passive leaf with concealed shoot bolt lock.

Surface: Door leaf and frame galvanized und primed with 2K-PUR primer (Very High Solid) similar RAL 7035.

Alternative: PLANE Line PL 2 PREMIUM with flush mounted optics

- Frame:** 3-sided circumferential rebated PLANE Line special corner frame for flush mounted optics on hinge side.
With high-quality multi-chamber sealing profile adjustable fixed in the three-sided groove.
- Hinges:** Object hinges type VB-3D 160 adjustable in three dimensions.
Fixture element with slide bearings inside for smooth door movement.

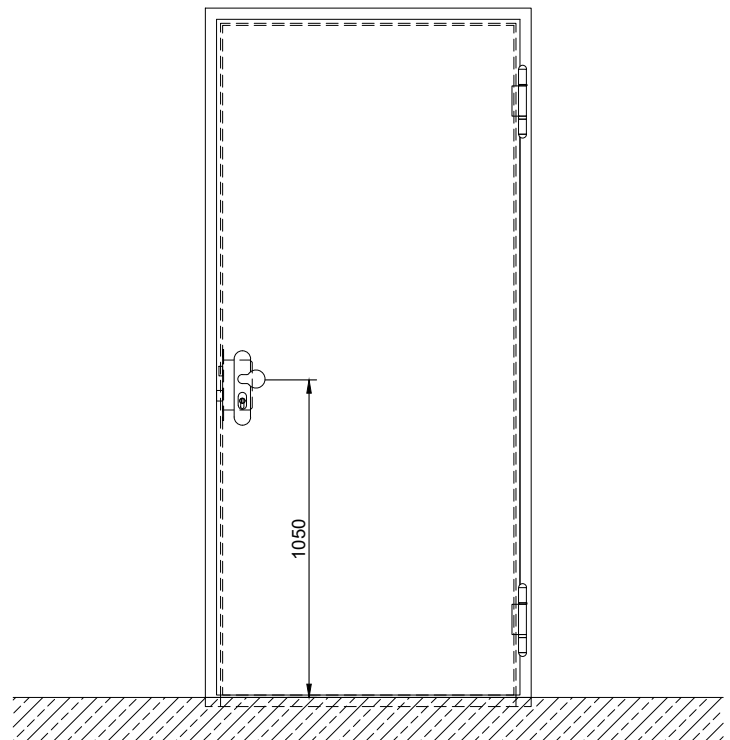
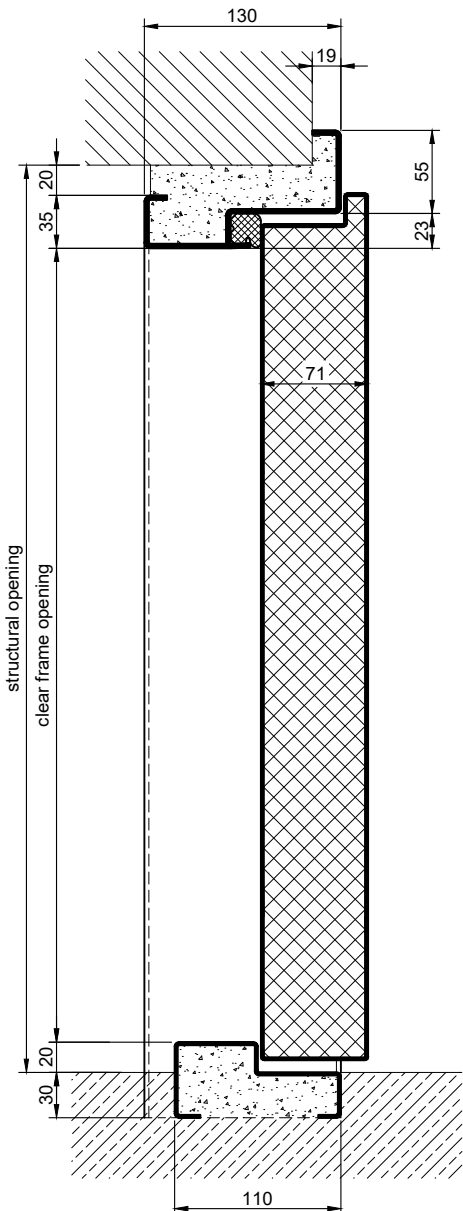
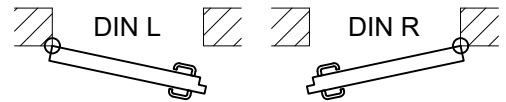
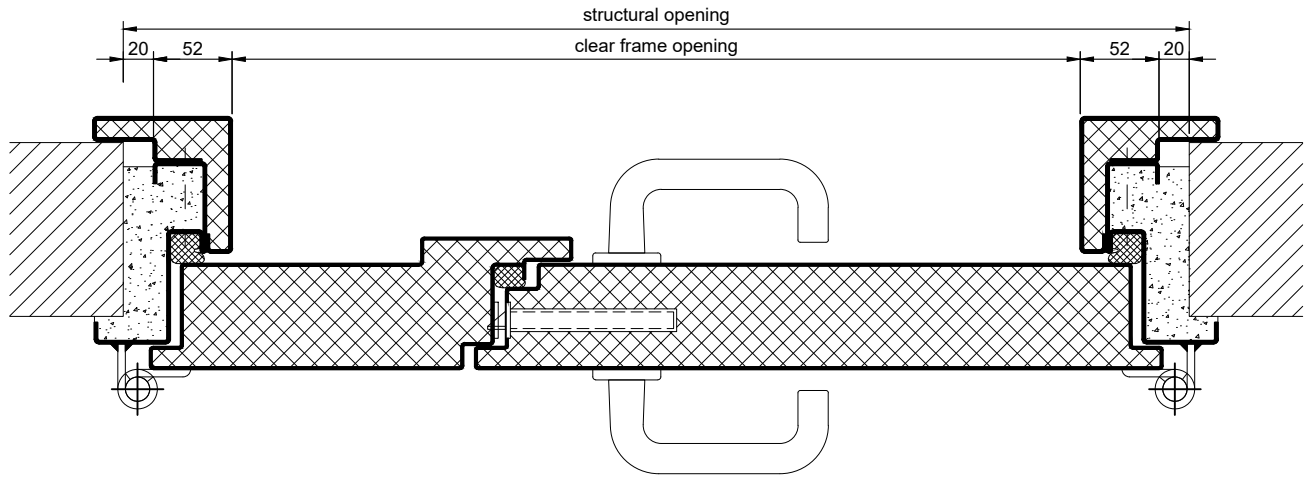
Alternativ: PLANE Line PL 2 SUPERIOR mit flächenbündiger Optik

- Frame:** 3-sided circumferential rebated PLANE Line special corner frame for flush mounted optics on hinge side.
With high-quality multi-chamber sealing profile adjustable fixed in the three-sided groove.
- Hinges:** Concealed hinge system adjustable in three dimensions.

Supplementary Equipment

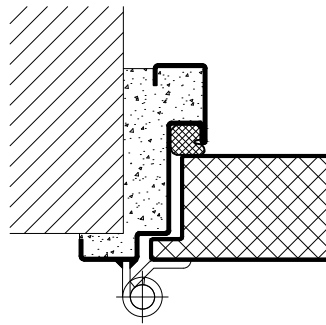
- Bullet Splash:** Fully glued onto the door leaf and frame.
Sliding hatch to protect the door handle on the shooting lane side.
- Stainless Steel:** Material 1.4301 (V2A) or 1.4404 (V4A),
Surface mill finish or brushed.
- BUCHELE DELUXE:** The exclusive surface coating.

BASIC - Version



PREMIUM - Version

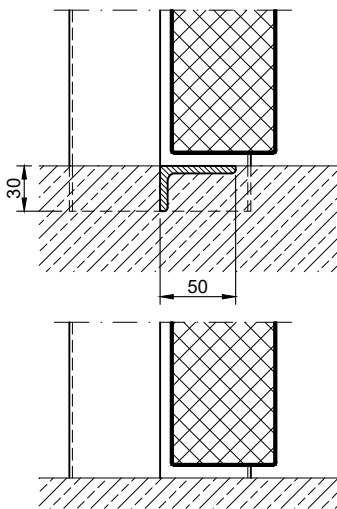
construction hinges



Thresholds

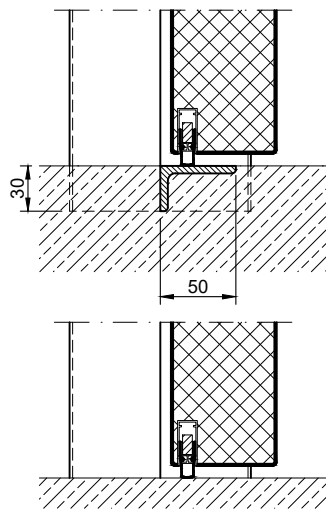
separation sill

information:
With this version there is **NO** bullet resistance in the threshold area!

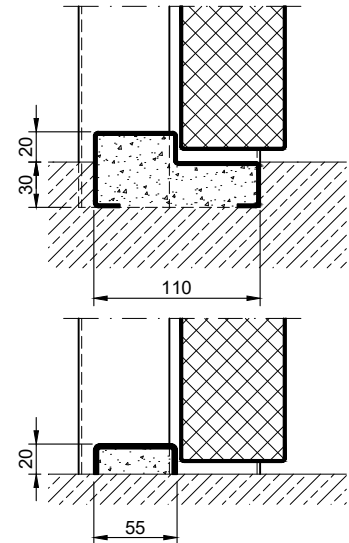


drop seal

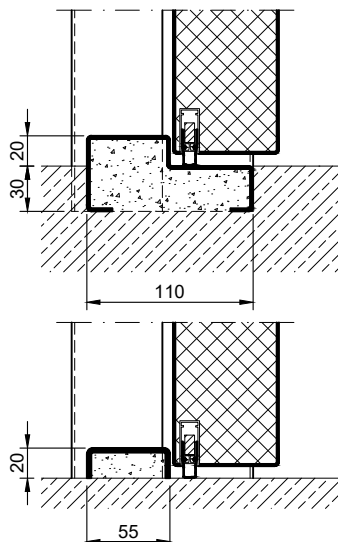
information:
With this version there is **NO** bullet resistance in the threshold area!



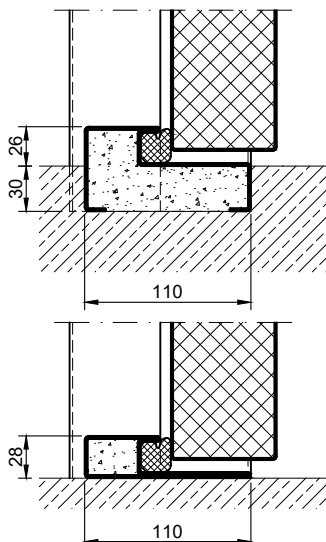
stop sill without seal



stop sill with drop seal



stop sill with seal



full sill

