

Double Leaf PLANE Line FB4-NS Bullet Resistant Security Door

Bullet Resistance **FB 6 NS** **tested acc. to EN 1522**

Optional Audited Additional Functions

| | | |
|------------------------------|--|--------------------------------------|
| - Sound Insulation | up to $R_{w,P}$ 54dB | tested acc. to EN ISO 10140-2 |
| - Burglar Protection | RC2/ RC3/ RC4/ RC5 | tested acc. to EN 1627 |
| - Air Tight | up to class 4 | tested acc. to EN 1026 |
| - Rain- and Fire-Water Tight | class 6A | tested acc. to EN 1027 |
| - Wind load Resistance | up to class C5 | tested acc. to EN 12211 |
| - Blast Resistance | up to 20 kPa | tested acc. to EN 13124-1 |
| - Explosion Protection | up to zone 1/21 | acc. to EN 1127-1 or ATEX 2014/34/EU |
| - Stainless Steel | | |

Range of Dimension

Width from 1000 mm to 3000 mm
Height from 500 mm to 3000 mm

Technical Specification and Tender Text

| | |
|----------------------------|--|
| Product: | PL2 double leaf bullet retardant security door brand Buchele tested acc. to EN 1522 |
| Door Type: | PLANE Line PL 2 BASIC |
| Bullet Resistance: | FB 6 NS |
| Structural Opening: | x mm |
| Door Leaf: | Double-walled, planar 70 mm thick steel door leaf without hinge embossing, three sides rebated with thick rebate. Special insulating inserts fully laid-in and glued. Passive leaf with multi-chamber sealing profile in the middle rebate. Securing pin screwed in door leaf rebate. |
| Threshold: | Floor bracket as separation sill. Surface galvanized and welded to the frame. |
| Frame: | 3-sided circumferential rebated corner frame with high-quality multi chamber sealing profile adjustable fixed in the three-sided rebate. |
| Hinges: | Three-part, height adjustable construction hinges with hinge pin retention and ball bearing spacer ring for smooth door movement. |
| Fitting: | Active leaf with 2-point security mortise lock with latch lever function acc. to EN 12209 (prepared for installation of a profile cylinder lock, provided by customer). Door handle set in acc. to EN 1906 fixed pivoted synthetic material black in U-shape with rounded long-plate. Passive leaf with concealed shoot bolt lock. |
| Surface: | Door leaf and frame galvanized und primed with 2K-PUR primer (Very High Solid) similar RAL 7035. |

Alternative: PLANE Line PL 2 PREMIUM with flush mounted optics

Frame: 3-sided circumferential rebated PLANE Line special corner frame for flush mounted optics on hinge side.
With high-quality multi-chamber sealing profile adjustable fixed in the three-sided groove.

Hinges: Object hinges type VB-3D 160 adjustable in three dimensions.
Fixture element with slide bearings inside for smooth door movement.

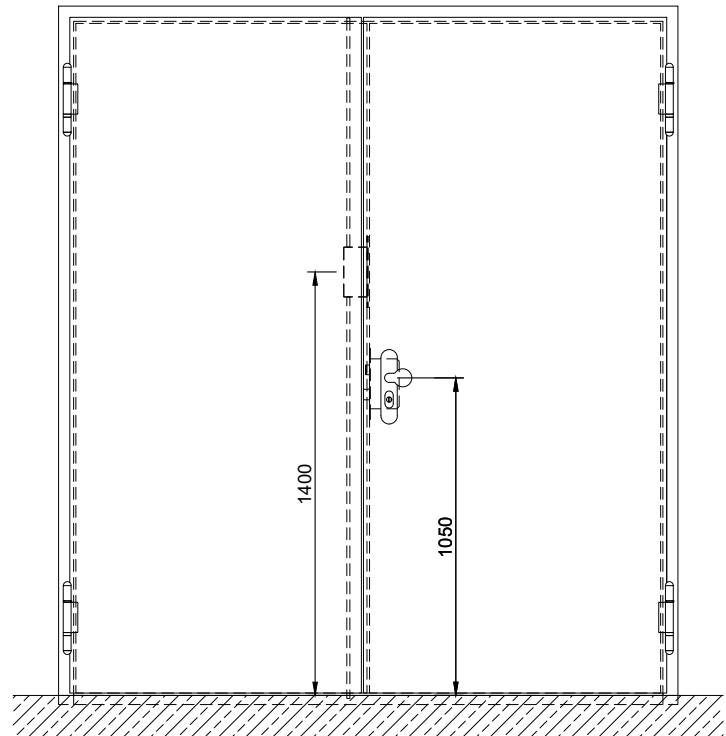
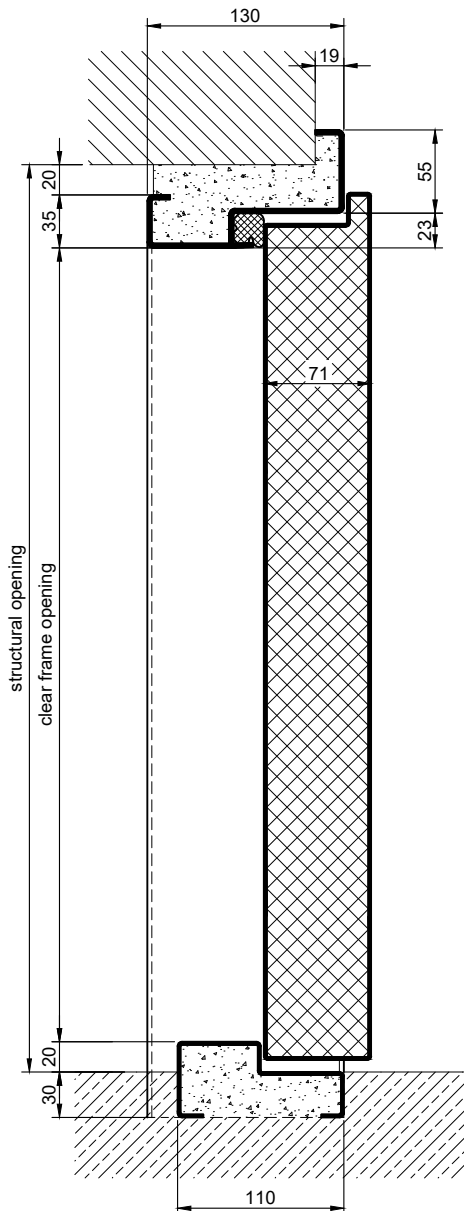
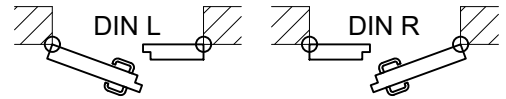
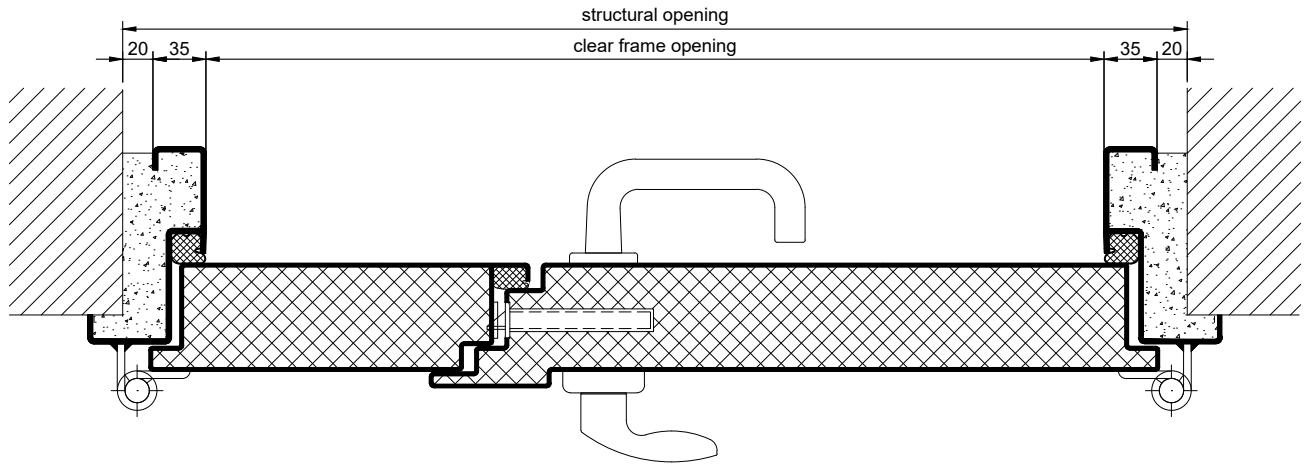
Supplementary Equipment

Glazing: BR6 single or insulating glazing fixed with profiled steel glazing bars.
Minimum border 125 mm on side and top, base 300 mm.

Stainless Steel: Material 1.4301 (V2A) or 1.4404 (V4A),
Surface mill finish or brushed.

BUCHELE DELUXE: The exclusive surface coating.

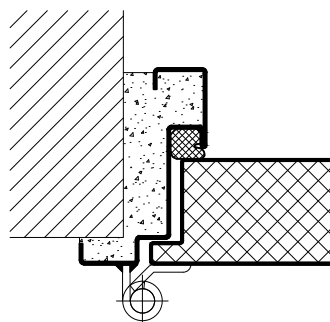
BASIC - Version



3.11.2. PLANE LINE PL 2 FB6_EN

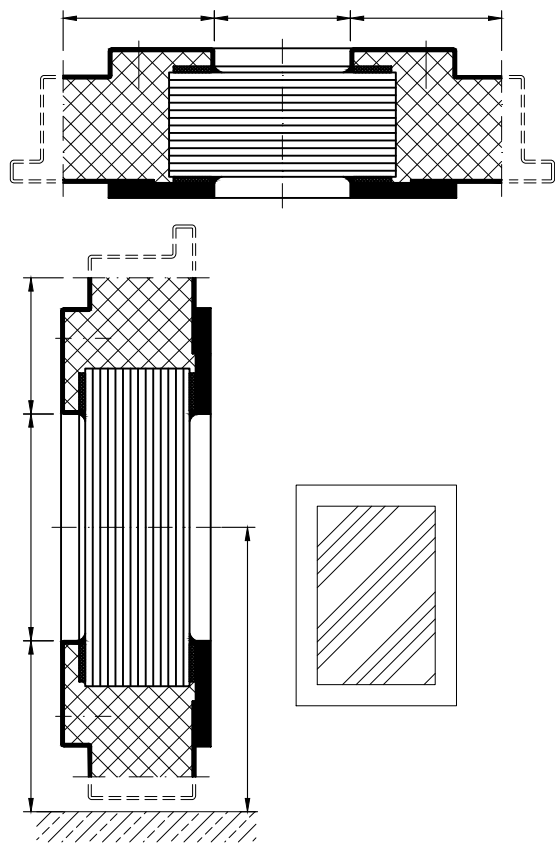
PREMIUM - Version

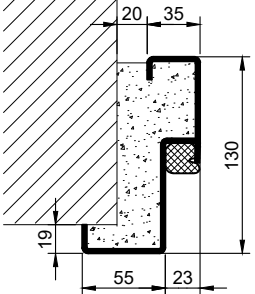
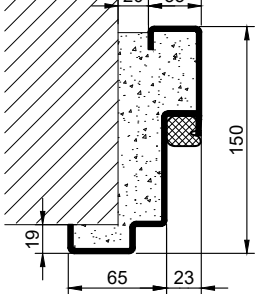
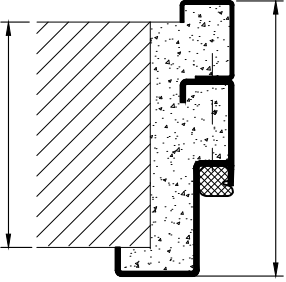
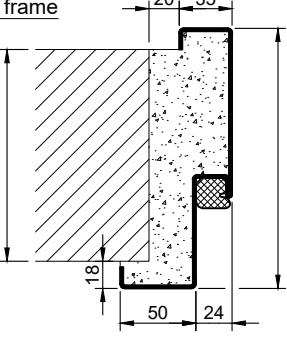
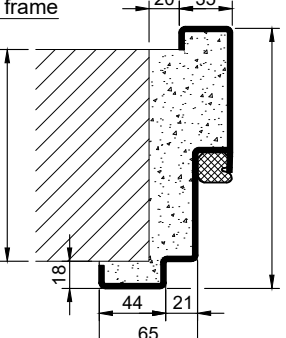
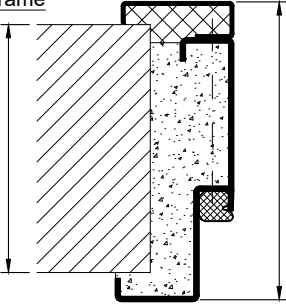
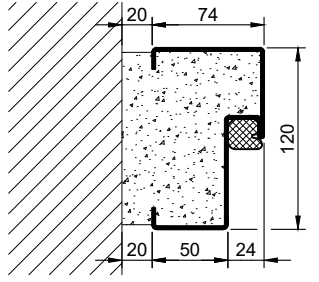

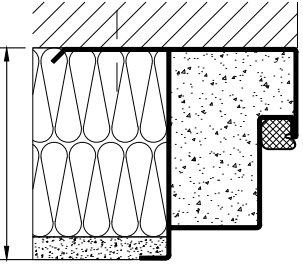
construction hinges



Options

glazing

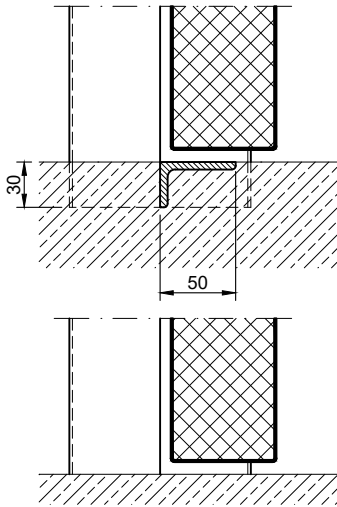


| Frames BASIC | Frames PREMIUM/SUPERIOR | Variants (illustration BASIC) |
|---|---|---|
| <p>corner frame</p>  | <p>corner frame</p>  | <p>corner frame with additional frame</p>  |
| <p>encasing frame</p>  | <p>encasing frame</p>  | <p>encasing frame with counter frame</p>  |
| <p>block frame</p>  | <p>block frame</p>  | <p>jutted block frame</p>  |
| | | |
| | | |

Thresholds

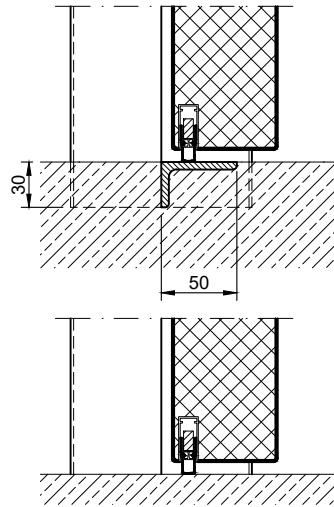
separation sill

information:
With this version there is **NO** bullet resistance in the threshold area!

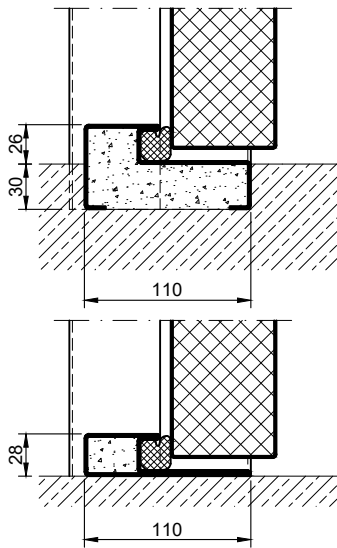


drop seal

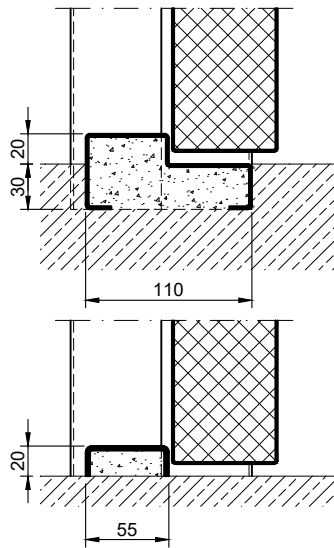
information:
With this version there is **NO** bullet resistance in the threshold area!



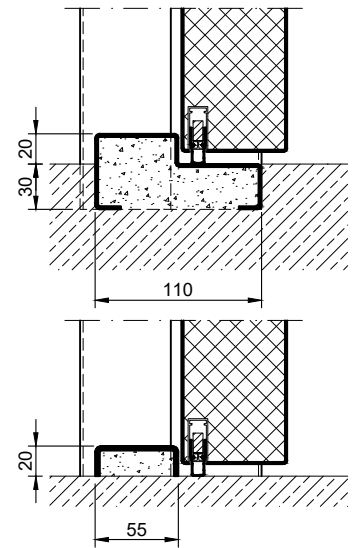
stop sill with seal



stop sill without seal



stop sill with drop seal



full sill

