

### Single Leaf PLANE Line RC2 Burglar Resistant Security Door

**Burglar Protection**                      **RC2**                      **tested acc. to EN 1627**

#### Optional Audited Additional Functions

- Sound Insulation	<b>up to R<sub>w,P</sub> 54dB</b>	tested acc. to EN ISO 10140-2
- Bullet Resistance	<b>FB4/FB6-NS</b>	tested acc. to EN 1522
- Air Tight	<b>up to class 4</b>	tested acc. to EN 1026
- Rain- and Fire-Water Tight	<b>class 6A</b>	tested acc. to EN 1027
- Wind load Resistance	<b>up to class C5</b>	tested acc. to EN 12211
- Blast Resistance	<b>up to 20 kPa</b>	tested acc. to EN 13124-1
- Explosion Protection	<b>up to zone 1/21</b>	acc. to EN 1127-1 or ATEX 2014/34/EU
- Stainless Steel		

#### Range of Dimension

**Width** from 500 mm to 1500 mm  
**Height** from 500 mm to 3000 mm

#### Technical Specification and Tender Text

<b>Product:</b>	<b>PL1 single leaf security door brand Buchele tested acc. to EN 1627</b>
<b>Door Type:</b>	<b>PLANE Line PL 1 BASIC</b>
<b>Resistance Class:</b>	<b>RC2</b>
<b>Structural Opening:</b>	<b>.... x .... mm</b>
<b>Door Leaf:</b>	Double-walled, planar 70 mm thick steel door leaf without hinge embossing, three sides rebated with thick rebate. Without bottom stop. Special insulating inserts fully laid-in and glued. Securing pin screwed in door leaf rebate.
<b>Threshold:</b>	Floor bracket as separation sill. Surface galvanized and welded to the frame.
<b>Frame:</b>	3-sided circumferential rebated corner frame High-quality multi chamber sealing profile adjustable fixed in the three-sided groove.
<b>Hinges:</b>	Three-part, height adjustable construction hinges with hinge pin retention and ball bearing spacer ring for smooth door movement.
<b>Fitting:</b>	2-point security mortise lock with latch lever function acc. to EN 12209 (prepared for installation of a profile cylinder lock, provided by customer) Security door handle set in acc. to EN 1906 fixed pivoted, stainless steel, in U-shape with rounded long-plate.
<b>Surface:</b>	Door leaf and frame galvanized und primed with 2K-PUR primer (Very High Solid) similar RAL 7035.

**Alternative: PLANE Line PL 301 PREMIUM with flush mounted optics**

- Frame:** 3-sided circumferential rebated PLANE Line special corner frame for flush mounted optics on hinge side.  
High-quality multi-chamber sealing profile adjustable fixed in the three-sided groove.
- Hinges:** Object hinges type VB-3D 160 adjustable in three dimensions.  
Fixture element with slide bearings inside for smooth door movement.

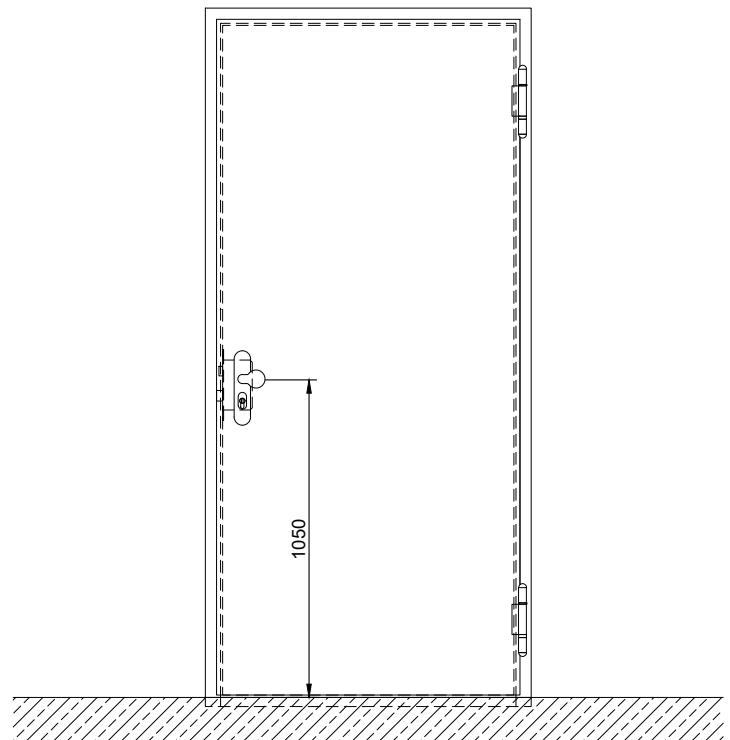
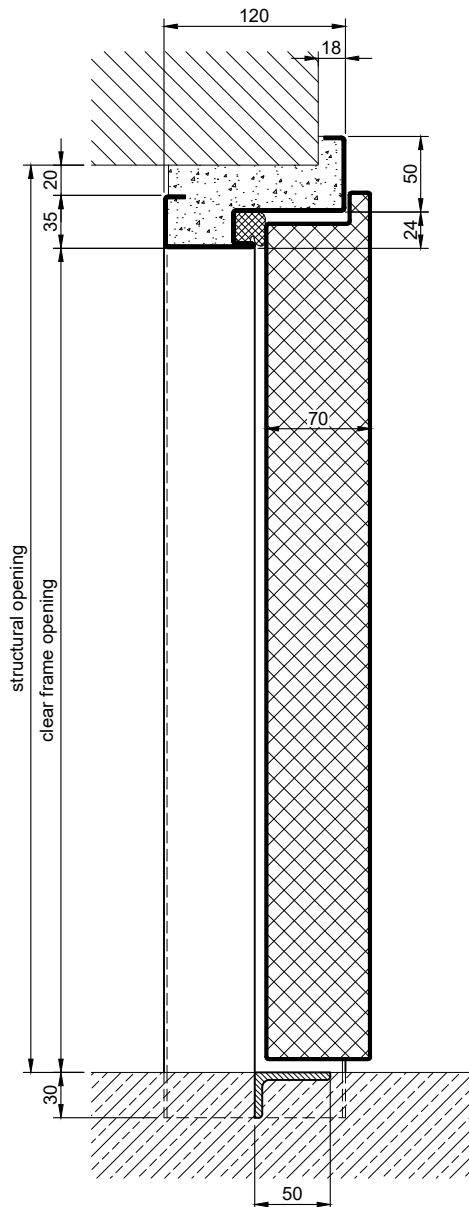
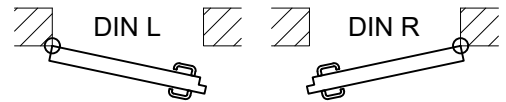
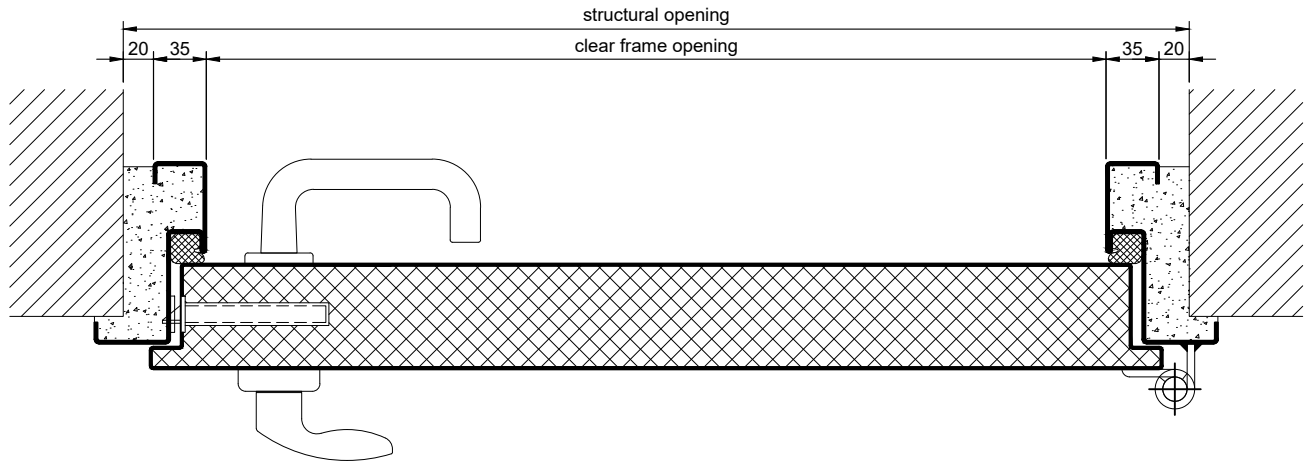
**Alternative: PLANE Line PL 1 SUPERIOR with flush mounted optics**

- Frame:** 3-sided circumferential rebated PLANE Line special corner frame for flush mounted optics on hinge side.  
High-quality multi-chamber sealing profile adjustable fixed in the three-sided groove.
- Hinges:** Concealed hinge system adjustable in three dimensions.

**Supplementary Equipment**

- Glazing:** P4A single or insulating glazing fixed with profiled glazing bars.  
Minimum border 125 mm on side and top, base 300 mm.
- Ventilation Grill:** Burglar resistant and poke proof ventilation grill.  
With galvanized bird screen 10x10 mm inside.
- Stainless Steel:** Material 1.4301 (V2A) or 1.4404 (V4A),  
Surface mill finish or brushed.
- BUCHELE DELUXE:** The exclusive surface coating.

### BASIC - Version

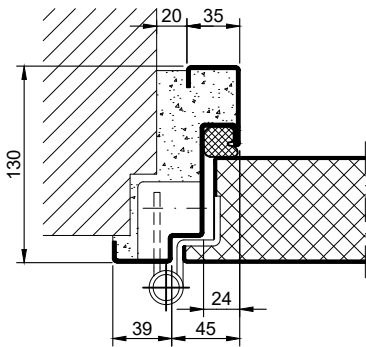


3.0.1\_PLANE LINE PL 1 RC2\_EN

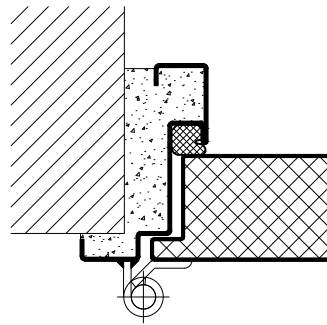
technical modifications reserved - edition 06/2024

### PREMIUM - Version

object hinges VB-3D

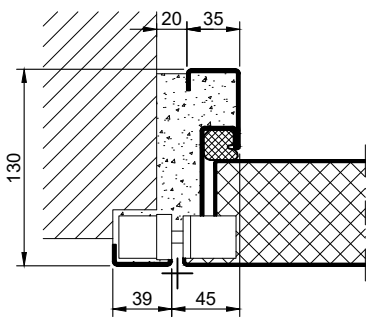


construction hinges



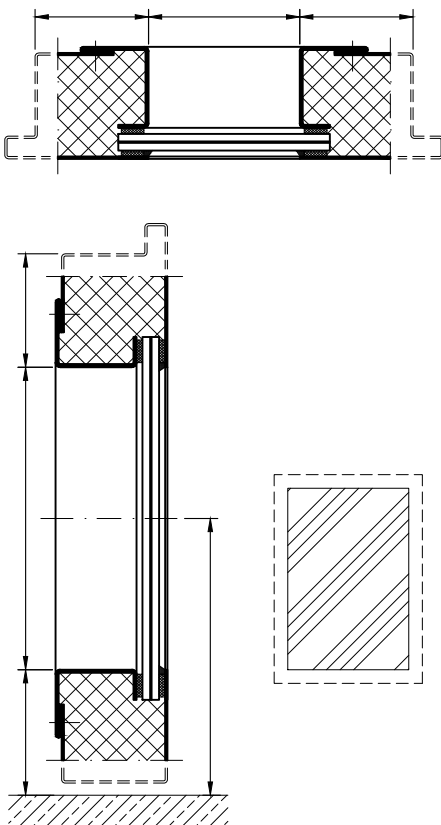
### SUPERIOR - Version

concealed hinges

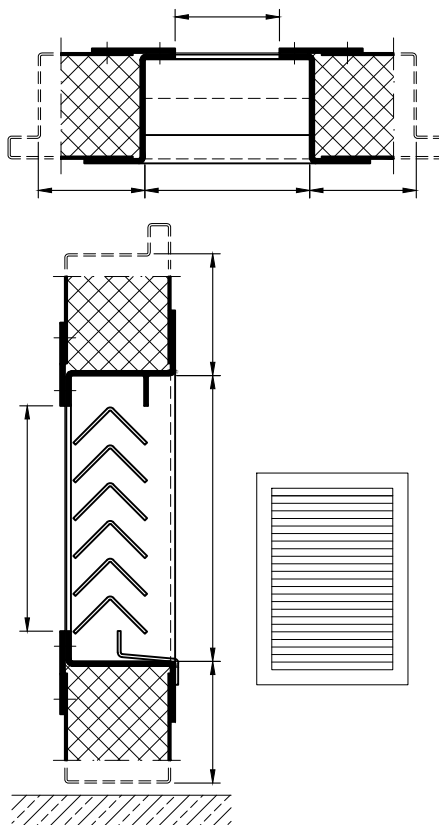


### Options

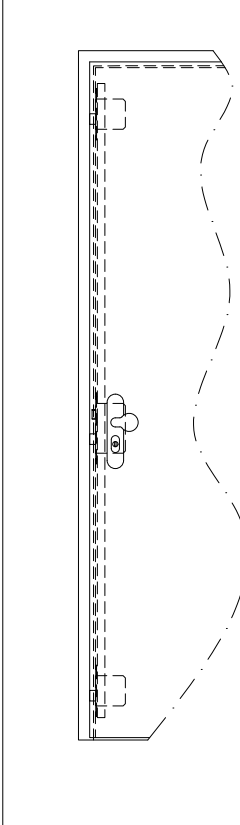
glazing



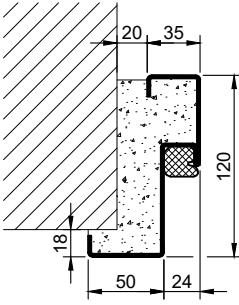
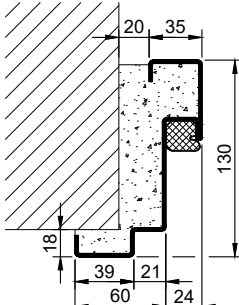
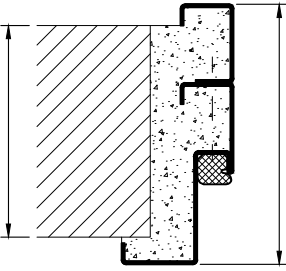
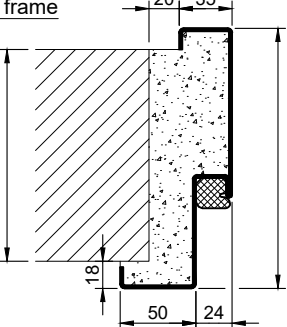
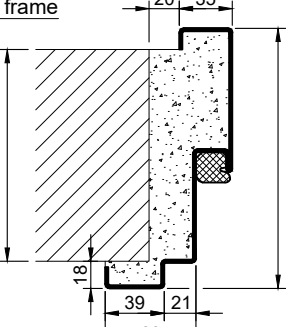
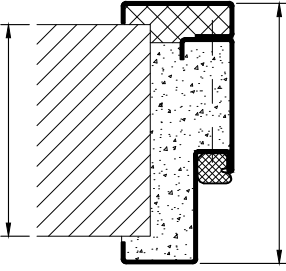
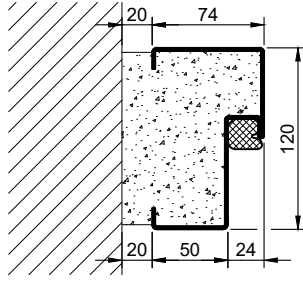

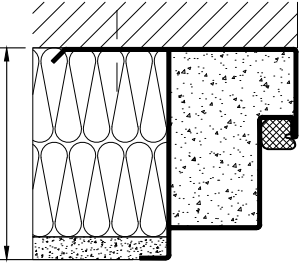
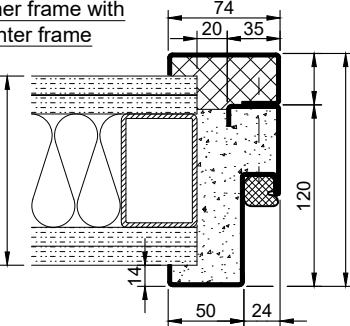
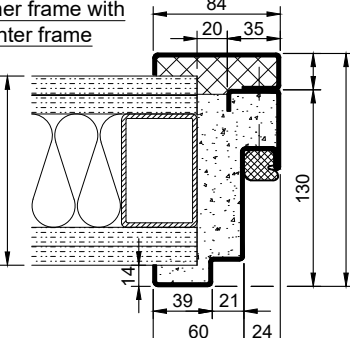
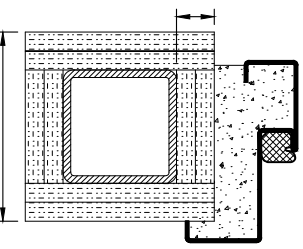
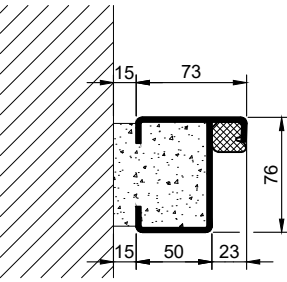
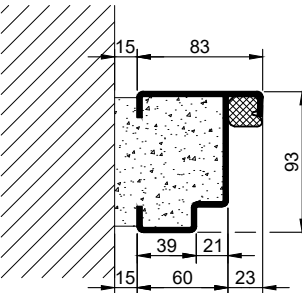
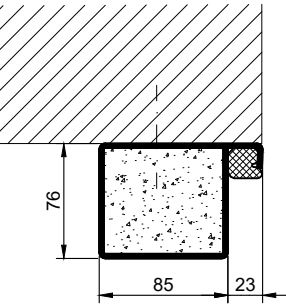
ventilation grill



3-point locking system

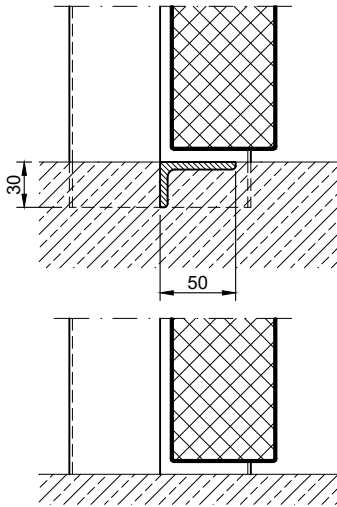


3.0.1\_PLANE LINE PL 1 RC2\_EN

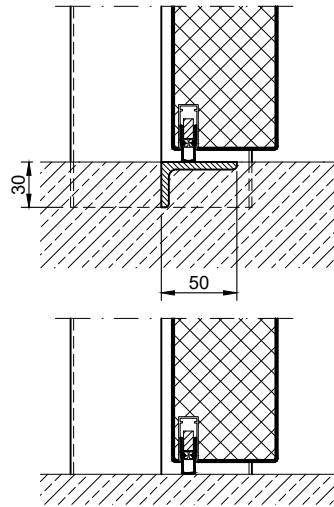
Frames BASIC	Frames PREMIUM / SUPERIOR	Variants (illustration BASIC)
<p>corner frame</p> 	<p>corner frame</p> 	<p>corner frame with additional frame</p> 
<p>encasing frame</p> 	<p>encasing frame</p> 	<p>encasing frame with counter frame</p> 
<p>block frame</p> 	<p>block frame</p> 	<p>juted block frame</p> 
<p>corner frame with counter frame</p> 	<p>corner frame with counter frame</p> 	<p>corner frame at support / pillar</p> 
<p>profile block frame</p> 	<p>profile block frame</p> 	<p>pre-wall frame</p> 

### Thresholds

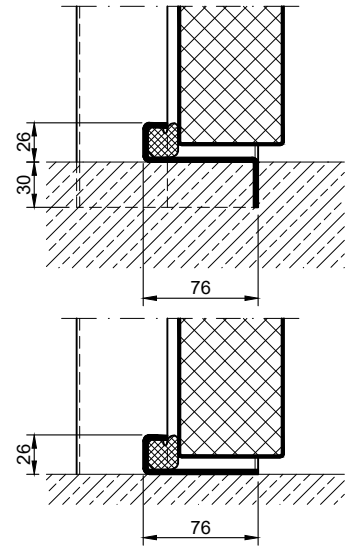
separation sill



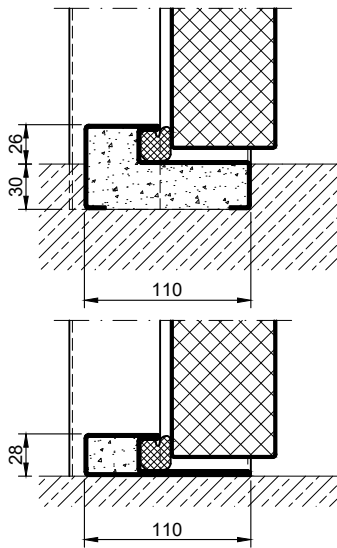
drop seal



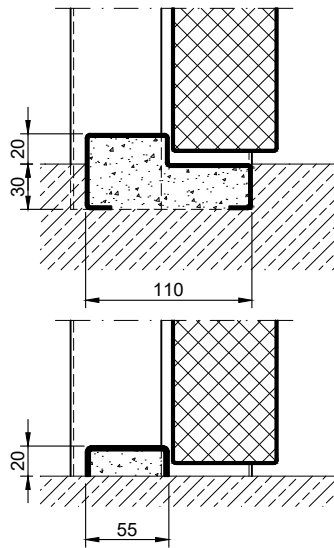
stop sill with seal



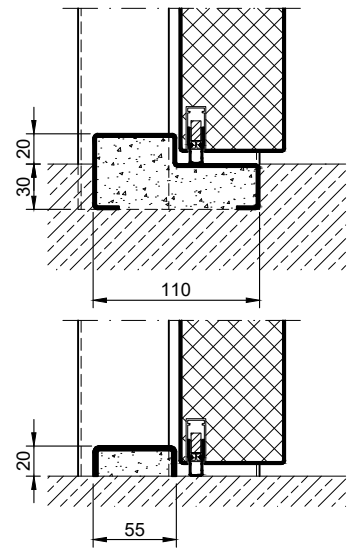
stop sill with seal



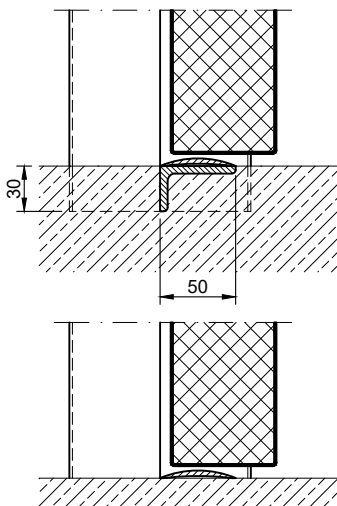
stop sill without seal



stop sill with drop seal



separation sill with half-round strip



full sill

