

Single Leaf Acoustic Sliding Gate

Sound Insulation**R_{w,P} 52 dB****measuring was made in the built-in and functional condition on the building site**

Range of Dimension

Width from 1000 mm to 4000 mm**Height from 2000 mm to 4000 mm**

Technical Specification and Tender Text

Product:	SST single leaf acoustic sliding gate brand Buchele tested acc. to EN ISO 10140-2
Door Type:	SST 52-1
Sound Insulation R_{w,P}	52 dB
Structural Opening: x mm
Door Leaf:	Double-walled, planar 145 mm thick steel gate. Without bottom stop. Special insulating inserts fully laid-in and glued. 2 pieces of automatic heavy-duty drop sealing system to the floor. Gate leaf in element construction. Without lock.
Frame:	2-sided circumferential frame screwed on the wall with integrated multi-chamber sealing system, adjustable fixed in the rebate. Additional absorber layer out of perforated plate underlaid with fleece and mineral wool, visible screwed to the frame. 220mm deep inlet profile with double sealing profile and absorber screwed on the wall.
Fitting:	Gate leaf with heavy-duty handles on both sides. The closure is made with a special lock, with its locking wedge the gate leaf is pressed against the seals in inlet- and frame profile. The gate leaf is guided in a C-sliding track upon the gate opening with ball bearing mounted guide rollers. This sliding track is covered with a folded steel sheet over the entire length.
Surface:	Gate leaf and frame galvanized und primed with 2K-PUR primer (Very High Solid) similar RAL 7035.

Supplementary Equipment

Wicket Door:

Double-walled, planar 95 mm thick steel door, four sides rebated with thick rebate and adjustable fixed sealing profile in the rebate.

With bottom stop.

Special insulating inserts fully laid-in and glued.

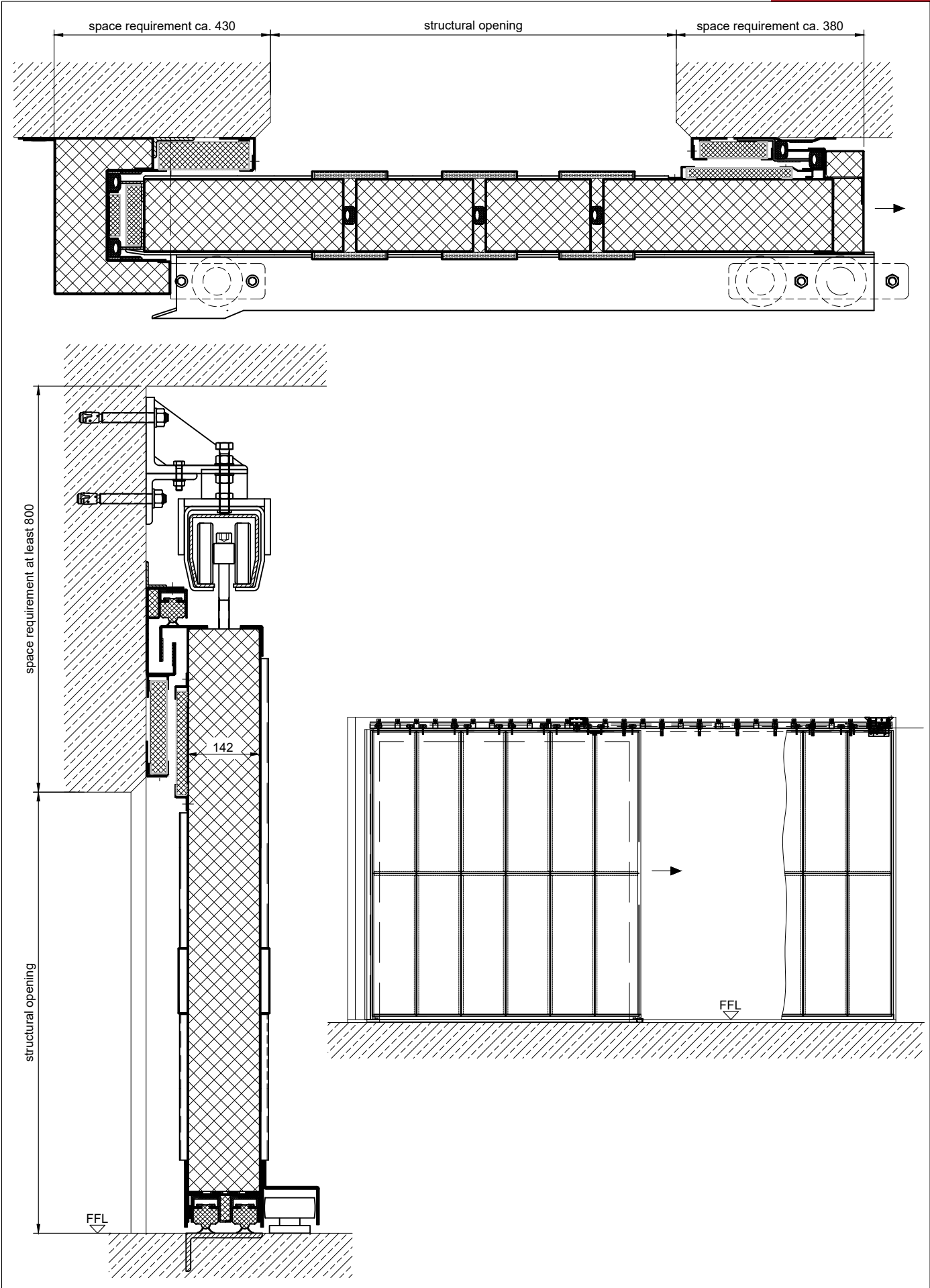
Heavy-duty worm clamping locking device with solid locking worm, spring-suspended lock latch and automatic maloperation interlock system.

Lock prepared for installation of a profile cylinder, provided by customer.

Reinforced clamping lever pair, ergonomically shaped, fixed pivoted on squared long platers, visible screwed to the door leaf. Surface stainless steel with black lever handle area.

Electric Drive:

Optionally as support for opening or for closing.



2.40.3_SST 52-1_EN

technical modifications reserved - edition 05/2024