

Single Leaf ROTARY Line Vertically Pivoted Acoustic Door

Sound Insulation**R_{w,P} 42 dB****tested acc. to EN ISO 10140-2**

Optional Audited Additional Functions

- Burglar Protection	RC2/RC3	tested acc. to EN 1627
- Bullet Resistance	FB4-NS	tested acc. to EN 1522
- Air Tight	up to class 3	tested acc. to EN 1026
- Rain- and Fire-Water Tight	class 2B	tested acc. to EN 1027
- Wind load Resistance	class C5	tested acc. to EN 12211
- Blast Resistance	up to 2 kPa	tested acc. to EN 13124-1
- Explosion Protection	up to zone 1/21	acc. to EN 1127-1 or ATEX 2014/34/EU
- Stainless Steel		

Range of Dimension

Width from 1000 mm to 1750 mm
Height from 1750 mm to 3500 mm

Technical Specification and Tender Text

Product:	RL 1 single leaf vertically pivoted steel door brand Buchele tested acc. to EN 1634-1 und EN ISO 10140-2
Door Type:	ROTARY Line RL 301
Sound Insulation R_{w,P}	42 dB
Structure Opening: x mm
Door Leaf:	Double-walled, planar 93 mm thick steel door leaf, two sides rebated with thick rebate and adjustable fixed sealing profile in rebate. Without bottom stop. Special insulating inserts fully laid-in and glued. Drop sealing system in bottom part of the door. Lift sealing system in top part of the door.
Threshold:	Floor bracket as separation sill. Surface stainless steel and welded to the frame.
Frame:	3-sided circumferential rebated block frame with visible black coated intumescent material in rebate. High-quality multi chamber sealing profile adjustable fixed in the two-sided groove.
Hinges:	Concealed hinge system integrated in frame and floor, ball bearing mounted for smart door movement. The door leaf rotates around a vertical axis.
Door Closer:	Concealed slide rail door closer system acc. to EN 1154 integrated in frame and door leaf.

Fitting: Mortise lock with latch lever function acc. to EN 12209 (prepared for installation of a profile cylinder lock, provided by customer).
Door handle set in acc. to EN 1906 fixed pivoted synthetic material black in U-shape with rounded short-plate.

Surface: Door leaf and frame galvanized und primed with 2K-PUR primer (Very High Solid) similar RAL 7035.

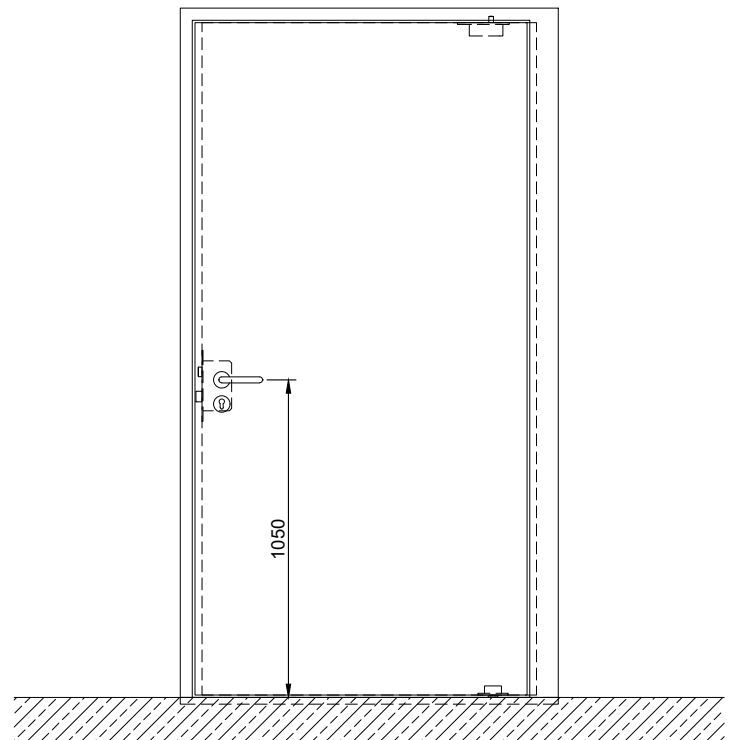
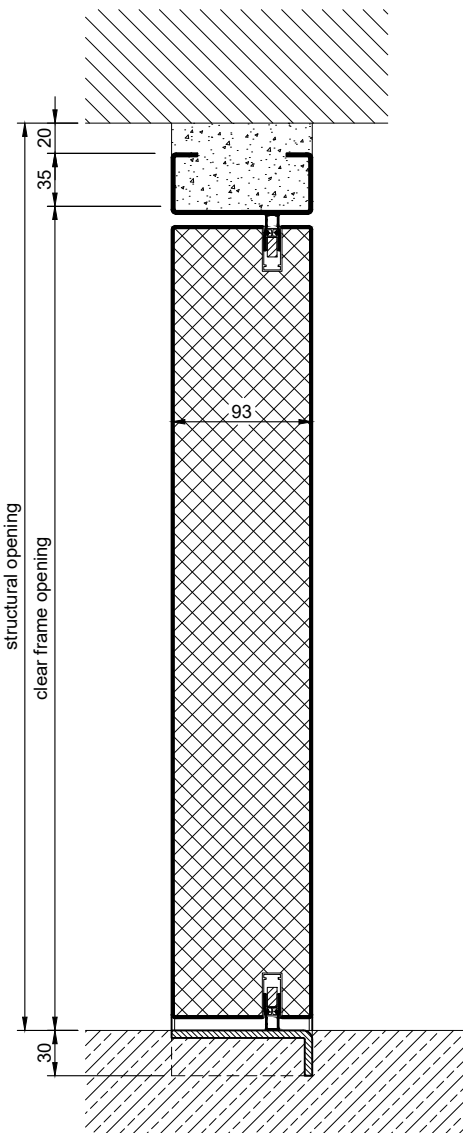
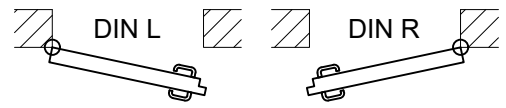
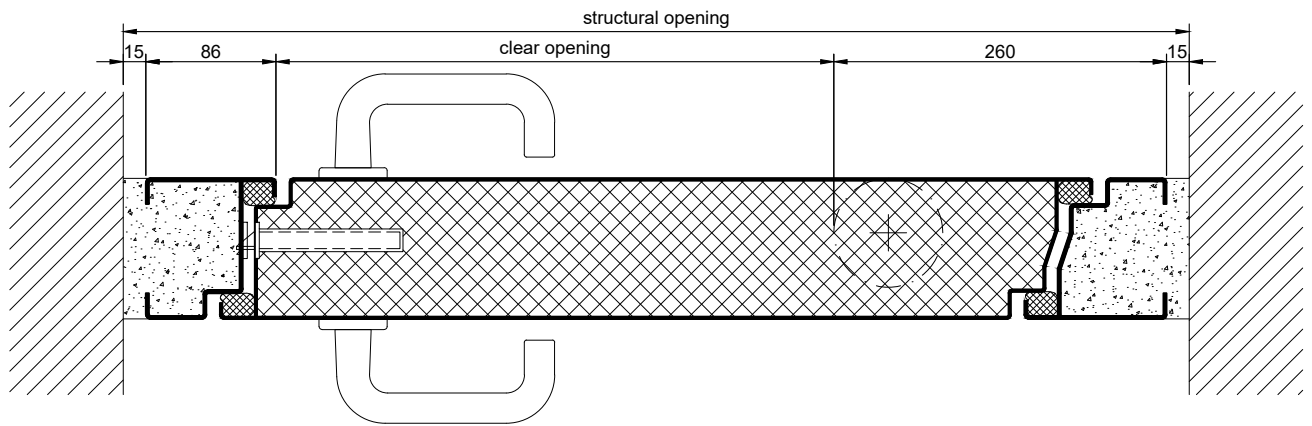
Supplementary Equipment

Standard Glazing: Single glazing or insulating glazing fixed with profiled and visible screwed steel glazing bars.
Minimum border 125 mm on side and top, base 300 mm.

Flush Glazing: Special glazing flush mounted with outer edge of door leaf on hinge side and opposite hinge side.
Edge enamelling and permanent elastic glazing joint in colour black RAL 9004.
Minimum border 125 mm on side and top, base 300 mm.

Stainless Steel: Material 1.4301 (V2A) or 1.4404 (V4A),
Surface mill finish or brushed.

BUCHELE DELUXE: The exclusive surface coating.



2.1.1.2_ROTARY LINE RL 1_42DB_EN

technical modifications reserved - edition 05/2024