

## Double Leaf PLANE Line Acoustic Door

**Sound Insulation****R<sub>w,P</sub> 51 dB****tested acc. to EN ISO 10140-2**

### Optional Audited Additional Functions

- Burglar Protection	<b>RC2/RC3/RC4/RC5</b>	tested acc. to EN 1627
- Bullet Resistance	<b>FB4/FB6-NS</b>	tested acc. to EN 1522
- Air Tight	<b>up to class 4</b>	tested acc. to EN 1026
- Rain- and Fire-Water Tight	<b>class 6A</b>	tested acc. to EN 1027
- Wind Load Resistance	<b>up to class C5</b>	tested acc. to EN 12211
- Blast Resistance	<b>up to 20 kPa</b>	tested acc. to EN 13124-1
- Explosion Protection	<b>up to zone 1/21</b>	acc. to EN 1127-1 or ATEX 2014/34/EU
- Stainless Steel		

### Range of Dimension

**Width** from 1000 mm to 3000 mm  
**Height** from 500 mm to 3000 mm

### Technical Specification and Tender Text

<b>Product:</b>	<b>PL 2 double leaf acoustic door</b> <b>brand Buchele tested acc. to EN ISO 10140-2</b>
<b>Door Type:</b>	<b>PLANE Line PL 2 BASIC</b>
<b>Sound Insulation R<sub>w,P</sub></b>	<b>51 dB</b>
<b>Structural Opening:</b>	<b>.... x .... mm</b>
<b>Door Leaf:</b>	Double-walled, planar 70 mm thick steel door without hinge embossing, three sides rebated with thick rebate Without bottom stop. Special insulating inserts fully laid-in and glued. Passive leaf with multi-chamber sealing profile in the middle rebate. Drop sealing system.
<b>Threshold:</b>	Floor bracket as separation sill. Surface galvanized and welded to the frame.
<b>Frame:</b>	3-sided circumferential rebated corner frame. High-quality multi chamber sealing profile adjustable fixed in the three-sided groove.
<b>Hinges:</b>	Three-part, height adjustable construction hinges with hinge pin retention and ball bearing spacer ring for smooth door movement.
<b>Fitting:</b>	<b>Active leaf</b> with mortise lock with latch lever function acc. to EN 12209 (prepared for installation of a profile cylinder lock, provided by customer). Door handle set in acc. to EN 1906 fixed pivoted synthetic material black in U-shape with rounded short-plate. <b>Passive leaf</b> with concealed shoot bolt lock.
<b>Surface:</b>	Door leaf and frame galvanized und primed with 2K-PUR primer (Very High Solid) similar RAL 7035.

**Alternative: PLANE Line PL 2 PREMIUM with flush mounted optics**

**Frame:** 3-sided circumferential rebated PLANE Line special corner frame for flush mounted optics on hinge side.  
High-quality multi-chamber sealing profile adjustable fixed in the three-sided groove.

**Hinges:** Three-part, height adjustable construction hinges with hinge pin retention and ball bearing spacer ring for smooth door movement.

**Alternative: PLANE Line PL 2 SUPERIOR with flush mounted optics**

**Frame:** 3-sided circumferential rebated PLANE Line special corner frame for flush mounted optics on hinge side.  
High-quality multi-chamber sealing profile adjustable fixed in the three-sided groove.

**Hinges:** Concealed hinge system adjustable in three dimensions.

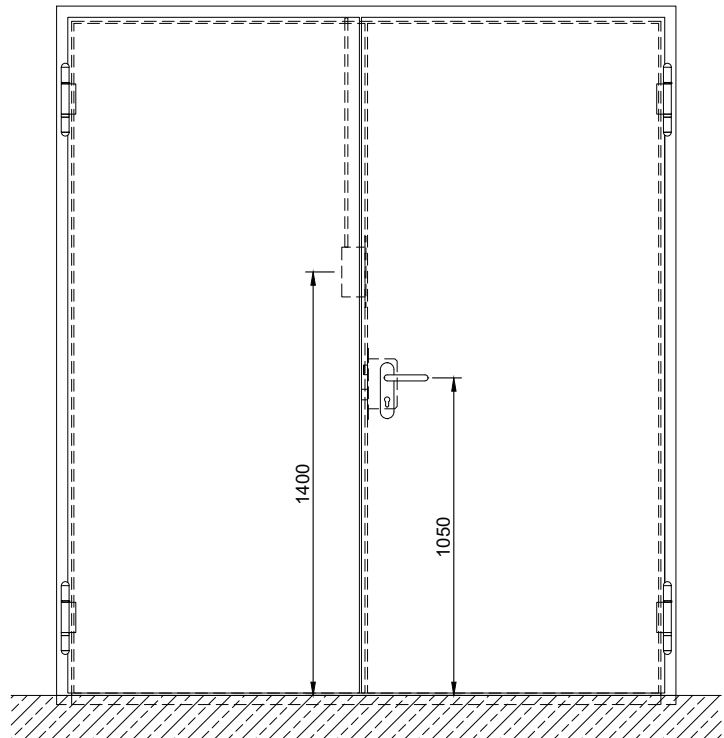
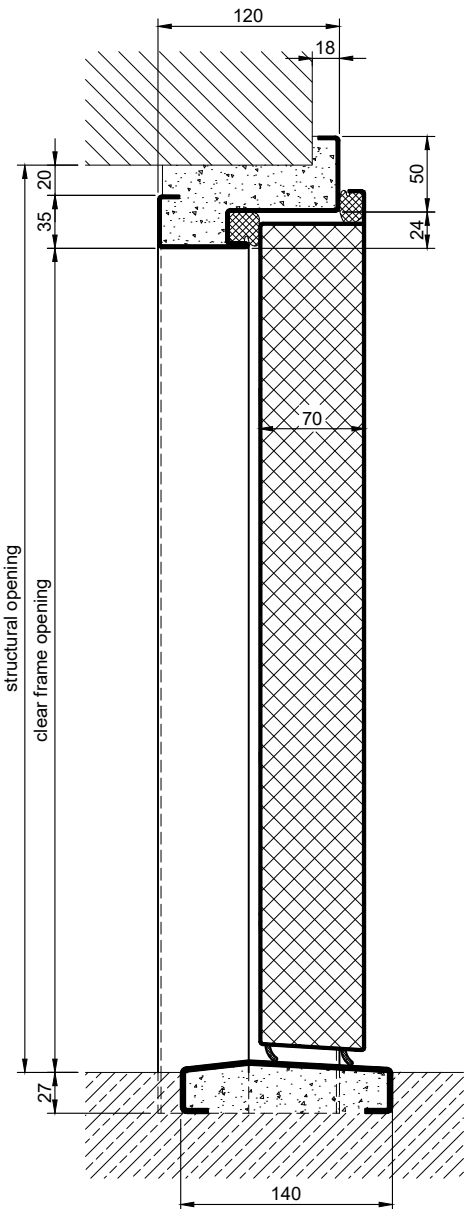
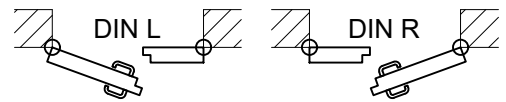
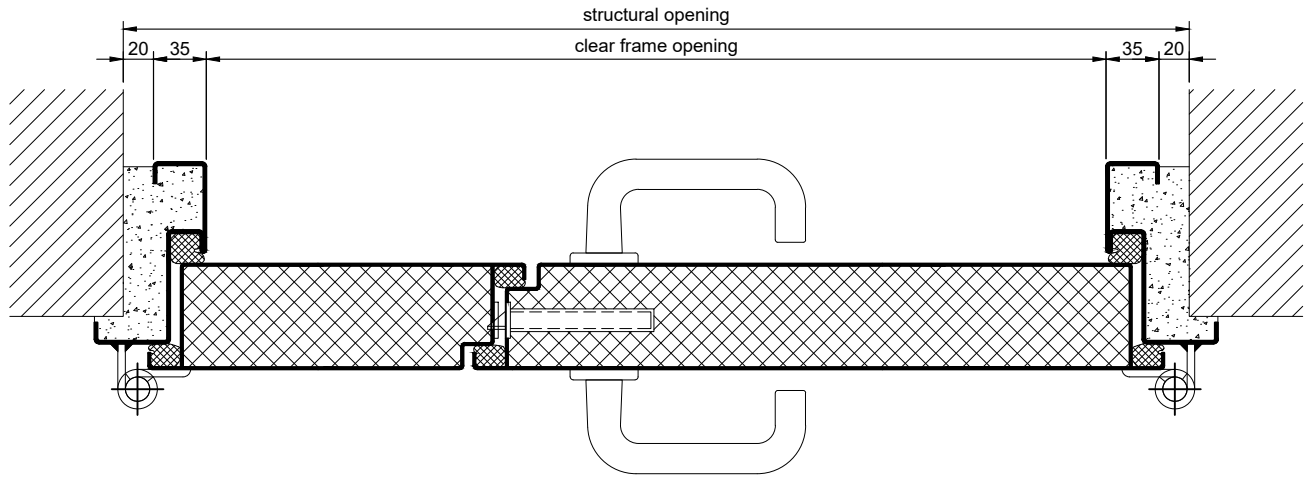
**Supplementary Equipment**

**Standard Glazing:** Double glazing two-sided fixed with profiled and visible screwed steel glazing bars.  
Minimum border 125 mm on side and top, base 340 mm.  
Sound insulation  $R_{w,P}$  max. 50dB

**Stainless Steel:** Material 1.4301 (V2A) or 1.4404 (V4A),  
Surface mill finish or brushed.

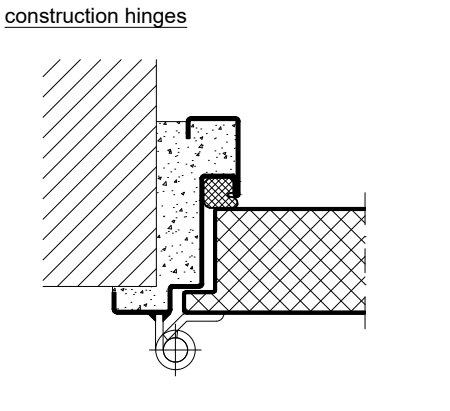
**BUCHELE DELUXE:** The exclusive surface coating.

### BASIC - Version

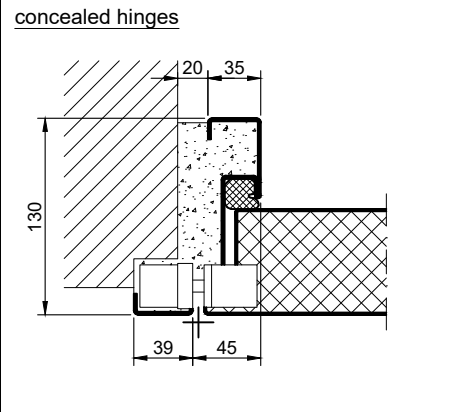


2.10.6. PLANE LINE PL 2 51 DB\_EN

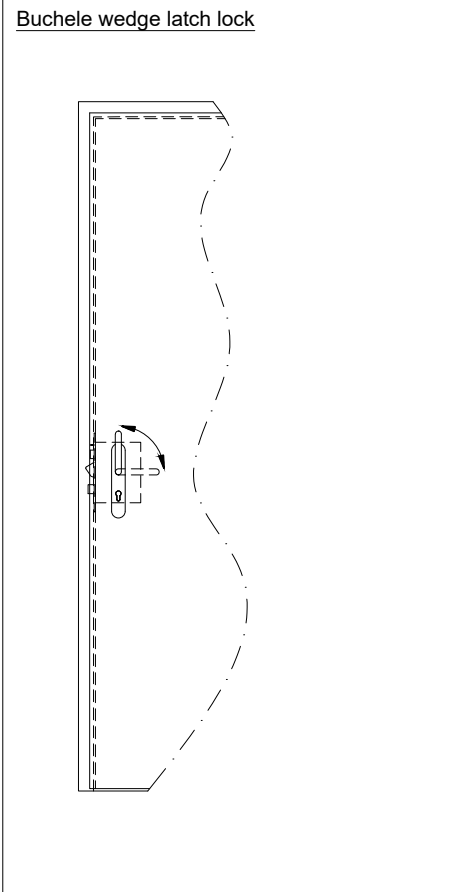
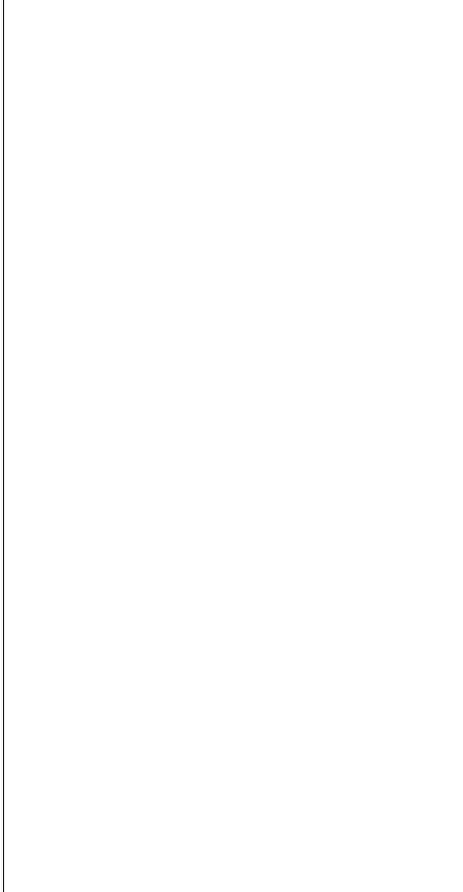
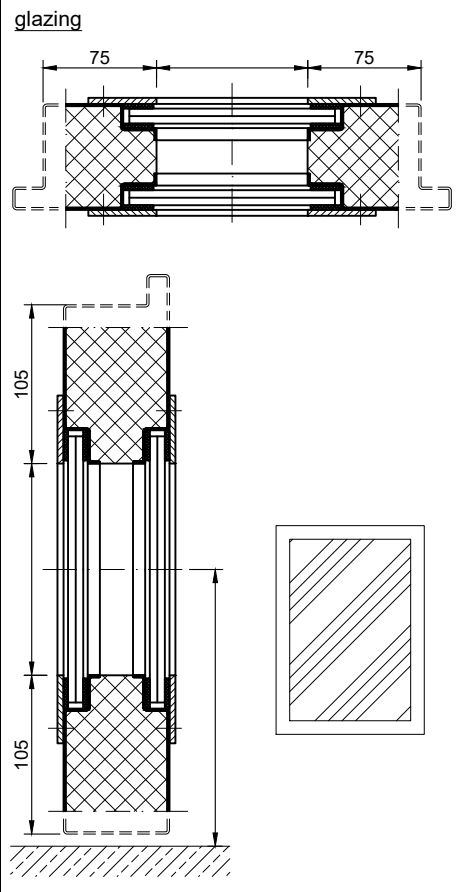
### PREMIUM - Version

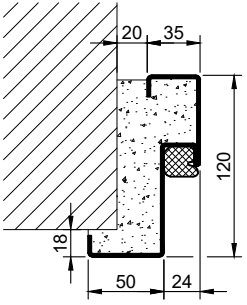
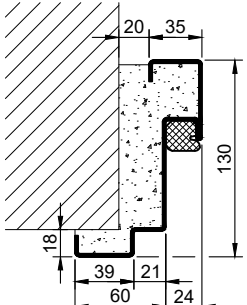
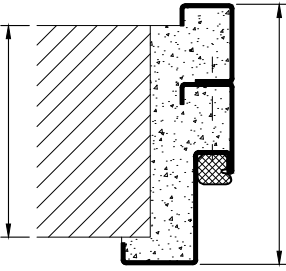
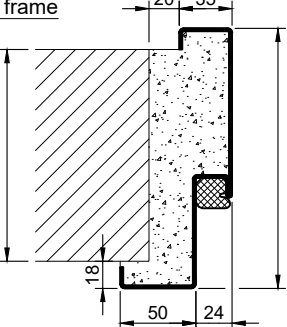
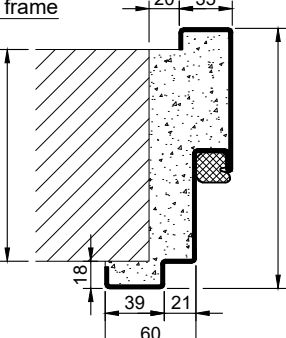
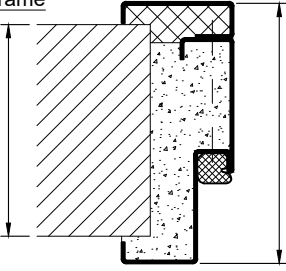
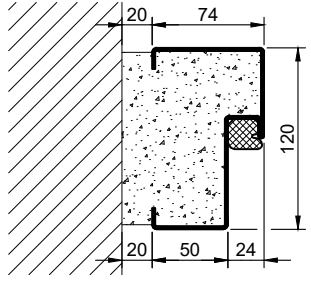
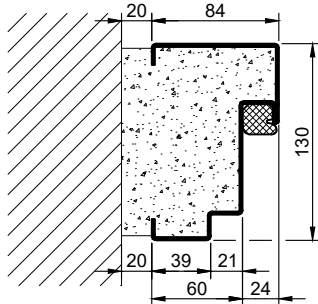
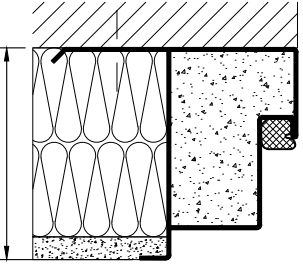
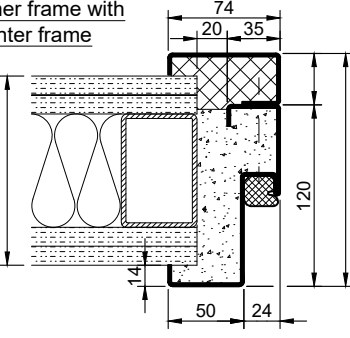
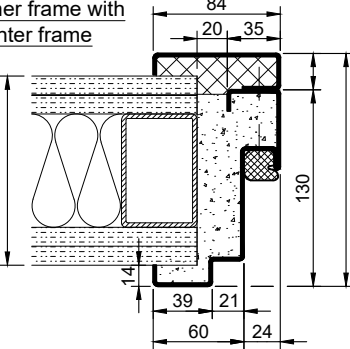
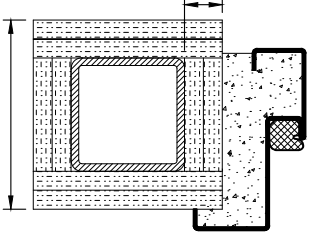


### SUPERIOR - Version



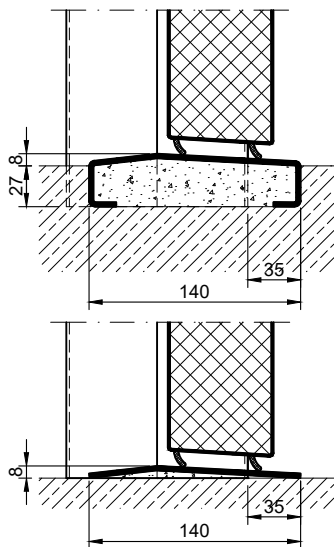
### Options



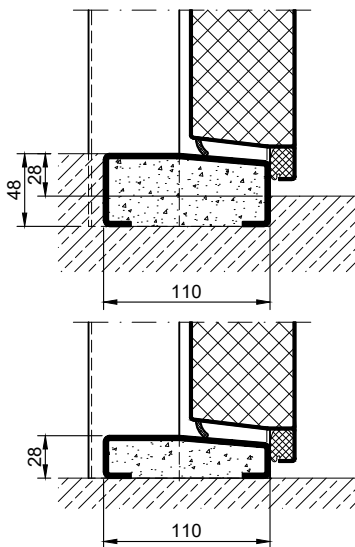
Frames BASIC	Frames PREMIUM/SUPERIOR	Variants (illustration BASIC)
<p>corner frame</p> 	<p>corner frame</p> 	<p>corner frame with additional frame</p> 
<p>encasing frame</p> 	<p>encasing frame</p> 	<p>encasing frame with counter frame</p> 
<p>block frame</p> 	<p>block frame</p> 	<p>juttet block frame</p> 
<p>corner frame with counter frame</p> 	<p>corner frame with counter frame</p> 	<p>corner frame at support / pillar</p> 

### Thresholds

hump sill



half sill



full sill

