

Single Leaf PLANE Line Acoustic Door

Sound Insulation $R_{w,P}$ **52 dB** tested acc. to EN ISO 10140-2

Optional Audited Additional Functions

- Burglar Protection	RC2/RC3/RC4/RC5	tested acc. to EN 1627
- Bullet Resistance	FB4/FB6-NS	tested acc. to EN 1522
- Air Tight	up to class 4	tested acc. to EN 1026
- Rain- and Fire-Water Tight	class 6A	tested acc. to EN 1027
- Wind Load Resistance	up to class C5	tested acc. to EN 12211
- Blast Resistance	up to 20 kPa	tested acc. to EN 13124-1
- Explosion Protection	up to zone 1/21	acc. to EN 1127-1 or ATEX 2014/34/EU
- Stainless Steel		

Range of Dimension

Range of Dimension **Width** from 500 mm to 1500 mm
Height from 500 mm to 3000 mm

Technical Specification and Tender Text

Product: **PL 1 single leaf acoustic door**
brand Buchele tested acc. to EN ISO 10140-2

Door Type: **PLANE Line PL 1 BASIC**

Sound Insulation $R_{w,P}$ **52 dB**

Structural Opening: x mm

Door Leaf: Double-walled, planar 70 mm thick steel door without hinge embossing, three sides rebated with thick rebate
Without bottom stop.
Special insulating inserts fully laid-in and glued.
Duplex tow sealing system.

Threshold: Threshold profile as barrier-free hump sill. Surface galvanized and welded to the frame.

Frame: 3-sided circumferential rebated corner frame.
High-quality multi chamber sealing profile adjustable fixed in the three-sided groove.

Hinges: Three-part, height adjustable construction hinges with hinge pin retention and ball bearing spacer ring for smooth door movement.

Fitting: Mortise lock with latch lever function acc. to EN 12209 (prepared for installation of a profile cylinder lock, provided by customer).
Door handle set in acc. to EN 1906 fixed pivoted synthetic material black in U-shape with rounded short-plate.

Surface: Door leaf and frame galvanized und primed with 2K-PUR primer (Very High Solid) similar RAL 7035.

Alternative: PLANE Line PL 1 PREMIUM with flush mounted optics

- Frame:** 3-sided circumferential rebated PLANE Line special corner frame for flush mounted optics on hinge side.
High-quality multi-chamber sealing profile adjustable fixed in the three-sided groove.
- Hinges:** Three-part, height adjustable construction hinges with hinge pin retention and ball bearing spacer ring for smooth door movement.

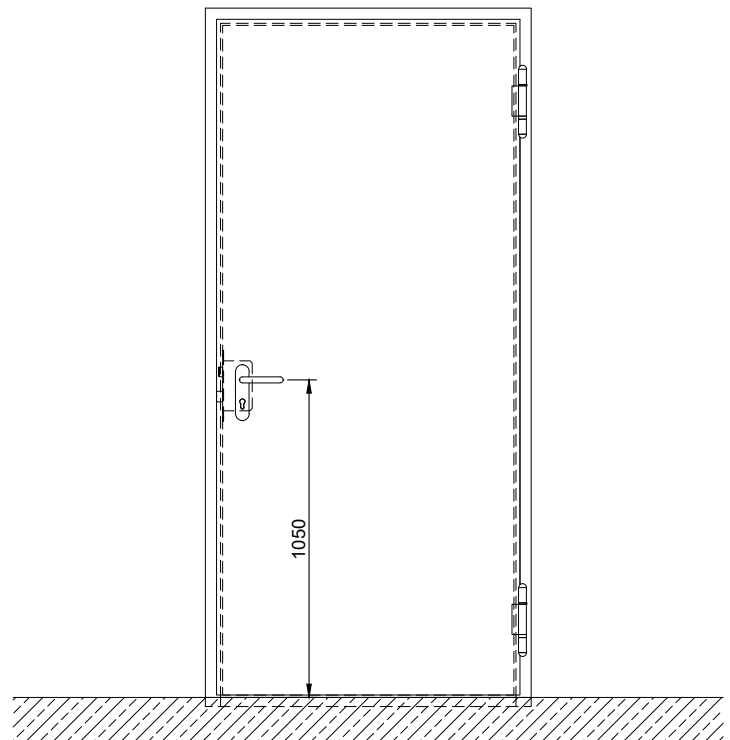
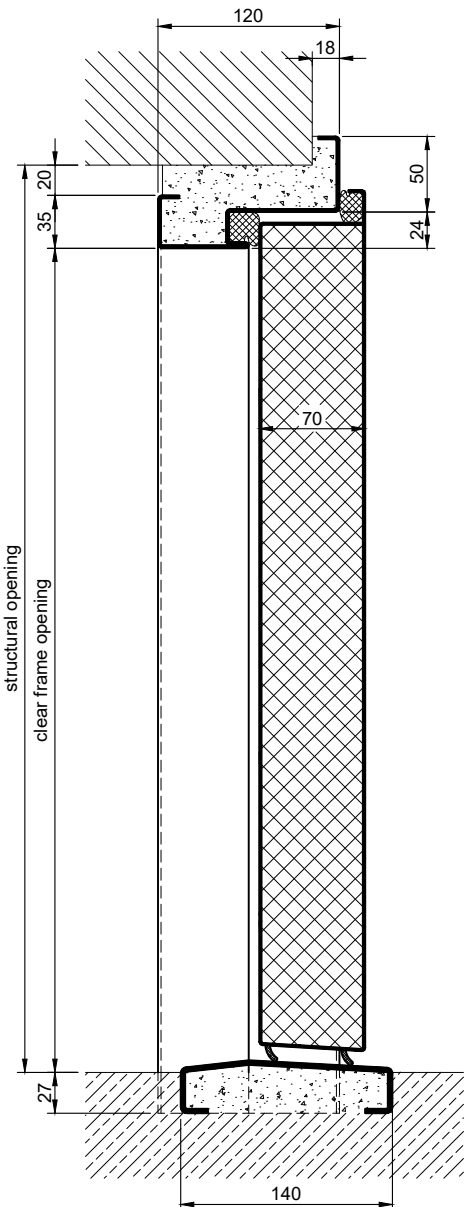
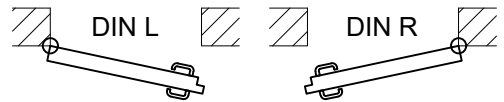
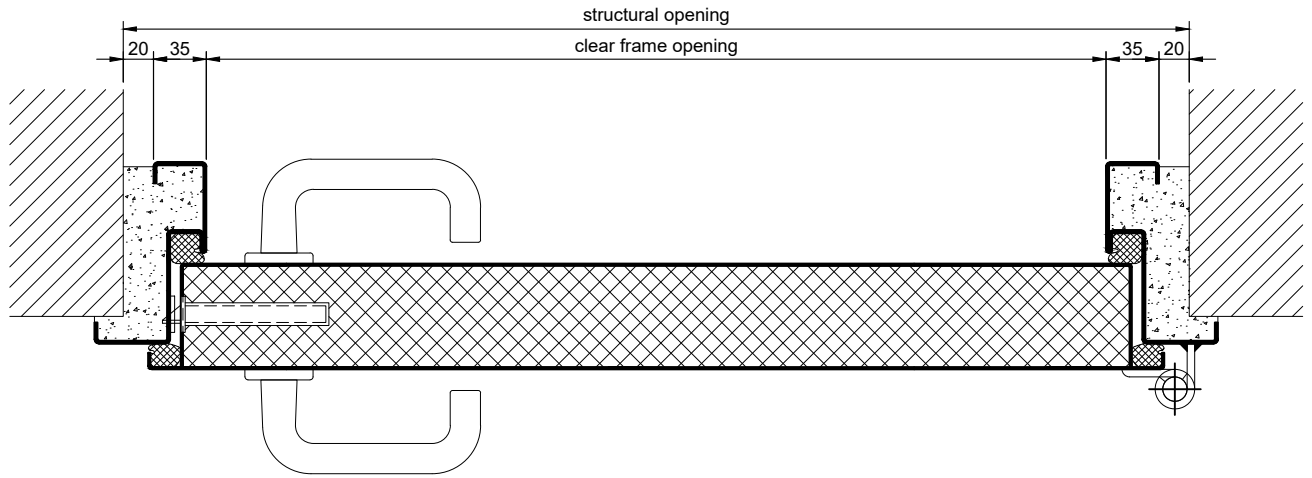
Alternative: PLANE Line PL 1 SUPERIOR with flush mounted optics

- Frame:** 3-sided circumferential rebated PLANE Line special corner frame for flush mounted optics on hinge side.
High-quality multi-chamber sealing profile adjustable fixed in the three-sided groove.
- Hinges:** Concealed hinge system adjustable in three dimensions.

Supplementary Equipment

- Glazing:** Duplex glazing two-sided fixed with profiled and visible screwed steel glazing bars.
Minimum border 125 mm on side and top, base 340 mm.
Sound insulation $R_{w,P}$ max. 50dB
- Stainless Steel:** Material 1.4301 (V2A) or 1.4404 (V4A),
Surface mill finish or brushed.
- BUCHELE DELUXE:** The exclusive surface coating.

BASIC - Version

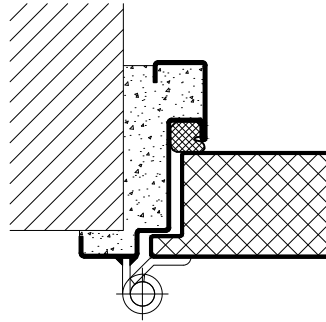


2.0.6_PLANE LINE PL 1 52.DB_EN

technical modifications reserved - edition 05/2024

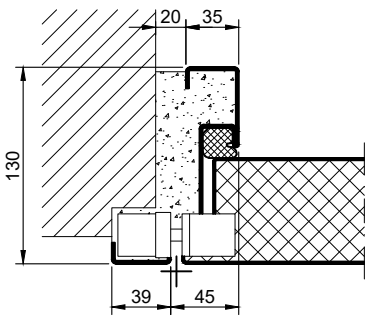
PREMIUM - Version

construction hinges



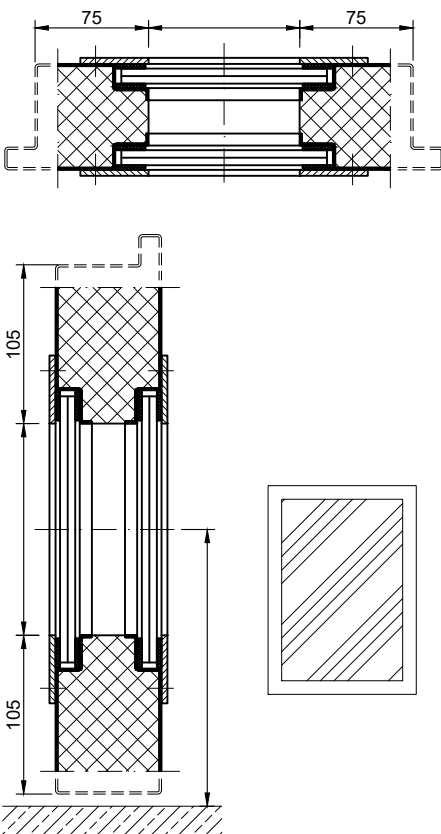
SUPERIOR - Version

concealed hinges

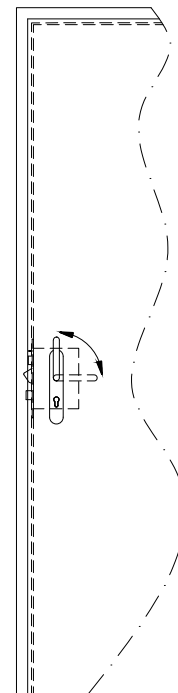


Options

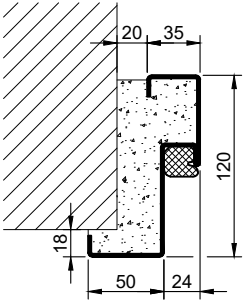
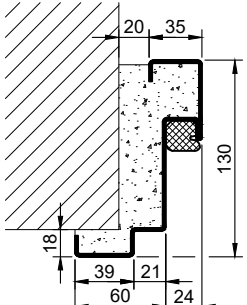
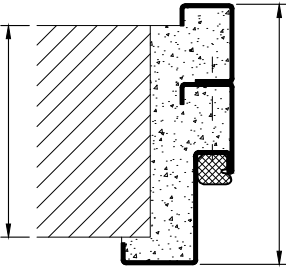
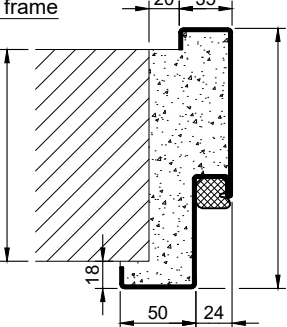
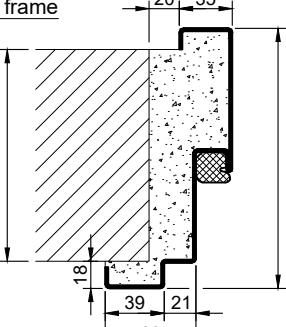
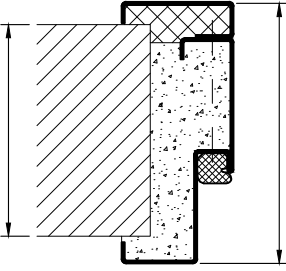
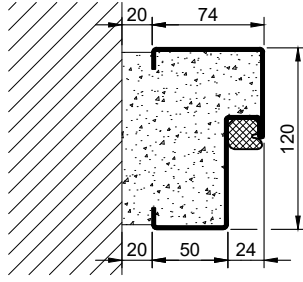

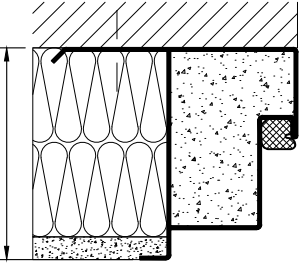
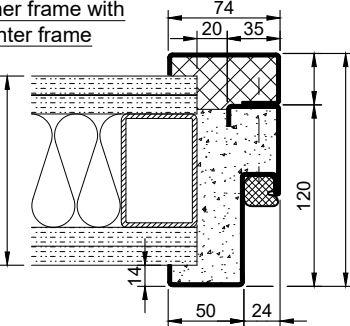
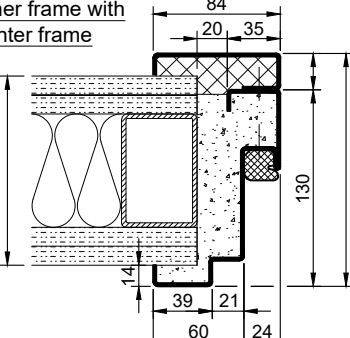
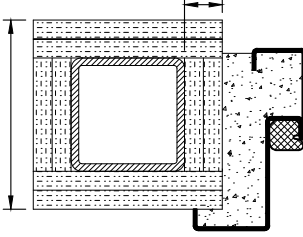
glazing



Buchele wedge latch lock

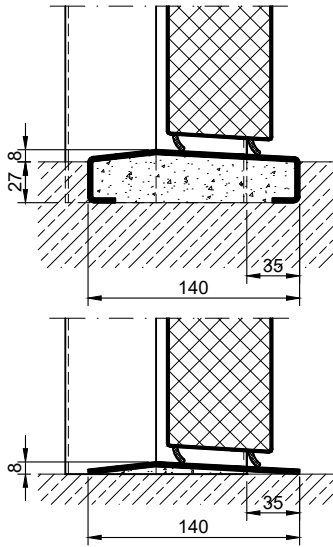


2.0.6 - PLANE LINE PL 1 52.DB - EN

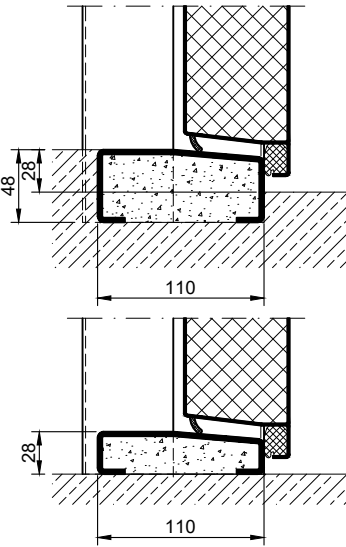
Frames BASIC	Frames PREMIUM/SUPERIOR	Variants (illustration BASIC)
<p>corner frame</p> 	<p>corner frame</p> 	<p>corner frame with additional frame</p> 
<p>encasing frame</p> 	<p>encasing frame</p> 	<p>encasing frame with counter frame</p> 
<p>block frame</p> 	<p>block frame</p> 	<p>juttet block frame</p> 
<p>corner frame with counter frame</p> 	<p>corner frame with counter frame</p> 	<p>corner frame at support / pillar</p> 

Thresholds

hump sill



half sill



full sill

