

## Double Leaf EI<sub>2</sub>90 / T90 Fire and Explosion Resistant Door

<b>Fire Protection</b>	<b>EI<sub>2</sub>90 / T90</b>	<b>tested acc. to EN 1634-1</b>
<b>Smoke Control (optional)</b>	<b>S<sub>a</sub>, S<sub>200</sub> / RS</b>	<b>tested acc. to EN 1634-3</b>
<b>Self-Closing (optional)</b>	<b>up to C5</b>	<b>tested acc. to EN 1191</b>
<b>Blast Resistance</b>	<b>20 kPa</b>	<b>tested acc. to EN 13124-1</b>

**Certified in accordance with DIN EN 16034 / 14351-1 / 13241**  
**General Building Approval as T90-2 (-RS) -FSA acc. to DIN 4102-5 / DIN 18095**

### Optional Audited Additional Functions

- Sound Insulation	up to 54 dB	tested acc. to EN ISO 10140-2
- Burglar Protection	RC2/RC3/RC4	tested acc. to EN 1627
- Bullet Resistance	FB4/FB6-NS	tested acc. to EN 1522
- Air Tight	up to class 4	tested acc. to EN 1026
- Rain- and Fire-Water Tight	class 6A	tested acc. to EN 1027
- Wind load Resistance	up to class C5	tested acc. to EN 1221
- Explosion Protection	up to zone 1/21	acc. to EN 1127-1 or ATEX 2014/34/EU
- Stainless Steel		

### Range of Dimension

**Range of Dimension for Doors**      **Width** from 1375 mm to 3000 mm  
**Height** from 1750 mm to 3000 mm

**Range of Dimension for Hatches**      **Width** from 1000 mm to 1375 mm  
**Height** from 500 mm to 1750 mm

### Technical Specification and Tender Text

<b>Product:</b>	<b>EI<sub>2</sub>90 / T90 double leaf fire and explosion resistant door brand Buchele tested acc. to EN 1634-1 and EN 13124-1</b>
<b>Door Type:</b>	<b>PLANE Line PL 902 BASIC</b>
<b>Blast Resistance:</b>	<b>20 kPa</b>
<b>Structural Opening:</b>	<b>.... x .... mm</b>
<b>Door Leaf:</b>	Double-walled, planar 70 mm thick steel door leaf without hinge embossing, three sides rebated with thick rebate. Without bottom stop. Special insulating inserts fully laid-in and glued. Passive leaf with multi-chamber sealing profile in the middle rebate. Securing pin screwed in door leaf rebate.
<b>Threshold:</b>	Floor bracket as separation sill. Surface galvanized and welded to the frame.
<b>Frame:</b>	3-sided circumferential rebated corner frame with visible black coated intumescent material in rebate. High-quality multi chamber sealing profile adjustable fixed in the three-sided groove.
<b>Hinges:</b>	Three-part, height adjustable construction hinges with hinge pin retention and ball bearing spacer ring for smooth door movement.

<b>Door Closer:</b>	2 pieces door closer system with standard arm acc. to EN 1154 silver coloured mounted on hinge side. Door coordinator and 2 pieces of 30 mm high brackets with plastic roller.	
<b>Fitting:</b>	<b>Active leaf</b> with self-locking 4-point security mortise lock with latch lever function acc. to EN 12209 (prepared for installation of a profile cylinder lock, provided by customer). Door handle set in acc. to EN 1906 fixed pivoted synthetic material black in U-shape with rounded short-plate. <b>Passive leaf</b> with self-locking concealed shoot bolt lock with upper switch lock.	
<b>Surface:</b>	Door leaf and frame galvanized und primed with 2K-PUR primer (Very High Solid) similar RAL 7035.	
<b>Installation:</b>	masonry	≥ 175 mm
	concrete	≥ 140 mm
	areated concrete	≥ 200 mm
	mounting wall F60	≥ 125 mm

### Alternative: PLANE Line PL 902 PREMIUM with flush mounted optics

<b>Frame:</b>	3-sided circumferential rebated PLANE Line special corner frame for flush mounted optics on hinge side. With visible, black coated intumescent material in rebate. High-quality multi-chamber sealing profile adjustable fixed in the three-sided groove.	
<b>Hinges:</b>	Three-part, height adjustable construction hinges with hinge pin retention and ball bearing spacer ring for smooth door movement.	

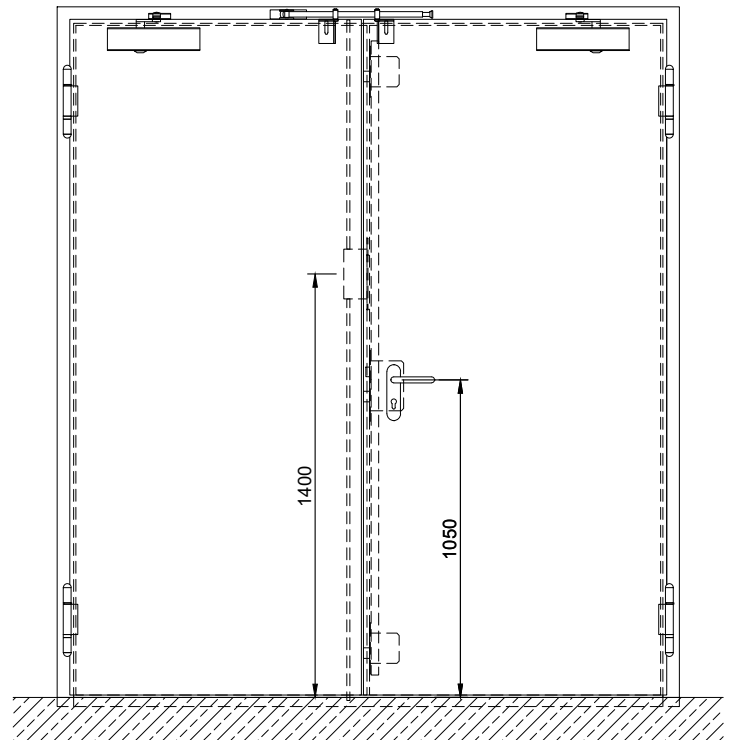
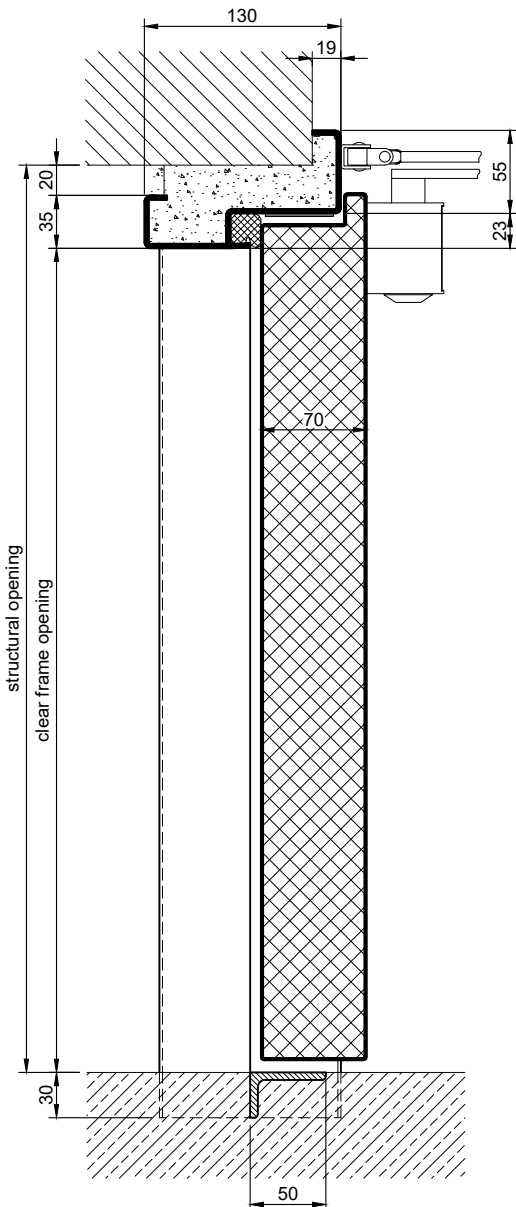
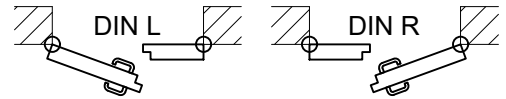
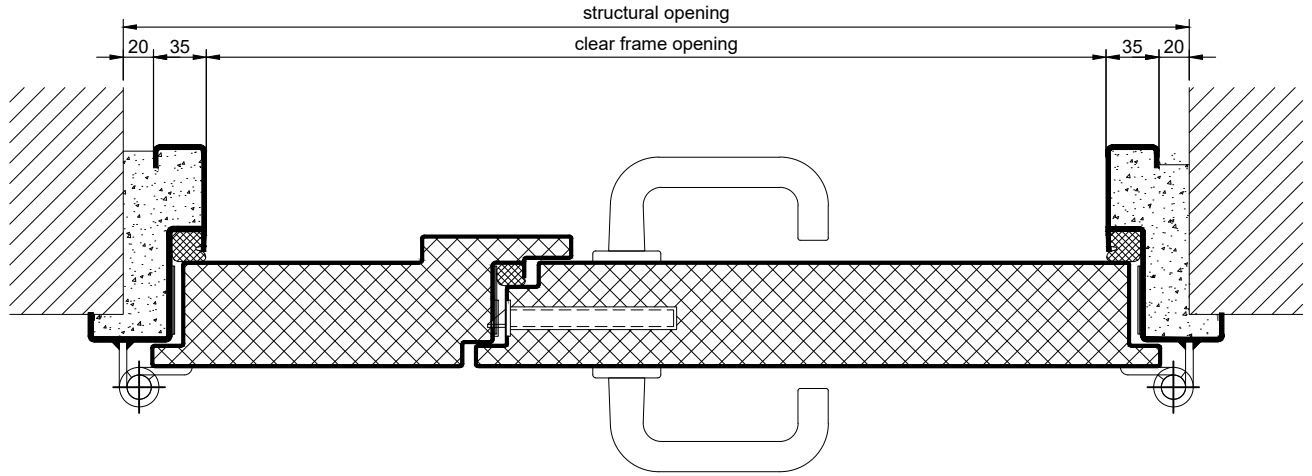
### Alternative: PLANE Line PL 902 SUPERIOR with flush mounted optics

<b>Frame:</b>	3-sided circumferential rebated PLANE Line special corner frame for flush mounted optics on hinge side. With visible, black coated intumescent material in rebate. High-quality multi-chamber sealing profile adjustable fixed in the three-sided groove.	
<b>Hinges:</b>	Three-part, height adjustable construction hinges with hinge pin retention and ball bearing spacer ring for smooth door movement.	
<b>Door Closer:</b>	Concealed slide rail door closer system acc. to EN 1154 integrated in frame and door leaf.	

## Supplementary Equipment

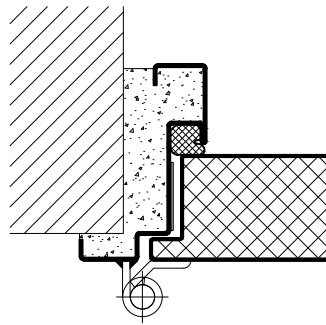
<b>Glazing:</b>	F90 fire-protective glazing fixed with profiled and visible screwed steel glazing bars. Minimum border 125 mm on side and top, base 300 mm.	
<b>Stainless Steel:</b>	Material 1.4301 (V2A) or 1.4404 (V4A), Surface mill finish or brushed.	
<b>BUCHELE DELUXE:</b>	The exclusive surface coating.	

### BASIC - Version

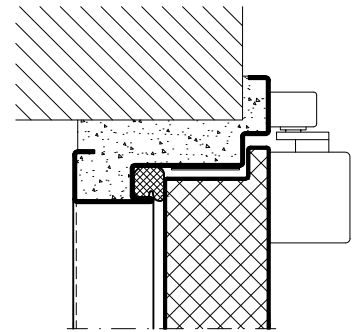


### PREMIUM - Version

construction hinges

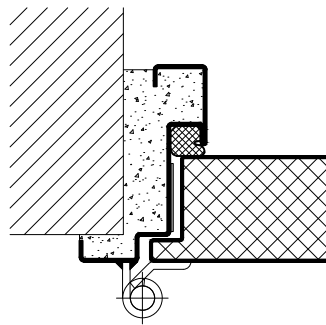


slide rail door closer

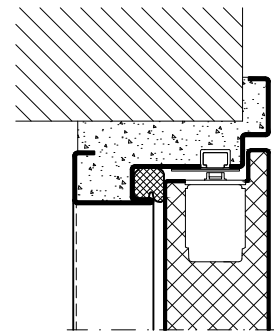


### SUPERIOR - Version

construction hinges

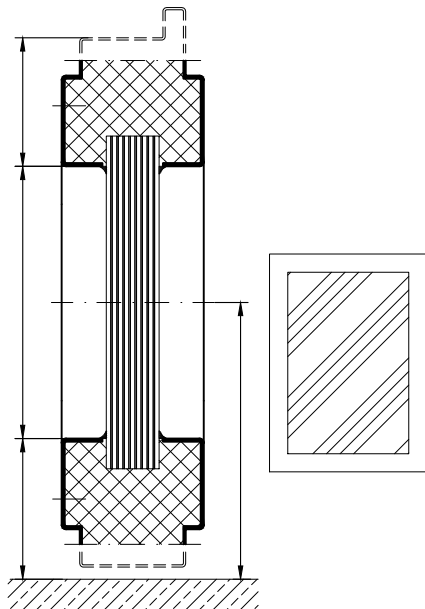
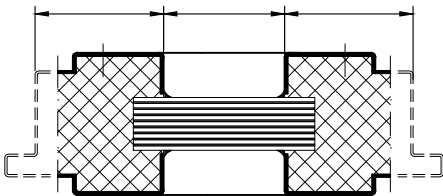


integrated door closer

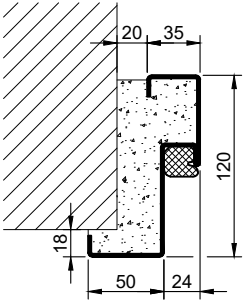
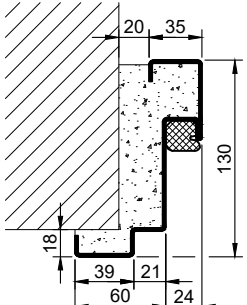
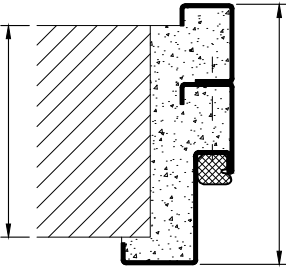
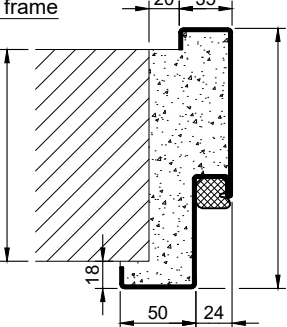
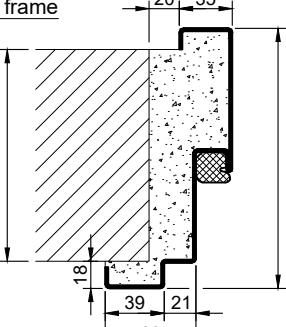
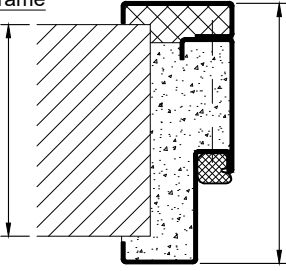
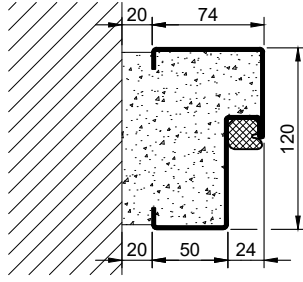
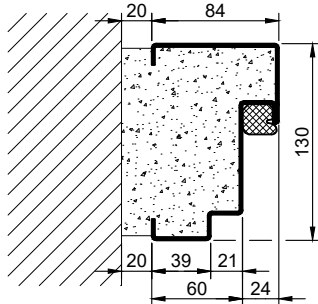


### Options

glazing

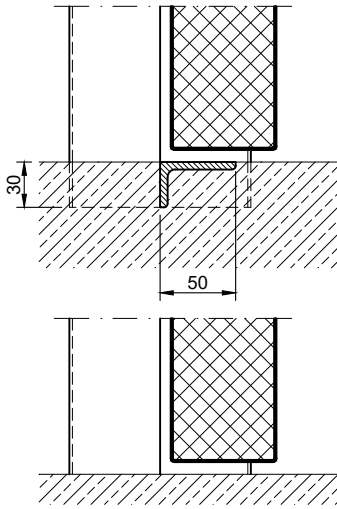


1.55.6 PLANE LINE PL 902 - 20KPA\_EN

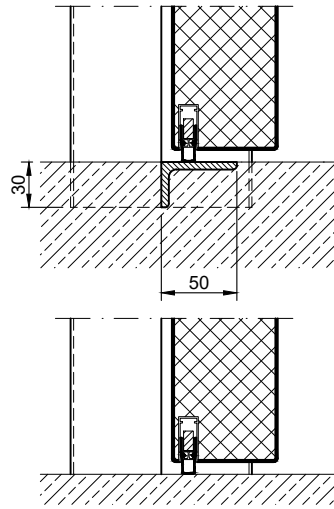
Frames BASIC	Frames PREMIUM/SUPERIOR	Variants (illustration BASIC)
<p>corner frame</p> 	<p>corner frame</p> 	<p>corner frame with additional frame</p> 
<p>encasing frame</p> 	<p>encasing frame</p> 	<p>encasing frame with counter frame</p> 
<p>block frame</p> 	<p>block frame</p> 	

### Thresholds

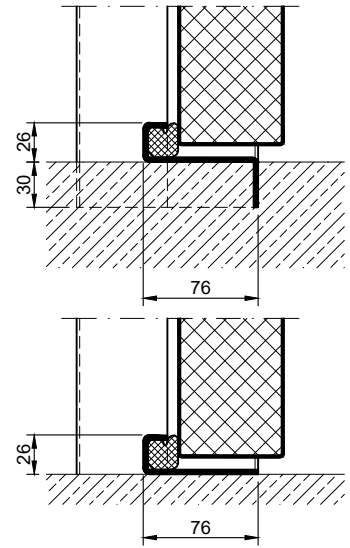
separation sill



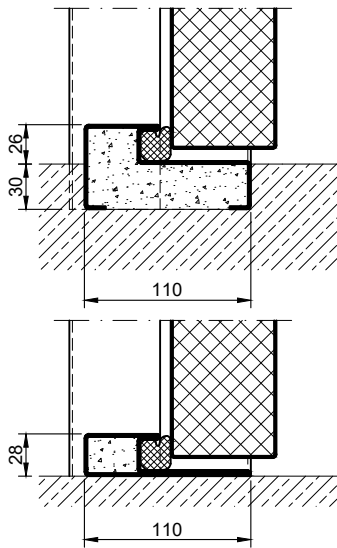
drop seal



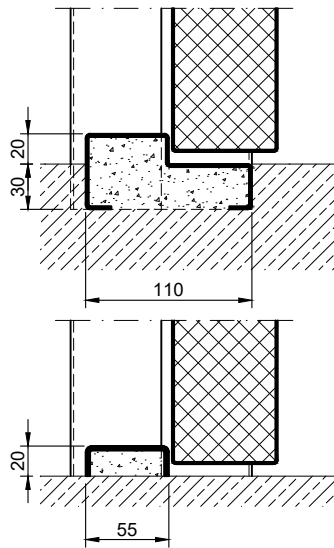
stop sill with seal



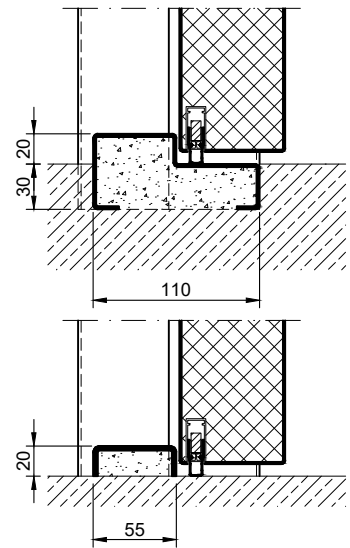
stop sill with seal



stop sill without seal



stop sill with drop seal



full sill

