

## Double Leaf EI<sub>290</sub> / T90 Fire Resistant Security Door

<b>Fire Protection</b>	<b>EI<sub>290</sub> / T90</b>	<b>tested acc. to EN 1634-1</b>
<b>Smoke Control (optional)</b>	<b>S<sub>a</sub>, S<sub>200</sub> / RS</b>	<b>tested acc. to EN 1634-3</b>
<b>Self-Closing (optional)</b>	<b>up to C5</b>	<b>tested acc. to EN 1191</b>
<b>Bullet Resistance</b>	<b>FB 6 NS</b>	<b>tested acc. to EN 1522</b>

### Optional Audited Additional Functions

- Smoke Control	<b>RS (S<sub>200</sub>)</b>	tested acc. to EN 1634-3
- Sound Insulation	<b>up to R<sub>w,P</sub> 54dB</b>	tested acc. to EN ISO 10140-2
- Burglar Protection	<b>RC2/ RC3/ RC4/ RC5</b>	tested acc. to EN 1627
- Air Tight	<b>up to class 4</b>	tested acc. to EN 1026
- Rain- and Fire-Water Tight	<b>class 6A</b>	tested acc. to EN 1027
- Wind load Resistance	<b>up to class C5</b>	tested acc. to EN 12211
- Blast Resistance	<b>up to 20 kPa</b>	tested acc. to EN 13124-1
- Explosion Protection	<b>up to zone 1/21</b>	acc. to EN 1127-1 or ATEX 2014/34/EU
- Stainless Steel		

### Range of Dimension

**Range of Dimension for Doors**      **Width** from 1375 mm to 3000 mm  
**Height** from 1750 mm to 3000 mm

**Range of Dimension for Hatches**      **Width** from 1275 mm to 1375 mm  
**Height** from 500 mm to 1750 mm

### Technical Specification and Tender Text

<b>Product:</b>	<b>EI<sub>290</sub> / T90 double leaf fire resistant security door brand Buchele tested acc. to EN 1634-1 and EN 1522</b>
<b>Door Type:</b>	<b>PLANE Line PL 902 BASIC</b>
<b>Bullet Resistance:</b>	<b>FB 6 NS</b>
<b>Structural Opening:</b>	<b>.... x .... mm</b>
<b>Door Leaf:</b>	Double-walled, planar 70 mm thick steel door leaf without hinge embossing, three sides rebated with thick rebate. Without bottom stop. Special insulating inserts fully laid-in and glued. Passive leaf with multi-chamber sealing profile in the middle rebate. Securing pin screwed in door leaf rebate.
<b>Threshold:</b>	Floor bracket as separation sill. Surface galvanized and welded to the frame.
<b>Frame:</b>	3-sided circumferential rebated corner frame with visible black coated intumescent material in rebate. High-quality multi chamber sealing profile adjustable fixed in the three-sided groove.
<b>Hinges:</b>	Three-part, height adjustable construction hinges with hinge pin retention and ball bearing spacer ring for smooth door movement.
<b>Door Closer:</b>	Door closer system with standard arm acc. to EN 1154 silver coloured mounted on hinge side.

<b>Fitting:</b>	<b>Active leaf</b> with 2-point mortise lock with latch lever function acc. to EN 12209 (prepared for installation of a profile cylinder lock, provided by customer). Door handle set in acc. to EN 1906 fixed pivoted synthetic material black in U-shape with rounded long-plate. <b>Passive leaf</b> with self-locking concealed shoot bolt lock with upper switch lock.
<b>Surface:</b>	Door leaf and frame galvanized und primed with 2K-PUR primer (Very High Solid) similar RAL 7035.
<b>Installation:</b>	masonry $\geq 175$ mm concrete $\geq 140$ mm areated concrete $\geq 200$ mm mounting wall F60 $\geq 125$ mm

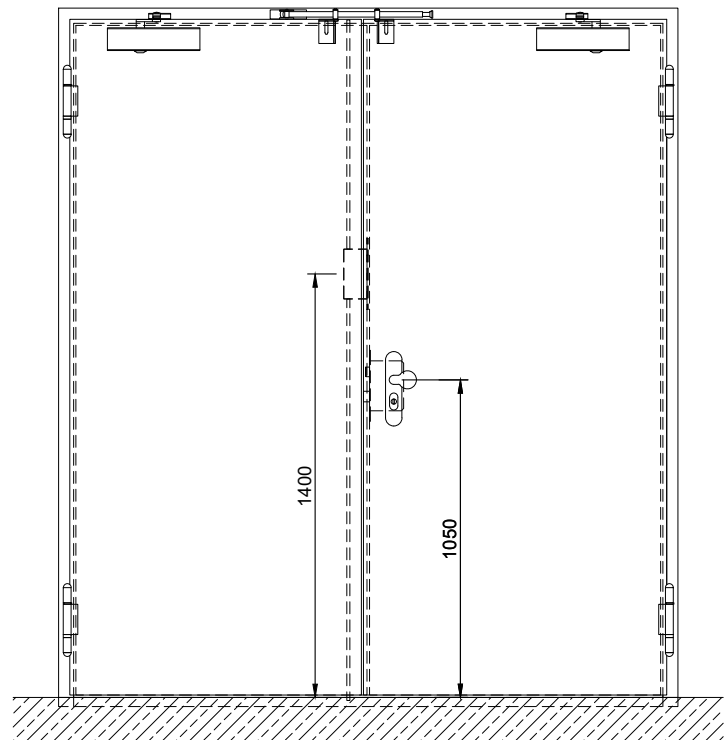
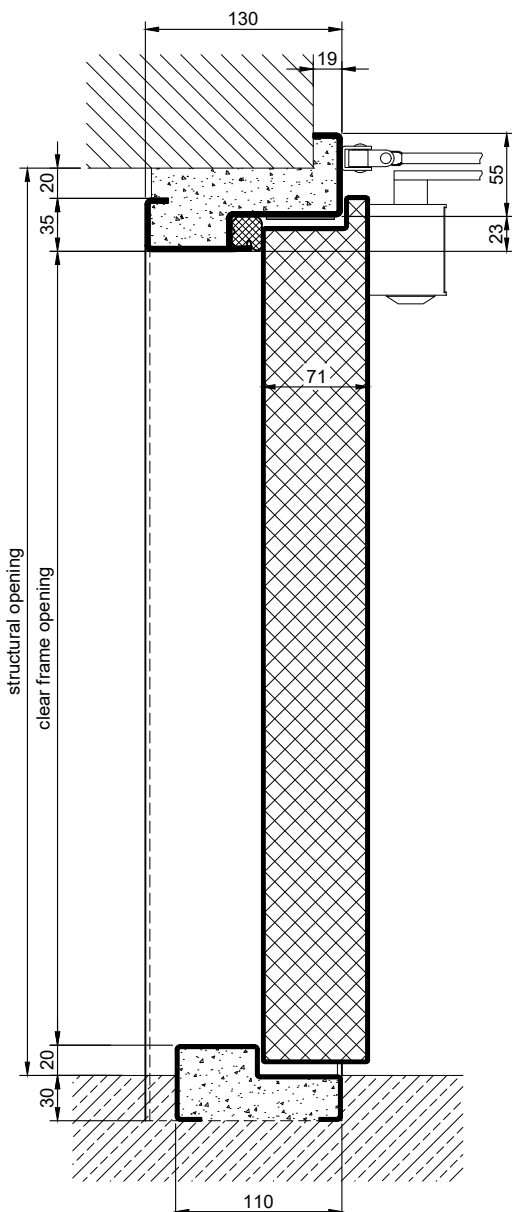
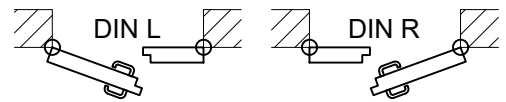
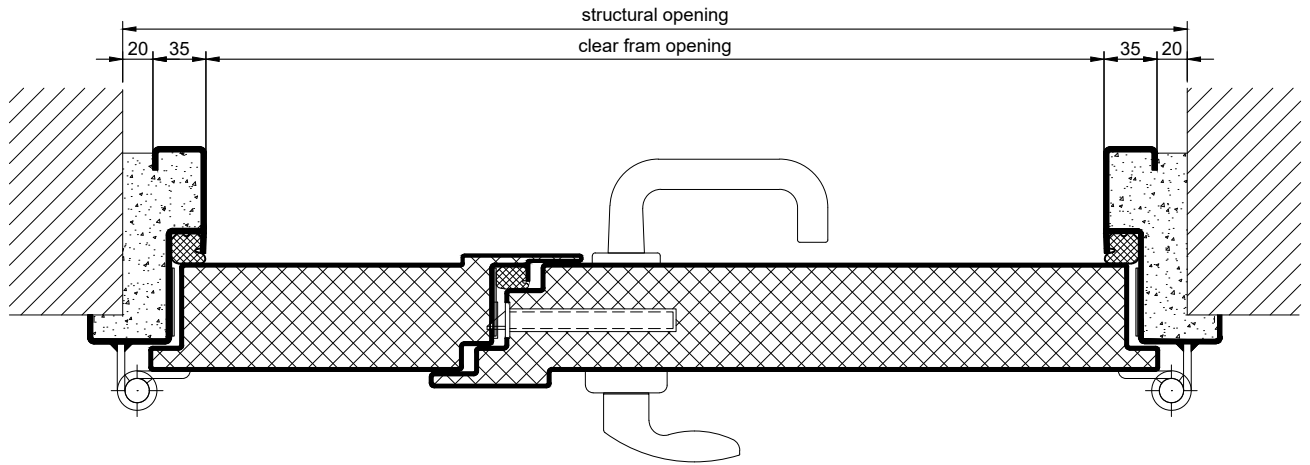
### Alternative: PLANE Line PL 902 PREMIUM with flush mounted optics

<b>Frame:</b>	3-sided circumferential rebated PLANE Line special corner frame for flush mounted optics on hinge side. With visible, black coated intumescent material in rebate. High-quality multi-chamber sealing profile adjustable fixed in the three-sided groove.
<b>Hinges:</b>	Three-part, height adjustable construction hinges with hinge pin retention and ball bearing spacer ring for smooth door movement.
<b>Door Closer:</b>	Slide rail door closer system acc. to EN 1154 silver coloured mounted on hinge side.

### Supplementary Equipment

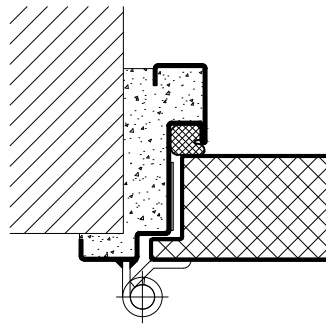
<b>Glazing:</b>	F90/BR6 fire-protective glazing fixed with profiled and visible screwed steel glazing bars. Minimum border 125 mm on side and top, base 300 mm.
<b>Stainless Steel:</b>	Material 1.4301 (V2A) or 1.4404 (V4A), Surface mill finish or brushed.
<b>BUCHELE DELUXE:</b>	The exclusive surface coating.

### BASIC - Version

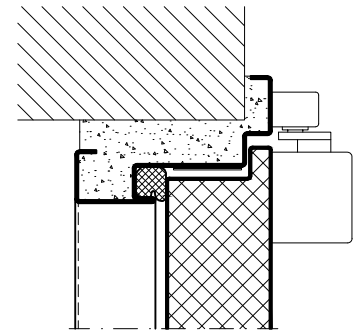


### PREMIUM - Version

construction hinges



slide rail door closer

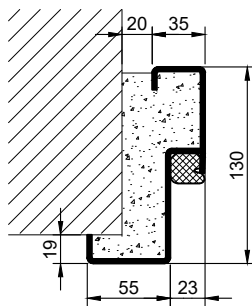


### Frames BASIC

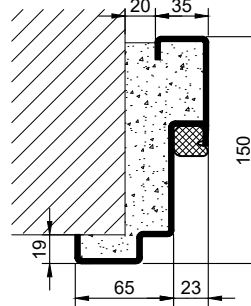
### Frames PREMIUM

### Variants (illustration BASIC)

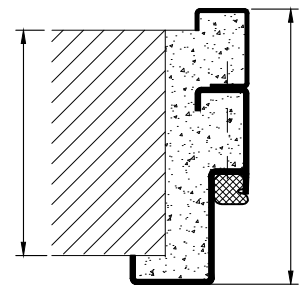
corner frame



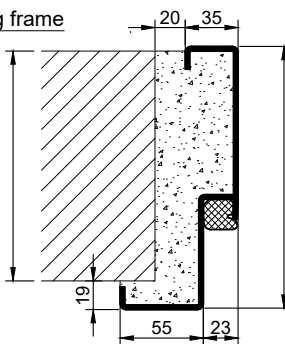
corner frame



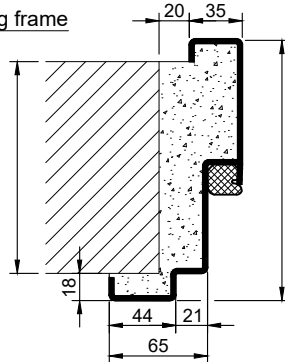
corner frame with additional frame



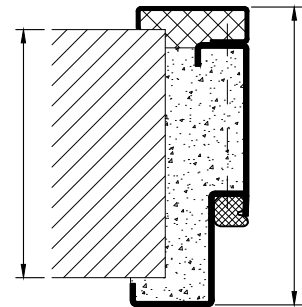
encasing frame



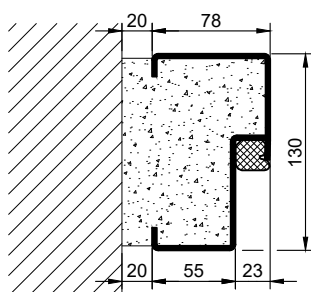
encasing frame



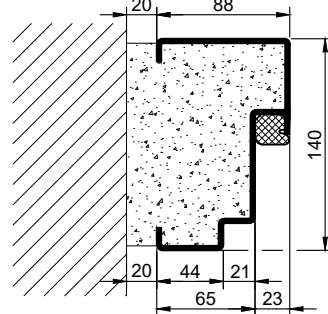
encasing frame with counter frame



block frame



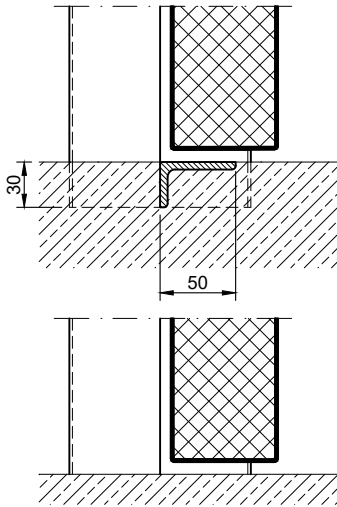
block frame



### Thresholds

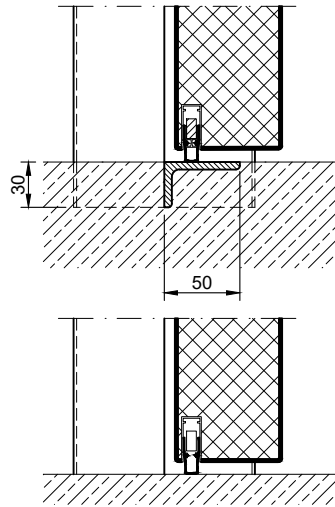
#### separation sill

information:  
With this version there is **NO** bullet resistance in the threshold area!

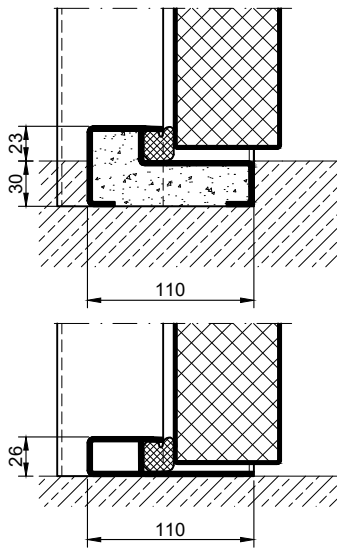


#### drop seal

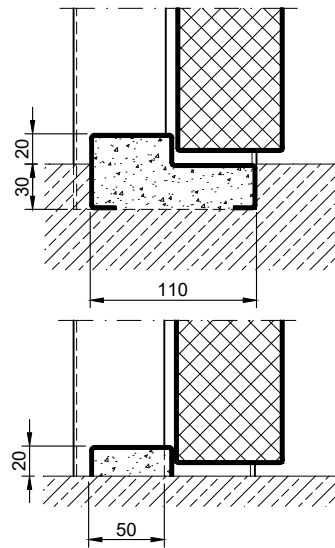
information:  
With this version there is **NO** bullet resistance in the threshold area!



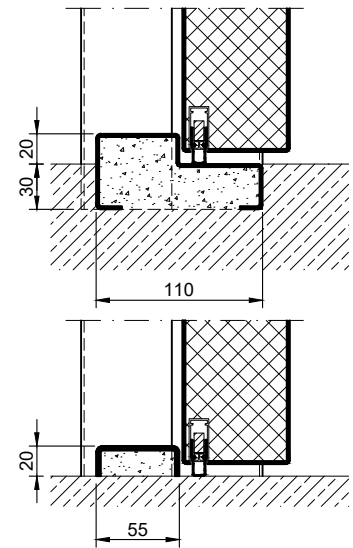
#### stop sill with seal



#### stop sill without seal



#### stop sill with drop seal



#### full sill

