

Single Leaf EI₂90 / T90 Fire Resistant Security Door

Fire Protection	EI₂90 / T90	tested acc. to EN 1634-1
Smoke Control (optional)	S_a, S₂₀₀ / RS	tested acc. to EN 1634-3
Self-Closing (optional)	up to C5	tested acc. to EN 1191
Bullet Resistance	FB 6 NS	tested acc. to EN 1522

Optional Audited Additional Functions

- Smoke Control	RS (S ₂₀₀)	tested acc. to EN 1634-3
- Sound Insulation	up to R _{w,P} 54dB	tested acc. to EN ISO 10140-2
- Burglar Protection	RC2/ RC3/ RC4/ RC5	tested acc. to EN 1627
- Air Tight	up to class 4	tested acc. to EN 1026
- Rain- and Fire-Water Tight	class 6A	tested acc. to EN 1027
- Wind load Resistance	up to class C5	tested acc. to EN 12211
- Blast Resistance	up to 20 kPa	tested acc. to EN 13124-1
- Explosion Protection	up to zone 1/21	acc. to EN 1127-1 or ATEX 2014/34/EU
- Stainless Steel		

Range of Dimension

Range of Dimension for Doors Width from 625 mm to 1500 mm
Height from 1750 mm to 3000 mm

Range of Dimension for Hatches Width from 625 mm to 750 mm
Height from 500 mm to 1750 mm

Technical Specification and Tender Text

Product:	EI₂90 / T90 single leaf fire resistant security door brand Buchele tested acc. to EN 1634-1 and EN 1522
Door Type:	PLANE Line PL 901 BASIC
Bullet Resistance:	FB 6 NS
Structural Opening: x mm
Door Leaf:	Double-walled, planar 70 mm thick steel door leaf without hinge embossing, three sides rebated with thick rebate. Without bottom stop. Special insulating inserts fully laid-in and glued. Securing pin screwed in door leaf rebate.
Threshold:	Floor bracket as separation sill. Surface galvanized and welded to the frame.
Frame:	3-sided circumferential rebated corner frame with visible black coated intumescent material in rebate. High-quality multi chamber sealing profile adjustable fixed in the three-sided groove.
Hinges:	Three-part, height adjustable construction hinges with hinge pin retention and ball bearing spacer ring for smooth door movement.
Door Closer:	Door closer system with standard arm acc. to EN 1154 silver coloured mounted on hinge side.

Fitting:	2-point security mortise lock with latch lever function acc. to EN 12209 (prepared for installation of a profile cylinder lock, provided by customer). Security door handle set acc. to EN 18257 fixed pivoted, stainless steel, in U-shape with rounded long-plate.
Surface:	Door leaf and frame galvanized und primed with 2K-PUR primer (Very High Solid) similar RAL 7035.
Installation:	masonry ≥ 175 mm concrete ≥ 140 mm areated concrete ≥ 200 mm mounting wall F60 ≥ 125 mm

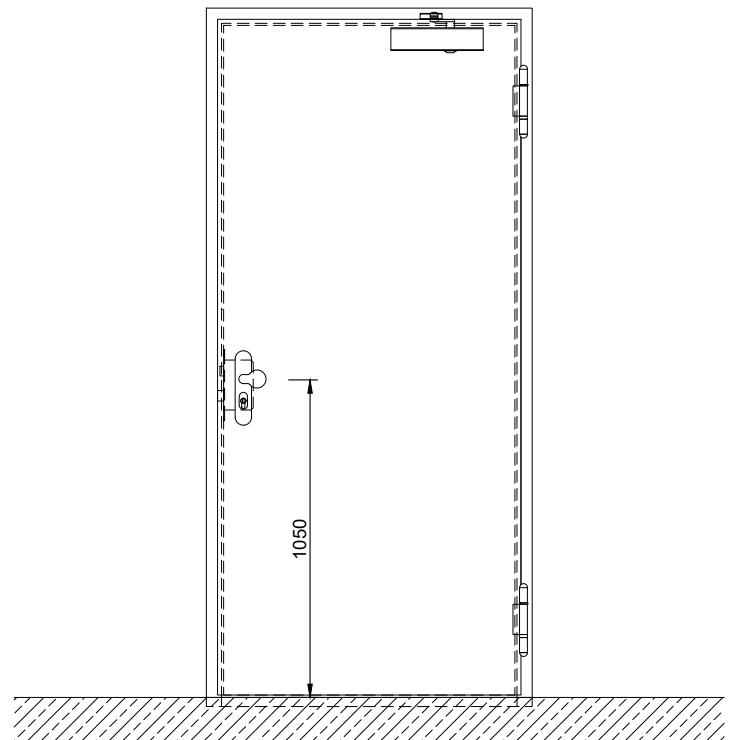
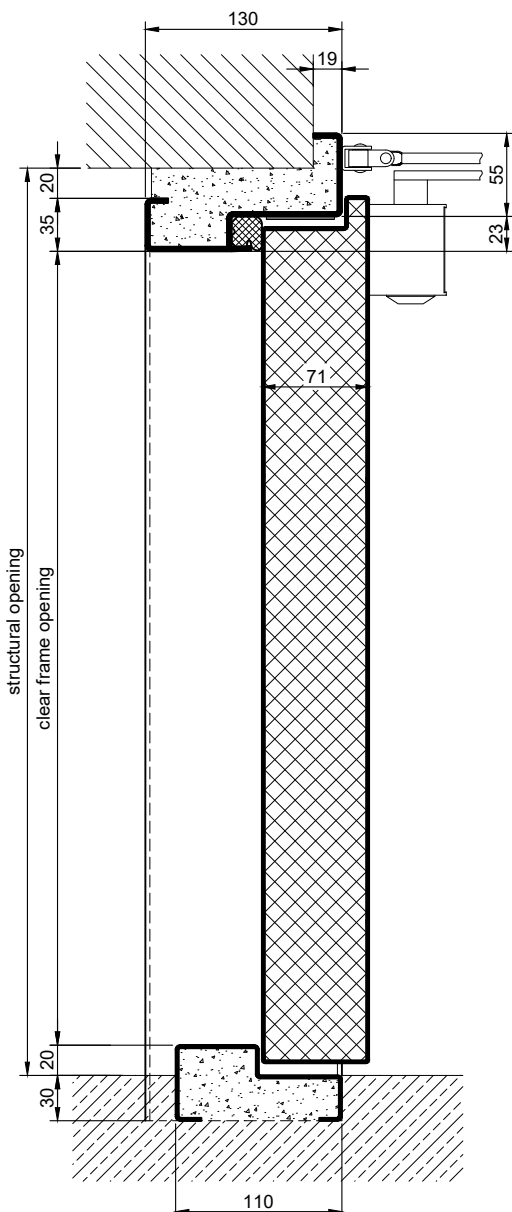
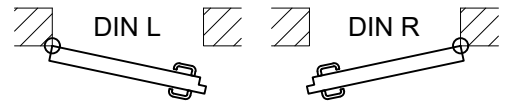
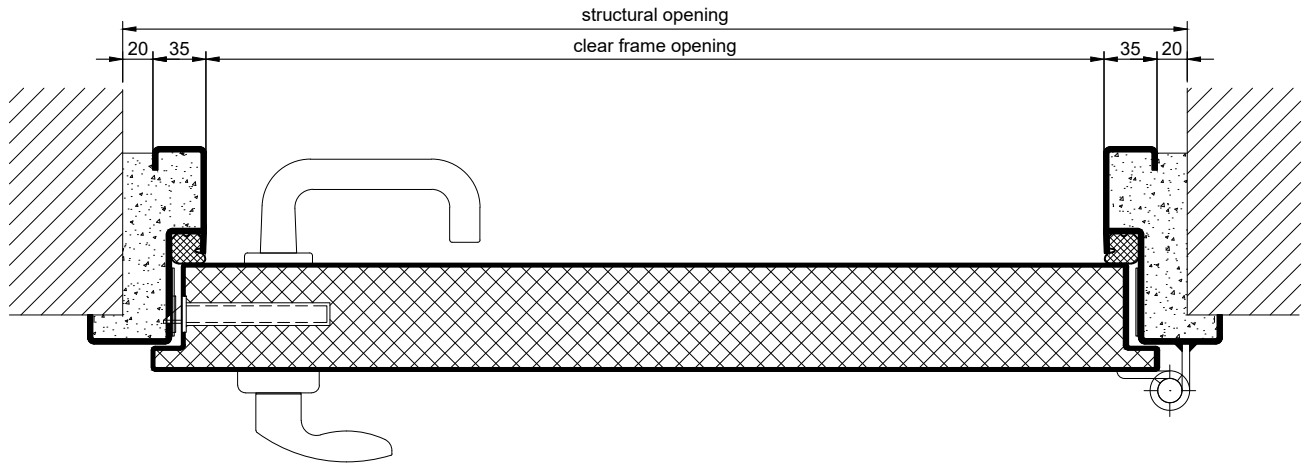
Alternative: PLANE Line PL 901 PREMIUM with flush mounted optics

Frame:	3-sided circumferential rebated PLANE Line special corner frame for flush mounted optics on hinge side. With visible, black coated intumescent material in rebate. High-quality multi-chamber sealing profile adjustable fixed in the three-sided groove.
Hinges:	Three-part, height adjustable construction hinges with hinge pin retention and ball bearing spacer ring for smooth door movement.
Door Closer:	Slide rail door closer system acc. to EN 1154 silver coloured mounted on hinge side.

Supplementary Equipment

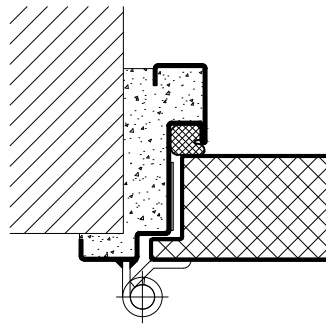
Glazing:	F90/BR6 fire-protective glazing fixed with profiled and visible screwed steel glazing bars. Minimum border 125 mm on side and top, base 300 mm.
Stainless Steel:	Material 1.4301 (V2A) or 1.4404 (V4A), Surface mill finish or brushed.
BUCHELE DELUXE:	The exclusive surface coating.

BASIC - Version

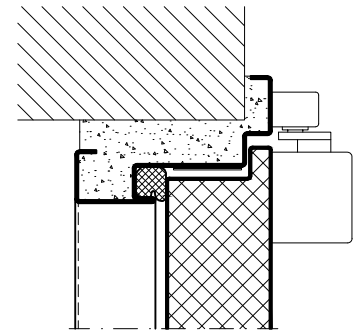


PREMIUM - Version

construction hinges



slide rail door closer

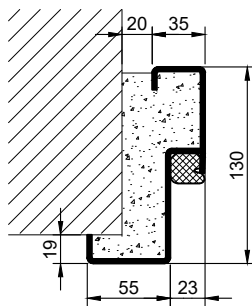


Frames BASIC

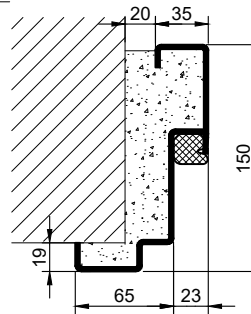
Frames PREMIUM

Variants illustration BASIC

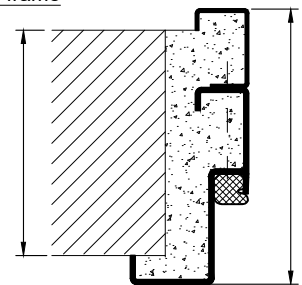
corner frame



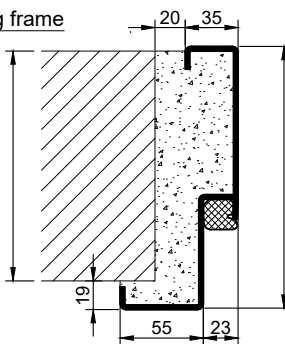
corner frame



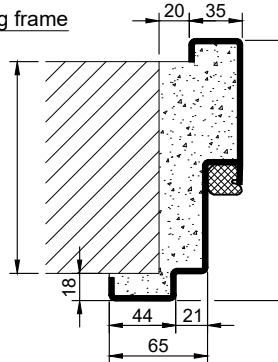
corner frame with counter frame



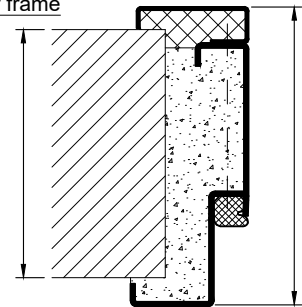
encasing frame



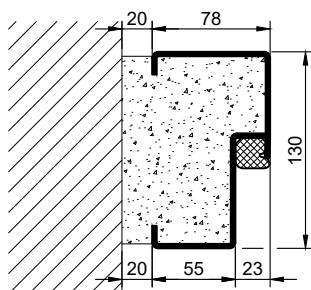
encasing frame



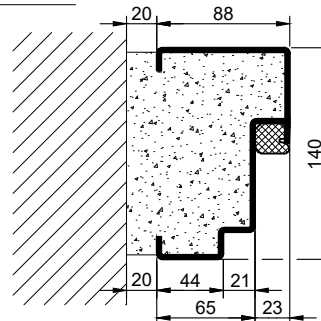
encasing frame with counter frame



block frame



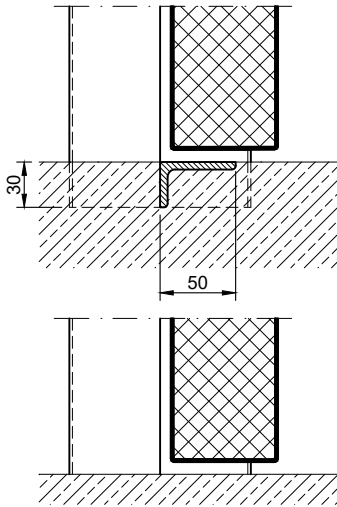
block frame



Thresholds

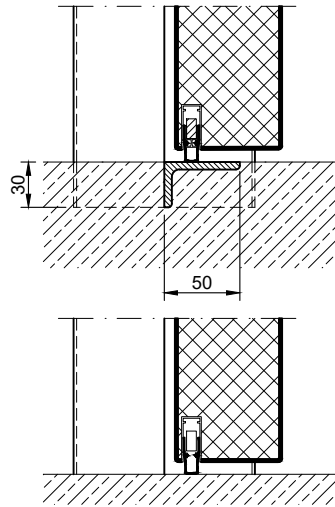
separation sill

notice:
Bei dieser Ausführung im Schwellenbereich **keine** Durchschusshemmung!

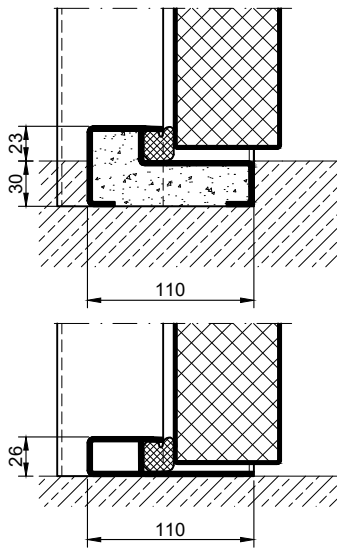


drop seal

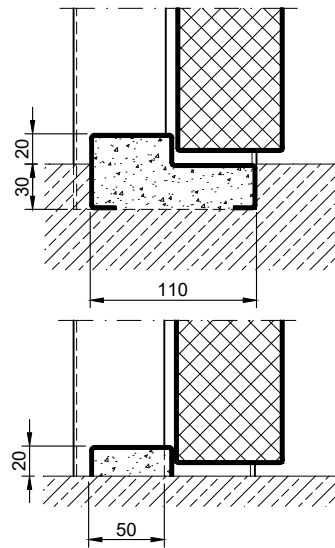
notice:
Bei dieser Ausführung im Schwellenbereich **keine** Durchschusshemmung!



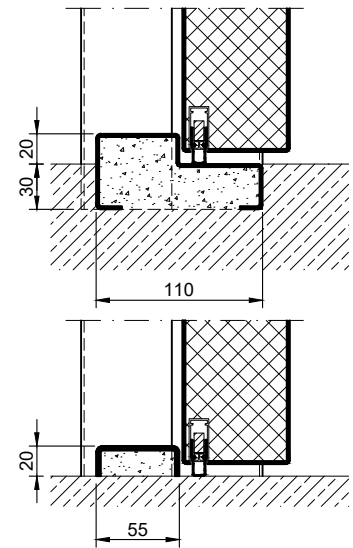
stop sill with seal



stop sill without seal



stop sill with drop seal



full sill

