

Double Leaf EI₂60 / T60 High Fire Retardant Vertically Pivoted Steel Door

| | | |
|---------------------------------|--|---------------------------------|
| Fire Protection | EI₂60 / T60 | tested acc. to EN 1634-1 |
| Smoke Control (optional) | S_a, S₂₀₀ / RS | tested acc. to EN 1634-3 |
| Self-Closing (optional) | up to C5 | tested acc. to EN 1191 |
| Air Tight | class 3 | tested acc. to EN 1026 |

Optional Audited Additional Functions

| | | |
|------------------------------|------------------------|--------------------------------------|
| - Sound Insulation | up to 42 dB | tested acc. to EN ISO 10140-2 |
| - Burglar Protection | RC2/RC3 | tested acc. to EN 1627 |
| - Bullet Resistance | FB4-NS | tested acc. to EN 1522 |
| - Rain- and Fire-Water Tight | class 1B | tested acc. to EN 1027 |
| - Wind load Resistance | class C5 | tested acc. to EN 12211 |
| - Blast Resistance | up to 2 kPa | tested acc. to EN 13124-1 |
| - Explosion Protection | up to zone 1/21 | acc. to EN 1127-1 or ATEX 2014/34/EU |
| - Stainless Steel | | |

Range of Dimension

Width from 1750 mm to 3000 mm
Height from 1750 mm to 3500 mm

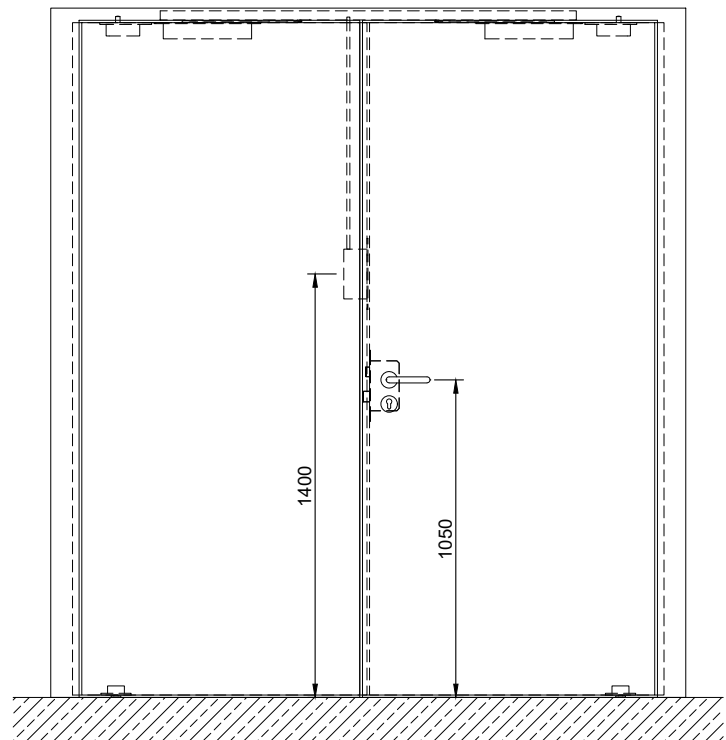
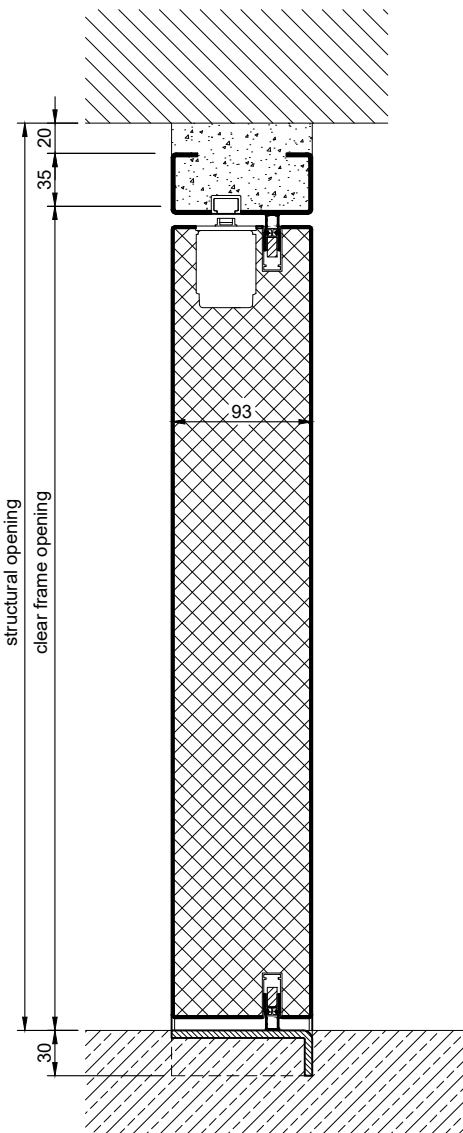
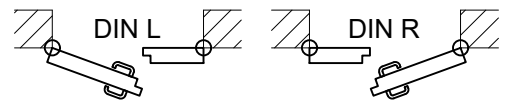
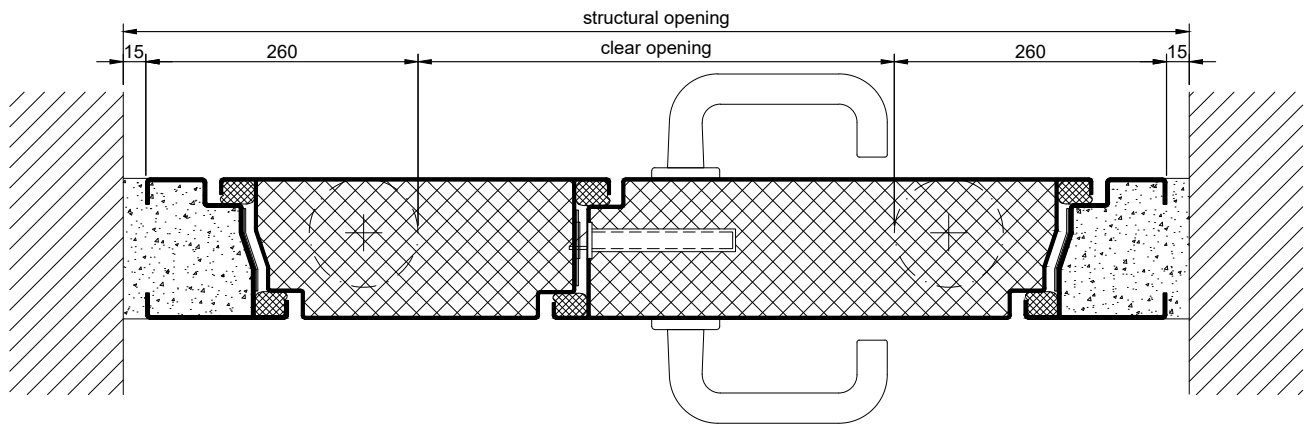
Technical Specification and Tender Text

| | |
|----------------------------|---|
| Product: | EI₂60 / T60 double leaf high fire retardant vertically pivoted steel door brand Buchele tested acc. to EN 1634-1 |
| Door Type: | ROTARY Line RL 602 |
| Air Tight: | class 3 |
| Structural Opening: | x mm |
| Door Leaf: | Double-walled, planar 93 mm thick steel door leaf, two sides rebated with thick rebate and adjustable fixed sealing profile in rebate. Without bottom stop. Special insulating inserts fully laid-in and glued. Drop seal system in bottom part of the door. Lifting seal system in top part of the door. |
| Threshold: | Floor bracket as separation sill. Surface stainless steel and welded to the frame. |
| Frame: | 3-sided circumferential rebated block frame with visible black coated intumescent material in rebate. High-quality multi chamber sealing profile adjustable fixed in the two-sided groove. |
| Hinges: | Concealed hinge system integrated in frame and floor, ball bearing mounted for smart door movement. The door leaf rotates around a vertical axis. |
| Door Closer: | Concealed slide rail door closer system acc. to EN 1154 integrated in frame and door leaf. |

| | |
|----------------------|---|
| Fitting: | Active leaf with mortise lock with latch lever function acc. to EN 12209 (prepared for installation of a profile cylinder lock, provided by customer). Door handle set in acc. to EN 1906 fixed pivoted synthetic material black in U-shape with rounded short-plate. Passive leaf with self-locking concealed shoot bolt lock with upper switch lock. |
| Surface: | Door leaf and frame galvanized und primed with 2K-PUR primer (Very High Solid) similar RAL 7035. |
| Installation: | masonry ≥ 115 mm concrete ≥ 100 mm areated concrete ≥ 200 mm mounting wall F60 ≥ 125 mm |

Supplementary Equipment

| | |
|-------------------------|--|
| Glazing: | F60 fire-protective glazing fixed with profiled and visible screwed steel glazing bars. Minimum border 125 mm on side and top, base 300 mm. |
| Stainless Steel: | Material 1.4301 (V2A) or 1.4404 (V4A), Surface mill finish or brushed. |
| BUCHELE DELUXE: | The exclusive surface coating. |



1.34.5 ROTARY LINE RL 602 LD3_EN

technical modifications reserved - edition 05/2024