

Double Leaf EI₂60 / T60 High Fire Retardant Vertically Pivoted Steel Door

Fire Protection	EI₂60 / T60	tested acc. to EN 1634-1
Smoke Control (optional)	S_a, S₂₀₀ / RS	tested acc. to EN 1634-3
Self-Closing (optional)	up to C5	tested acc. to EN 1191
Burglar Protection	RC3	tested acc. to EN 1627

Optional Audited Additional Functions

- Sound Insulation	up to 42 dB	tested acc. to EN ISO 10140-2
- Bullet Resistance	FB4-NS	tested acc. to EN 1522
- Air Tight	up to class 3	tested acc. to EN 1026
- Wind load Resistance	class C5	tested acc. to EN 1221
- Blast Resistance	up to 2 kPa	tested acc. to EN 13124-1
- Explosion Protection	up to zone 1/21	acc. to EN 1127-1 or ATEX 2014/34/EU
- Stainless Steel		

Range of Dimension

Width from 1750 mm to 3000 mm
Height from 1750 mm to 3500 mm

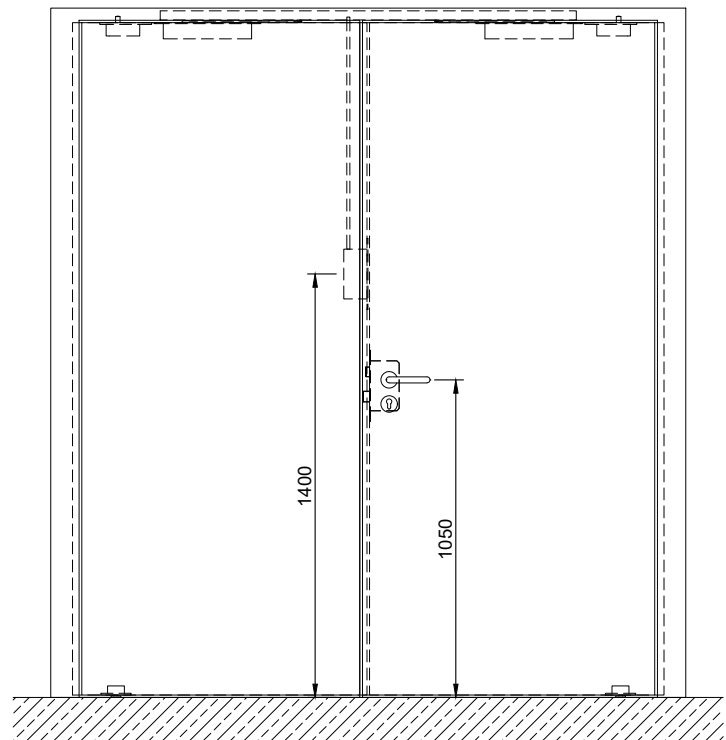
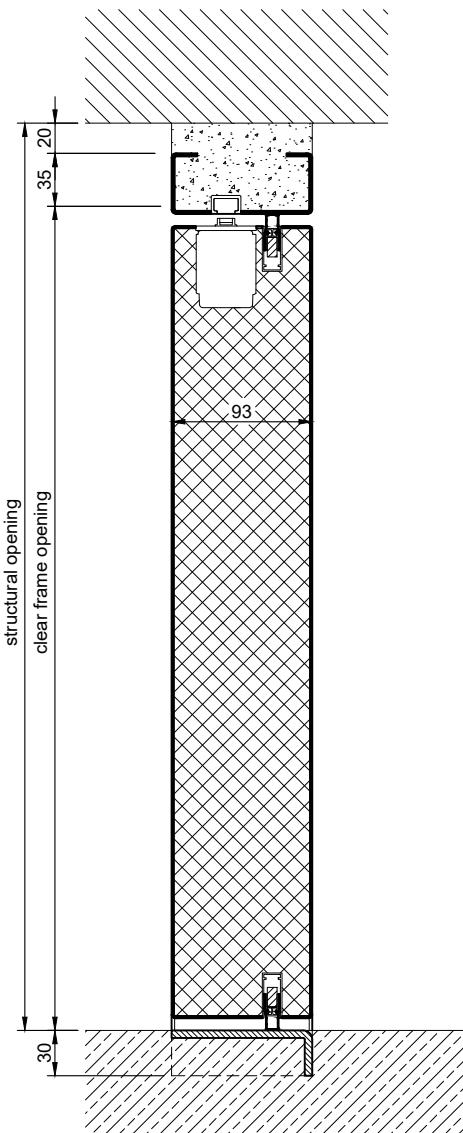
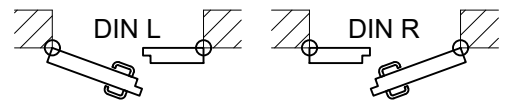
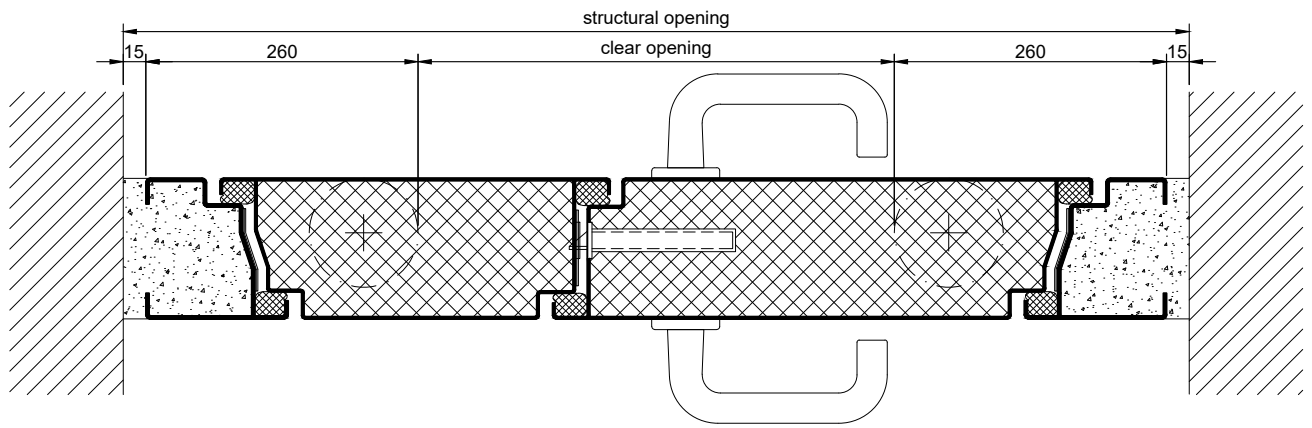
Technical Specification and Tender Text

Product:	EI₂60 / T60 double leaf high fire retardant vertically pivoted steel door brand Buchele tested acc. to EN 1634-1 and EN 1627
Door Type:	ROTARY Line RL 602
Resistance Class:	RC 3
Structural Opening: x mm
Door Leaf:	Double-walled, planar 93 mm thick steel door leaf, two sides rebated with thick rebate and adjustable fixed sealing profile in rebate. Without bottom stop. Special insulating inserts fully laid-in and glued. Passive leaf with multi-chamber sealing profile in the middle rebate. Drop seal system in bottom part of the door. Lifting seal system in top part of the door.
Threshold:	Floor bracket as separation sill. Surface stainless steel and welded to the frame.
Frame:	3-sided circumferential rebated block frame with visible black coated intumescent material in rebate. High-quality multi chamber sealing profile adjustable fixed in the two-sided groove.
Hinges:	Concealed hinge system integrated in frame and floor, ball bearing mounted for smart door movement. The door leaf rotates around a vertical axis.
Door Closer:	Concealed slide rail door closer system acc. to EN 1154 integrated in frame and door leaf.

Fitting:	Active leaf with mortise lock with latch lever function acc. to EN 12209 (prepared for installation of a profile cylinder lock, provided by customer). Door handle set in acc. to EN 1906 fixed pivoted synthetic material black in U-shape with rounded short-plate. Passive leaf with self-locking concealed shoot bolt lock with upper switch lock.
Surface:	Door leaf and frame galvanized und primed with 2K-PUR primer (Very High Solid) similar RAL 7035.
Installation:	masonry ≥ 115 mm concrete ≥ 100 mm areated concrete ≥ 200 mm mounting wall F60 ≥ 125 mm

Supplementary Equipment

Standard Glazing:	F60 fire-protective glazing fixed with profiled and visible screwed steel glazing bars. Minimum border 125 mm on side and top, base 300 mm.
Flush Glazing:	F60 special glazing flush mounted with outer edge of door leaf on hinge side and opposite hinge side. Edge enamelling and permanent elastic glazing joint in colour black RAL 9004. Minimum border 125 mm on side and top, base 300 mm.
Stainless Steel:	Material 1.4301 (V2A) or 1.4404 (V4A), Surface mill finish or brushed.
BUCHELE DELUXE:	The exclusive surface coating.



1.32.5 ROTARY LINE RL 602 RC3_EN

technical modifications reserved - edition 05/2024