

### Single Leaf EI<sub>260</sub> / T60 High Fire-Retardant Explosion Resistant Door

|                                 |  |                                  |
|---------------------------------|--|----------------------------------|
| <b>Fire Protection</b>          | <b>EI<sub>260</sub> / T60</b>              | <b>tested acc. to EN 1634-1</b>  |
| <b>Smoke Control (optional)</b> | <b>S<sub>a</sub>, S<sub>200</sub> / RS</b> | <b>tested acc. to EN 1634-3</b>  |
| <b>Self-Closing (optional)</b>  | <b>up to C5</b>                            | <b>tested acc. to EN 1191</b>    |
| <b>Blast Resistance</b>         | <b>5 kPa</b>                               | <b>tested acc. to EN 13124-1</b> |

**Certified in accordance with DIN EN 16034 / 14351-1 / 13241**  
**General Building Approval as T60-1 (-RS) -FSA acc. to DIN 4102-5 / DIN 18095**

### Optional Audited Additional Functions

|                              |                        |                                      |
|------------------------------|------------------------|--------------------------------------|
| - Sound Insulation           | <b>up to 54 dB</b>     | tested acc. to EN ISO 10140-2        |
| - Burglar Protection         | <b>RC2/RC3/RC4/RC5</b> | tested acc. to EN 1627               |
| - Bullet Resistance          | <b>FB4/FB6-NS</b>      | tested acc. to EN 1522               |
| - Air Tight                  | <b>up to class 4</b>   | tested acc. to EN 1026               |
| - Rain- and Fire-Water Tight | <b>class 6A</b>        | tested acc. to EN 1027               |
| - Wind load Resistance       | <b>up to class C5</b>  | tested acc. to EN 1221               |
| - Explosion Protection       | <b>up to zone 1/21</b> | acc. to EN 1127-1 or ATEX 2014/34/EU |
| - Stainless Steel            |                        |                                      |

### Range of Dimension

**Range of Dimension for Doors**      **Width** from 625 mm to 1500 mm  
**Height** from 1750 mm to 3000 mm

**Range of Dimension for Hatches**      **Width** from 500 mm to 750 mm  
**Height** from 500 mm to 1750 mm

### Technical Specification and Tender Text

|                            |   |
|----------------------------|---|
| <b>Product:</b>            | <b>EI<sub>260</sub> / T60 single leaf fire retardant explosion resistant door brand Buchele tested acc. to EN 1634-1 and EN 13124-1</b>   |
| <b>Door Type:</b>          | <b>PLANE Line PL 601 BASIC</b>  |
| <b>Blast Resistance:</b>   | <b>5 kPa</b>  |
| <b>Structural Opening:</b> | <b>.... x .... mm</b>   |
| <b>Door Leaf:</b>          | Double-walled, planar 70 mm thick steel door leaf without hinge embossing, three sides rebated with thick rebate.<br>Without bottom stop.<br>Special insulating inserts fully laid-in and glued.<br>Securing pin screwed in door leaf rebate. |
| <b>Threshold:</b>          | Floor bracket as separation sill. Surface galvanized and welded to the frame.   |
| <b>Frame:</b>              | 3-sided circumferential rebated corner frame with visible black coated intumescent material in rebate.<br>High-quality multi chamber sealing profile adjustable fixed in the three-sided groove.  |
| <b>Hinges:</b>             | Three-part, height adjustable construction hinges with hinge pin retention and ball bearing spacer ring for smooth door movement.   |

|                      |   |          |
|----------------------|---|----------|
| <b>Door Closer:</b>  | Door closer system with standard arm acc. to EN 1154 silver coloured mounted on hinge side.   |          |
| <b>Fitting:</b>      | Mortise lock with latch lever function acc. to EN 12209 (prepared for installation of a profile cylinder lock, provided by customer).<br>Door handle set in acc. to EN 1906 fixed pivoted synthetic material black in U-shape with rounded short-plate. |          |
| <b>Surface:</b>      | Door leaf and frame galvanized und primed with 2K-PUR primer (Very High Solid) similar RAL 7035.  |          |
| <b>Installation:</b> | masonry   | ≥ 115 mm |
|                      | concrete  | ≥ 100 mm |
|                      | areated concrete  | ≥ 200 mm |
|                      | mounting wall F60   | ≥ 125 mm |

### Alternative: PLANE Line PL 601 PREMIUM with flush mounted optics

|                     |   |  |
|---------------------|---|--|
| <b>Frame:</b>       | 3-sided circumferential rebated PLANE Line special corner frame for flush mounted optics on hinge side.<br>With visible, black coated intumescent material in rebate.<br>High-quality multi-chamber sealing profile adjustable fixed in the three-sided groove. |  |
| <b>Hinges:</b>      | Object hinges type VB-3D 160 adjustable in three dimensions.<br>Fixture element with slide bearings inside for smooth door movement.  |  |
| <b>Door Closer:</b> | Slide rail door closer system acc. to EN 1154 silver coloured mounted on hinge side.  |  |

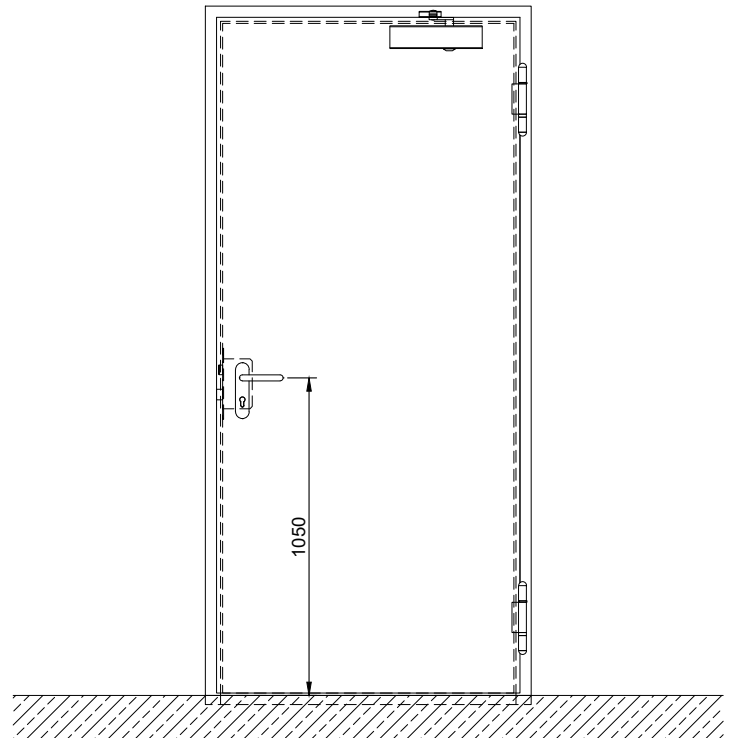
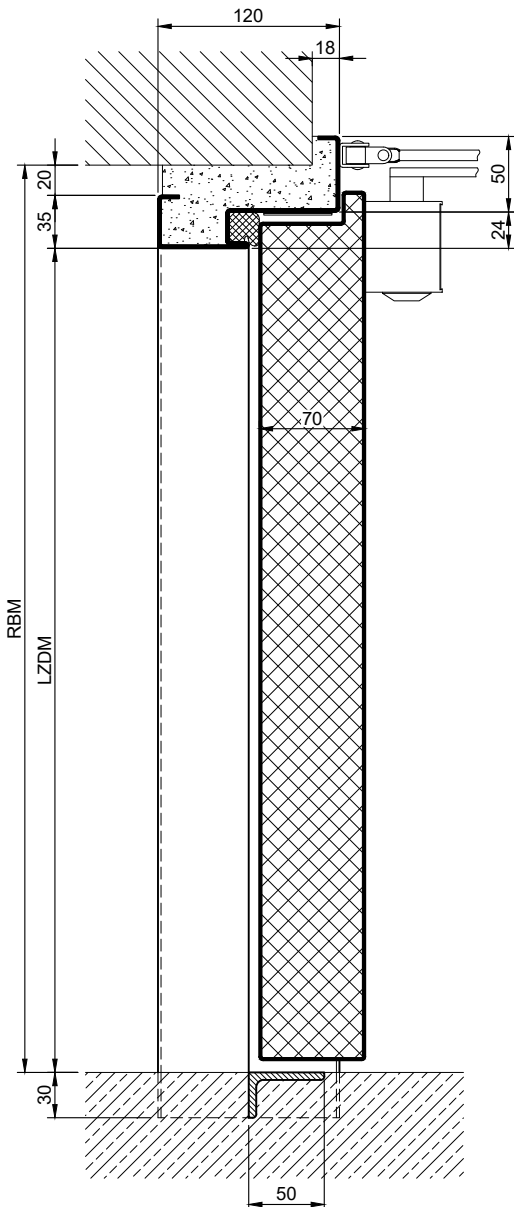
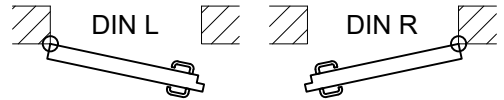
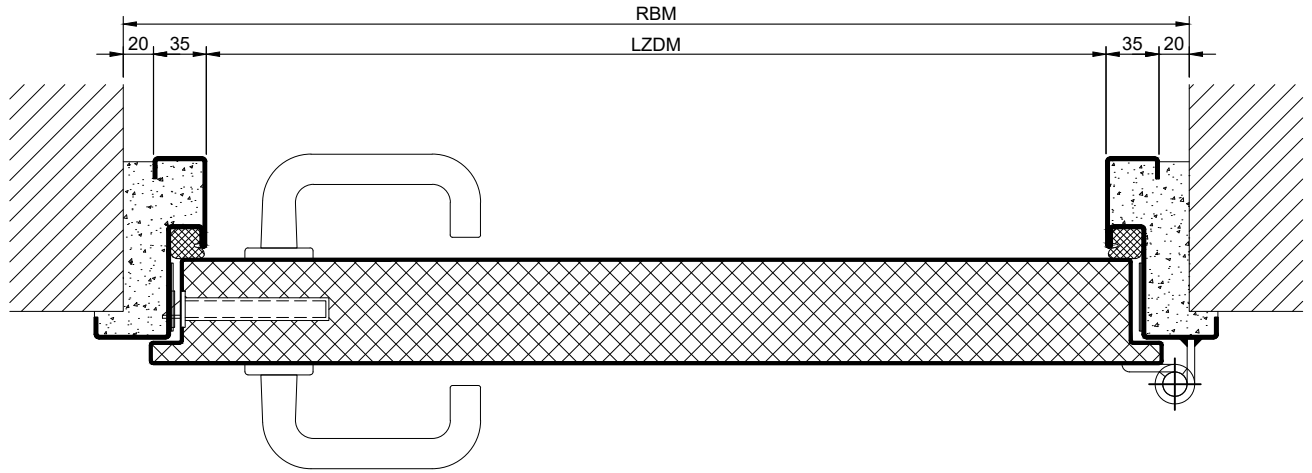
### Alternative: PLANE Line PL 601 SUPERIOR with flush mounted optics

|                     |   |  |
|---------------------|---|--|
| <b>Frame:</b>       | 3-sided circumferential rebated PLANE Line special corner frame for flush mounted optics on hinge side.<br>With visible, black coated intumescent material in rebate.<br>High-quality multi-chamber sealing profile adjustable fixed in the three-sided groove. |  |
| <b>Hinges:</b>      | Concealed hinge system adjustable in three dimensions.  |  |
| <b>Door Closer:</b> | Concealed slide rail door closer system acc. to EN 1154 integrated in frame and door leaf.  |  |

### Supplementary Equipment

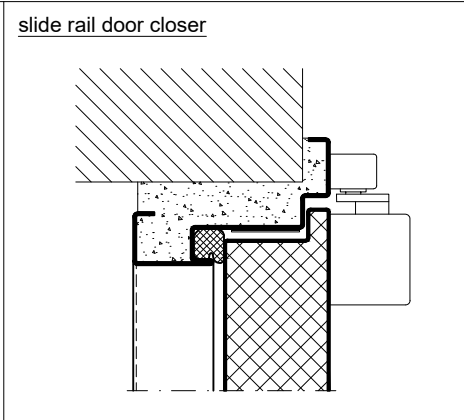
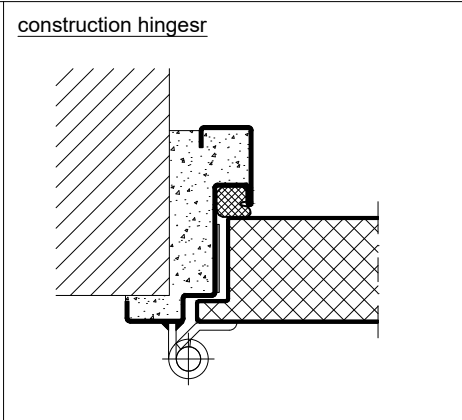
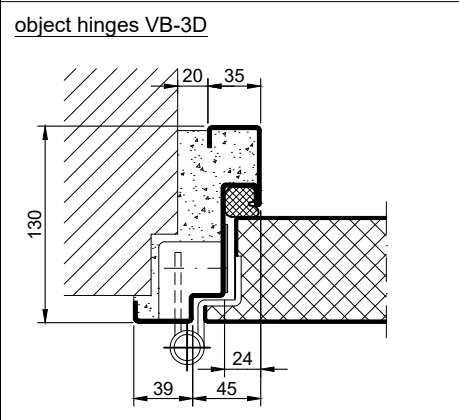
|                         |  |  |
|-------------------------|--|--|
| <b>Glazing:</b>         | F60 fire-protective glazing fixed with profiled and visible screwed steel glazing bars.<br>Minimum border 125 mm on side and top, base 300 mm. |  |
| <b>Stainless Steel:</b> | Material 1.4301 (V2A) or 1.4404 (V4A),<br>Surface mill finish or brushed.  |  |
| <b>BUCHELE DELUXE:</b>  | The exclusive surface coating.   |  |

### BASIC - Version

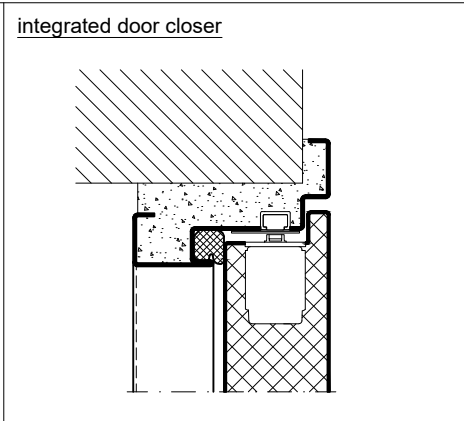
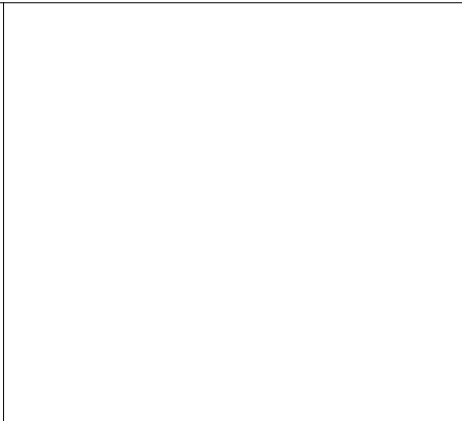
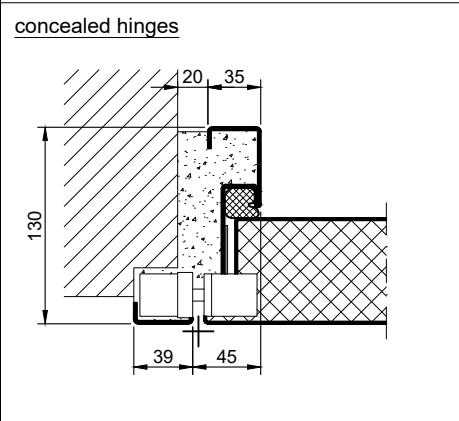


1.25.3 PLANE LINE PL 601 - 5 KPA\_EN

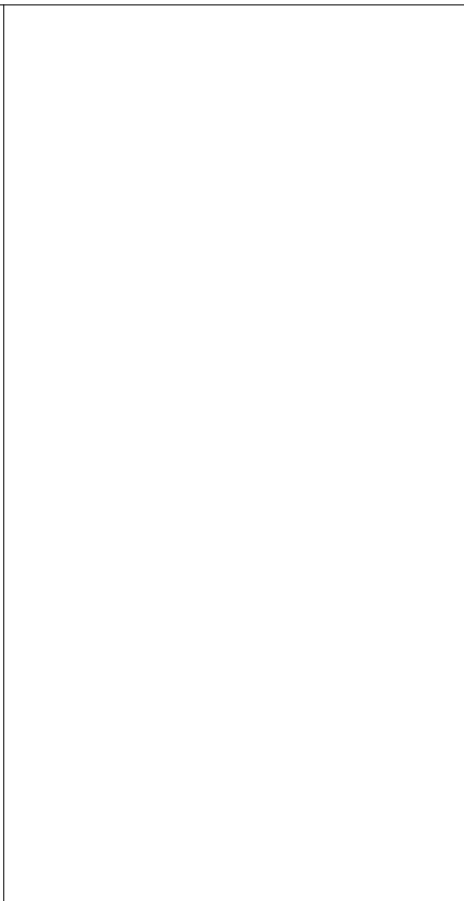
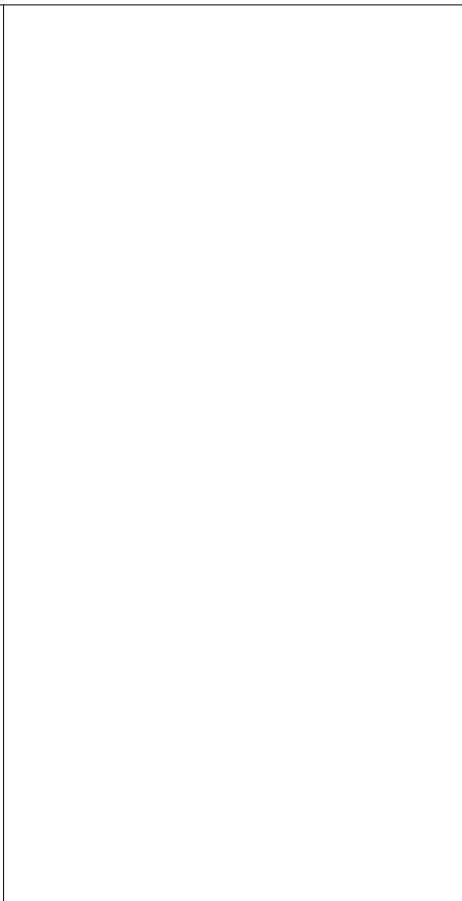
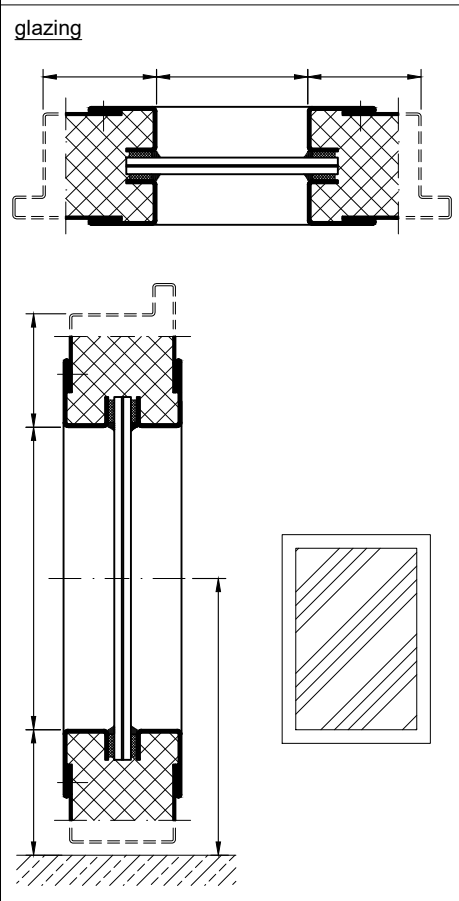
### PREMIUM - Version



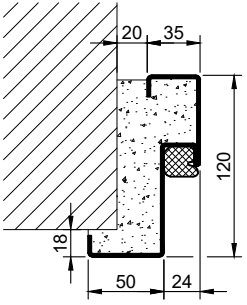
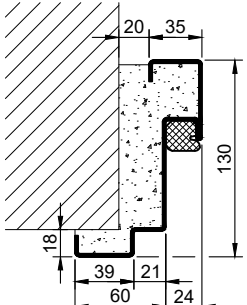
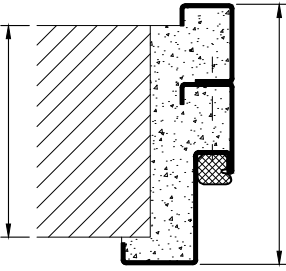
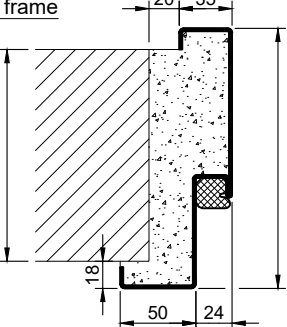
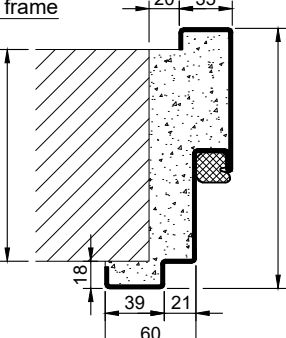
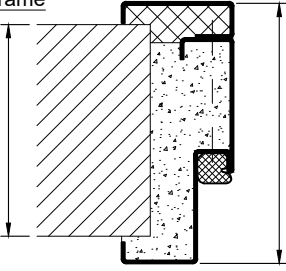
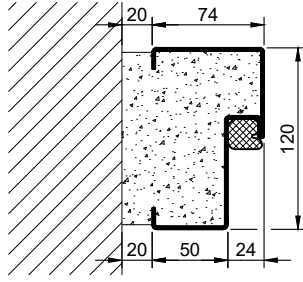
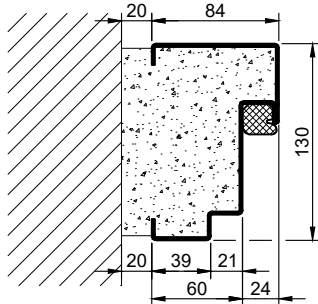
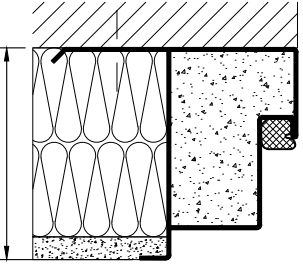
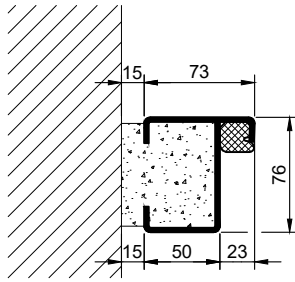
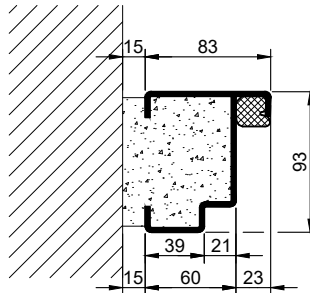
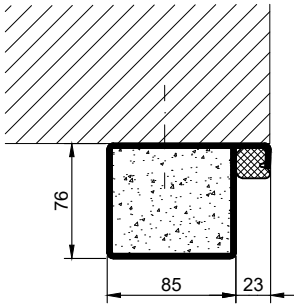
### SUPERIOR - Version



### Options



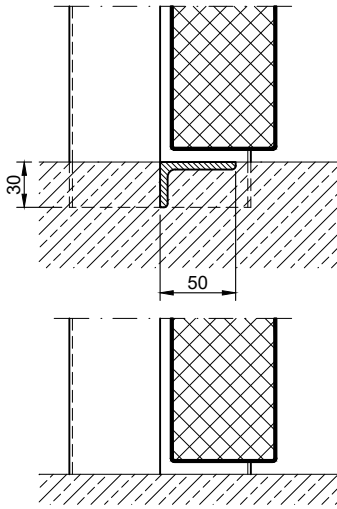
1.25.3 PLANE LINE PL 601 - 5KPA\_EN

| Frames BASIC   | Frames PREMIUM/SUPERIOR  | Variants (illustration BASIC)   |
|--|--|---|
| <p>corner frame</p>           | <p>corner frame</p>           | <p>corner frame with additional frame</p>  |
| <p>encasing frame</p>         | <p>encasing frame</p>         | <p>encasing frame with counter frame</p>   |
| <p>block frame</p>          | <p>block frame</p>          | <p>jutted block frame</p>                |
| <p>profile block frame</p>  | <p>profile block frame</p>  | <p>pre-wall frame</p>                    |

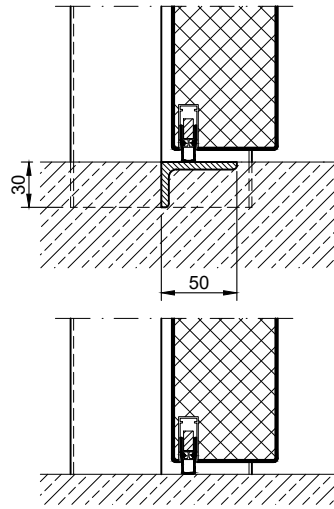
1.25.3 PLANE LINE PL 601 - 5KPA\_EN

### Thresholds

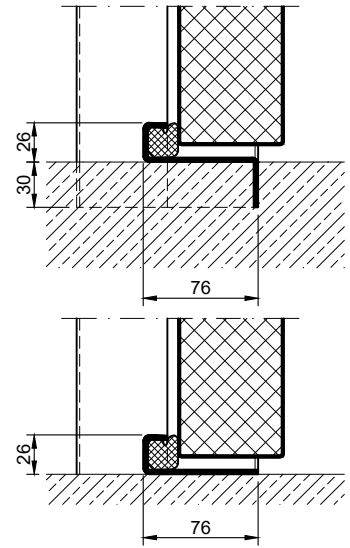
separation sill



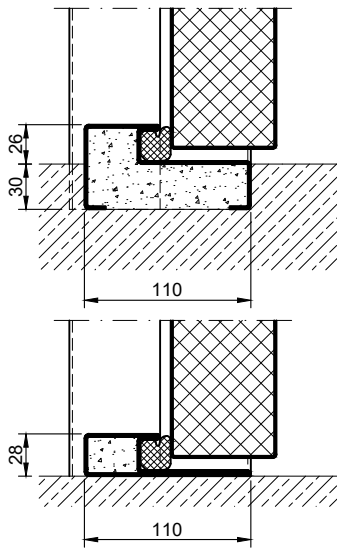
drop seal



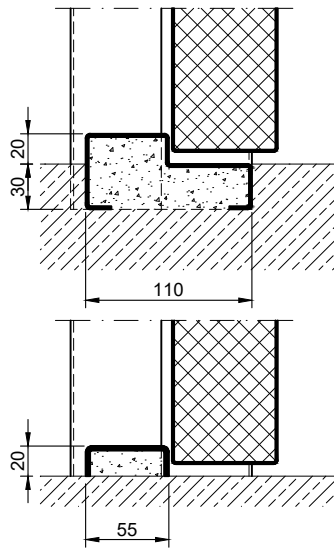
stop sill with seal



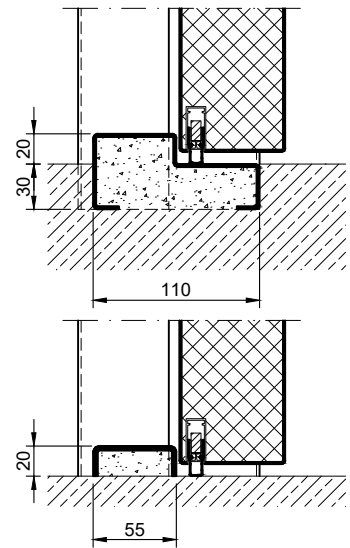
stop sill with seal



stop sill without seal



stop sill with drop seal



full sill

