

Double Leaf EI₂₃₀ / T30 Fire Retardant Vertically Pivoted Steel Door

Fire Protection	EI₂₃₀ / T30	tested acc. to EN 1634-1
Smoke Control (optional)	S_a, S₂₀₀ / RS	tested acc. to EN 1634-3
Self-Closing (optional)	up to C5	tested acc. to EN 1191
Bullet Resistance	FB 4 NS	tested acc. to EN 1522

Optional Audited Additional Functions

- Sound Insulation	up to 42 dB	tested acc. to EN ISO 10140-2
- Burglar Protection	RC2/RC3	tested acc. to EN 1627
- Air Tight	up to class 3	tested acc. to EN 1026
- Wind load Resistance	class C5	tested acc. to EN 1221
- Blast Resistance	up to 2 kPa	tested acc. to EN 13124-1
- Explosion Protection	up to zone 1/21	acc. to EN 1127-1 or ATEX 2014/34/EU
- Stainless Steel		

Range of Dimension

Width from 1750 mm to 3000 mm
Height from 1750 mm to 3500 mm

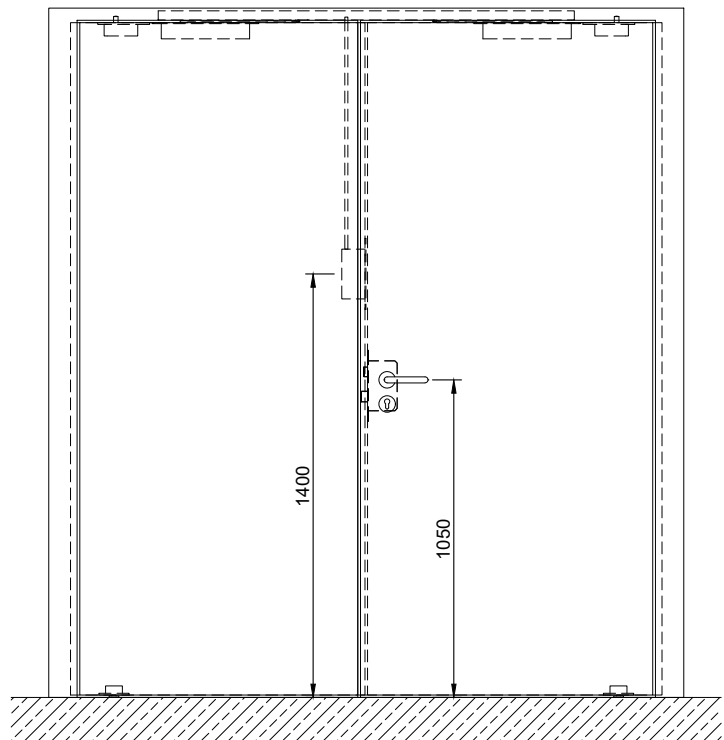
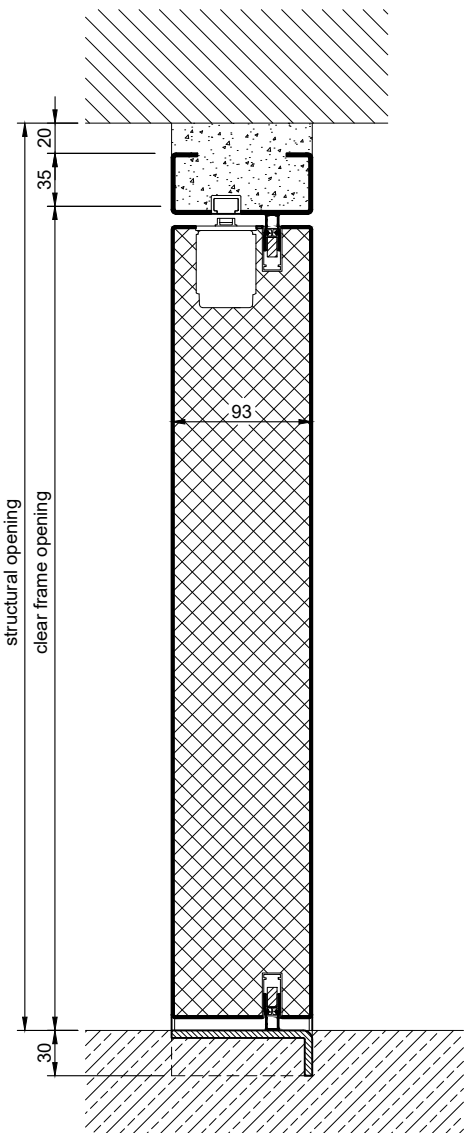
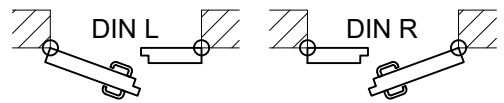
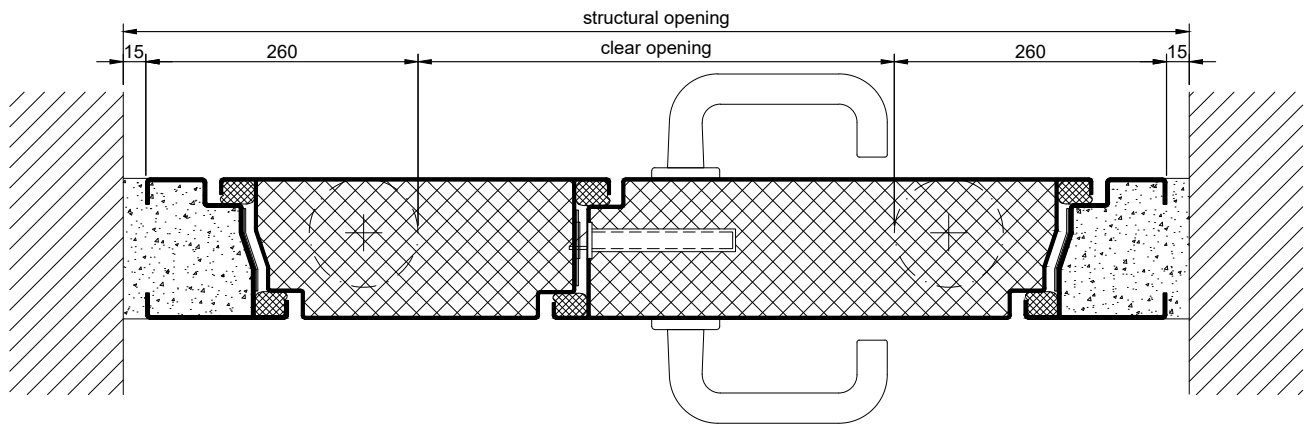
Technical Specification and Tender Text

Product:	EI₂₃₀ / T30 double leaf fire retardant vertically pivoted steel door brand Buchele tested acc. to EN 1634-1 and EN 1522
Door Type:	ROTARY Line RL 302
Structural Opening: x mm
Bullet Resistance:	FB 4 NS
Door Leaf:	Double-walled, planar 93 mm thick steel door leaf, two sides rebated with thick rebate and adjustable fixed sealing profile in rebate. Without bottom stop. Special insulating inserts fully laid-in and glued. Passive leaf with multi-chamber sealing profile in the middle rebate. Drop seal system in bottom part of the door. Lifting seal system in top part of the door.
Threshold:	Floor bracket as separation sill. Surface stainless steel and welded to the frame.
Frame:	3-sided circumferential rebated block frame with visible black coated intumescent material in rebate. High-quality multi chamber sealing profile adjustable fixed in the two-sided groove.
Hinges:	Concealed hinge system integrated in frame and floor, ball bearing mounted for smart door movement. The door leaf rotates around a vertical axis.
Door Closer:	Concealed slide rail door closer system acc. to EN 1154 integrated in frame and door leaf.

Fitting:	Active leaf with mortise lock with latch lever function acc. to EN 12209 (prepared for installation of a profile cylinder lock, provided by customer). Door handle set in acc. to EN 1906 fixed pivoted synthetic material black in U-shape with rounded short-plate. Passive leaf with self-locking concealed shoot bolt lock with upper switch lock.
Surface:	Door leaf and frame galvanized und primed with 2K-PUR primer (Very High Solid) similar RAL 7035.
Installation:	masonry ≥ 115 mm concrete ≥ 100 mm areated concrete ≥ 200 mm mounting wall F60 ≥ 125 mm

Supplementary Equipment

Standard Glazing:	F30 fire-protective glazing fixed with profiled and visible screwed steel glazing bars. Minimum border 125 mm on side and top, base 300 mm.
Flush Glazing:	PLANE Line F30 special glazing flush mounted with outer edge of door leaf on hinge side and opposite hinge side. Edge enamelling and permanent elastic glazing joint in colour black RAL 9004. Minimum border 125 mm on side and top, base 300 mm.
Stainless Steel:	Material 1.4301 (V2A) or 1.4404 (V4A), Surface mill finish or brushed.
BUCHELE DELUXE:	The exclusive surface coating.



1.13.3_ROTARY LINE RL 302 FB4_EN

technical modifications reserved - edition 03/2024